

W. ANAHEIM ST.

HAYES AVE.

SEABRIGHT AVE.

W. COWLES ST.

RARE PORT OF LONG BEACH ADJACENT YARD OPPORTUNITY

1404 HAYES & 1403 SEABRIGHT

LONG BEACH | CA

FOR LEASE $\pm 53,325$ SF OF LAND



1.22 AC
LOT SIZE



ZONING
IG, LONG BEACH



710 FWY
PROXIMITY



CONCRETE
& FENCED
YARD

FOR MORE INFORMATION PLEASE CONTACT:

ANTHONY BERGEMAN 
949.341.4511
abergeman@daumcommercial.com
CA License #01841828

KRISHNA SHEGRAN
949.341.4512
kshegran@daumcommercial.com
CA License #02038911

CHARLES JOHNSON II 
562.576.1424
cajohnson@daumcommercial.com
CA License #01817294

JOSEPH HARMON 
562.695.7244
jharmon@daumcre.com
CA License #02049608



FOR LEASE

±53,325 SF OF LAND

PROPERTY FEATURES

- Rare Port of Long Beach Adjacent Location
- Fully Refurbished w/ Brand New +/-640SF
Office building estimated to be completed by Q3 2025
- Concrete Paved
- Fully Fenced and LED Lighted Yard
- Excellent Access to PCH, 710, 103, 405, and 110 Freeways

FOR MORE INFORMATION PLEASE CONTACT:

ANTHONY BERGEMAN 
949.341.4511
abergeman@daumcommercial.com
CA License #01841828

KRISHNA SHEGRAN
949.341.4512
kshegran@daumcommercial.com
CA License #02038911

CHARLES JOHNSON II 
562.576.1424
cajohnson@daumcommercial.com
CA License #01817294

JOSEPH HARMON 
562.695.7244
jharmon@daumcre.com
CA License #02049608

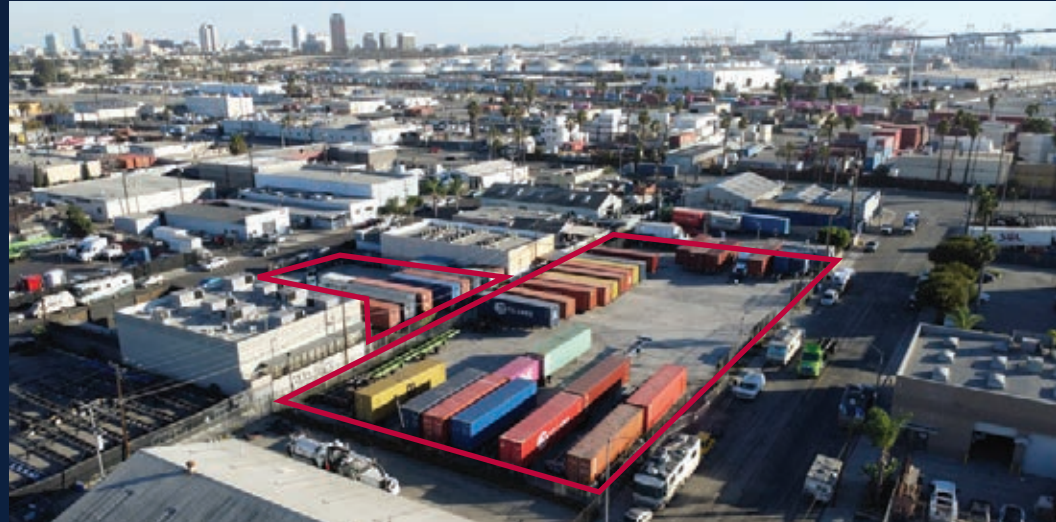
D/AQ Corp. #01129558. Maps Courtesy ©Google & ©Microsoft. Although all information is furnished regarding for sale, rental or financing is from sources deemed reliable, such information has not been verified and no express representation is made nor is any to be implied as to the accuracy thereof, and it is submitted subject to errors, omissions, changes of price, rental or other conditions, prior sale, lease or financing, or withdrawal without notice.

 **DAUM**
INVESTMENT DIVISION

FOR LEASE ±53,325 SF OF LAND

1404 HAYES & 1403 SEABRIGHT | LONG BEACH | CA

PROPERTY PHOTOS




FOR MORE INFORMATION PLEASE CONTACT:

ANTHONY BERGEMAN 
949.341.4511
abergeman@daumcommercial.com
CA License #01841828

KRISHNA SHEGRAN
949.341.4512
kshegran@daumcommercial.com
CA License #02038911

CHARLES JOHNSON II 
562.576.1424
cajohnson@daumcommercial.com
CA License #01817294

JOSEPH HARMON 
562.695.7244
jharmon@daumcre.com
CA License #02049608

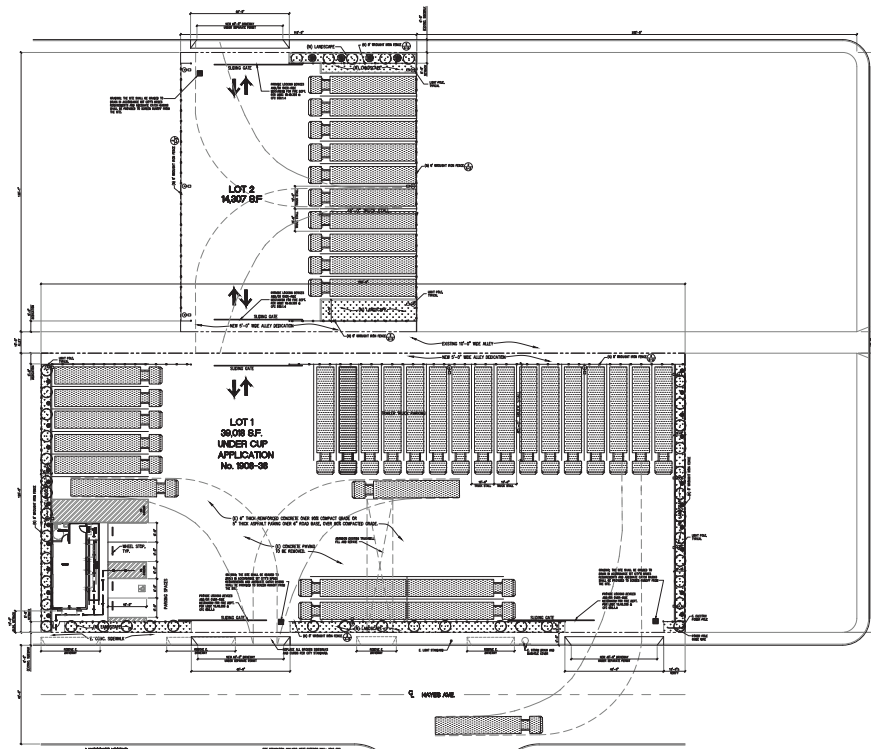
D/AQ Corp. #01129558. Maps Courtesy ©Google & ©Microsoft. Although all information is furnished regarding for sale, rental or financing is from sources deemed reliable, such information has not been verified and no express representation is made nor is any to be implied as to the accuracy thereof, and it is submitted subject to errors, omissions, changes of price, rental or other conditions, prior sale, lease or financing, or withdrawal without notice.

DAUM
INVESTMENT DIVISION

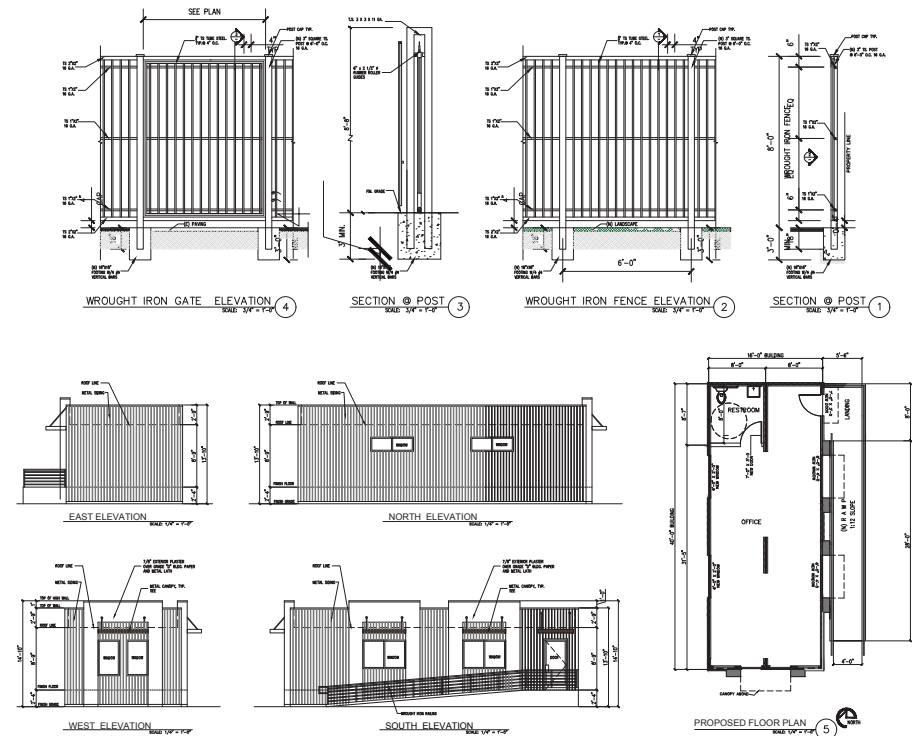
FOR LEASE ±53,325 SF OF LAND

1404 HAYES & 1403 SEABRIGHT | LONG BEACH | CA

SITE PLAN



FLOOR PLAN & ELEVATIONS



FOR MORE INFORMATION PLEASE CONTACT:

ANTHONY BERGEMAN SIOB
949.341.4511
abergeman@daumcommercial.com
CA License #01841828

KRISHNA SHEGRAN
949.341.4512
kshegran@daumcommercial.com
CA License #02038911

CHARLES JOHNSON II SIOB
562.576.1424
cajohnson@daumcommercial.com
CA License #01817294

JOSEPH HARMON SIOB
562.695.7244
jharmon@daumcre.com
CA License #02049608

D/AQ Corp., #01129558. Maps Courtesy ©Google & ©Microsoft. Although all information is furnished regarding for sale, rental or financing is from sources deemed reliable, such information has not been verified and no express representation is made nor is any to be implied as to the accuracy thereof, and it is submitted subject to errors, omissions, changes of price, rental or other conditions, prior sale, lease or financing, or withdrawal without notice.

DAUM
INVESTMENT DIVISION



FOR LEASE ±53,325 SF OF LAND

1404 HAYES & 1403 SEABRIGHT | LONG BEACH | CA

FOR MORE INFORMATION PLEASE CONTACT:

ANTHONY BERGEMAN 
949.341.4511
abergeman@daumcommercial.com
CA License #01841828

KRISHNA SHEGRAN
949.341.4512
kshegran@daumcommercial.com
CA License #02038911

CHARLES JOHNSON II 
562.576.1424
cajohnson@daumcommercial.com
CA License #01817294

JOSEPH HARMON 
562.695.7244
jharmon@daumcre.com
CA License #02049608

D/AQ Corp. #01129558. Maps Courtesy ©Google & ©Microsoft. Although all information is furnished regarding for sale, rental or financing is from sources deemed reliable, such information has not been verified and no express representation is made nor is any to be implied as to the accuracy thereof, and it is submitted subject to errors, omissions, changes of price, rental or other conditions, prior sale, lease or financing, or withdrawal without notice.



FOR LEASE ±53,325 SF OF LAND

1404 HAYES & 1403 SEABRIGHT | LONG BEACH | CA



FOR MORE INFORMATION PLEASE CONTACT:

ANTHONY BERGEMAN 
949.341.4511
abergeman@daumcommercial.com
CA License #01841828

KRISHNA SHEGRAN
949.341.4512
kshegran@daumcommercial.com
CA License #02038911

CHARLES JOHNSON II 
562.576.1424
cajohnson@daumcommercial.com
CA License #01817294

JOSEPH HARMON 
562.695.7244
jharmon@daumcre.com
CA License #02049608

D/AQ Corp. #01129558. Maps Courtesy ©Google & ©Microsoft. Although all information is furnished regarding for sale, rental or financing is from sources deemed reliable, such information has not been verified and no express representation is made nor is any to be implied as to the accuracy thereof, and it is submitted subject to errors, omissions, changes of price, rental or other conditions, prior sale, lease or financing, or withdrawal without notice.


INVESTMENT DIVISION