

FOR LEASE

3631 N Morrison Rd. Muncie, IN



PROPERTY HIGHLIGHTS

- 3,544 RSF of Medical Office Space Available For Lease
- Located near IU Health Ball Memorial Hospital and Ball State University
- Covered patient drop-off
- Ample parking



3631 N Morrison Rd.
Muncie, IN 47304



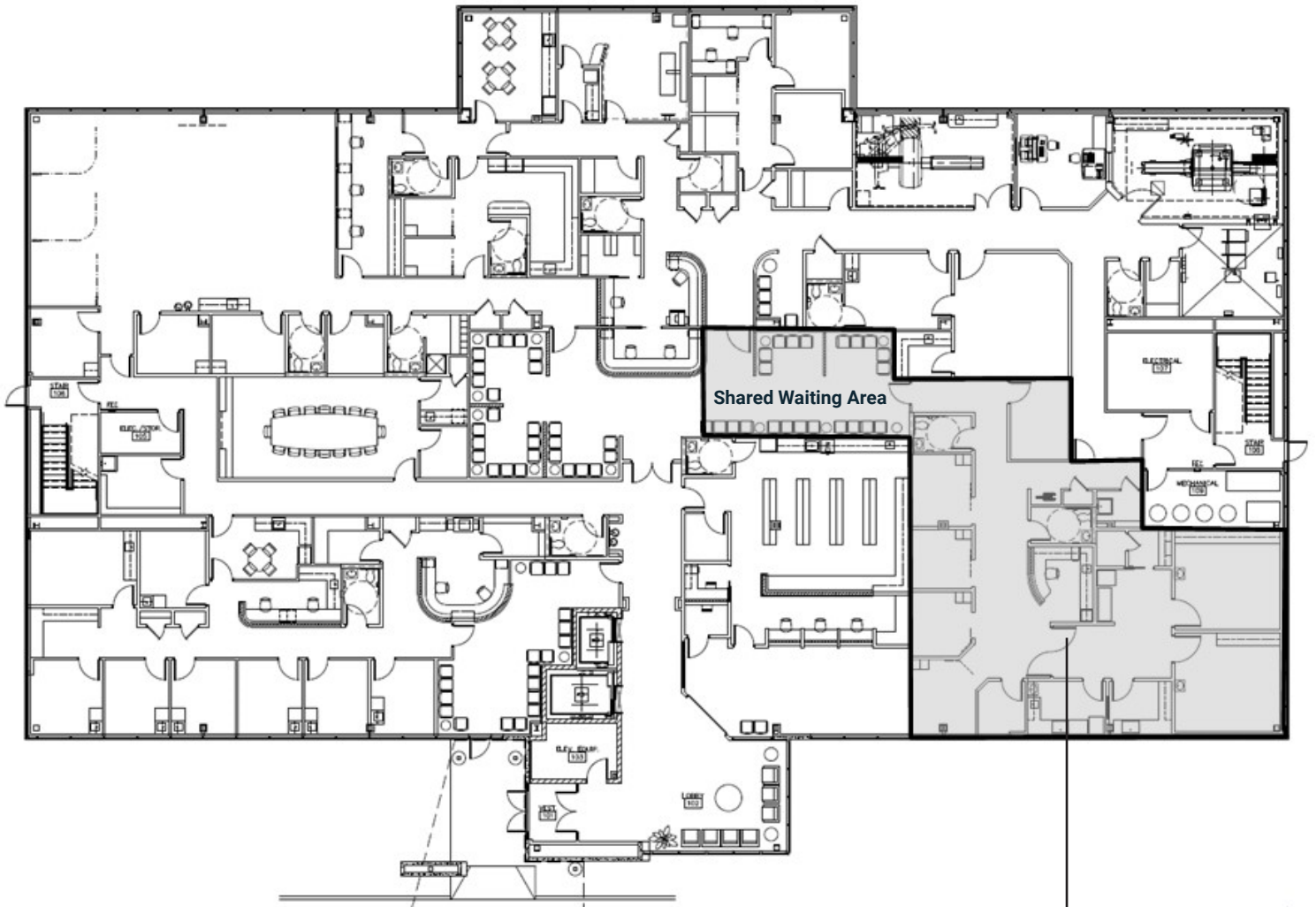
CONTACT

Ross Goyer
Executive Vice President
317-288-9011
rgoyer@cciin.com

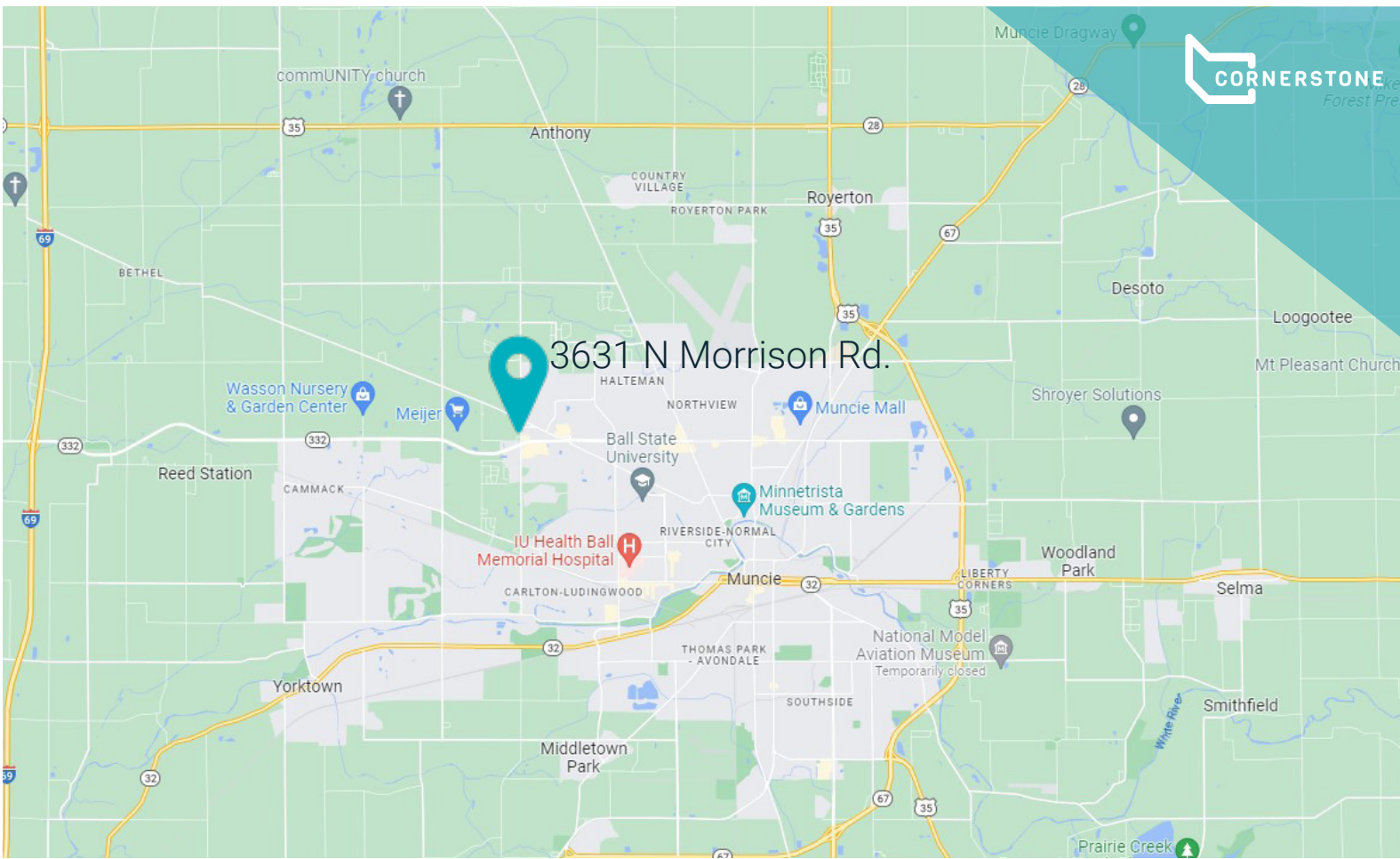
Cornerstone Companies, Inc.
8902 N Meridian Street, Suite 205
Indianapolis, IN 46260

FLOOR PLAN


1st Floor



Suite 106:
3,544 RSF




DEMOGRAPHICS

 73,984
Population

 33
Median Age

 29,597
Households

 27,184
Per Capita
Income

 45,324
Median
Household
Income



CONTACT

Ross Goyer
Executive Vice President
317-288-9011
rgoyer@cciin.com