

FOR LEASE

SOUTHTOWN CENTRE



## PROPERTY DETAILS

955 East Chambers Street, South Ogden, Utah 84403

*Lease Rate: \$24.00/SF Full Service*

- Suite 201: 2,346 SF available on 10/1/2026
- Suite 203: 4,000 SF
- Suites can be combined for a total of 6,346 SF
- High visibility on Highway 89
- 137 parking stalls, 4:1,000 ratio
- Great professional/medical location
- Weekly in-suite janitorial included

### NEARBY RETAIL AMENITIES



# NEWMARK

MOUNTAIN WEST

**CHRIS FALK, CCIM, SIOR**  
cfalk@newmarkmw.com  
direct 801.499.6514  
[View Profile](#)

**BRAXTON WILLIE, CCIM**  
bwillie@newmarkmw.com  
direct 801.803.3334  
[View Profile](#)

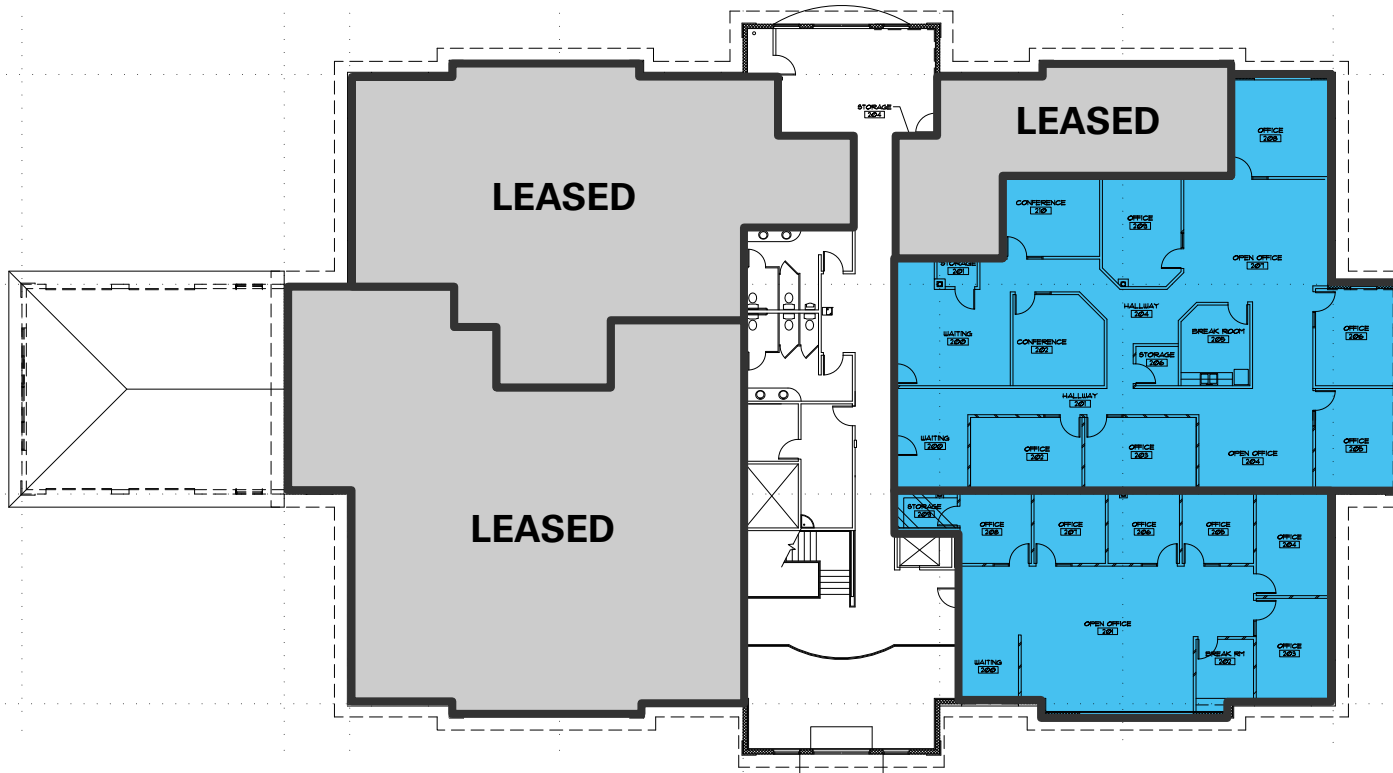
**BRANSON WOOD**  
bwood@newmarkmw.com  
direct 801.510.5207  
[View Profile](#)

**FULL SERVICE  
COMMERCIAL REAL ESTATE**  
1410 S University Park Blvd, Ste 120  
Clearfield, Utah 84015  
Office 801.578.5580  
[www.newmarkmw.com](http://www.newmarkmw.com)

# SECOND FLOOR

CONTIGUOUS AVAILABLE: 6,346 SF

**SUITE 203  
4,000 SF  
AVAILABLE**



**SUITE 201  
2,346 SF  
AVAILABLE  
10/1/2026**

**CHRIS FALK, CCIM, SIOR**  
cfalk@newmarkmw.com  
direct 801.499.6514  
[View Profile](#)

**BRAXTON WILLIE, CCIM**  
bwillie@newmarkmw.com  
direct 801.803.3334  
[View Profile](#)

**BRANSON WOOD**  
bwood@newmarkmw.com  
direct 801.510.5207  
[View Profile](#)

**FULL SERVICE  
COMMERCIAL REAL ESTATE**  
1410 S University Park Blvd, Ste 120  
Clearfield, Utah 84015  
Office 801.578.5580  
[www.newmarkmw.com](http://www.newmarkmw.com)

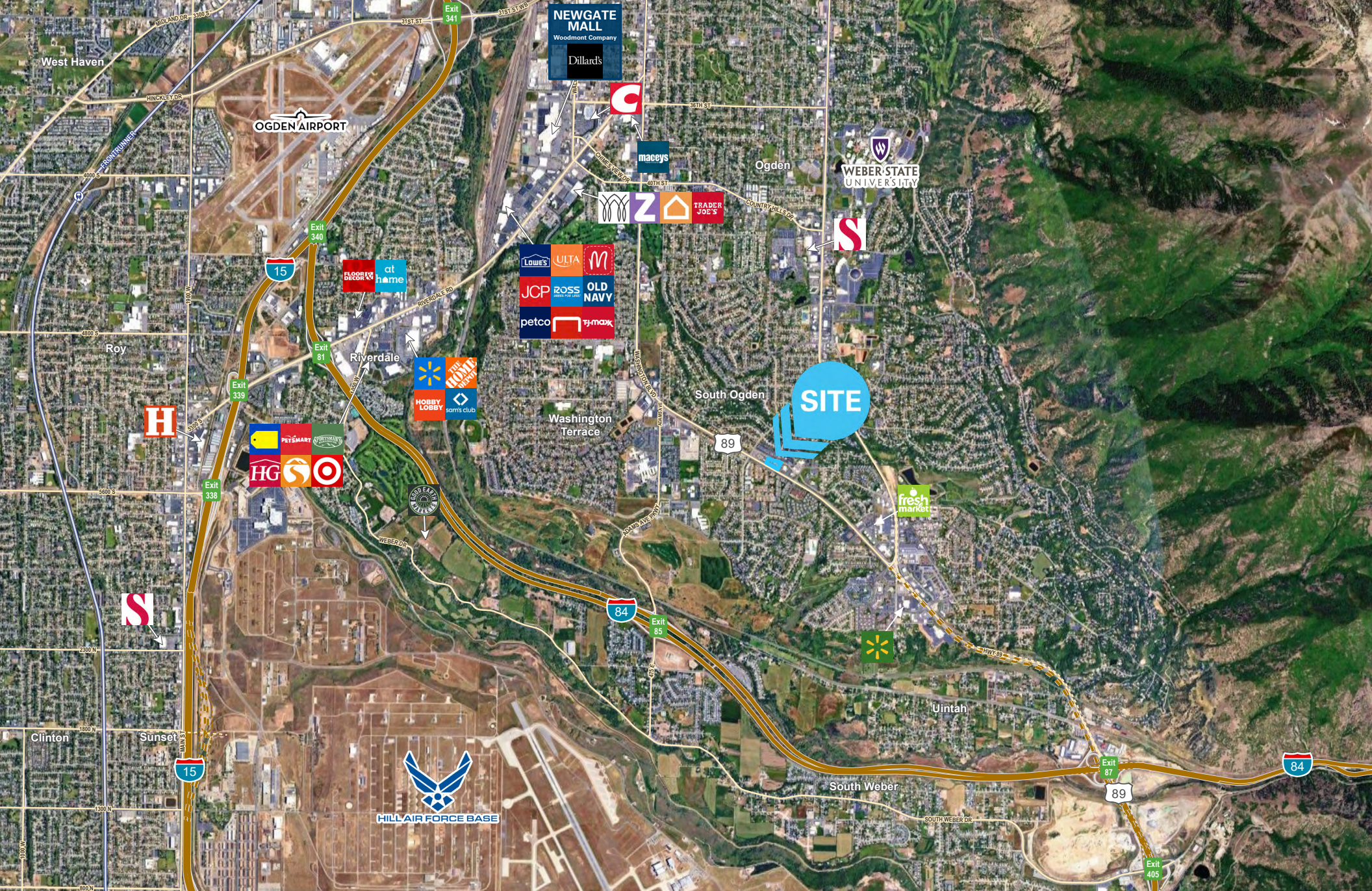


**CHRIS FALK, CCIM, SIOR**  
cfalk@newmarkmw.com  
direct 801.499.6514  
[View Profile](#)

**BRAXTON WILLIE, CCIM**  
bwillie@newmarkmw.com  
direct 801.803.3334  
[View Profile](#)

**BRANSON WOOD**  
bwood@newmarkmw.com  
direct 801.510.5207  
[View Profile](#)

**FULL SERVICE  
COMMERCIAL REAL ESTATE**  
1410 S University Park Blvd, Ste 120  
Clearfield, Utah 84015  
Office 801.578.5580  
[www.newmarkmw.com](http://www.newmarkmw.com)



**CHRIS FALK, CCIM, SIOR**  
 cfalk@newmarkmw.com  
 direct 801.499.6514  
[View Profile](#)

**BRAXTON WILLIE, CCIM**  
 bwillie@newmarkmw.com  
 direct 801.803.3334  
[View Profile](#)

**BRANSON WOOD**  
 bwood@newmarkmw.com  
 direct 801.510.5207  
[View Profile](#)

**FULL SERVICE  
 COMMERCIAL REAL ESTATE**  
 1410 S University Park Blvd, Ste 120  
 Clearfield, Utah 84015  
 Office 801.578.5580  
[www.newmarkmw.com](http://www.newmarkmw.com)