



OFFERING MEMORANDUM

# DOWNTOWN LIVE/WORK OPPORTUNITY

1324 COMMERCIAL ST, #1,  
BELLINGHAM, WA

GREG MARTINEAU, CCIM  
BROKER/ OWNER  
GREG@GAGECRE.COM  
(360) 820-4645

TRACY CARPENTER  
BROKER/ OWNER  
TRACY@GAGECRE.COM  
(360) 303-2608



[WWW.GAGECRE.COM](http://WWW.GAGECRE.COM)



# IMPORTANT DISCLOSURES

This Offering Memorandum (the "Memorandum") has been prepared by Gage Commercial Real Estate, LLC for informational purposes only. The information contained herein is believed to be reliable, but no representation or warranty, express or implied, is made regarding its accuracy, completeness, or correctness. Prospective purchasers are encouraged to conduct their own due diligence and consult with their advisors before making any investment decision.

This Memorandum is not an offer to sell or a solicitation of an offer to buy any securities or interests in the property. Any offering or solicitation will be made only to qualified prospective purchasers pursuant to applicable laws and regulations. The information contained in this Memorandum is confidential and is intended solely for the use of the recipient. It may not be reproduced or distributed, in whole or in part, without the prior written consent of Gage Commercial Real Estate, LLC.

Prospective purchasers should rely solely on their own investigation and evaluation of the property and any investment decision should be made based on the purchaser's own analysis. Gage Commercial Real Estate, LLC and its representatives make no representation or warranty, express or implied, as to the accuracy or completeness of the information contained herein.

By accepting this Memorandum, you agree to the above terms and conditions.





# THE OFFERING

2,263 SF | DOWNTOWN LIVE/ WORK OPPORTUNITY

Rare Live/Work Condo centrally located in Downtown Bellingham. 1,194 SF Ground-floor commercial space accessible with excellent visibility.

PROPERTY ADDRESS	1324 Commercial St, #1 Bellingham WA 98225
SQUARE FEET	2,263
LOT SIZE	0.16 Ac. (6,969.60 SF)
PARCEL NUMBER	3803301811760001
ASKING PRICE	\$760,000







# PROPERTY SUMMARY

Unique isn't descriptive enough for the 1,069 SF upstairs apartment space: large 1 bed , 1 bath, with Library and Office. Fully custom-designed and built by the Seller's, with impressive craftsmanship throughout. Heavily insulated, two sets of double pane windows on street side, skylights and beautiful wood built-ins throughout. Additional Storage: The property also features a downstairs bike garage, and a mezzanine level with 5-foot-ceiling-height (in between the upstairs and downstairs).

## HIGHLIGHTS

- Live/ Work Opportunity
  - 1 Commercial Unit (Ground Floor) - 1,194 SF
  - 1 Residential unit (Second Floor)- 1,069 SF
- Mezz Level Storage (5 ft. ceiling - spans whole building)
- Bike Garage
- Wood Built ins Throughout



### Walker's Paradise

Daily errands do not require a car.



### Good Transit

Many nearby public transportation options.



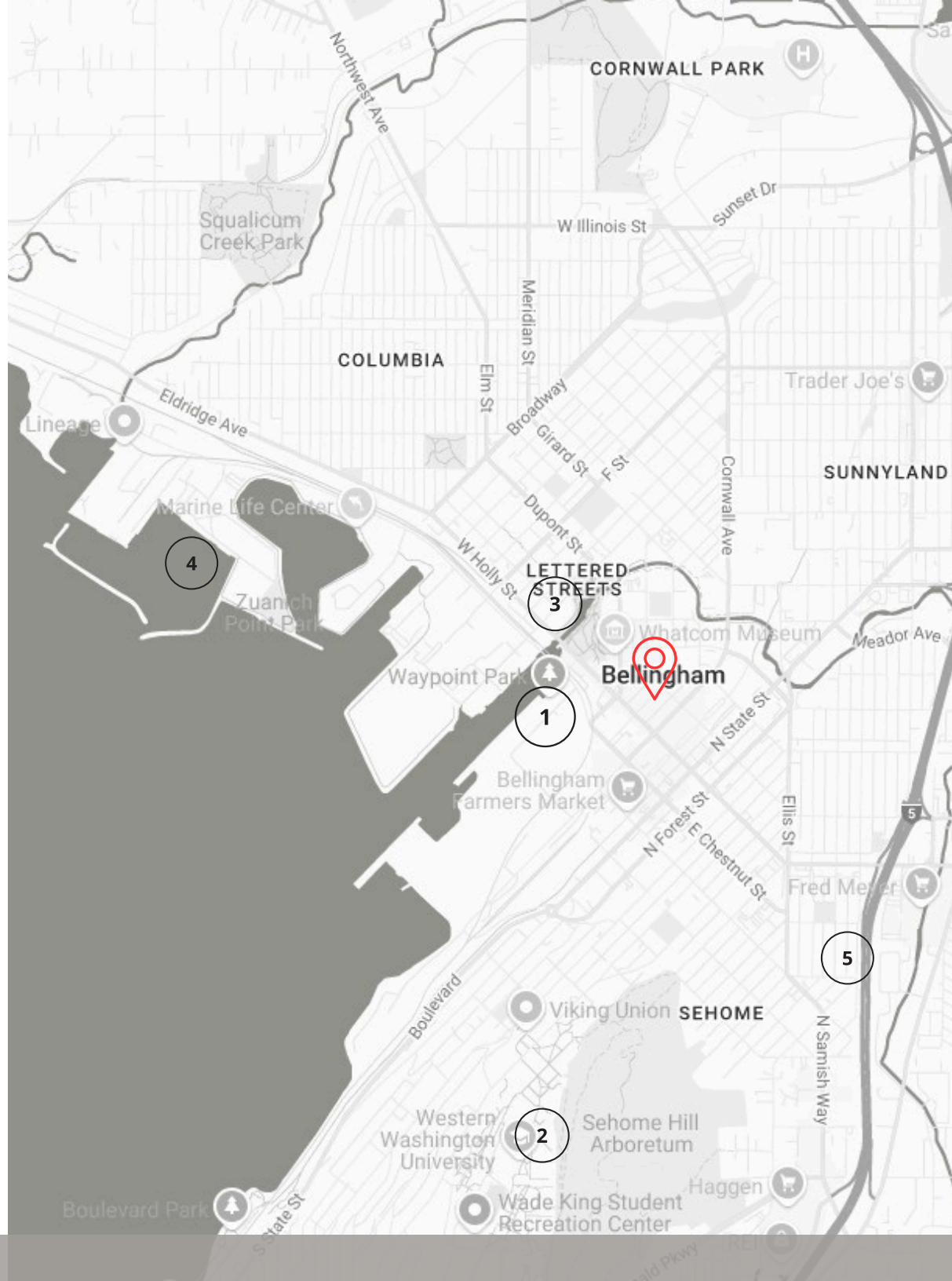
### Biker's Paradise

Daily errands can be accomplished on a bike.



# NEARBY AMENITIES

- 1 Bellingham Waypoint Park
- 2 Western Washington University
- 3 Maritime Heritage Park
- 4 Bellingham Harbor
- 5 I-5





# AERIAL



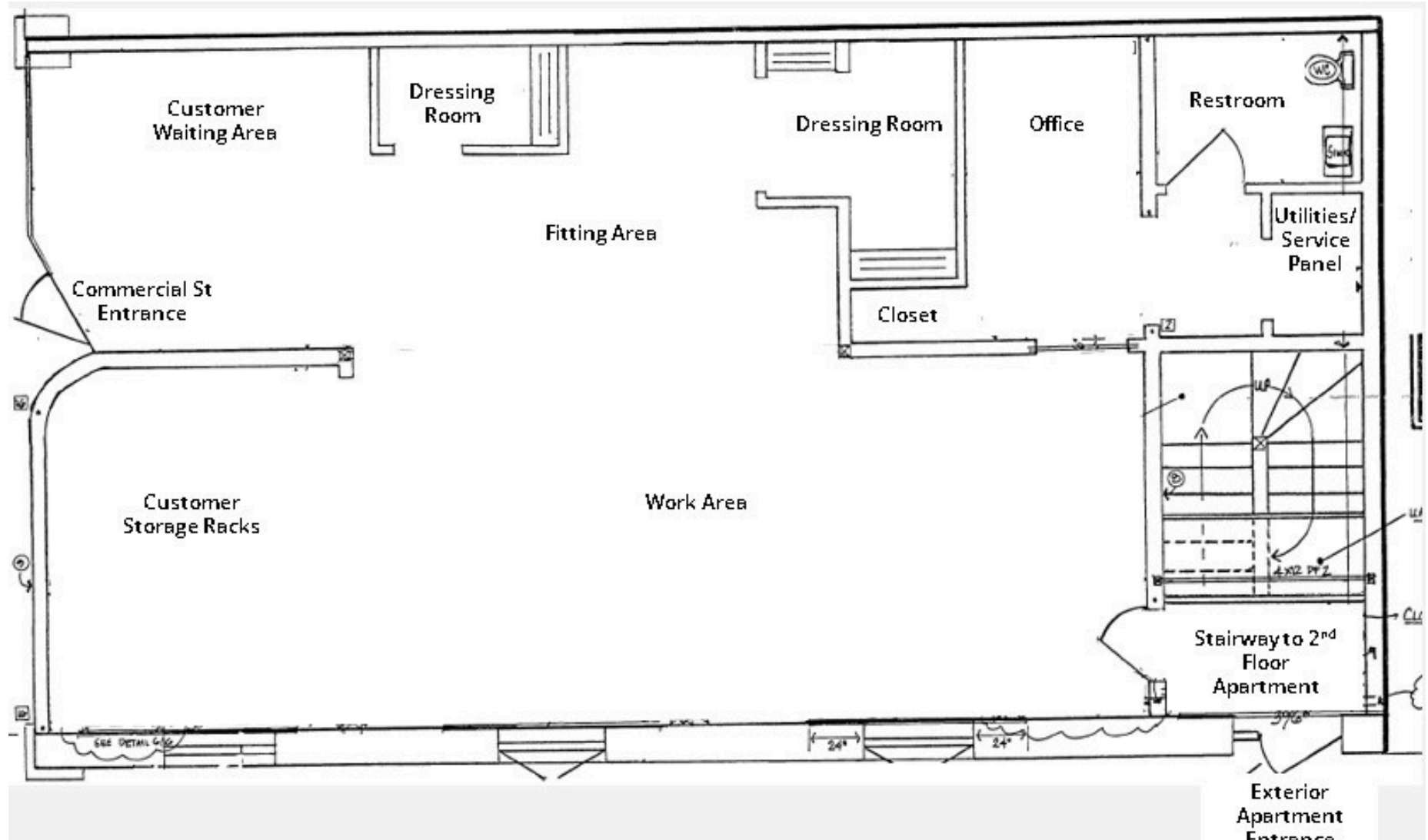
324 COMMERCIAL ST #1  
BELLINGHAM WA



1324 COMMERCIAL ST, #1, BELLINGHAM WA

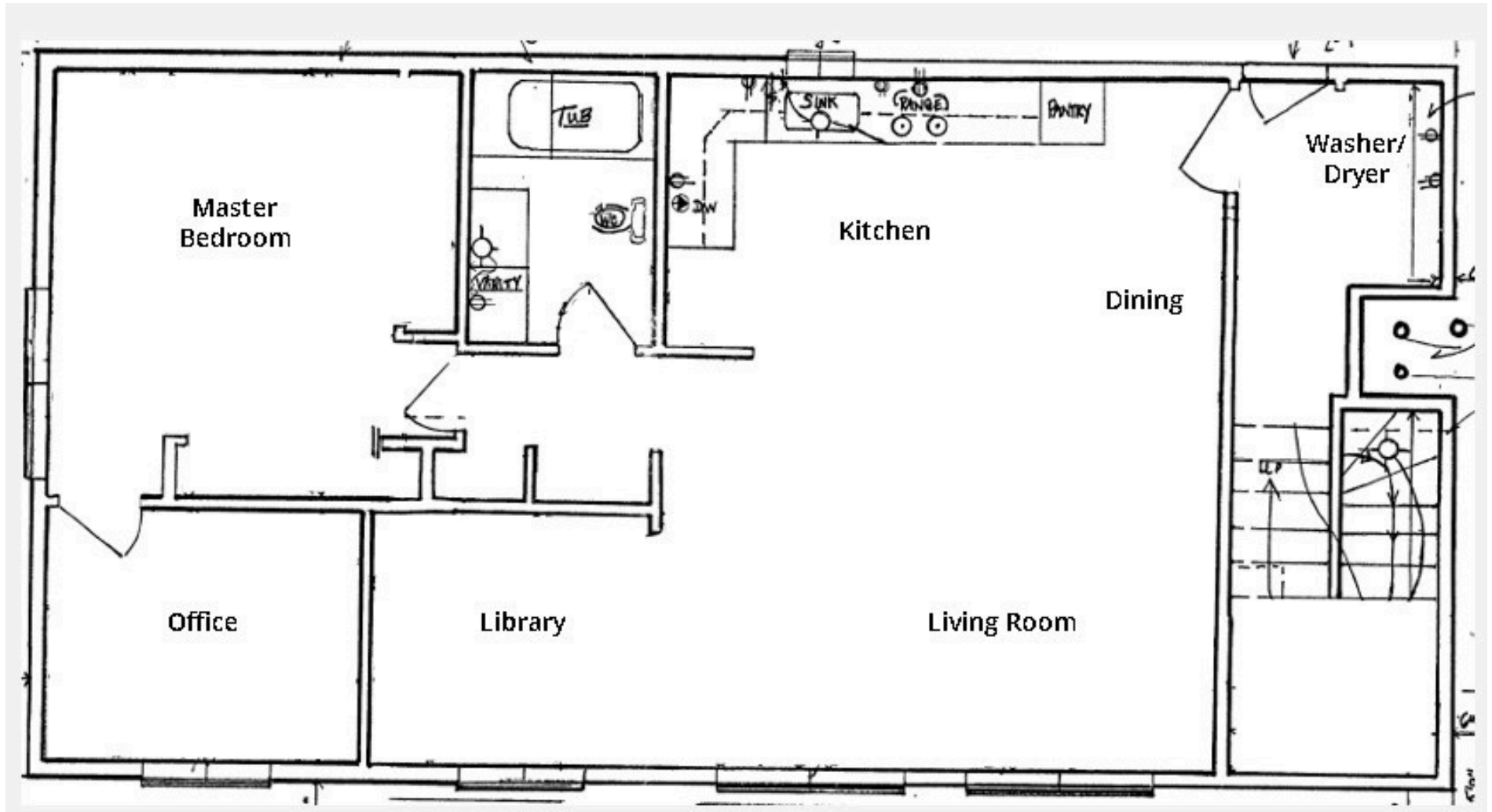


# FLOOR PLAN - GROUND FLOOR





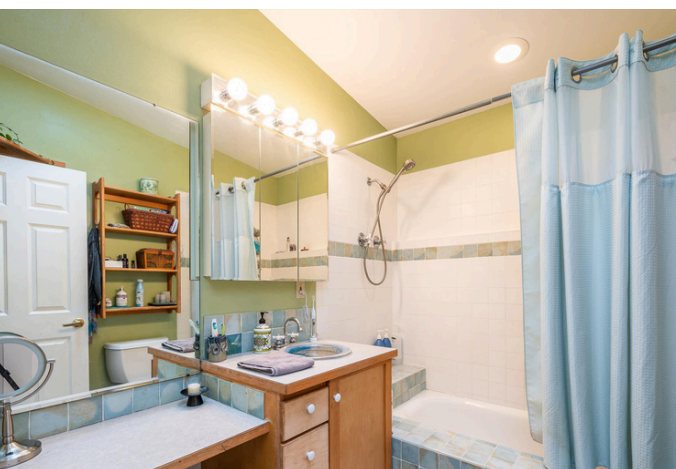
# FLOOR PLAN - SECOND FLOOR













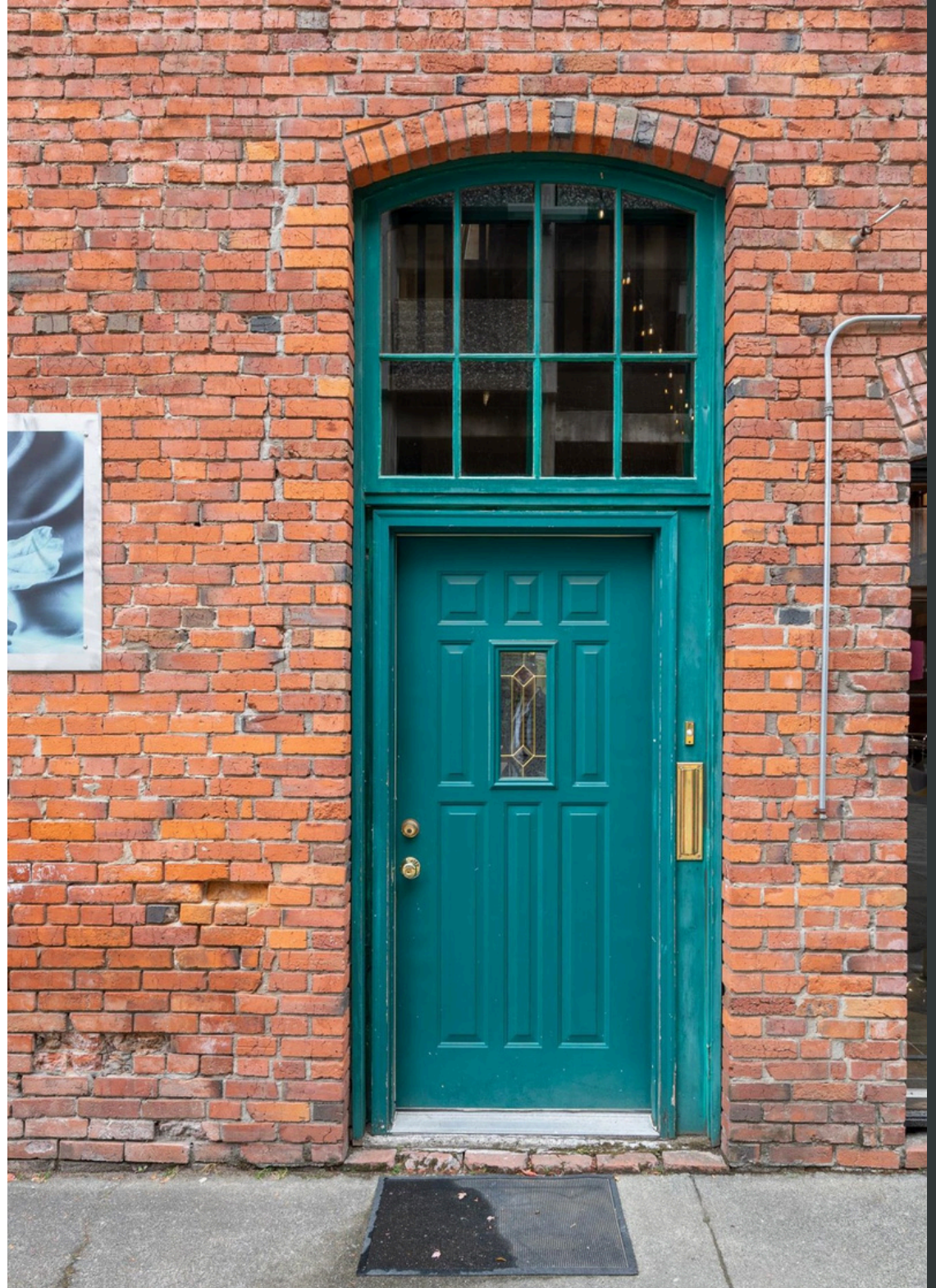
# AREA OVERVIEW

## BELLINGHAM, WA

On the shores of Bellingham Bay with Mount Baker as its backdrop, Bellingham is historically one of the Top 100 places to live in the Nation, and the last major city before the Washington coastline meets the Canadian border. The City of Bellingham, which serves as the county seat of Whatcom County, is at the center of a uniquely picturesque area offering a rich variety of recreational, cultural, educational and economic activities.

### Quick Facts:

- Population: 90,620
- Area: 30.1 square miles
- Travel distances
- Canadian border: 21 miles
- Vancouver, B.C: 52 miles
- Seattle: 90 miles
- Miles of bike lanes: 61.1
- Miles of trails: 68.7







## CONTACT

Greg Martineau, CCIM  
Broker/ Owner  
360-820-4645  
Greg@gagecre.com

Tracy Carpenter  
Broker/ Owner  
360-303-2608  
Tracy@gagecre.com



Gage Commercial Real Estate, LLC | 809 W Orchard Dr, Ste 7, Bellingham, WA |  
360-483-0508 | greg@gagecre.com, tracy@gagecre.com  
www.GageCRE.com