



Property Description

- Two large water features and spacious wooded greenbelt
- High visibility from the Kilpatrick Turnpike
- Within minutes of Downtown OKC, Edmond and the Memorial Corridor
- Convenient access to Broadway Extension and Kilpatrick Turnpike

Property Highlights

- AVAILABLE FOR SALE
- 1.6 to 8.1 Acre Parcels
- All Utilities in Place
- Water Features
- Greenbelt

Offering Summary

Sale Price: \$10.00 / SF

Lot Size: 13.9 Acres

Demographics

	1 Mile	5 Miles	10 Miles
Total Households	1,105	59,940	182,486
Total Population	2,648	147,060	439,709
Average HH Income	\$79,174	\$72,419	\$72,897

RICK PRITCHETT, CCIM

405.605.0831

rick@precorrealty.com



PRECOR
REALTY ADVISORS

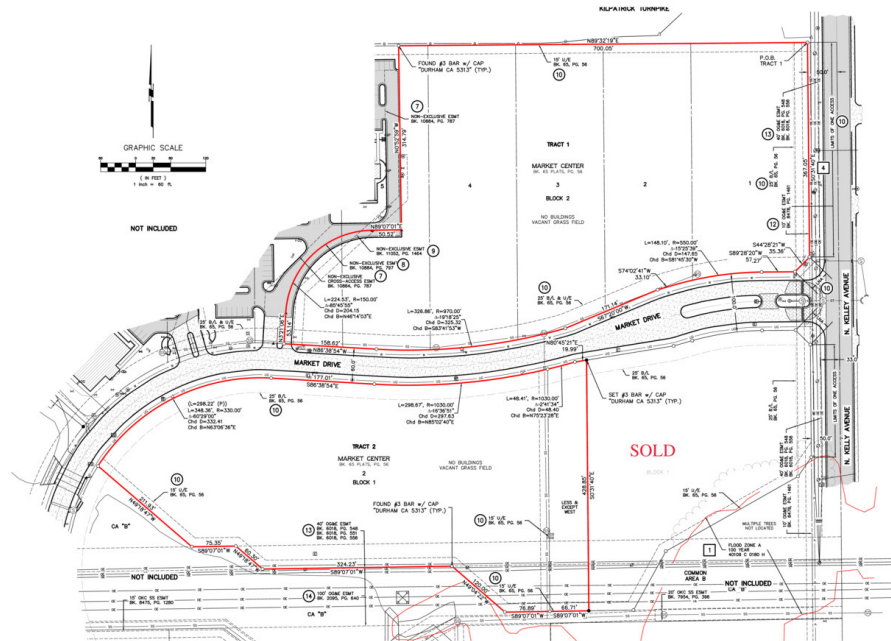
PRECOR REALTY ADVISORS, INC | 825 N. BROADWAY, SUITE 300, OKLAHOMA CITY, OK 73102 | 405.605.0825 | PRECORREALTY.COM

The information above has been obtained from sources believed reliable. While we do not doubt its accuracy, PrecorRuffin, LLC has not verified it and makes no guarantee, warranty or representation about it. It is your responsibility to independently confirm its accuracy.

For Sale

Broadway Ext. & Kilpatrick Turnpike

MARKET CENTER



RICK PRITCHETT, CCIM

405.605.0831

rick@precorreality.com

PRECOR REALTY ADVISORS, INC | 825 N. BROADWAY, SUITE 300, OKLAHOMA CITY, OK 73102 | 405.605.0825 | PRECORREALTY.COM

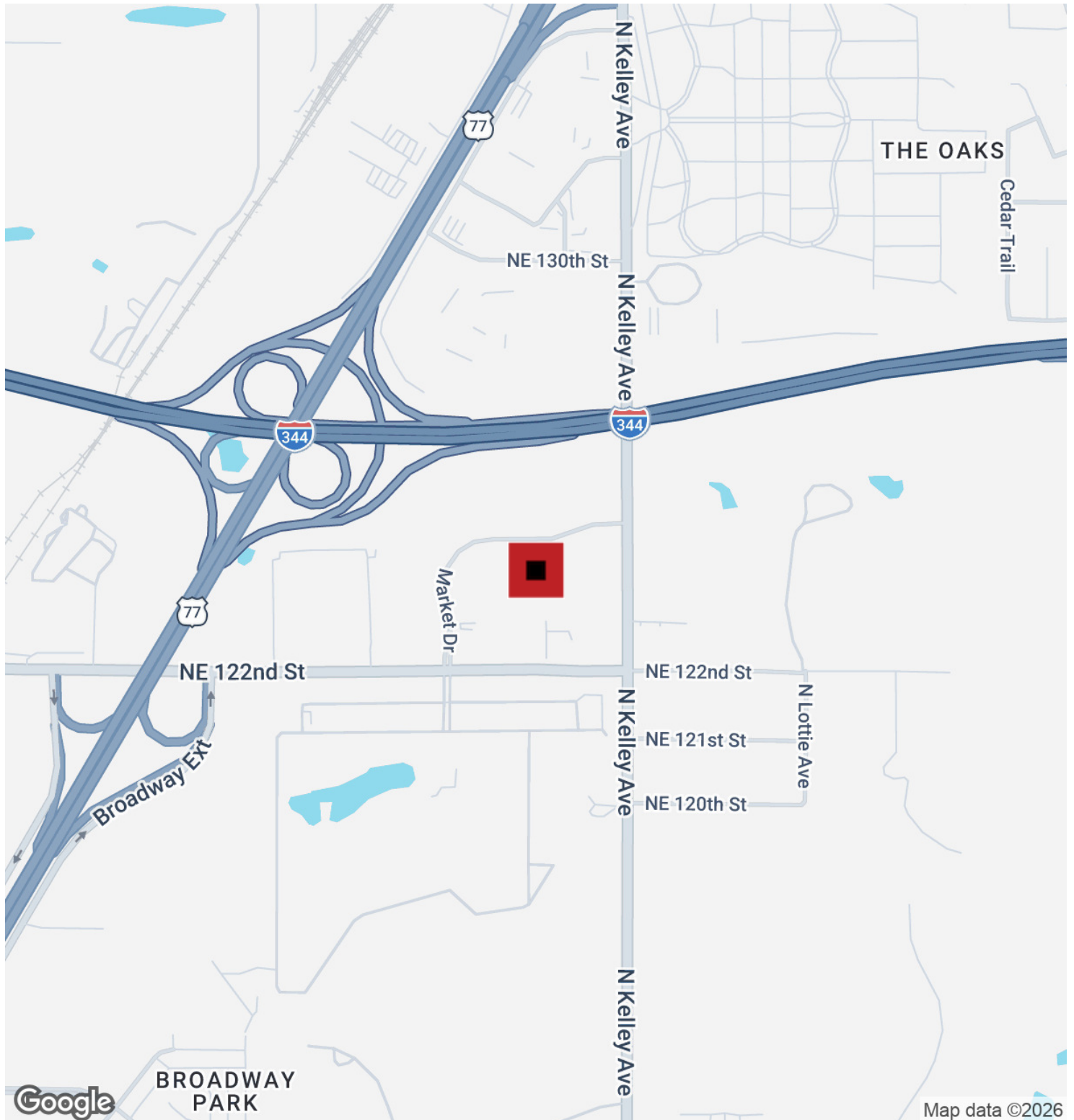


The information above has been obtained from sources believed reliable. While we do not doubt its accuracy, PrecorRuffin, LLC has not verified it and makes no guarantee, warranty or representation about it. It is your responsibility to independently confirm its accuracy.

For Sale

Broadway Ext. & Kilpatrick Turnpike

MARKET CENTER



RICK PRITCHETT, CCIM

405.605.0831

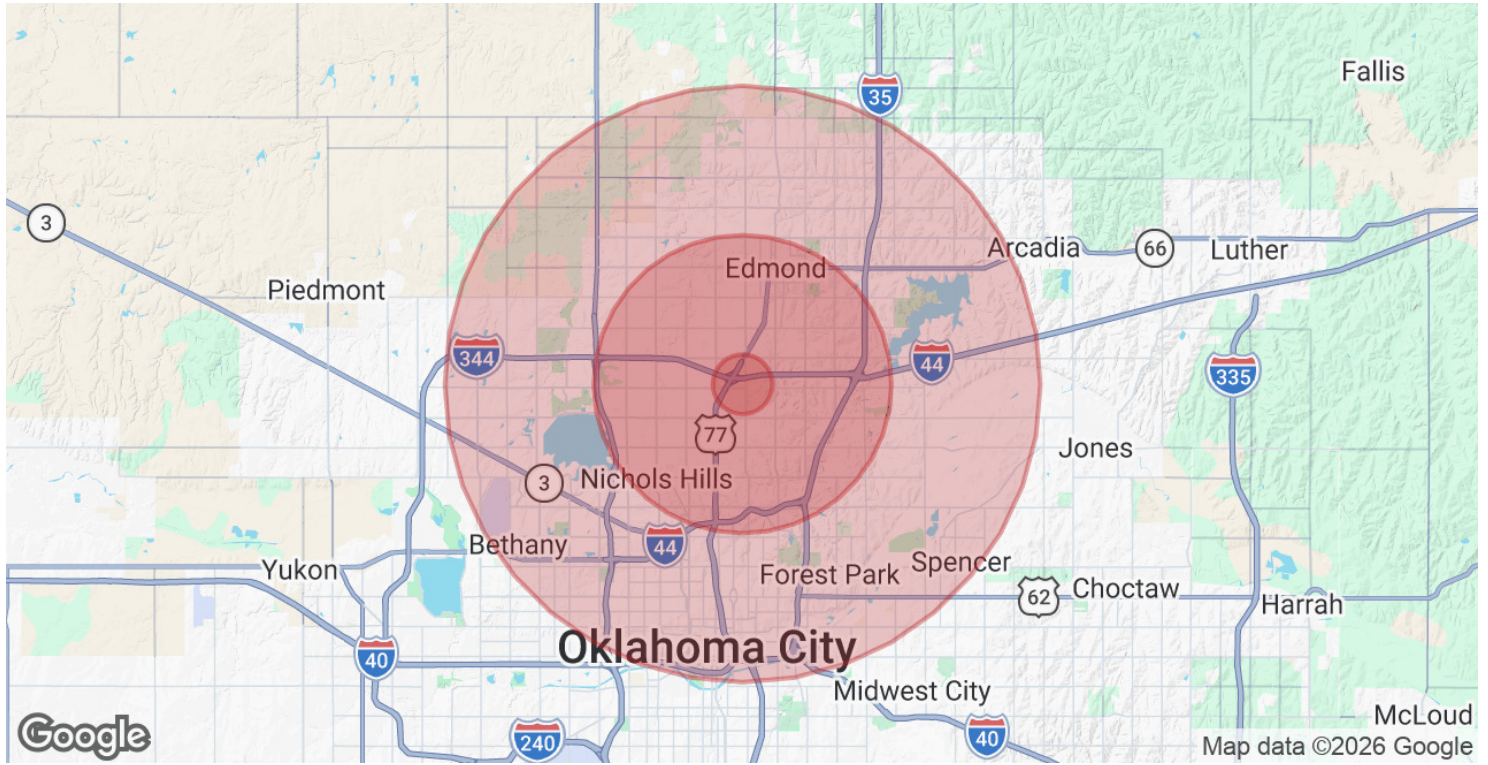
rick@precorrealty.com



PRECOR
REALTY ADVISORS

PRECOR REALTY ADVISORS, INC | 825 N. BROADWAY, SUITE 300, OKLAHOMA CITY, OK 73102 | 405.605.0825 | PRECORREALTY.COM

The information above has been obtained from sources believed reliable. While we do not doubt its accuracy, PrecorRuffin, LLC has not verified it and makes no guarantee, warranty or representation about it. It is your responsibility to independently confirm its accuracy.



Population	1 Mile	5 Miles	10 Miles
Total Population	2,648	147,060	439,709
Average Age	31.2	33.4	36.0
Average Age (Male)	30.0	31.2	34.7
Average Age (Female)	32.6	35.0	37.0

Households & Income	1 Mile	5 Miles	10 Miles
Total Households	1,105	59,940	182,486
# of Persons per HH	2.4	2.5	2.4
Average HH Income	\$79,174	\$72,419	\$72,897
Average House Value	\$260,151	\$197,907	\$201,143

2020 American Community Survey (ACS)

RICK PRITCHETT, CCIM

405.605.0831

rick@precorrealty.com



PRECOR REALTY ADVISORS, INC | 825 N. BROADWAY, SUITE 300, OKLAHOMA CITY, OK 73102 | 405.605.0825 | PRECORREALTY.COM

The information above has been obtained from sources believed reliable. While we do not doubt its accuracy, PrecorRuffin, LLC has not verified it and makes no guarantee, warranty or representation about it. It is your responsibility to independently confirm its accuracy.