

# 1401 VAN NESS AVENUE

FOR LEASE | FORMER STARBUCKS SPACE | MANY USES CONSIDERED

**TCP**  
**TOUCHSTONE**  
COMMERCIAL PARTNERS



# 1401 VAN NESS AVENUE

## PROPERTY SUMMARY

### ADDRESS

1401 Van Ness Avenue, San Francisco, CA 94109

### AVAILABLE SPACE

+/- 1,236 Square Feet

*\*Additional Storage Space Available*

### RENTAL RATE

\$4,000 / Month, Industrial Gross

### AVAILABLE

Immediately

## BUILDING ATTRIBUTES

- + Cafe Infrastructure
- + ADA Compliant Entrance and Lift
- + Hard Corner Location
- + Significant Glass Frontage on Van Ness and Bush
- + Wraparound Signage



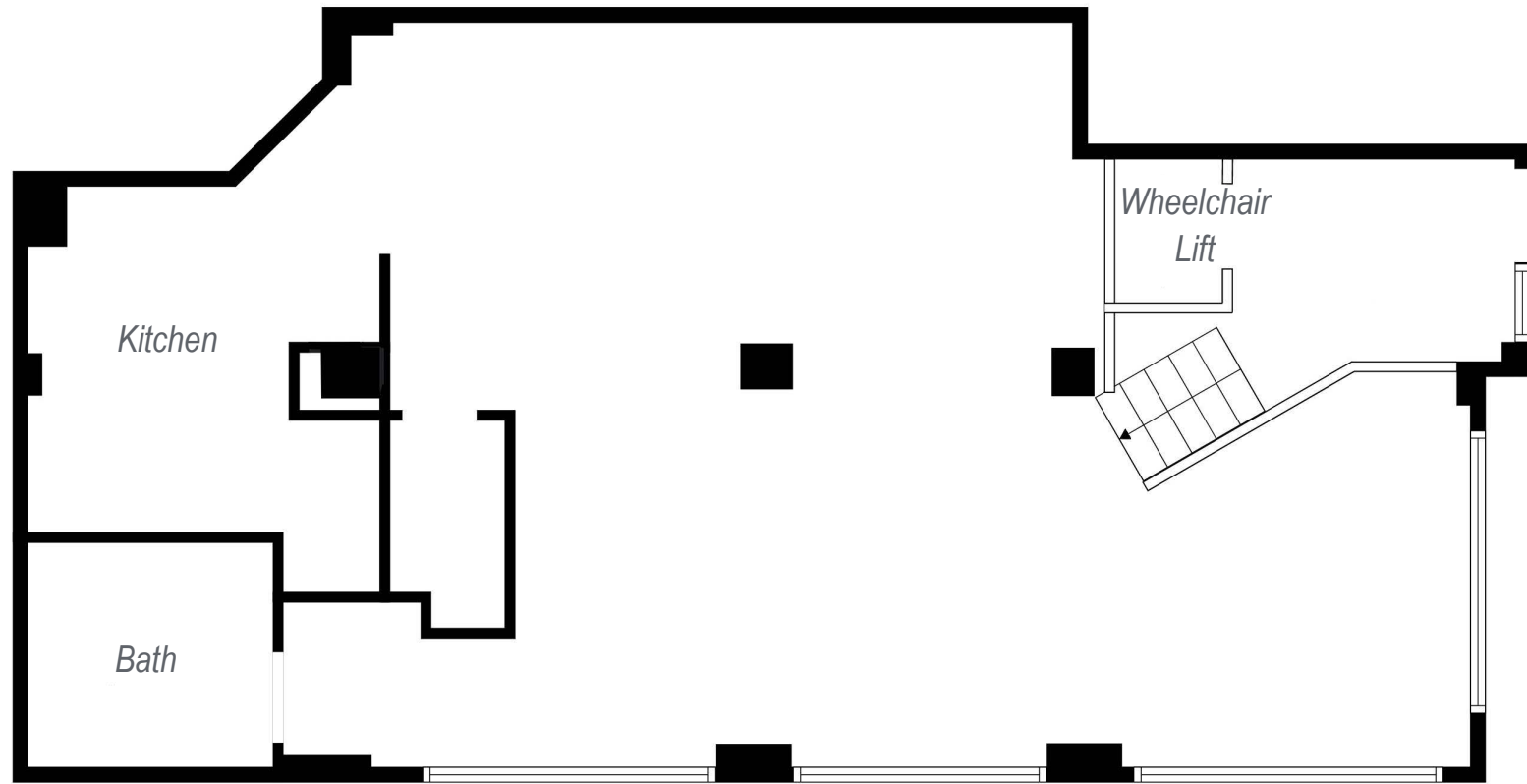
# 1401 VAN NESS AVENUE



# 1401 VAN NESS AVENUE

## FLOOR PLAN

+/- 1,236 Square Feet



BUSH STREET

VAN NESS AVENUE

# 1401 VAN NESS AVENUE

## LOCATION OVERVIEW

Desirable Van Ness Corridor location, walkable to nearby amenities, public transportation and to surrounding neighborhoods.



**02 MIN** to Bush St Muni  
**02 MIN** to CPMC Van Ness  
**19 MIN** to Civic Center Bart



**05 MIN** to Pacific heights  
**10 MIN** to Mission District  
**11 MIN** to SOMA



**08 MIN** to 101 On-Ramp  
**12 MIN** to 80 On-Ramp  
**16 MIN** to 280 On-Ramp

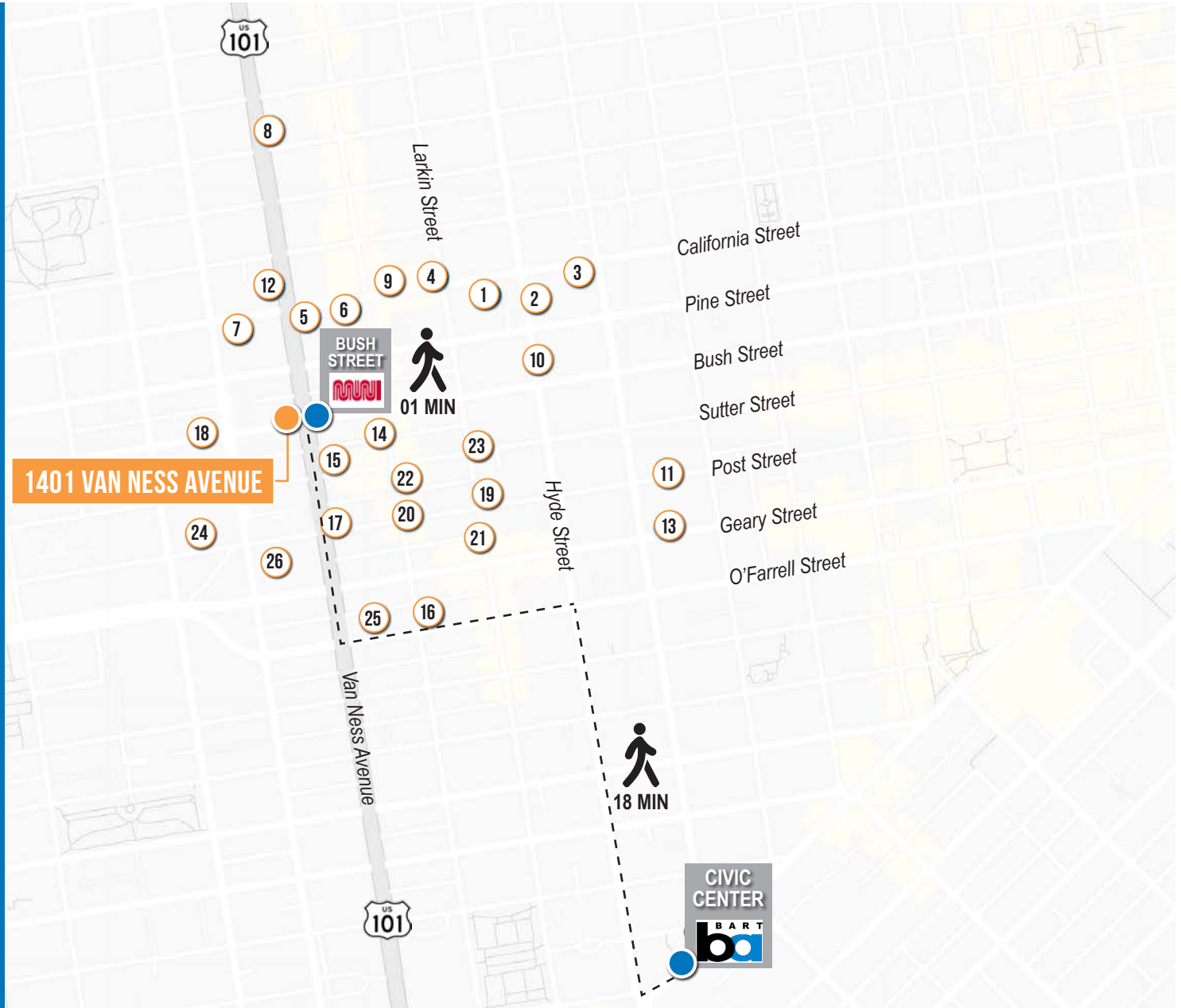
**1401**  
VAN NESS AVENUE



# 1401 VAN NESS AVENUE

## NEARBY AMENITIES

- 1..... Trader Joe's
- 2..... Nourish Cafe
- 3..... Zeki's Bar
- 4..... Mymy
- 5..... Starbucks
- 6..... Crustacean Restaurant
- 7..... Whole Foods Market
- 8..... House of Prime Rib
- 9..... Cordon Bleu Restaurant
- 10..... Saint Francis Hospital
- 11..... Farm : Table
- 12..... Guitar Center
- 13..... Mensho Tokyo SF
- 14..... Mayes Oyster House
- 15..... The Regency Ballroom
- 16..... Bread & Butter Market & Deli
- 17..... 24 Hour Fitness
- 18..... Akira Japanese Restaurant
- 19..... Members Only
- 20..... Jackalope
- 21..... Jane on Larkin
- 22..... DecoDance Bar
- 23..... halal DASTARKHAN
- 24..... Walgreens
- 25..... City Smoke House
- 26..... CPMC Van Ness



# 1401 VAN NESS AVENUE



MEMBERS ONLY



CPMC VAN NESS



WHOLE FOODS MARKET



24 HOUR FITNESS



RUTH CHRIS'S STEAK HOUSE

# 1401 VAN NESS AVENUE



**JARON ELIOPOULOS** DRE # 01975155  
415.608.6336 | [jaron@tcpre.com](mailto:jaron@tcpre.com)

**CAMERON TU** DRE # 02100436  
510.919.8193 | [cameron@tcpre.com](mailto:cameron@tcpre.com)

[VISIT ELIOPOULOSGROUP.COM](http://VISIT ELIOPOULOSGROUP.COM)

Corp. Lic. 01112906  
[www.tcpre.com](http://www.tcpre.com)

The information presented has been secured from sources we believe to be reliable but we make no representations or warranties, expressed or implied, as to the accuracy of the information. Lessee must verify the information and bears all risk for any inaccuracies.