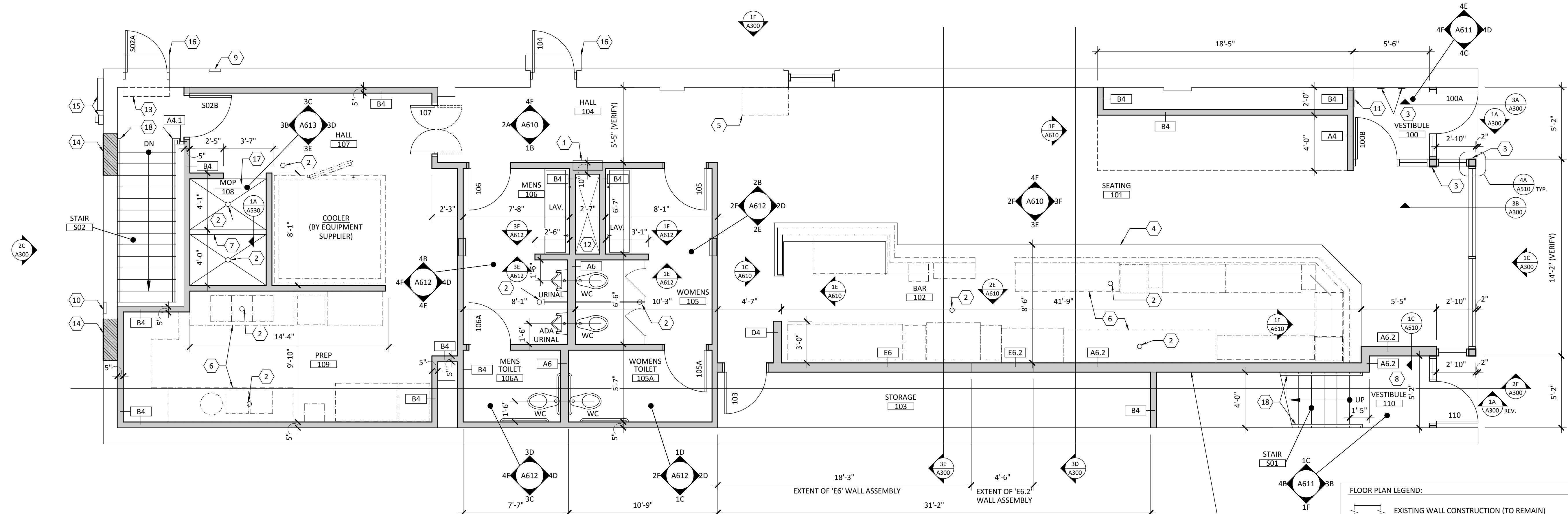


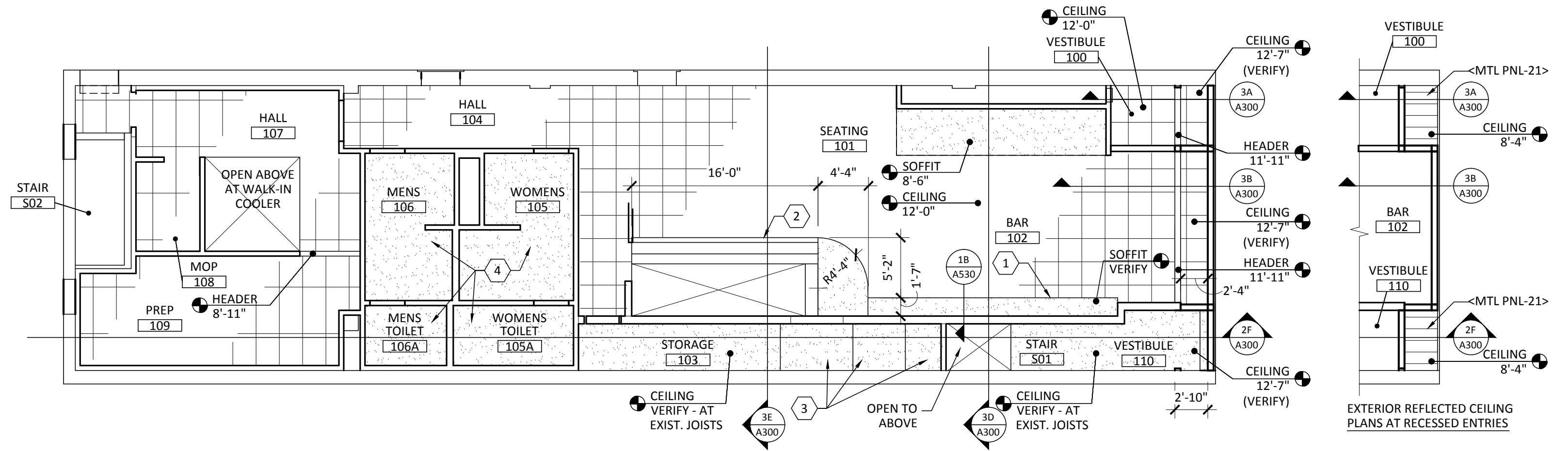
I hereby certify that this plan was prepared by me or under my direct supervision and that I am a duly licensed architect under the laws of the State of Minnesota.
Nicole Washburn, AIA, LEED AP
Reg. No. 46516
Exp. 8/18/2015



2F FIRST FLOOR PLAN
SCALE: 1/4" = 1'-0"

- FLOOR PLAN LEGEND:**
- EXISTING WALL CONSTRUCTION (TO REMAIN)
 - NEW WALL CONSTRUCTION
- GENERAL FLOOR PLAN NOTES:**
1. MECHANICAL, ELECTRICAL, PLUMBING & FIRE PROTECTION DESIGN BUILD (COORDINATE AS REQUIRED).
 2. TYPICAL INTERIOR WALL ASSEMBLY: 'A4' (UNLESS NOTED OTHERWISE).
 3. TYPICAL FLOOR ASSEMBLY AT FIRST FLOOR: 'F1' (UNLESS NOTED OTHERWISE).
 4. DIMENSIONS TO FINISH FACE (UNLESS NOTED OTHERWISE).
 5. COORDINATE FLOOR PENETRATIONS WITH EQUIPMENT SUPPLIER AND M.E.P. CONTRACTORS.
 6. PROVIDE FIRE STOPPING AS REQUIRED AT PENETRATIONS AND JOINTS AT RATED WALLS & FLOORS.
 7. PROVIDE IN-WALL BLOCKING AS REQ'D FOR EQUIPMENT, ACCESSORIES, SHELVING & FIXTURES.
 8. ALL MATERIALS WITHIN 18" OF THE EXHAUST HOOD MUST BE NON-COMBUSTIBLE MATERIALS.
 9. VERIFY WITH OWNER AND COORDINATE WITH ELECTRICAL ALL TV LOCATIONS AND PROVIDE POWER/DATA & BLOCKING AS REQUIRED.
 10. INSTALL ALUMINUM CORNER GUARDS AT HIGH TRAFFIC AREAS (VERIFY SIZE AND LOCATIONS WITH OWNER).
- FIRST FLOOR PLAN KEYNOTES**
- 1 ATM (COORDINATE WITH OWNER)
 - 2 FLOOR DRAIN (COORDINATE LOCATION WITH PLUMBING & EQUIPMENT DRAWINGS AS REQUIRED)
 - 3 PUSH BUTTON DOOR OPERATOR
 - 4 BAR CONSTRUCTION (BY EQUIPMENT SUPPLIER - COORDINATE AS REQUIRED)
 - 5 POINT OF SALE (P.O.S.) STATION (BY EQUIPMENT SUPPLIER - COORDINATE AS REQUIRED)
 - 6 EQUIPMENT (BY EQUIPMENT SUPPLIER - COORDINATE AS REQUIRED)
 - 7 MOP BASIN, SLOPED TO DRAIN WITH <VNL SHT-1> FINISH
 - 8 'F1.2' FLOOR ASSEMBLY AT VESTIBULE 110
 - 9 CO2 HOOK UP - CONNECT TO CO2 TANKS & COORDINATE AS REQUIRED (VERIFY LOCATION WITH OWNER)
 - 10 GREASE TANK HOOK UP - CONNECT TO GREASE TANK & COORDINATE AS REQUIRED (VERIFY LOCATION WITH OWNER)
 - 11 CABINET UNIT HEATER (COORDINATE WITH ELECTRICAL)
 - 12 MECHANICAL CHASE (SEE STRUCTURAL FOR FLOOR PENETRATION)
 - 13 AIR CURTAIN ABOVE DOOR (COORDINATE WITH ELECTRICAL)
 - 14 INFILL EXISTING MASONRY OPENING - CMU BACK UP WITH EXTERIOR BRICK FINISH TO MATCH ADJACENT
 - 15 EXISTING ELECTRIC METERS (COORDINATE & VERIFY LOCATION WITH ELECTRICAL)
 - 16 REPAIR EXISTING STEP AS REQUIRED
 - 17 SLOPE FLOOR TO DRAIN
 - 18 METAL HANDRAILS AT BOTH SIDES OF STAIRS WITH PT-5 FINISH

- REFLECTED CEILING PLAN LEGEND**
- PAINTED GYPSUM BOARD
 - METAL CEILING PANELS <CLG PNL>
 - ACOUSTIC CEILING TILES <ACT>
- REFLECTED CEILING PLAN GENERAL NOTES**
1. TYPICAL CEILING HEIGHT 9'-0" (UNLESS NOTED OTHERWISE)
 2. MECHANICAL, ELECTRICAL, PLUMBING & FIRE PROTECTION DESIGN BUILD (COORDINATE AS REQUIRED).
 3. VERIFY AND COORDINATE EXPOSED DUCT LOCATIONS WITH MECHANICAL AND OWNER.
 4. PROVIDE PROTECTION AT EXPOSED OVERHEAD DUCTS, CONDUIT AND PIPES AT CEILINGS AS REQUIRED BY CITY CODE AND DEPARTMENTS.
 5. INSTALL GYPSUM BOARD FINISH AT FLOOR JOISTS ABOVE DROP CEILINGS AT RATED FLOOR ASSEMBLIES. REFER TO 2ND FLOOR PLAN FOR RATED FLOOR/CEILING ASSEMBLY TYPE.
 6. INSTALL GYPSUM BOARD AT RATED FLOOR/CEILING ASSEMBLY CONTINUOUS AT NON-RATED WALL ASSEMBLIES
- REFLECTED CEILING PLAN KEYNOTES**
- 1 BACKBAR SOFFIT (FRAMING/FINISH BY G.C. & PANELS BY EQUIPMENT SUPPLIER - COORDINATE AS REQUIRED) VERIFY HEIGHT WITH EQUIPMENT SUPPLIER
 - 2 KITCHEN HOOD (BY EQUIPMENT SUPPLIER)
 - 3 INSTALL 'C4.2' SHAFT WALL ASSEMBLY AT BOTTOM SIDE OF STAIR CONSTRUCTION
 - 4 INSTALL DROP CEILING CONSTRUCTION WITH <GYP BD-1> FINISH



1F FIRST FLOOR REFLECTED CEILING PLAN
SCALE: 1/8" = 1'-0"