

— THE SEASONS AT PERK PARK —

1116 CHESTER AVE - SUITE 106

— DOWNTOWN CLEVELAND —

— FOR LEASE —

2,915 SF

MARCIE GILMORE  
216.706.2287  
[mgilmore@crminc.us](mailto:mgilmore@crminc.us)

CRM  
COMPANIES

# PROPERTY CONTEXT



20'



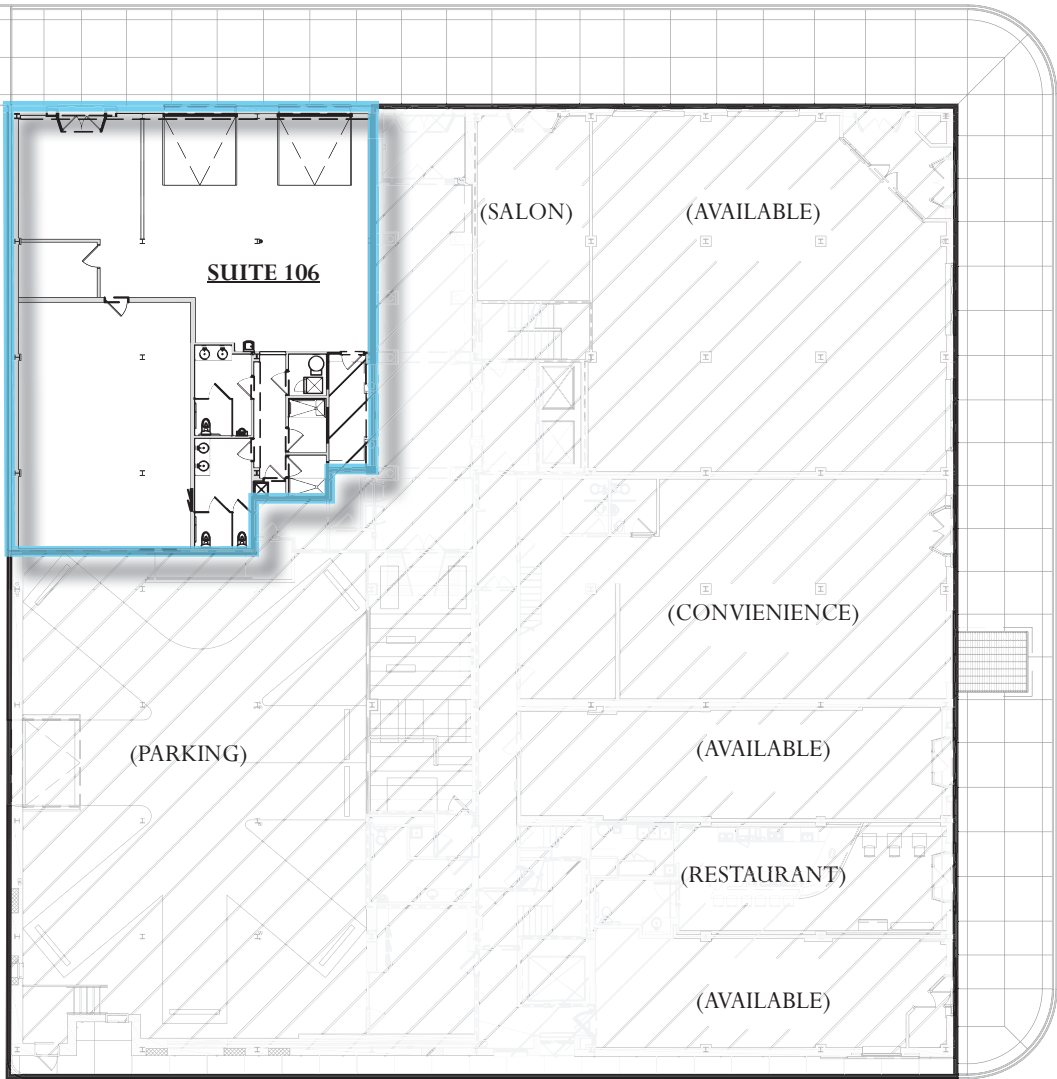
- 2 Ohio Savings Bank
- 4 E 4<sup>th</sup> Street
- 6 Rocket Mortgage FieldHouse
- 8 Heinen's
- 10 Cuyahoga County Administration
- 12 Playhouse Square
- Mixed-Use Residential
- 1 Perk Park
- 3 PNC Bank
- 5<sup>th</sup> Street Arcade
- 7 Progressive Field
- 9 Metropolitan at the 9
- 11 US Bank
- P Parking

## DEMOGRAPHICS

	10-MIN. WALK	1 MILE RADIUS	CITY OF CLEVELAND
POPULATION	29,280	135,000	385,282
AVG. HOUSEHOLD INCOME	\$73,801	\$52,142	\$41,643
TOTAL HOUSEHOLDS	7,439	20,535	211,902
MEDIAN AGE	25-34	25-35	35.8

CHESTER AVENUE

HICKORY COURT



EAST 12TH STREET

HICKORY COURT

MARCIE GILMORE  
 216.706.2287  
[mgilmore@crminc.us](mailto:mgilmore@crminc.us)



# PROPERTY DETAILS

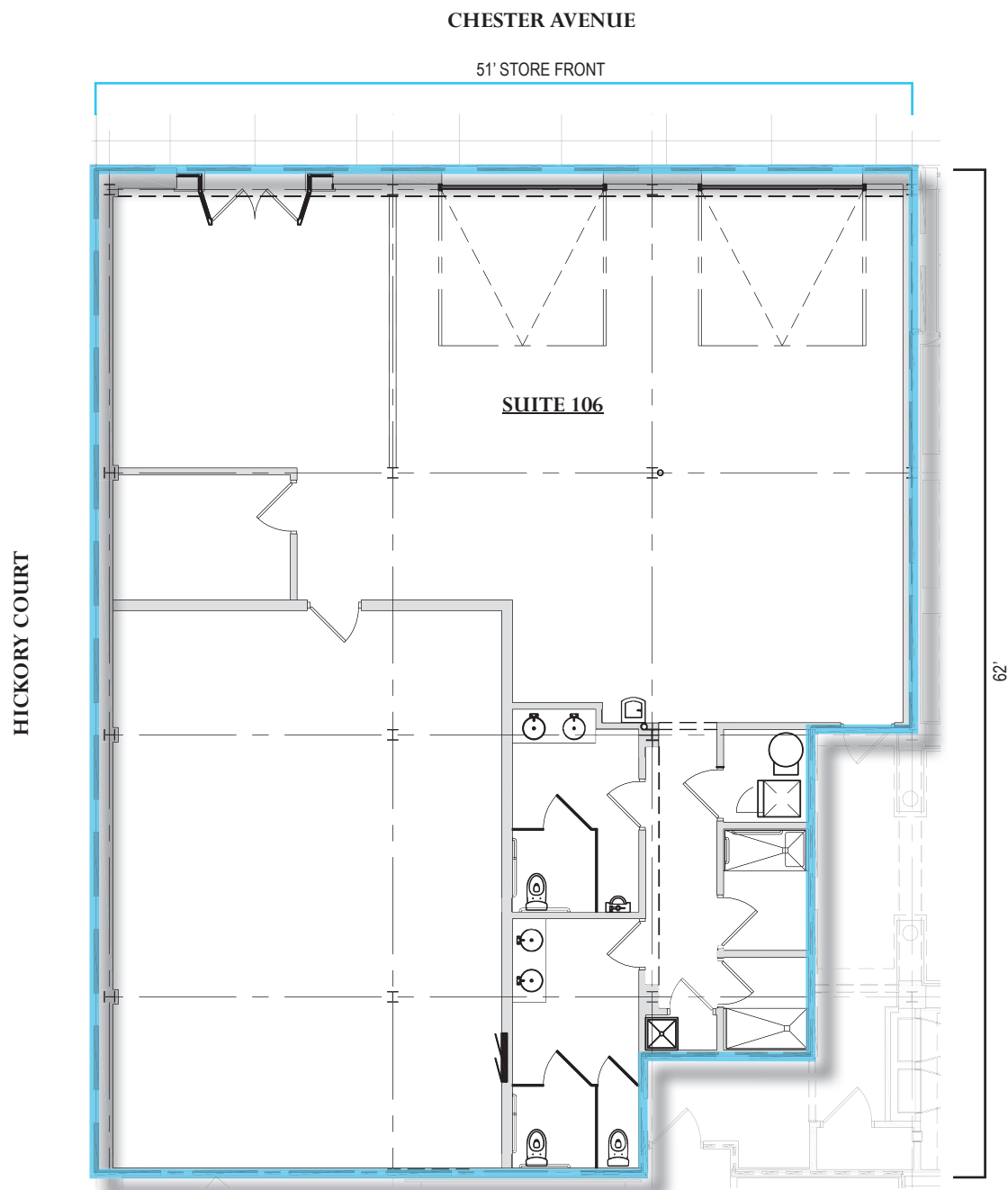


## THE SPACE

USE: RETAIL/RESTAURANT/BUSINESS  
STATUS: IMMEDIATE AVAILABILITY  
RATE: STARTING AT \$17/SF + UTILITIES  
FLOOR: FIRST  
AREA: 2,915 SF  
CLEAR HT: 15'-9"  
CONDITION: RENOVATED IN 2017  
ADDRESS: [1116 CHESTER AVENUE CLEVELAND, OH 44114](#)

## THE BUILDING

1924 HISTORICAL 4-STORY, 70,305 SF MIXED-USE BUILDING WITH LUXURY APARTMENTS ABOVE IN-LINE STOREFRONT.



MARCIE GILMORE  
216.706.2287  
[mgilmore@crminc.us](mailto:mgilmore@crminc.us)





**EXISTING CONDITIONS**

- 1. INTERIOR LOOKING NORTH TO PERK PARK
- 2. SUITE 106 ENTRY
- 3. INTERIOR BACK ROOM LOOKING NORTHEAST
- 4. INTERIOR FRONT SPACE LOOKING SOUTHWEST

MARCIE GILMORE  
216.706.2287  
[mgilmore@crminc.us](mailto:mgilmore@crminc.us)

