

INDUSTRIAL LAND/CONTRACTOR'S YARD FOR LEASE

23325 Cajalco Rd, Perris, CA 92570



PROPERTY HIGHLIGHTS:

- Fenced Yard Available for Lease
- Immediate 215 FWY Access at Cajalco Expressway
- ±3.16 Acres/ 137,649 SF Land for Lease
- County of Riverside M-SC Zoning (Verify)
- Owner to lay Class 2 Base (thin gravel) for the right credit and terms*



LEE &
ASSOCIATES

COMMERCIAL REAL ESTATE SERVICES

CODY MORAN
VICE PRESIDENT

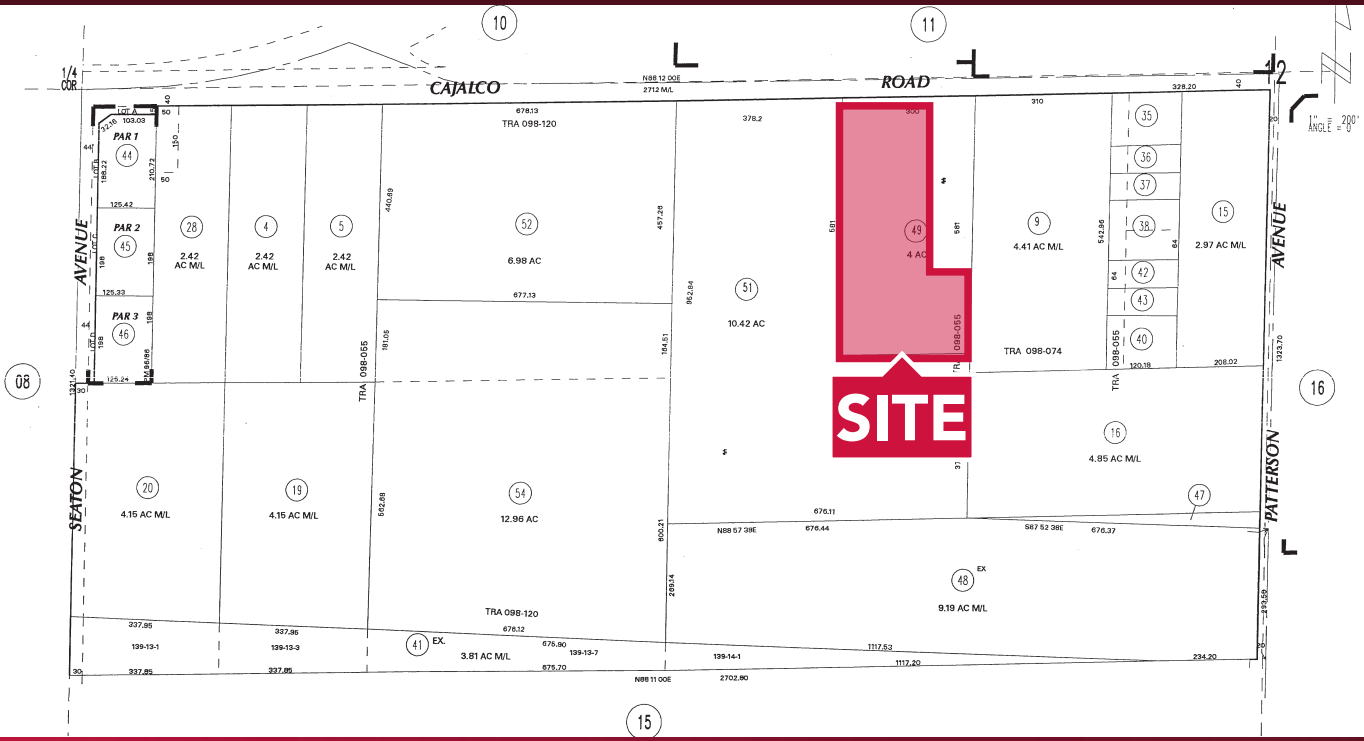
951.276.3624 | DRE#: 02036603
CMORAN@LEERIVERSIDE.COM

3240 Mission Inn Avenue, Riverside, CA 92507 | 951.276.3600 | Corporate DRE#: 01048055 | www.lee-associates.com

No warranty or representation has been made to the accuracy of the foregoing information. Terms of sale or lease and availability are subject to change or withdrawal without notice. Lee & Associates Commercial Real Estate Services, Inc. - Riverside.

INDUSTRIAL LAND/CONTRACTOR'S YARD FOR LEASE

23325 Cajalco Rd, Perris, CA 92570



LEE & ASSOCIATES
COMMERCIAL REAL ESTATE SERVICES

CODY MORAN
VICE PRESIDENT
951.276.3624 | DRE#: 02036603
CMORAN@LEERIVERSIDE.COM

3240 Mission Inn Avenue, Riverside, CA 92507 | 951.276.3600 | Corporate DRE#: 01048055 | www.lee-associates.com

No warranty or representation has been made to the accuracy of the foregoing information. Terms of sale or lease and availability are subject to change or withdrawal without notice. Lee & Associates Commercial Real Estate Services, Inc. - Riverside.