

7600 STATE ROAD

Philadelphia, PA 19136



FOR LEASE



INDUSTRIAL



10,000 SF+ 16,000 SF IOS



PROPERTY DESCRIPTION

- Space Available: 10,000 SF
- Office: 400 SF
- Ceiling height: 13.25-15' clear
- Loading: 2 tailgate doors
- Parking/IOS: 16,000 SF lot
- Fully sprinklered
- Gas fired unit heat
- Minutes from I-95, 1.5 mi to Tacony-Palmyra Bridge, 8.5 mi to Center City Philadelphia



FOR MORE INFORMATION

Jeffrey Licht, SIOR

☎ 215.396.2900 x101

✉ bucks@naimertz.com

Jared Licht

☎ 215.396.2900 x105

✉ licht@naimertz.com

NAI MERTZ DISCLAIMER: NO WARRANTY OR REPRESENTATION, EXPRESS OR IMPLIED, IS MADE AS TO THE ACCURACY OF THE INFORMATION CONTAINED HEREIN, AND THE SAME IS SUBMITTED SUBJECT TO ERRORS, OMISSIONS, CHANGE OF PRICE, RENTAL OR OTHER CONDITIONS, PRIOR SALE, LEASE OR FINANCING, OR WITHDRAWAL WITHOUT NOTICE, AND OF ANY SPECIAL LISTING CONDITIONS IMPOSED BY OUR PRINCIPALS. NO WARRANTIES OR REPRESENTATIONS ARE MADE AS TO THE CONDITION OF THE PROPERTY OR ANY HAZARDS CONTAINED THEREIN ARE ANY TO BE IMPLIED. OUTLINES ARE APPROXIMATE AND SHOWN ONLY TO IDENTIFY THE PARCEL IN CONSIDERATION.

NAI Mertz



NAI Mertz | 210 E. Street Road, Suite 3B

Feasterville-Trevose, PA 19053

215-396-2900 | naimertz.com



7600 STATE ROAD

Philadelphia, PA 19136



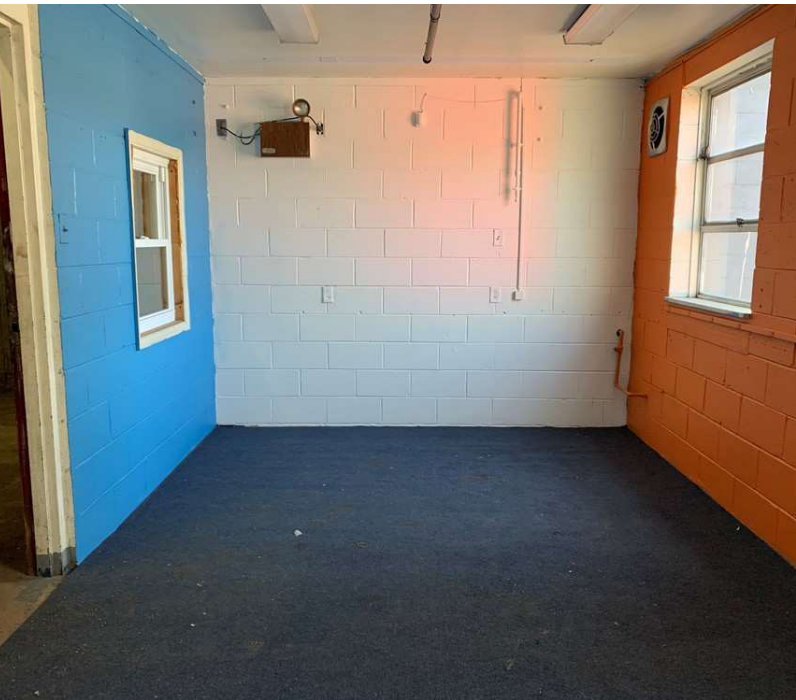
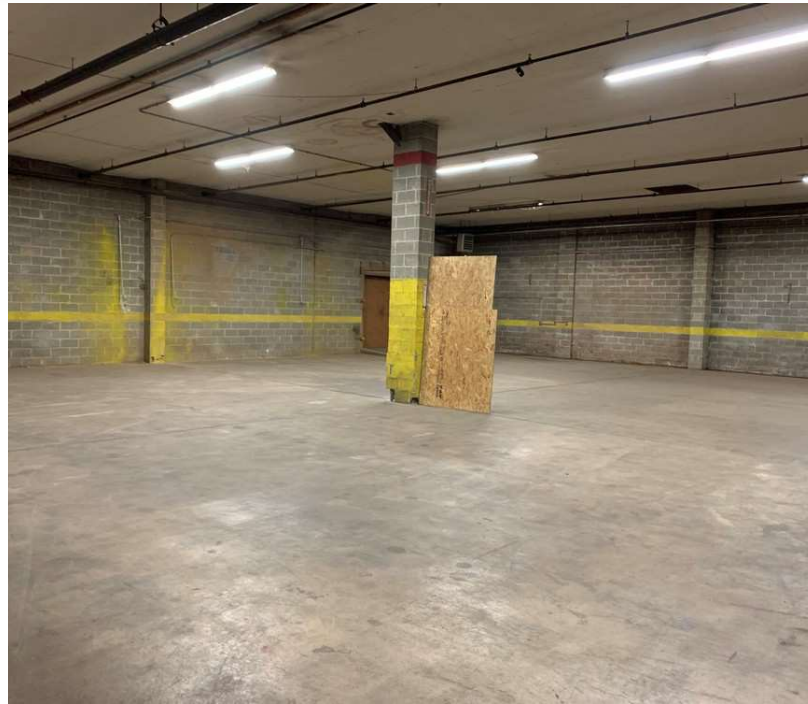
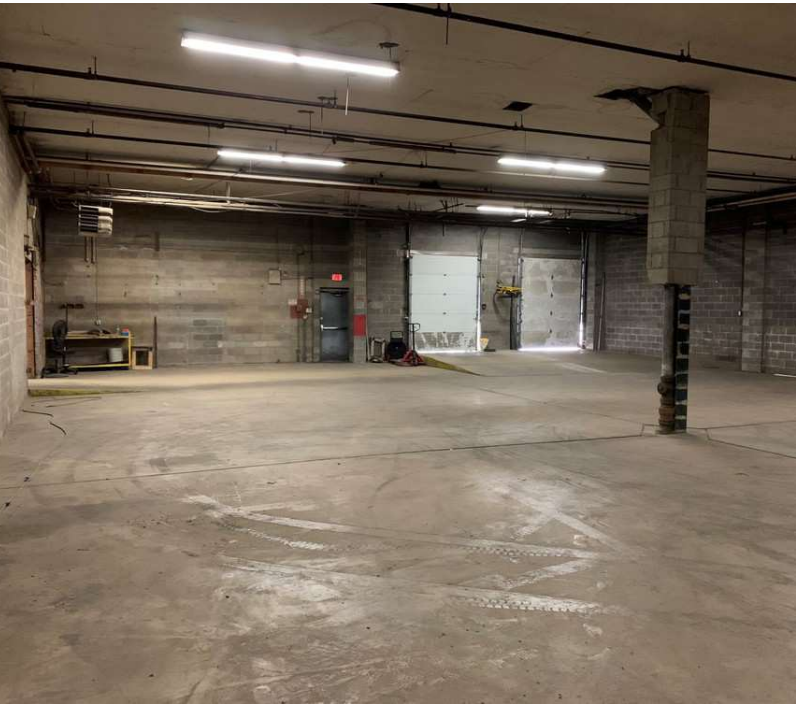
FOR LEASE



INDUSTRIAL



10,000 SF+ 16,000 SF IOS



FOR MORE INFORMATION

Jeffrey Licht, SIOR

☎ 215.396.2900 x101

✉ bucks@naimertz.com

Jared Licht

☎ 215.396.2900 x105

✉ licht@naimertz.com

NAI MERTZ DISCLAIMER: NO WARRANTY OR REPRESENTATION, EXPRESS OR IMPLIED, IS MADE AS TO THE ACCURACY OF THE INFORMATION CONTAINED HEREIN, AND THE SAME IS SUBMITTED SUBJECT TO ERRORS, OMISSIONS, CHANGE OF PRICE, RENTAL OR OTHER CONDITIONS, PRIOR SALE, LEASE OR FINANCING, OR WITHDRAWAL WITHOUT NOTICE, AND OF ANY SPECIAL LISTING CONDITIONS IMPOSED BY OUR PRINCIPALS. NO WARRANTIES OR REPRESENTATIONS ARE MADE AS TO THE CONDITION OF THE PROPERTY OR ANY HAZARDS CONTAINED THEREIN ARE ANY TO BE IMPLIED. OUTLINES ARE APPROXIMATE AND SHOWN ONLY TO IDENTIFY THE PARCEL IN CONSIDERATION.

NAI Mertz



NAI Mertz | 210 E. Street Road, Suite 3B

Feasterville-Trevose, PA 19053

215-396-2900 | naimertz.com



7600 STATE ROAD

Philadelphia, PA 19136



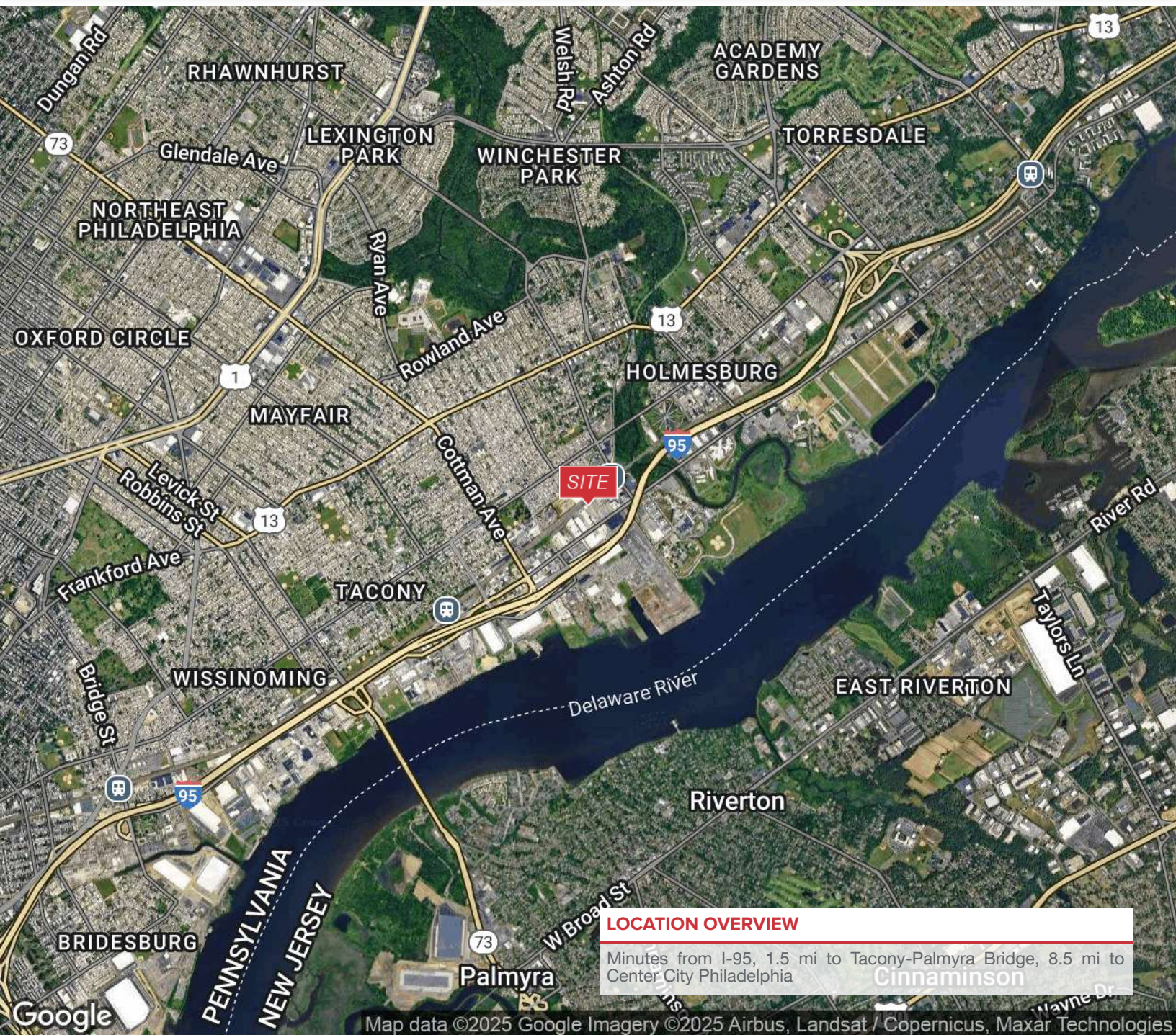
FOR LEASE



INDUSTRIAL



10,000 SF+ 16,000 SF IOS



LOCATION OVERVIEW

Minutes from I-95, 1.5 mi to Tacony-Palmyra Bridge, 8.5 mi to Center City Philadelphia

FOR MORE INFORMATION

Jeffrey Licht, SIOR

☎ 215.396.2900 x101

✉ bucks@naimertz.com

Jared Licht

☎ 215.396.2900 x105

✉ licht@naimertz.com

NAI MERTZ DISCLAIMER: NO WARRANTY OR REPRESENTATION, EXPRESS OR IMPLIED, IS MADE AS TO THE ACCURACY OF THE INFORMATION CONTAINED HEREIN, AND THE SAME IS SUBMITTED SUBJECT TO ERRORS, OMISSIONS, CHANGE OF PRICE, RENTAL OR OTHER CONDITIONS, PRIOR SALE, LEASE OR FINANCING, OR WITHDRAWAL WITHOUT NOTICE, AND OF ANY SPECIAL LISTING CONDITIONS IMPOSED BY OUR PRINCIPALS. NO WARRANTIES OR REPRESENTATIONS ARE MADE AS TO THE CONDITION OF THE PROPERTY OR ANY HAZARDS CONTAINED THEREIN ARE ANY TO BE IMPLIED. OUTLINES ARE APPROXIMATE AND SHOWN ONLY TO IDENTIFY THE PARCEL IN CONSIDERATION.

NAI Mertz



NAI Mertz | 210 E. Street Road, Suite 3B

Feasterville-Trevose, PA 19053

215-396-2900 | naimertz.com

