

FOR LEASE

Eastport Industrial Park  
8901 MARKET STREET  
Houston, Texas 77029

Owned and Operated by  LINK

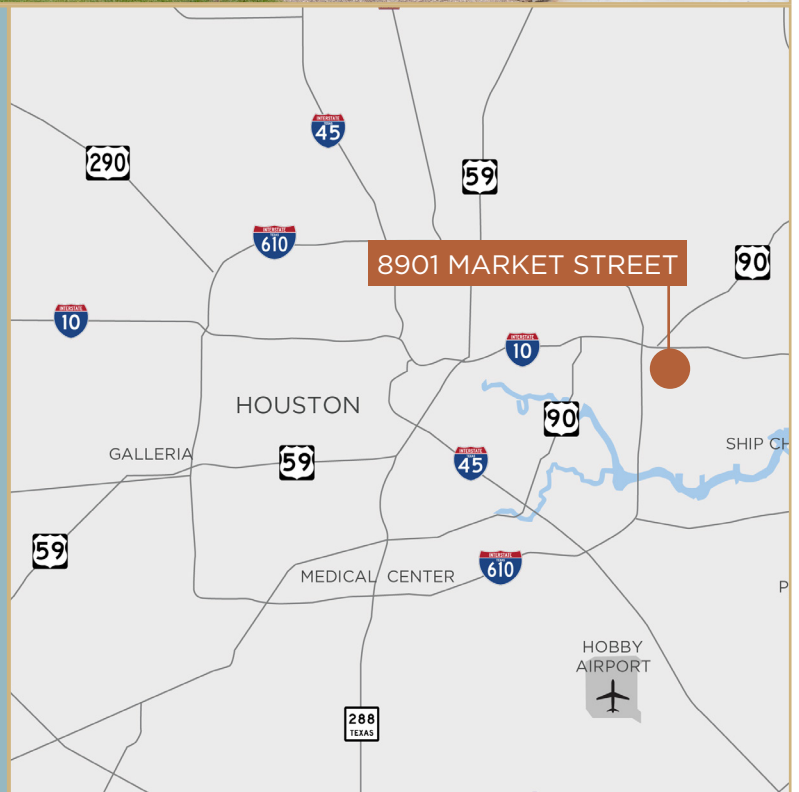
 CUSHMAN & WAKEFIELD

±31,291 SF



## SPACE SPECIFICATIONS

Address:	8901 Market Street, Houston, Texas 77029
Suite Size:	±31,291 SF
Office:	±3,457 SF
Warehouse:	±27,834 SF
Truck Loading:	(2) Oversized 18' high x 25' wide Dock High Loading Doors (1) Drive-In Ramp
Car Parking:	(42) Car Parks
Clear Height:	24'
Sprinkler System:	Wet
Column Spacing:	30' X 31'



## LEASING INFO & CONTACT

JOHN KRUSE | Managing Director | +1 713 304 4919 | john.kruse@cushwake.com

KELLY A. LANDWERMEYER | Managing Director | +1 713 249 4295 | kelly.landwermeier@cushwake.com

1330 POST OAK BOULEVARD | SUITE 2700 | HOUSTON, TX 77056 | PH: +1 713 877 1700 | [cushmanwakefield.com](http://cushmanwakefield.com)

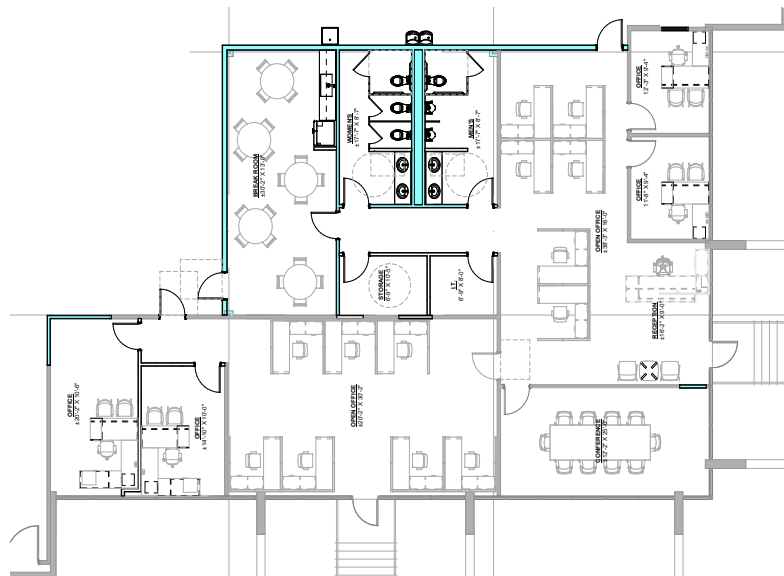
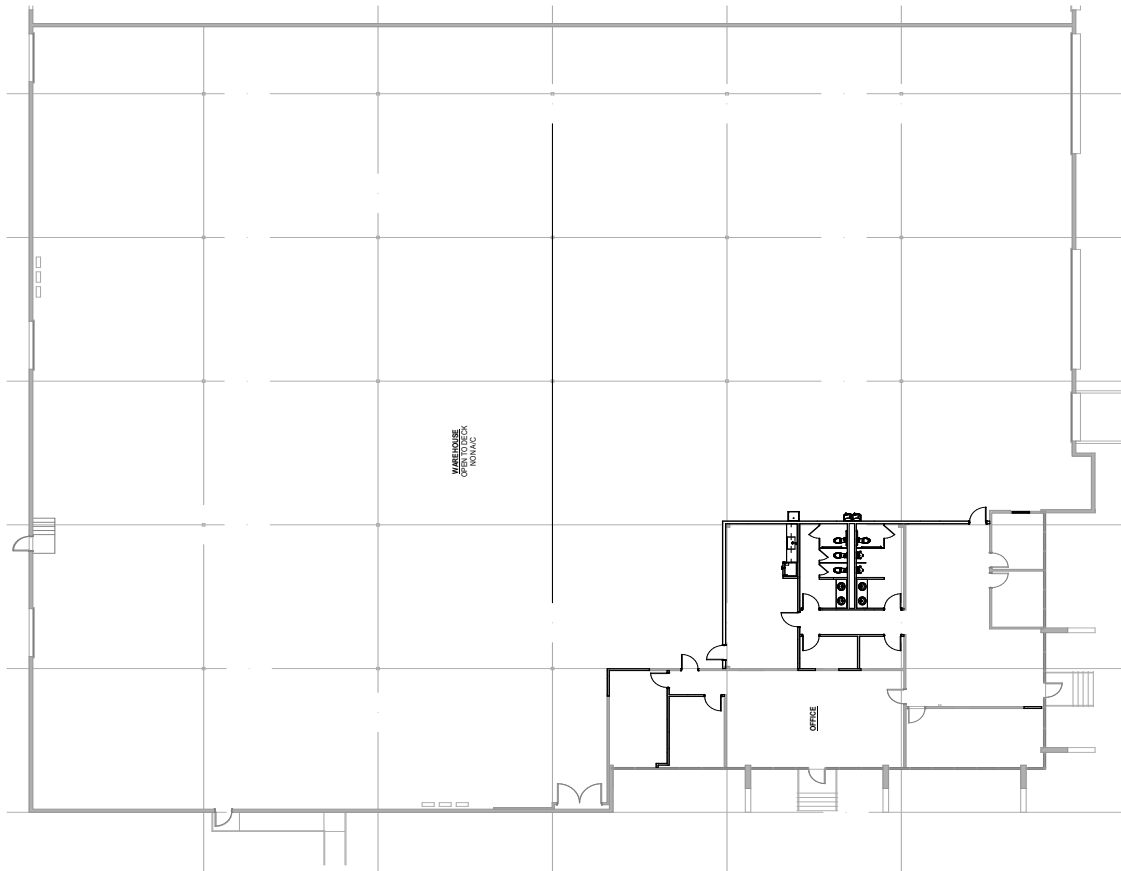
FOR LEASE

Eastport Industrial Park  
8901 MARKET STREET  
Houston, Texas 77029

Owned and Operated by  LINK

 CUSHMAN & WAKEFIELD

## Floor Plan



FOR LEASE

Eastport Industrial Park  
8901 MARKET STREET  
Houston, Texas 77029

Owned and Operated by  LINK

 CUSHMAN &  
WAKEFIELD

Aerial Map



©2023 CUSHMAN & WAKEFIELD. ALL RIGHTS RESERVED. THE INFORMATION CONTAINED IN THIS COMMUNICATION IS STRICTLY CONFIDENTIAL. THIS INFORMATION HAS BEEN OBTAINED FROM SOURCES BELIEVED TO BE RELIABLE BUT HAS NOT BEEN VERIFIED. NO WARRANTY OR REPRESENTATION, EXPRESS OR IMPLIED, IS MADE AS TO THE CONDITION OF THE PROPERTY (OR PROPERTIES) REFERENCED HEREIN OR AS TO THE ACCURACY OR COMPLETENESS OF THE INFORMATION CONTAINED HEREIN, AND SAME IS SUBMITTED SUBJECT TO ERRORS, OMISSIONS, CHANGE OF PRICE, RENTAL OR OTHER CONDITIONS, WITHDRAWAL WITHOUT NOTICE, AND TO ANY SPECIAL LISTING CONDITIONS IMPOSED BY THE PROPERTY OWNER(S). ANY PROJECTIONS, OPINIONS OR ESTIMATES ARE SUBJECT TO UNCERTAINTY AND DO NOT SIGNIFY CURRENT OR FUTURE PROPERTY PERFORMANCE.