

PARKING LEVEL FLOOR PLAN
SCALE: 1/8" = 1'-0"

ROSE & CO., LLC.
ARCHITECTS • CIVIL ENGINEERS
1000 WEST 10TH STREET, SUITE 100, CHICAGO, IL 60605
TEL: 312.467.1000 FAX: 312.467.1001 WWW.ROSEANDCO.COM

NO.	BY	DATE	DESCRIPTION
1	LMF	11-9-20	ISSUE FOR REVIEW
2	LMF	12-10-20	ISSUE FOR REVIEW
3	LMF	5-12-21	REVISED BUILDING
4	LMF	6-21-21	AND SUBMISSION
5	LMF	6-21-21	AND SUBMISSION
6	LMF	9-28-21	UPDATE SITE INFORMATION

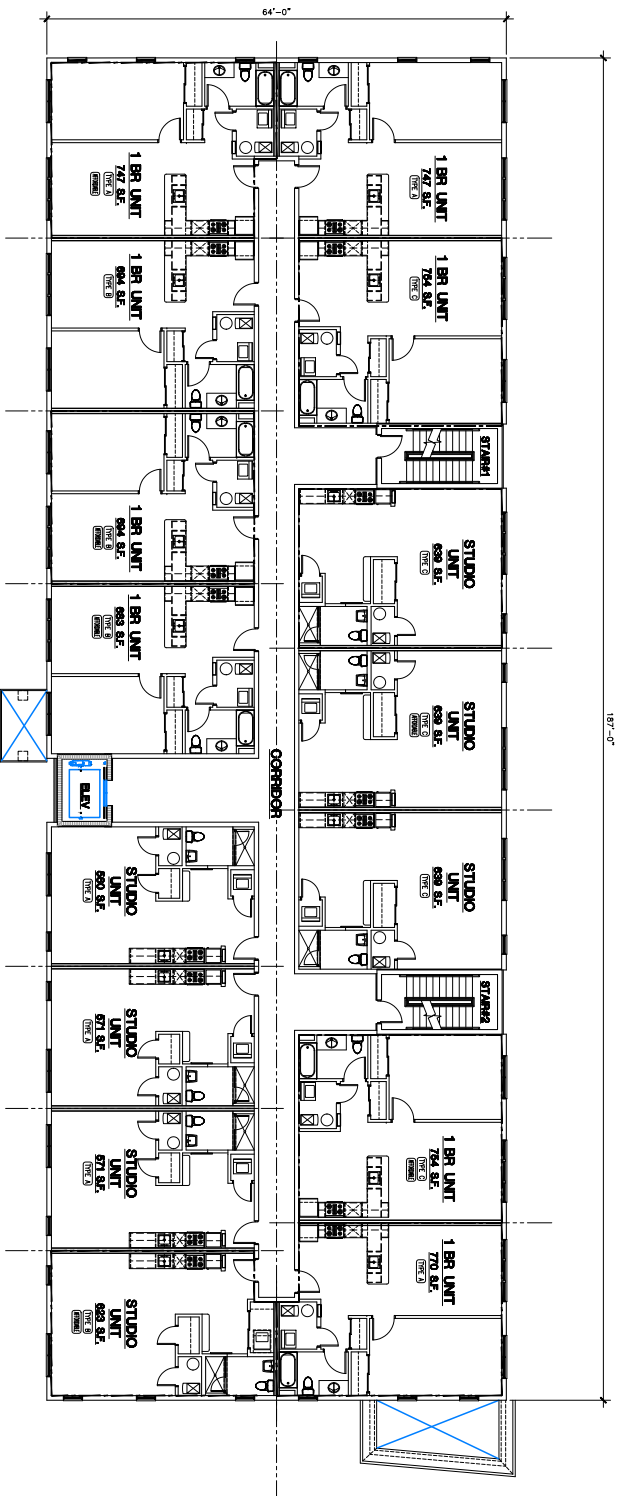
NO.	BY	DATE	DESCRIPTION

PROPOSED
RESIDENTIAL DEVELOPMENT
24 SURF AVENUE APARTMENTS
24 SURF AVENUE
STRATFORD, CT

24 SURF AVENUE, LLC
5841 MAIN STREET
STRATFORD, CT 06614

DESIGNED	SCALE: AS NOTED
BR: LMF	DATE: 11-5-2020
CHECKED	PROJECT NUMBER: 2533
BR: JMS	
DATE: 8/23/21	
BY: R/23/21	
DATE: 8/23/21	

STATE OF CONNECTICUT
REGISTERED PROFESSIONAL ARCHITECT
ROSE & CO., LLC
NO. 10000
A-100



FIRST FLOOR PLAN
SCALE 1/8" = 1'-0"

BUILDING FLOOR AREAS

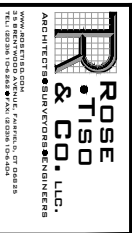
Areas

Parking Level = 1,061 SF
 First Floor = 12,186 SF
 Second Floor = 12,186 SF
 Third Floor = 12,186 SF

Total = 40,802 SF

APARTMENT DISTRIBUTION

FLOOR	0 BR	1 BR	2 BR	3 BR	TOTALS
FIRST FLOOR	7	8	0	0	15
SECOND FLOOR	7	8	0	0	15
THIRD FLOOR	7	8	0	0	15
TOTALS	21	24	0	0	45



ROSE & CO., LLC. ARCHITECTS & CIVIL ENGINEERS
 100 WEST MAIN STREET, SUITE 200
 STRATFORD, CT 06424
 TEL: 860.261.1000 FAX: 860.261.1001
 WWW.ROSEANDCO.COM

REVISIONS

NO.	BY	DATE	DESCRIPTION
1	LMF	11-9-20	ISSUE FOR REVIEW
2	LMF	12-10-20	ISSUE FOR REVIEW
3	LMF	5-12-21	REVISED BUILDING AND SUBMISSION
4	LMF	6-21-21	REVISED PER AHS
5	LMF	9-7-21	REVISED PER AHS

PROJECT TITLE

PROPOSED
 RESIDENTIAL DEVELOPMENT
 SURF AVENUE APARTMENTS
 24 SURF AVENUE
 STRATFORD, CT

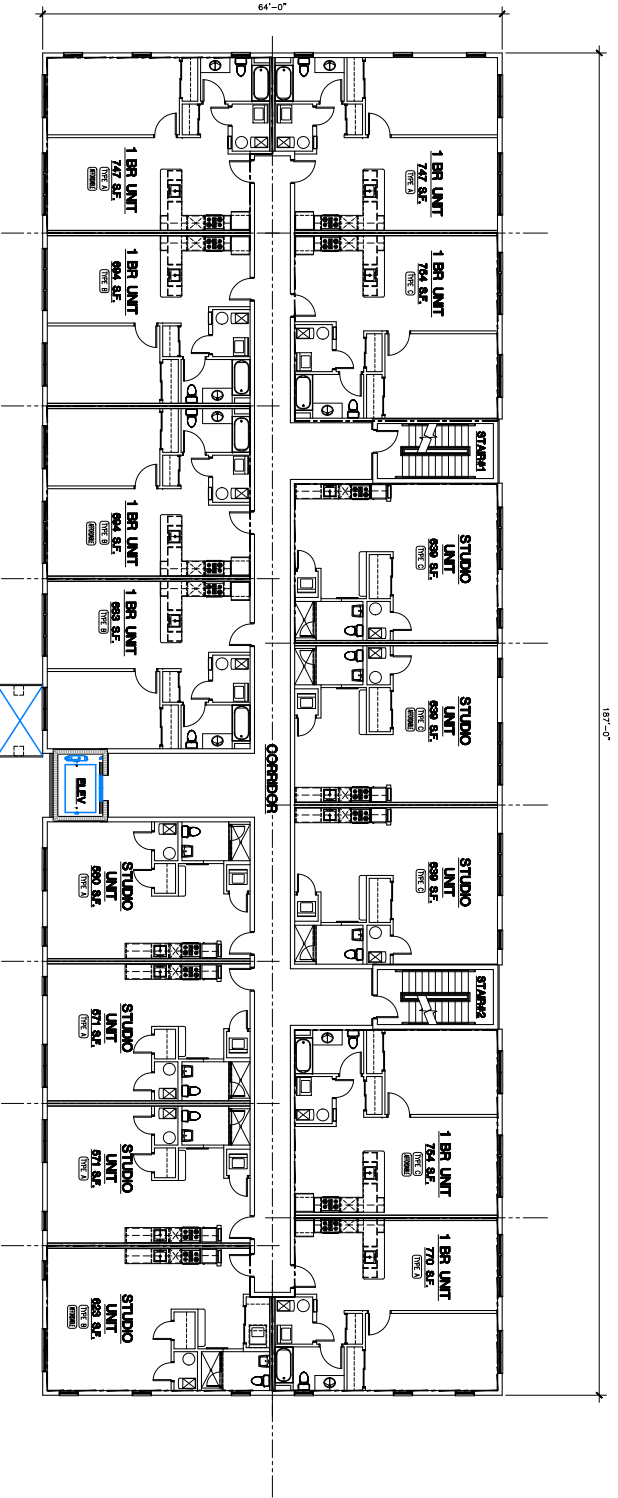
SHEET TITLE

FIRST FLOOR PLAN

DESIGNED BY: [Blank]
 SCALE: AS NOTED
 DRAWN BY: [Blank]
 BR: LMF
 DATE: 11-9-2020
 CHECKED BY: [Blank]
 BR: PMS
 PROJECT NUMBER: 2533
 FILE: R/2533/V001

24 SURF AVENUE, LLC
 8841 MAIN STREET
 STRATFORD, CT 06414

A-101



SECOND FLOOR PLAN
SCALE 1/8" = 1'-0"

ROSE & CO., L.L.C.
ARCHITECTS • CIVIL ENGINEERS
24 SURF AVENUE, SUITE 200, STRATFORD, CT 06614
TEL: 860.263.1100 • FAX: 860.263.1101 • WWW.ROSEANDCO.COM

NO.	REV.	DATE	DESCRIPTION
1	1	11-9-20	ISSUE FOR REVIEW
2	1	12-10-20	ISSUE FOR REVIEW
3	1	5-12-21	REVISED BUILDING AND SUBMISSION
4	1	6-21-21	REVISED PER AHS
5	1	9-7-21	REVISED PER AHS

NO.	REV.	DATE	DESCRIPTION

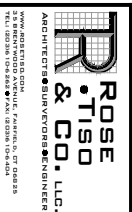
PROPOSED RESIDENTIAL DEVELOPMENT
24 SURF AVENUE APARTMENTS
24 SURF AVENUE
STRATFORD, CT

24 SURF AVENUE, LLC
3841 MAIN STREET
STRATFORD, CT 06614

DESIGNED BY	SCALE AS NOTED
BR: JWF <td>DATE: 11-9-2020</td>	DATE: 11-9-2020
CHECKED BY: JWF <td>PROJECT NUMBER: 2533</td>	PROJECT NUMBER: 2533
DATE: 6/23/21 <td>SCALE: AS NOTED</td>	SCALE: AS NOTED
FILE: R/2533/ARCH	

STATE OF CONNECTICUT
REGISTERED PROFESSIONAL ARCHITECT
No. 10200
JAMES W. FLETCHER

A-102



ROSE AND COMPANY IS AN EQUAL OPPORTUNITY AFFIRMATIVE ACTION EMPLOYER.
 STATE OF CONNECTICUT REGISTRATION NO. 16638
 REGISTERED PROFESSIONAL ARCHITECTS AND ENGINEERS

NO.	DATE	REVISIONS	DESCRIPTION
1	11-9-20		ISSUE FOR REVIEW
2	12-10-20		ISSUE FOR REVIEW
3	5-12-21		REVISED BUILDING AND SUBMISSION
4	6-21-21		REVISED PER AHS
5	9-7-21		REVISED PER AHS

NO.	DATE	REVISIONS	DESCRIPTION
1	11-9-20		ISSUE FOR REVIEW
2	12-10-20		ISSUE FOR REVIEW
3	5-12-21		REVISED BUILDING AND SUBMISSION
4	6-21-21		REVISED PER AHS
5	9-7-21		REVISED PER AHS

PROJECT TITLE

**PROPOSED
 RESIDENTIAL DEVELOPMENT
 SURF AVENUE APARTMENTS
 24 SURF AVENUE
 STRATFORD, CT**

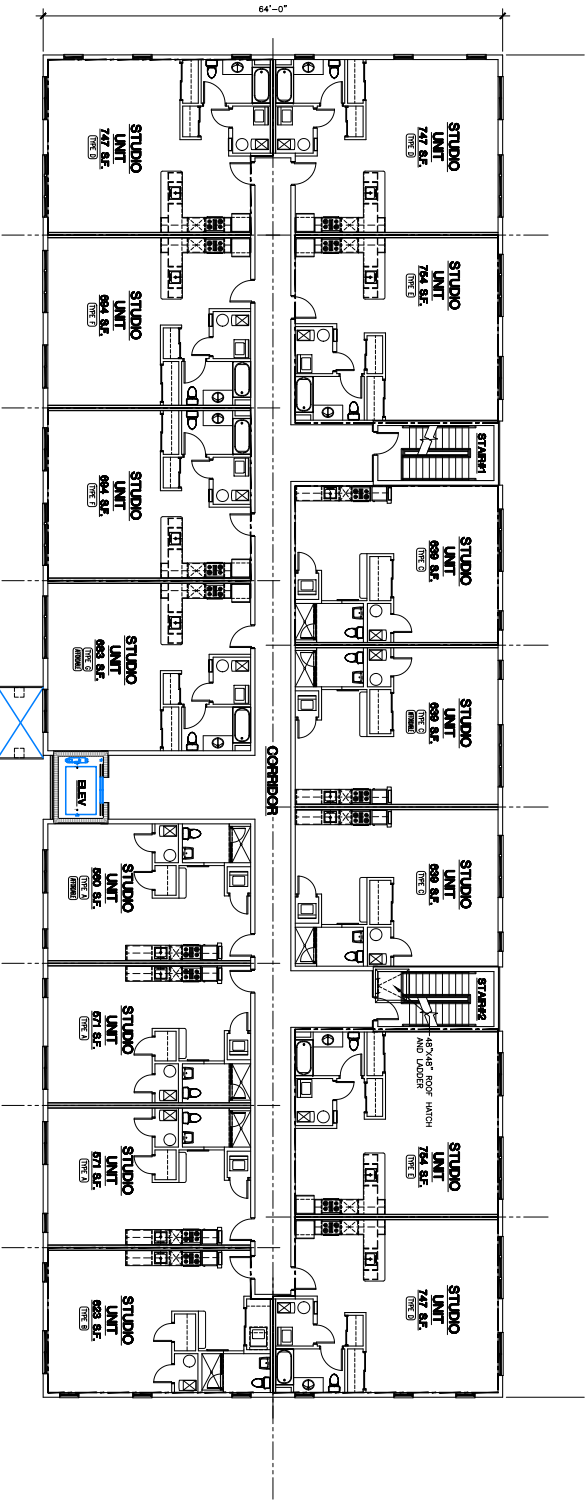
**24 SURF AVENUE, LLC
 3841 MAIN STREET
 STRATFORD, CT 06614**

SHEET TITLE
THIRD FLOOR PLAN

DESIGNED	SCALE: AS NOTED
DRAWN	
CHKD BY	DATE: 11-4-2020
PROJECT NUMBER: 2533	
NO. F./T.S.V./M.C.H.	

STATE OF CONNECTICUT ARCHITECTS REGISTRATION NO. 16638 REGISTERED PROFESSIONAL ARCHITECTS AND ENGINEERS

SHEET NUMBER
A-103



THIRD FLOOR PLAN
 SCALE: 1/8" = 1'-0"

NO.	BY	DATE	REVISIONS
1	LMF	11-9-20	ISSUE FOR REVIEW
2	LMF	12-10-20	ISSUE FOR REVIEW
3	LMF	5-12-21	REVISED BUILDING
4	LMF	6-21-21	AND SUBMISSION
5	LMF	9-7-21	REVISED PER AHS

NO.	BY	DATE	DESCRIPTION
1	LMF	11-9-20	ISSUE FOR REVIEW
2	LMF	12-10-20	ISSUE FOR REVIEW
3	LMF	5-12-21	REVISED BUILDING
4	LMF	6-21-21	AND SUBMISSION
5	LMF	9-7-21	REVISED PER AHS

PROPOSED
RESIDENTIAL DEVELOPMENT
SURF AVENUE APARTMENTS
 24 SURF AVENUE
 STRATFORD, CT

24 SURF AVENUE, LLC
 8841 MAIN STREET
 STRATFORD, CT 06414

DESIGNED BY: LMF	SCALE: AS NOTED
CHECKED BY: JMS	DATE: 11-9-2020
PROJECT NUMBER: 2533	
FILE NO: R/2533/ARCH	

SHEET TITLE
ROOF PLAN

DESIGNED BY: LMF
 CHECKED BY: JMS
 PROJECT NUMBER: 2533
 FILE NO: R/2533/ARCH

SCALE: AS NOTED
 DATE: 11-9-2020

ROSE & CO., LLC.
 ARCHITECTS • CIVIL ENGINEERS

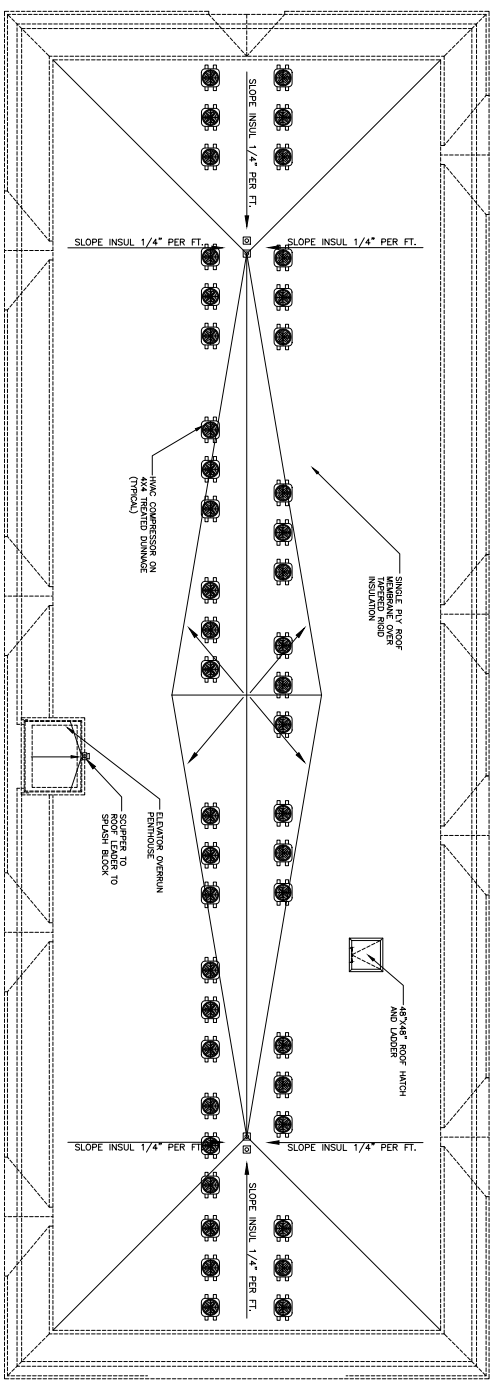
24 SURF AVENUE, LLC
 8841 MAIN STREET
 STRATFORD, CT 06414

PROPOSED
 RESIDENTIAL DEVELOPMENT
 SURF AVENUE APARTMENTS
 24 SURF AVENUE
 STRATFORD, CT

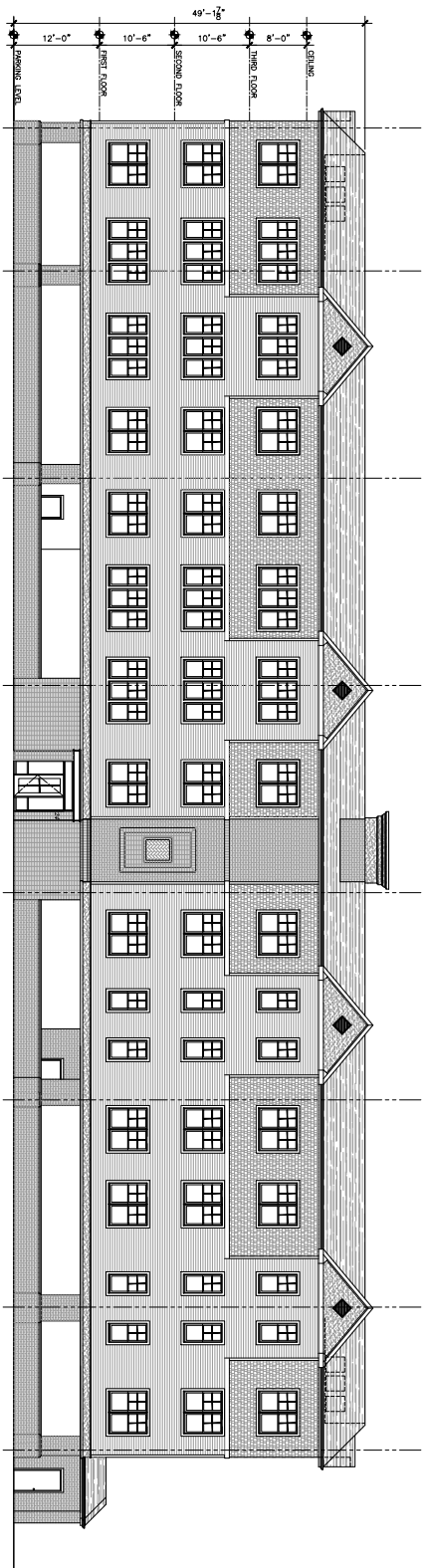
REVISIONS

NO.	BY	DATE	DESCRIPTION
1	LMF	11-9-20	ISSUE FOR REVIEW
2	LMF	12-10-20	ISSUE FOR REVIEW
3	LMF	5-12-21	REVISED BUILDING
4	LMF	6-21-21	AND SUBMISSION
5	LMF	9-7-21	REVISED PER AHS

SHEET NUMBER
A-104



ROOF PLAN
 SCALE: 1/8" = 1'-0"



FRONT ELEVATION - SURF AVENUE

EXTERIOR FINISH KEY

- EF1 EFS FINISH
DRYVIT COLOR: MOONLIGHT #612
- EF2 EXTERIOR FIBER CEMENT SIDING
HARDPLANK U/P SIDING 4" EXPOSURE CEDAR/MILL
COLOR: COBBLESTONE
- EF3 HARD SHINGLE SIDING STAGGERED
EDGE PANEL - 6" EXPOSURE
COLOR: MONTREY TAUPE
- EF4 HARDPLANK TRIM BOARDS
COLOR: WHITE
- EF5 EFS FINISH
DRYVIT COLOR: SUPERWHITE 101
- EF6 THIN BRICK VENEER - ENDICOTT BRICK
COLOR: ROSE BLEND
- EF7 FIBERGLASS SHINGLE ROOF
COLOR: WEATHERED WOOD
- EF8 VINYL WINDOWS 4/1 LIGHTS
COLOR: WHITE



ELEVATION DETAIL
SCALE 1/4" = 1'-0"

ROSE & TISO & CO., LLC.
ARCHITECTS • SURF AVENUE • NEW HAVEN, CT 06511
WWW.ROSEANDTISO.COM
PHOTO COURTESY OF ROSE & TISO & CO., LLC.

NO.	REV.	DATE	DESCRIPTION
1	1	11-9-20	ISSUE FOR REVIEW
2	1	12-10-20	ISSUE FOR REVIEW
3	1	5-12-21	REVISED BUILDING
4	1	6-21-21	AND SUBMISSION
5	1	9-7-21	REVISED PER AHS

NO.	REV.	DATE	DESCRIPTION

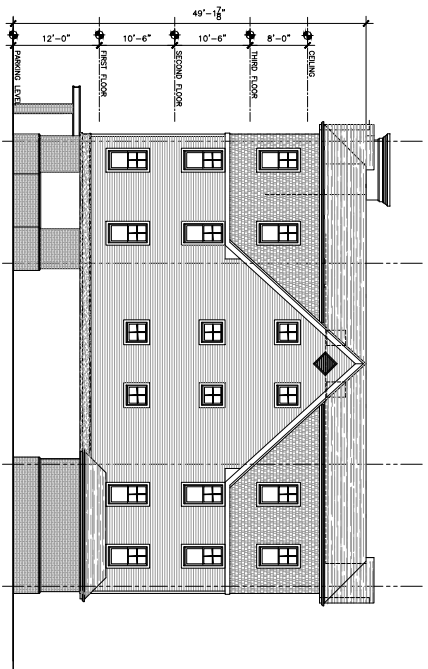
PROJECT TITLE
**PROPOSED
RESIDENTIAL DEVELOPMENT
SURF AVENUE APARTMENTS
24 SURF AVENUE
STRATFORD, CT**

24 SURF AVENUE, LLC
2841 MAIN STREET
STRATFORD, CT 06614

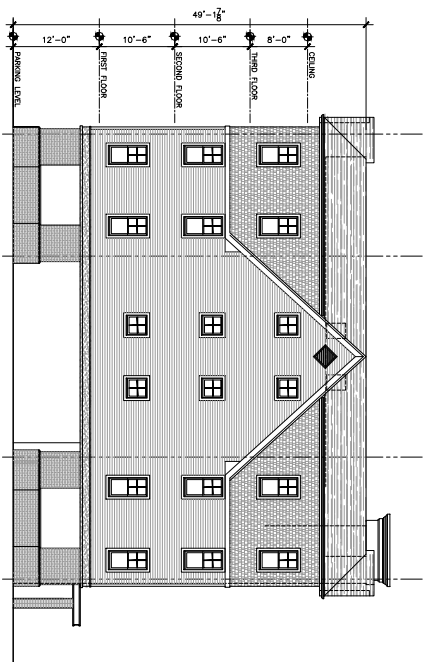
SHEET TITLE
EXTERIOR ELEVATIONS

DESIGNED BY: [NAME]	SCALE: AS NOTED
CHECKED BY: [NAME]	DATE: 11-9-2020
PROJECT NUMBER: 2533	
DATE R./2533/ARCH	

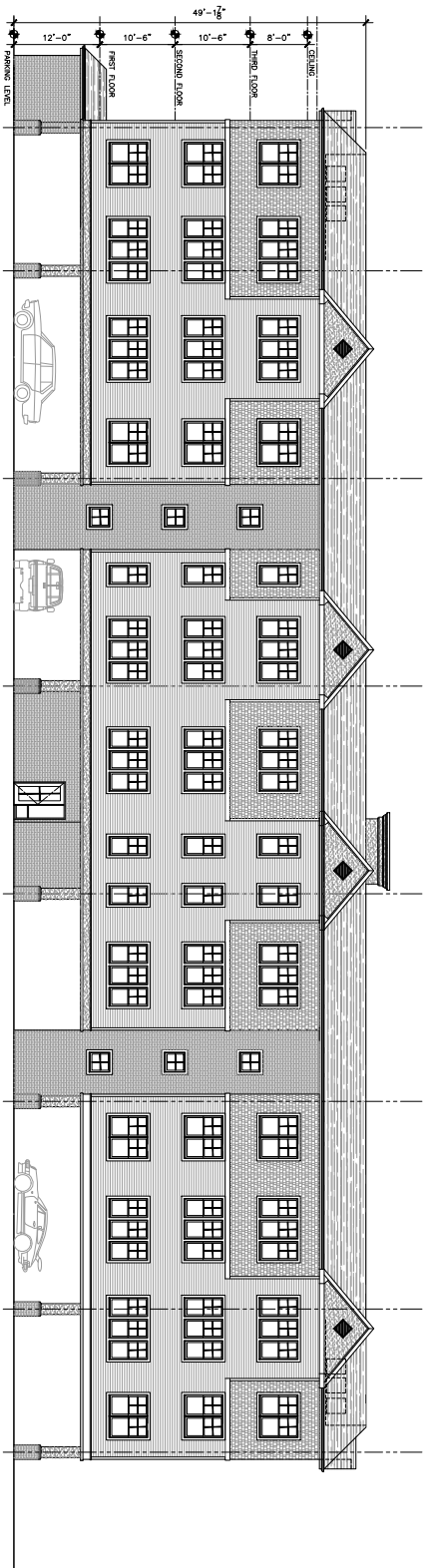
SEAL SHEET NUMBER
A-201



RIGHT SIDE ELEVATION



LEFT SIDE ELEVATION - AVON STREET



REAR ELEVATION

ROSE & TISO & CO., LLC.
 ARCHITECTS • CIVIL ENGINEERS
 100 WASHINGTON STREET, SUITE 200, STRATFORD, CT 06460
 TEL: 860.263.1000 FAX: 860.263.1001

NO.	REV.	DATE	DESCRIPTION
1	1	11-9-20	ISSUE FOR REVIEW
2	1	12-10-20	ISSUE FOR REVIEW
3	1	5-12-21	REVISED BUILDING AND SUBMISSION
4	1	6-21-21	REVISED PER AHS
5	1	9-7-21	REVISED PER AHS

PROJECT TITLE
PROPOSED RESIDENTIAL DEVELOPMENT
SURF AVENUE APARTMENTS
 24 SURF AVENUE
 STRATFORD, CT

24 SURF AVENUE, LLC
 5841 MAIN STREET
 STRATFORD, CT 06414

SHEET TITLE
EXTERIOR ELEVATIONS

DESIGNED BY RWT	SCALE AS NOTED
CHECKED BY RWT	DATE: 11-5-2020
PROJECT NUMBER: 2533	
FILE NO.: R/2533/ARCH	

SEAL SHEET NUMBER
A-202