

# 28 West 27th Street, New York, NY 10001 (Unit#502)

Between Fifth and Sixth Avenue | NoMad



**Approximate Size:** Unit #502 (1,400 SF)

**Asking Rent:** \$39 PSF

**Site status:** Move in Condition, white box

**Possession:** IMD

**Term:** 1-10 year, plus option

**Frontage:** 59 feet

**Ceiling Height:** 11 feet

**Neighbors:**

Madison Square Park, Korean Town, Penn Station, Virgin Hotel, Empire State Building, Herald Square, CVS, Fashion Institute

**Comments:**

Private Office For Rent; High Ceiling; Quality Hardwood Floor Large Windows With Great Light

\*Location Close to AI

\*24/

\*Imd Occupancy

**Remarks:**

Ideal for Tech, Media, PR, Advertising

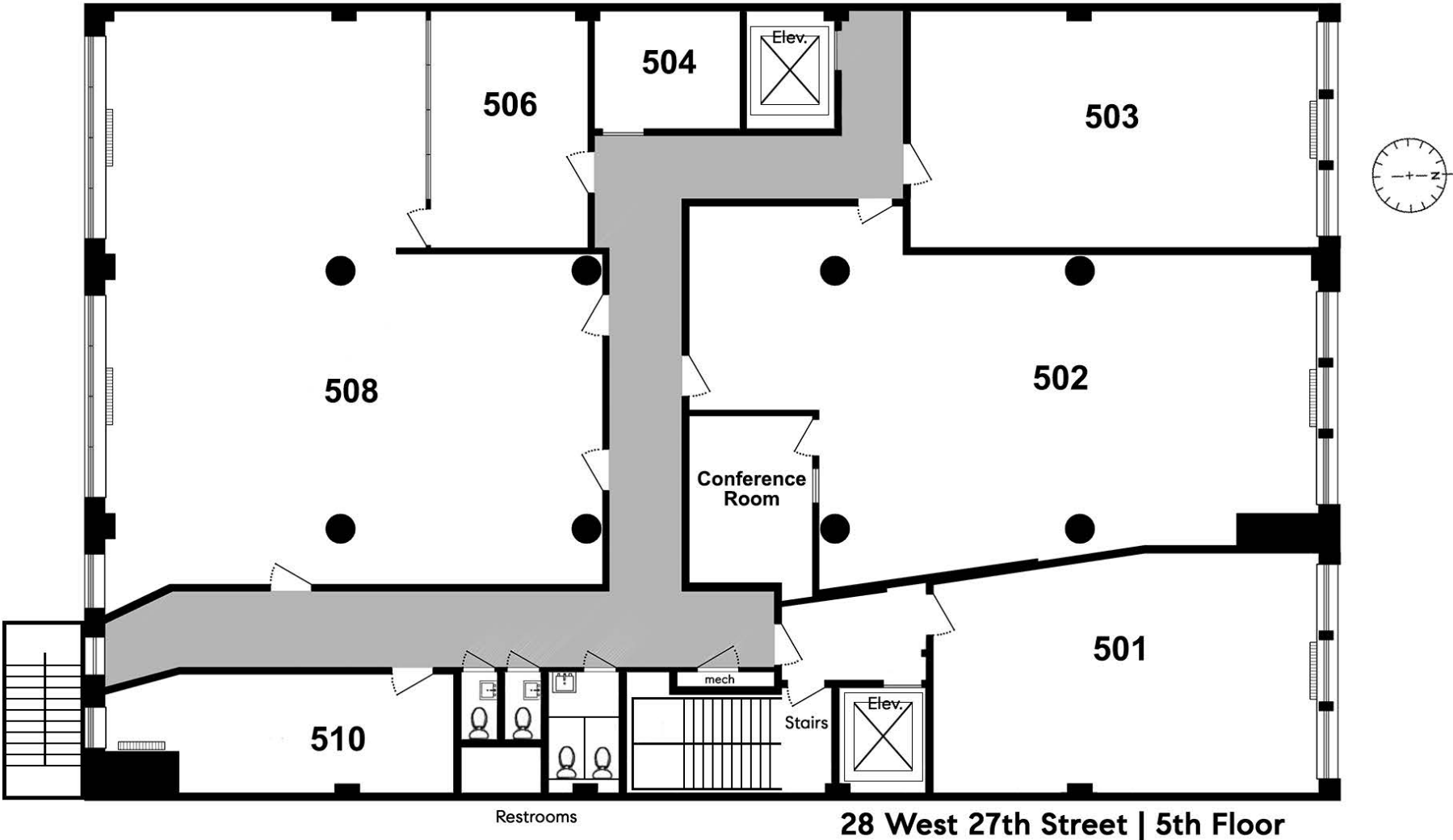
All units can be combined or divided

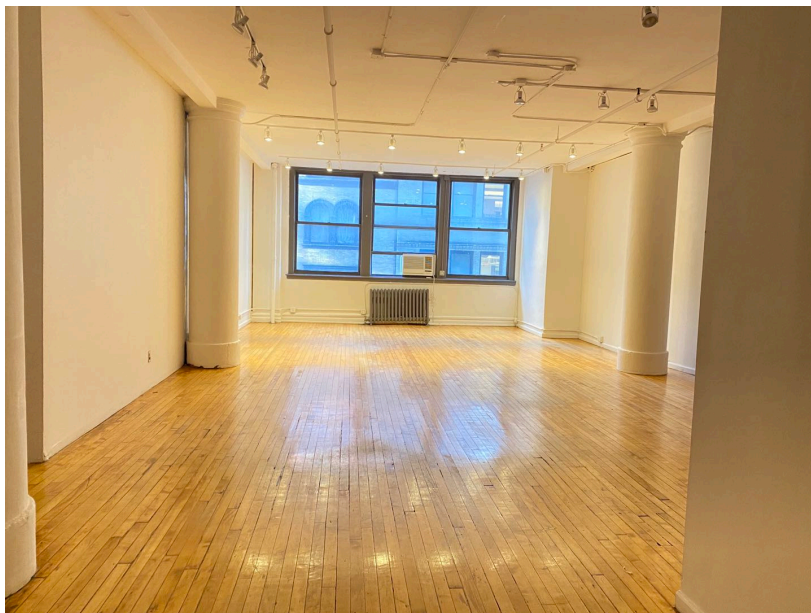
Call for inquiry

**Transportation:**

Subway, MTA, Riders paradise

# Floor Plan



**Unit 5 0 2**





**Building image**

**NoMad**  
 (Between Lexington and 6th Avenues,  
 North of 25th Street and South of 30th Street)

