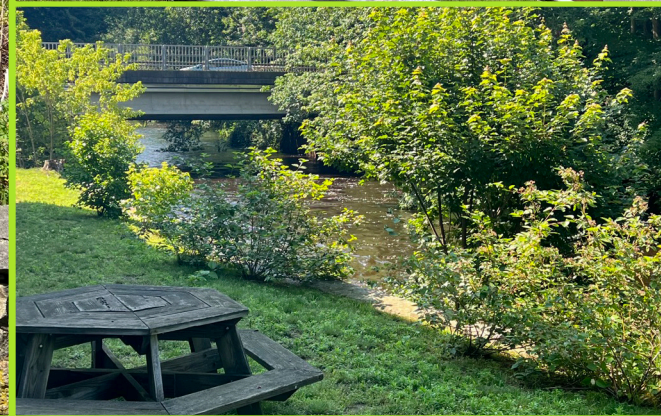


FOR LEASE

CONCORD OFFICE SPACE

BRICK AND BEAM



12 DAMONMILL SQUARE

Property Highlights:

- Beautiful, brick and beam, corner office suite on the 2nd floor (Suite 2N)
- 1,575 RSF consisting of 7 offices with oversized windows, conference room, and kitchenette
- \$2,900 per month, plus utilities
- Situated along the Assabet River
- Elevator access
- Common restrooms on floor
- Professionally managed
- Electric & internet - Concord Municipal Light
- 17 reserved parking spaces for the building. Abundance of overflow parking on site.
- Minutes from West Concord Village amenities including shopping, dining, and the Commuter Rail.

Contact:
Tyler Spring

617.834.8602

Tspring@omniproperties.com

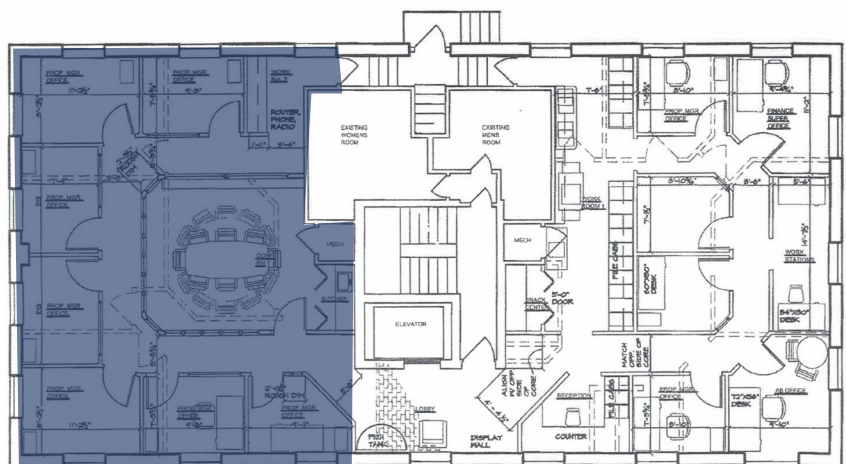
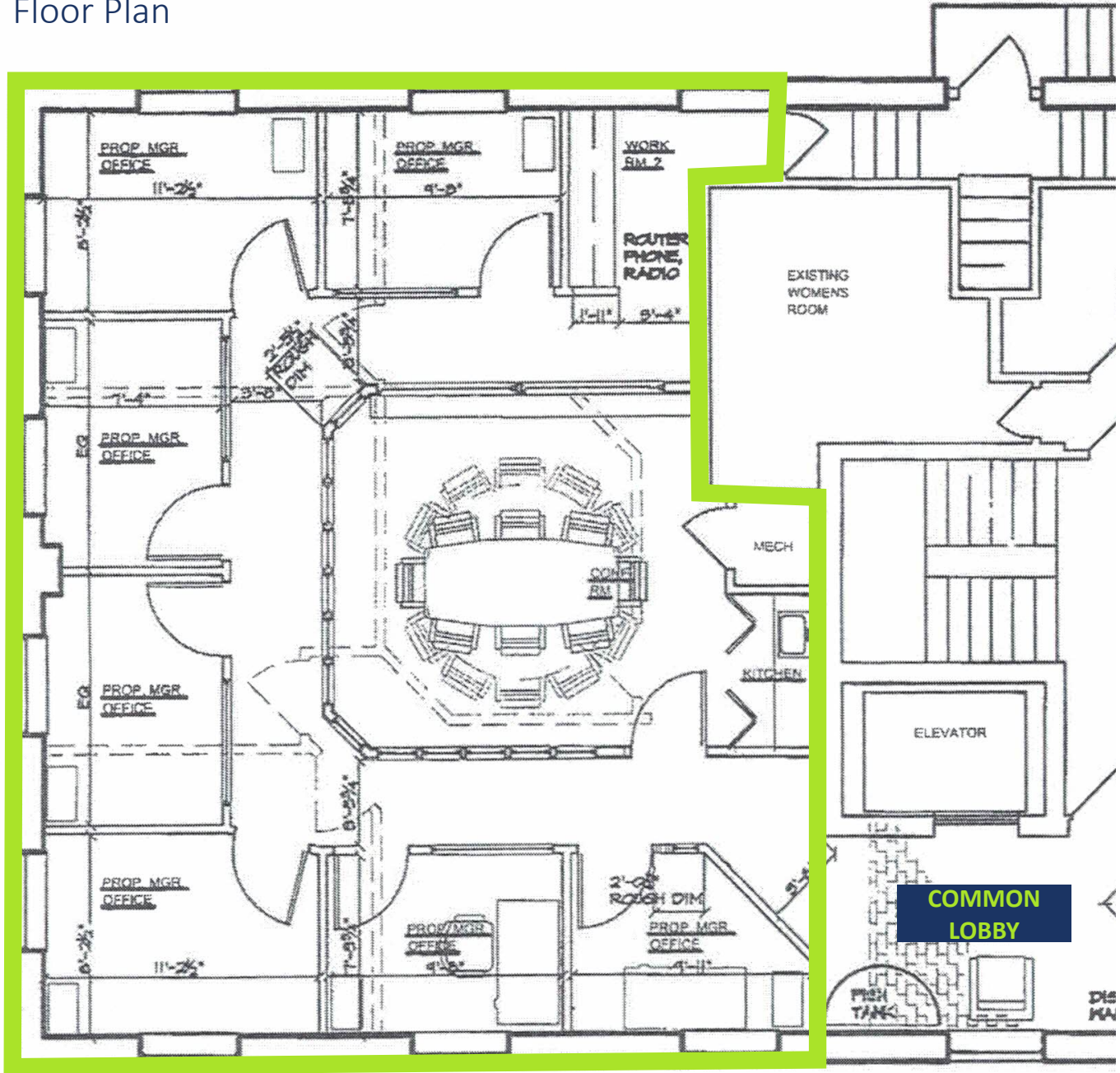


OMNI PROPERTIES

6 Liberty Way, Westford MA 01886

12 Damonmill Square Concord, MA

Floor Plan





12 Damonmill Square Concord MA

Location Overview



Countless Nearby Amenities!

12 DamonMill
0.9 Miles ----->

- Nashoba Brook Bakery
- United States Postal Service
- Woods Hill Table
- Twin Seafood
- Concord teacakes
- 7-Eleven
- The Barber Shop
- Debra's Gourmet
- The CLUB CAR Cafe
- West Concord Liquors
- DUNKIN' DONUTS
- West Village American Tavern
- Walden Italian Kitchen
- Pure Barre
- CONCORD CHILDREN'S CENTER
- CONCORD SHOE REPAIR
- Walden Italian Kitchen
- MBTA Commuter Rail
- Wag & Wash Pet Store
- West Concord Library
- West Concord Pharmacy
- Mexican Cantina
- Orangetheory
- Mass General Brigham