



**FOR LEASE**

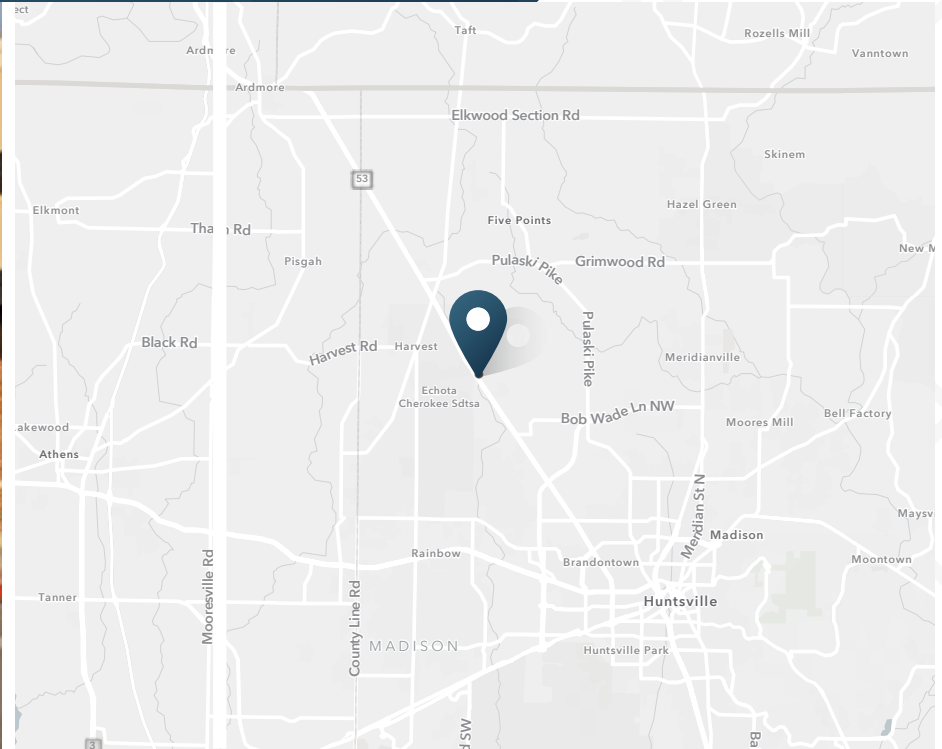
# Harvest Square

5850 Highway 53 | Harvest, AL



# Harvest Square

5850 Highway 53 | Harvest, AL 35749



**FOR LEASE**

1,400 SF  
Available

## MANAGED BY



**INLAND COMMERCIAL  
REAL ESTATE SERVICES LLC**

## ABOUT THE PROPERTY

- 70,590 SF Publix-anchored center with complimentary tenant mix
- Conveniently located on Highway 53 in Harvest, AL with 16,931 VPD
- Positive growth and strong demographics

## CONTACT

**Martin Smith, CCIM**  
205.776.6151 | martin.smith@srsre.com

**Cooper Smith**  
205.558.6161 | cooper.smith@srsre.com

## TENANTS INCLUDE

**Publix** Great Clips®

**PAPAJOHNS®**



**SUBWAY**

## TRAFFIC COUNTS

AL-53, N of Site

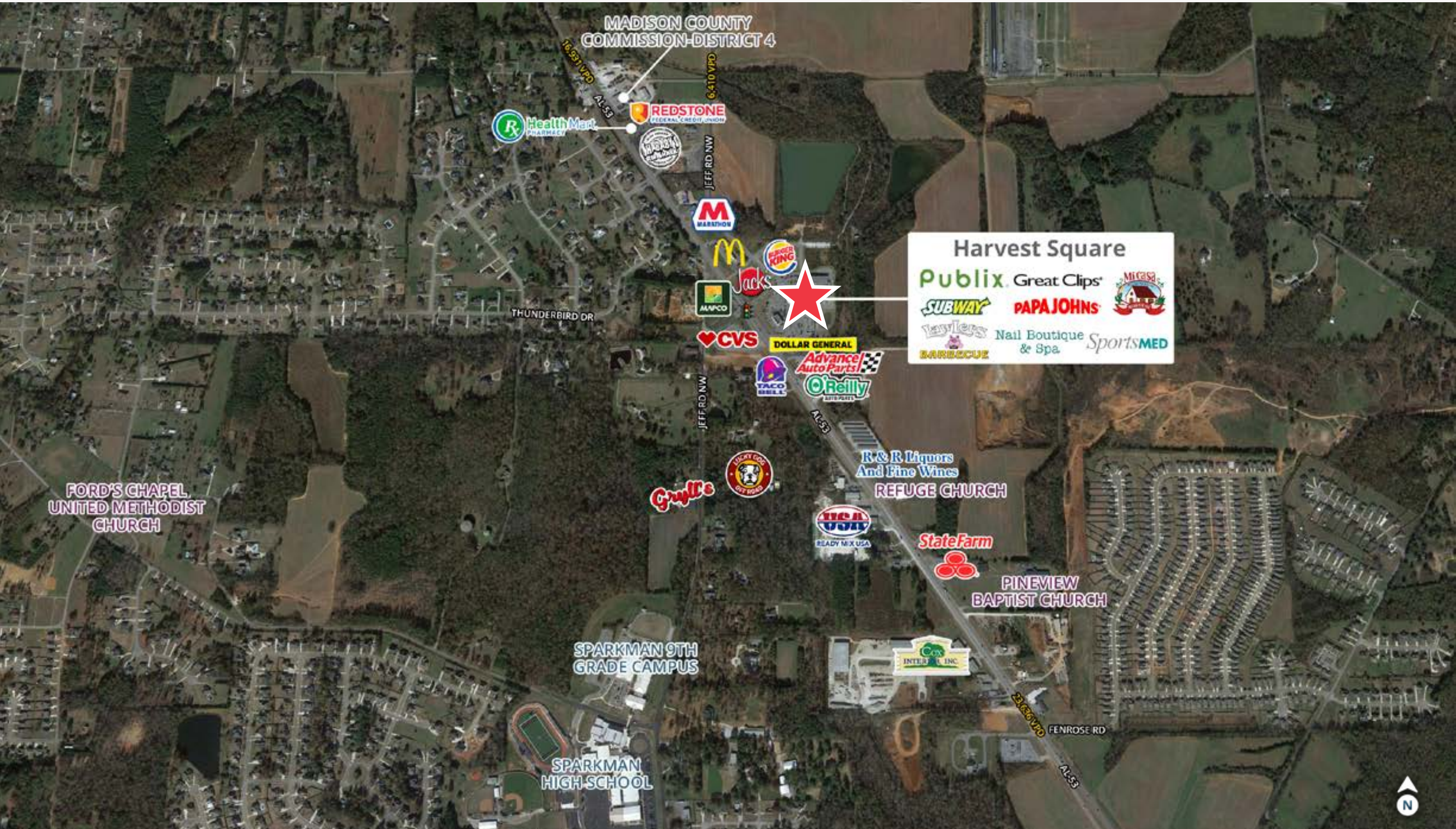
AL-53, S of Site

Year: 2022 | Source: ALDOT

16,931 VPD

23,636 VPD





**Harvest Square**

Publix. Great Clips. MEGA

SUBWAY. PAPA JOHN'S

Nail Boutique & Spa. SportsMED

BARBECUE

FORD'S CHAPEL  
UNITED METHODIST  
CHURCH

SPARKMAN 9TH  
GRADE CAMPUS

SPARKMAN  
HIGH SCHOOL

PINEVIEW  
BAPTIST CHURCH

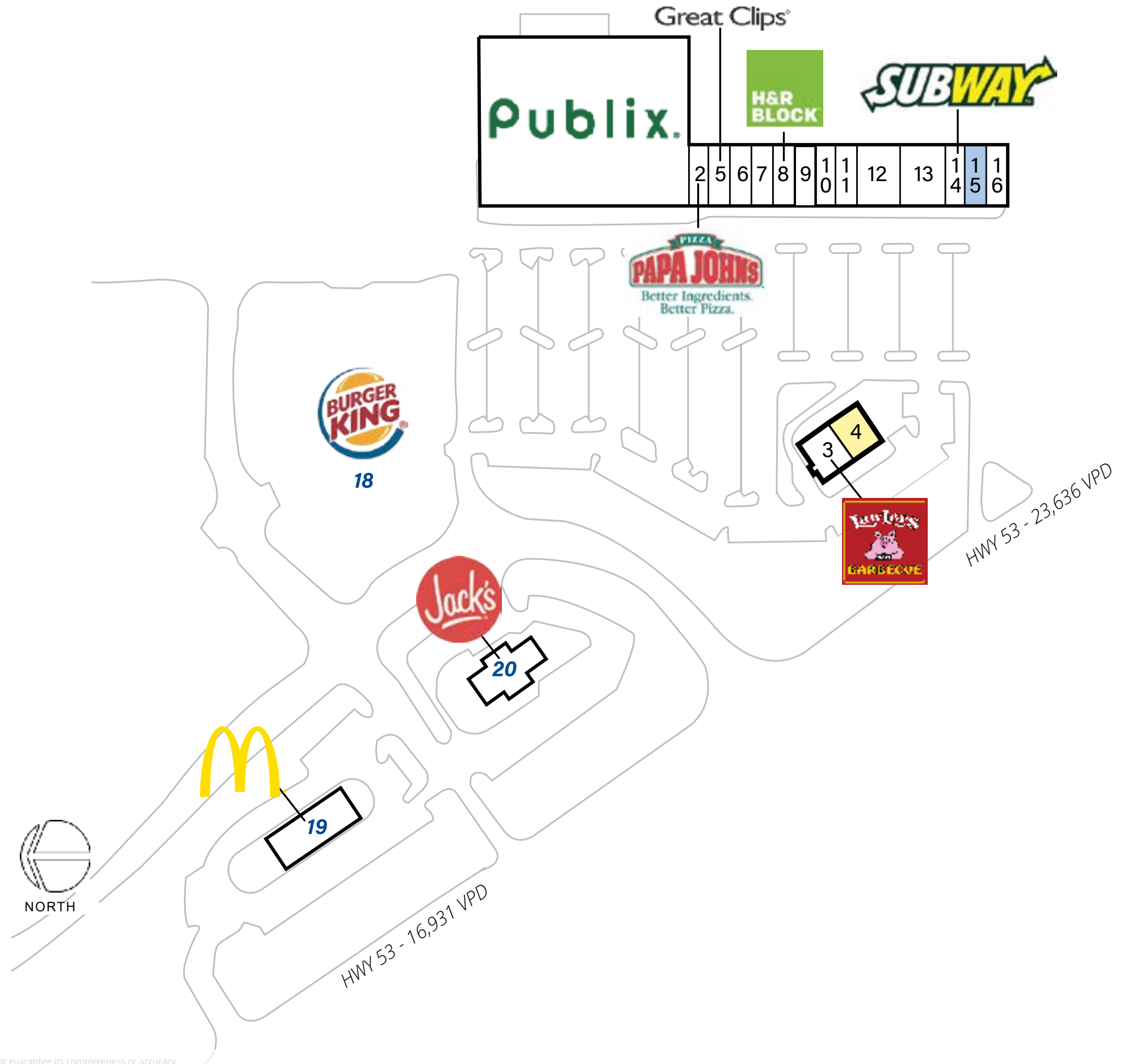
REFUGE CHURCH

MADISON COUNTY  
COMMISSION-DISTRICT 4



## TENANT ROSTER

| UNIT | TENANT                           | SF        |
|------|----------------------------------|-----------|
| 1    | Publix                           | 45,600 SF |
| 2    | Papa John's Pizza                | 1,390 SF  |
| 3    | LawLers Barbeque                 | 2,000 SF  |
| 4    | AT LOI                           | 2,000 SF  |
| 5    | Great Clips                      | 1,400 SF  |
| 6    | Nail Boutique                    | 1,400 SF  |
| 7    | Alabama Spirits                  | 1,400 SF  |
| 8    | H&R Block                        | 1,400 SF  |
| 9    | LifeSouth Community Blood Center | 1,400 SF  |
| 10   | China Cafe                       | 1,400 SF  |
| 11   | HealthSource of Harvest          | 1,400 SF  |
| 12   | Sports Med                       | 2,800 SF  |
| 13   | Mi Casa Mexican Restaurant       | 2,800 SF  |
| 14   | Subway                           | 1,400 SF  |
| 15   | AVAILABLE                        | 1,400 SF  |
| 16   | Songs Cleaners & Alterations     | 1,400 SF  |
| 18   | <i>Burger King</i>               |           |
| 19   | <i>McDonald's</i>                |           |
| 20   | <i>Jack's Family Restaurant</i>  |           |





**SRS Real Estate Partners**

304 20th Street South  
Birmingham, AL 35233  
205.259.2195

**Martin Smith, CCIM**

205.776.6151  
martin.smith@srsre.com

**Cooper Smith**

205.558.6161  
cooper.smith@srsre.com

**SRSRE.COM**

© SRS Real Estate Partners

The information presented was obtained from sources deemed reliable;  
however SRS Real Estate Partners does not guarantee its completeness or accuracy.