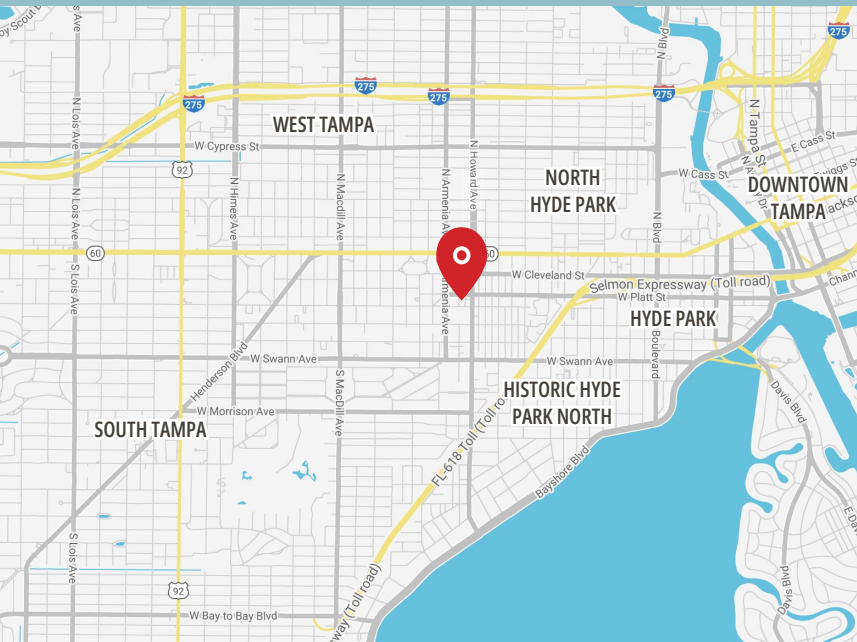


2304 W CLEVELAND STREET



Tampa, FL 33609

Office Building For Lease



PROPERTY HIGHLIGHTS

- **3,069 SF Available Immediately**
- Building features a reception area, conference room, break room, and private rooms
- 18 parking spaces
- Boutique style office within walking distance to a variety of retail amenities
- Located one block south of Kennedy Blvd (SR 60) on the corner of South Moody Ave and West Cleveland St

TOMMY TURNER

Associate

813.386.0459

Tommy.Turner@FranklinSt.com

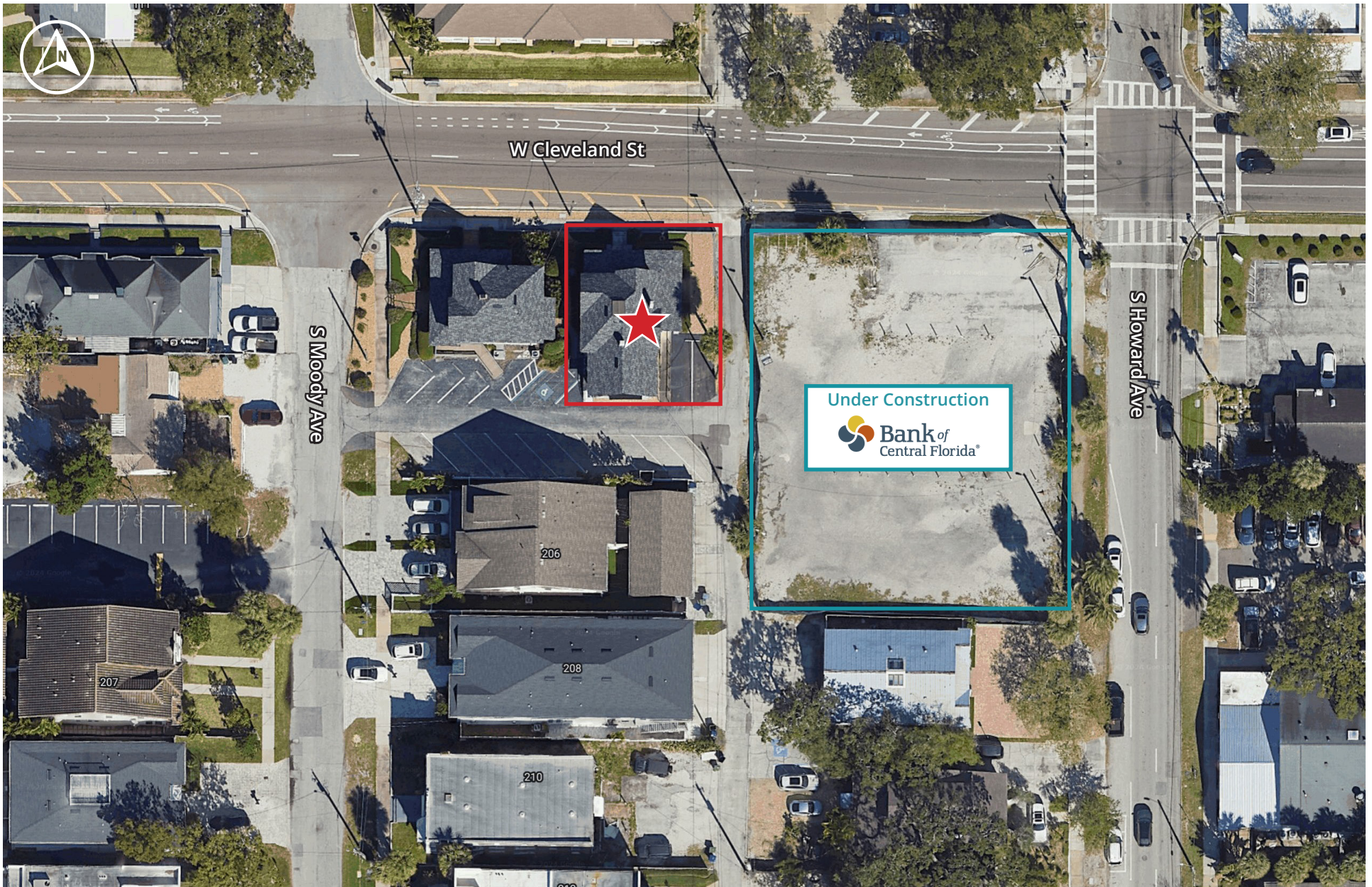


LICENSED REAL ESTATE BROKER | FranklinSt.com

2304 W Cleveland St
Tampa, FL 33609

OFFICE BUILDING FOR LEASE





DRIVE TIME MAP



0.1 mile / 1 minute
To State Road 60 (Kennedy Blvd)



0.7 mile / 2 minutes
To Selmon Expressway



1.0 mile / 4 minutes
To I-275



1.4 miles / 5 minutes
To US 92 (S Dale Mabry Hwy)



2.3 miles / 5 minutes
To Downtown Tampa



3.5 miles / 6 minutes
To I-4



4.3 miles / 9 minutes
To Tampa International Airport



7.0 miles / 11 minutes
To Veterans Expressway

