

# Retail Opportunity

## John Keogh

Senior Broker  
+1 203 497 3953  
[john.keogh@colliers.com](mailto:john.keogh@colliers.com)

205 Whitney Avenue, Suite 300  
New Haven, CT 06511  
P: +1 203 562 5000  
[colliers.com/newhaven](http://colliers.com/newhaven)

## 808 & 848 Chapel Street New Haven, CT

### Street Retail in New Mixed Use Building

Landlord will provide allowance sufficient to bring space from dark shell to vanilla box. Will consider food uses.

Ducid ea sit vendem ipsum quia doluptam cupienet lat arum  
nonseni aeceperupis quia conem andaestoriam qui odis et acilit  
la volluptur? Minctate sapicie ndipsum doluptassunt id mos sitas  
iust, ommolum quistibero essequodit hitat fugiatur rerro ipitatae  
nest et a senimaionsed molupta tecearum re vendame aut et adis  
eiuntorum alit mil idellore, aut ad eium, officip sumque perion.

Copyright © 2023 Colliers International. Information herein has been obtained from sources deemed reliable, however its accuracy cannot be guaranteed. The user is required to conduct their own due diligence and verification.

# For Lease

## Property Details

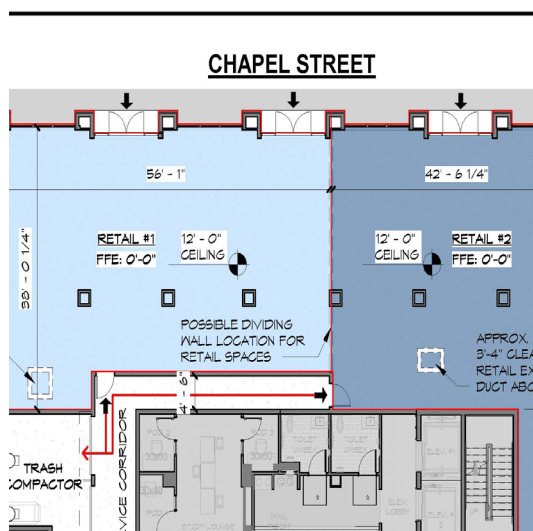
Address:	808 & 848 Chapel Street	
City:	New Haven, CT	
Location:	City, State	
Parking:		
Zoning:		
Rentable Area:	Retail	x SF
	Office	x SF
	Storage	x SF
	Total	x SF
Lease Rate:	\$ \$35.00 NNN	

## Demographics

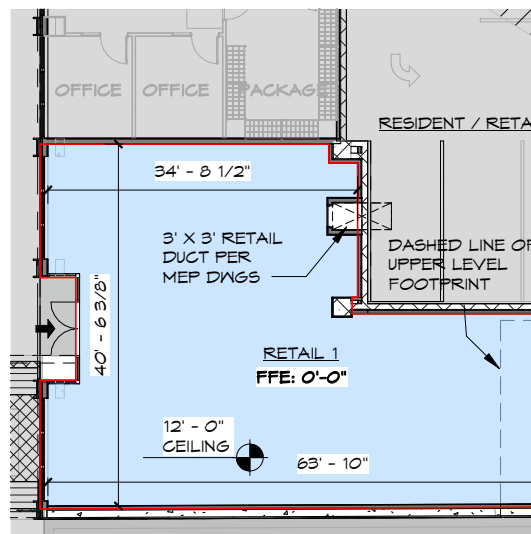
	2 mile	5 mile	10 mile
2023 Population	96,550	263,022	466,186
2023 Households	35,548	101,702	182,645
Avg Household Income	\$67,712	\$78,956	\$95,01
Total Specified Consumer Spend	\$828,099,831	\$2,748,807,556	\$5,682,177,808

## Space Layouts

#808



#848



**John Keogh**

Senior Broker

+1 203 497 3953

john.keogh@colliers.com

205 Whitney Avenue, Suite 300

New Haven, CT 06511

P: +1 203 562 5000

colliers.com/newhaven

