

9564 182 Street Surrey  
(Anniedale-Tynehead)

**FOR SALE**

**ROYAL LEPAGE**

## 1.27 Acres Truck Parking



### DETAILS:

1.27 acres of Industrial Land for **Truck Parking** at a very central location sounded by multiple highway access. Highway-1(Transcanada Hwy), Hwy-17 (176 Street), Hwy-17 and Golden-Ears Way. Future potential to build industrial warehouses with future building exposure to Hwy-1 and Golden-Ears Way.

**ADDRESS:** 9564 182 Street Surrey

**LAND SIZE:** 1.27 Acres

**PROPERTY TYPE:** Industrial Land

**NCP:** Anniedale-Tynehead

**Price: \$5,499,900**



This communication is not intended to cause or induce breach of an existing agency agreement. The information contained herein was obtained from sources which we deem reliable and, while thought to be correct, is not guaranteed by Royal LePage Global Force Realty.

**Ishwinder Ghag**  
Personal Real Estate Corporation  
**Cell: 604-537-4334**

Royal LePage Global Fore Realty  
104-13049 76 Ave Surrey, BC, V3W 2V7  
**E-mail: ishwindergbag@gmail.com**



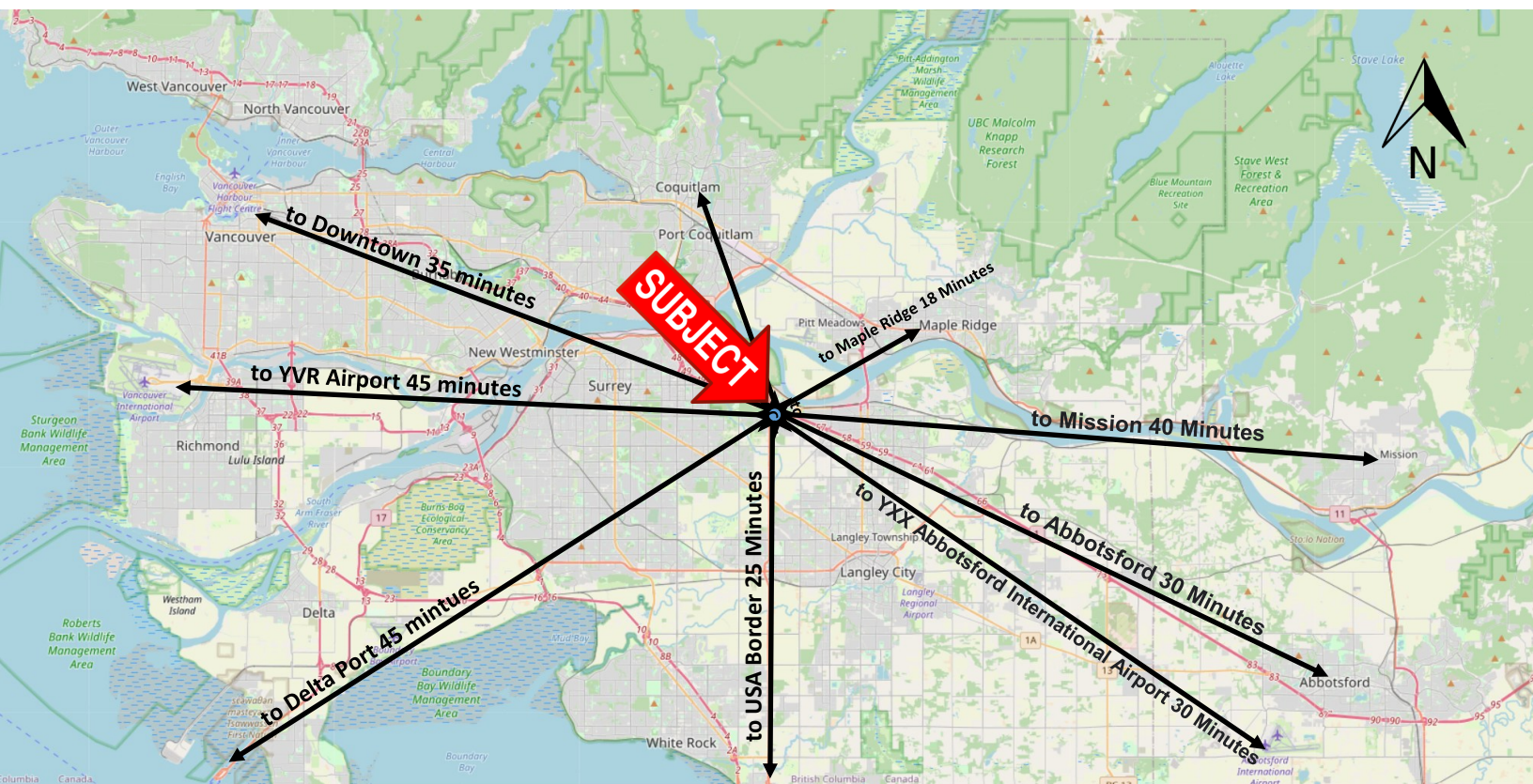
**9564 182 Street Surrey  
(Anniedale-Tynehead)**

**FOR SALE**

**ROYAL LEPAGE**

**Location is in the centre of Lower mainland:**

- Less than 45 mins to all the major destination in the lower mainland
- 4 major highways within minutes from the property
- Away from the city traffic
- Easy access to Portman Bridge
- Minutes away from the future Skytrain On Fraser Hwy.
- Bus stop is only 1 block away
- 



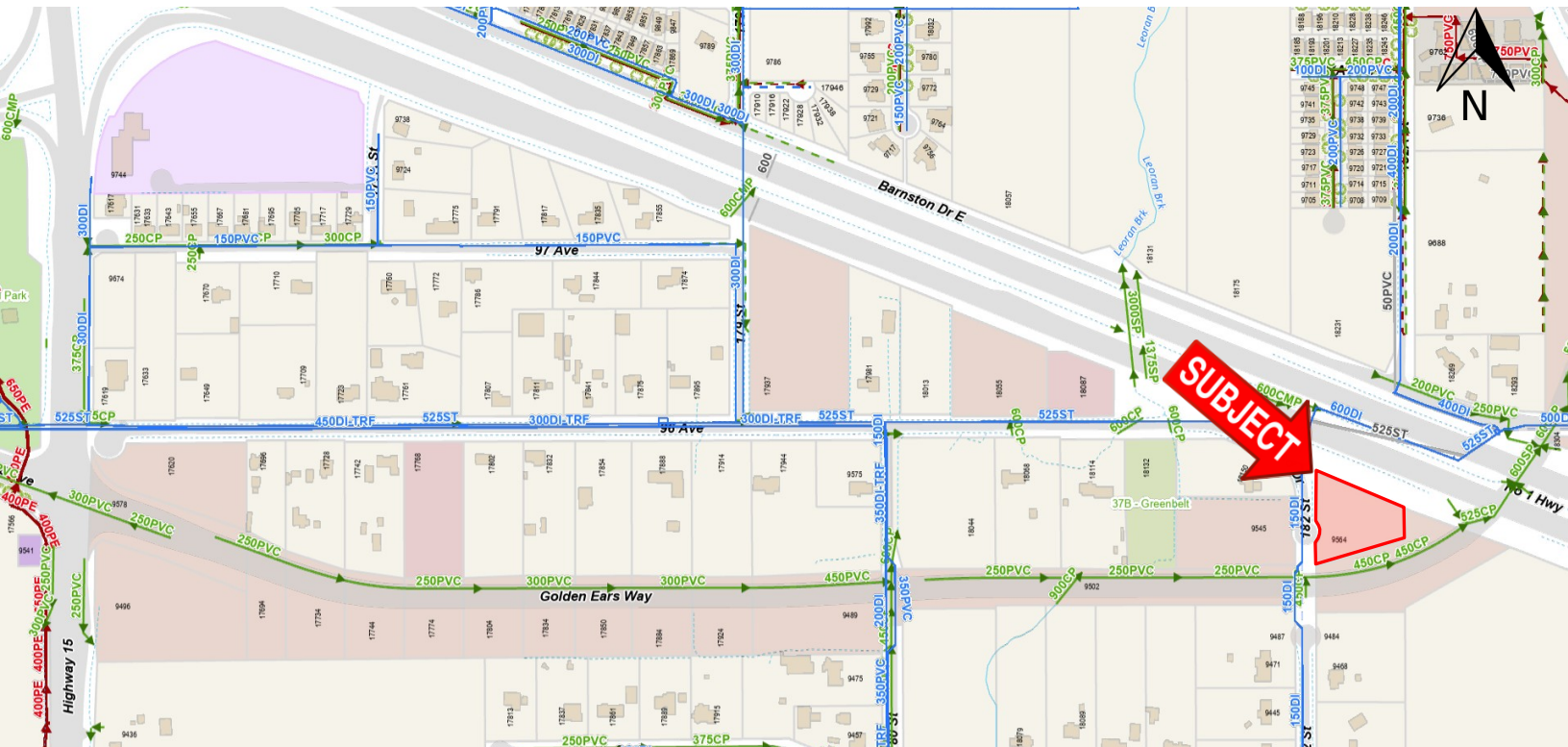


9564 182 Street Surrey  
(Anniedale-Tynehead)

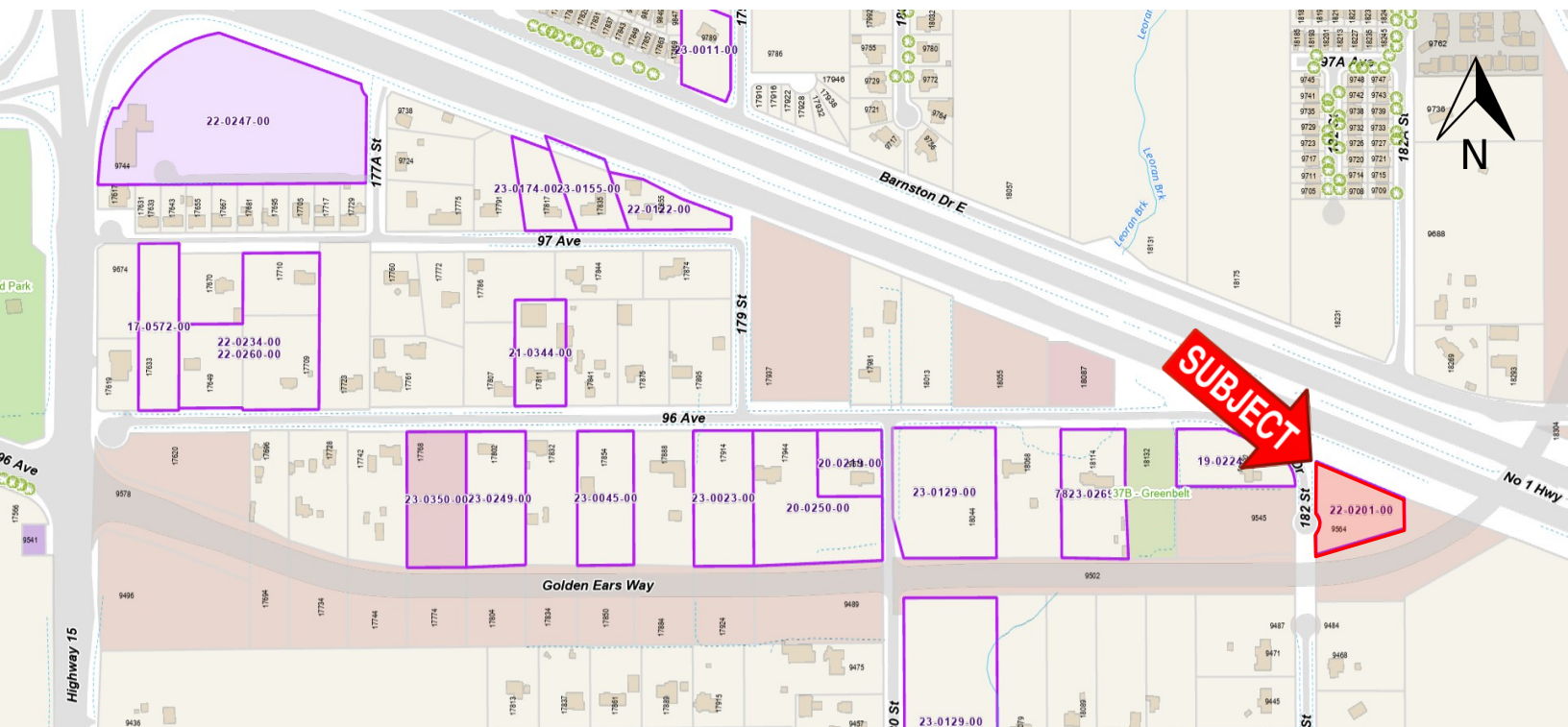
**FOR SALE**

**ROYAL LEPAGE**

**INFRASTRUCTURE MAP**



**ACTIVE APPLICATION IN THE NEIGHBOURHOOD**





9564 182 Street Surrey  
(Anniedale-Tynehead)

**FOR SALE**

**ROYAL LEPAGE**

