



## 4901 WEST VAN BUREN STREET

PHOENIX, ARIZONA 85043

+/- 5,780 Square Feet, Suite 1 (Endcap)

\$15.05 PSF/Year + NNN

Evap Cooled Warehouse

Two Grade Level Doors

Storage Yard

18' Clear Height

Sublease Expires March 2027

Endcap Suite

A-1 Zoning, City of Phoenix



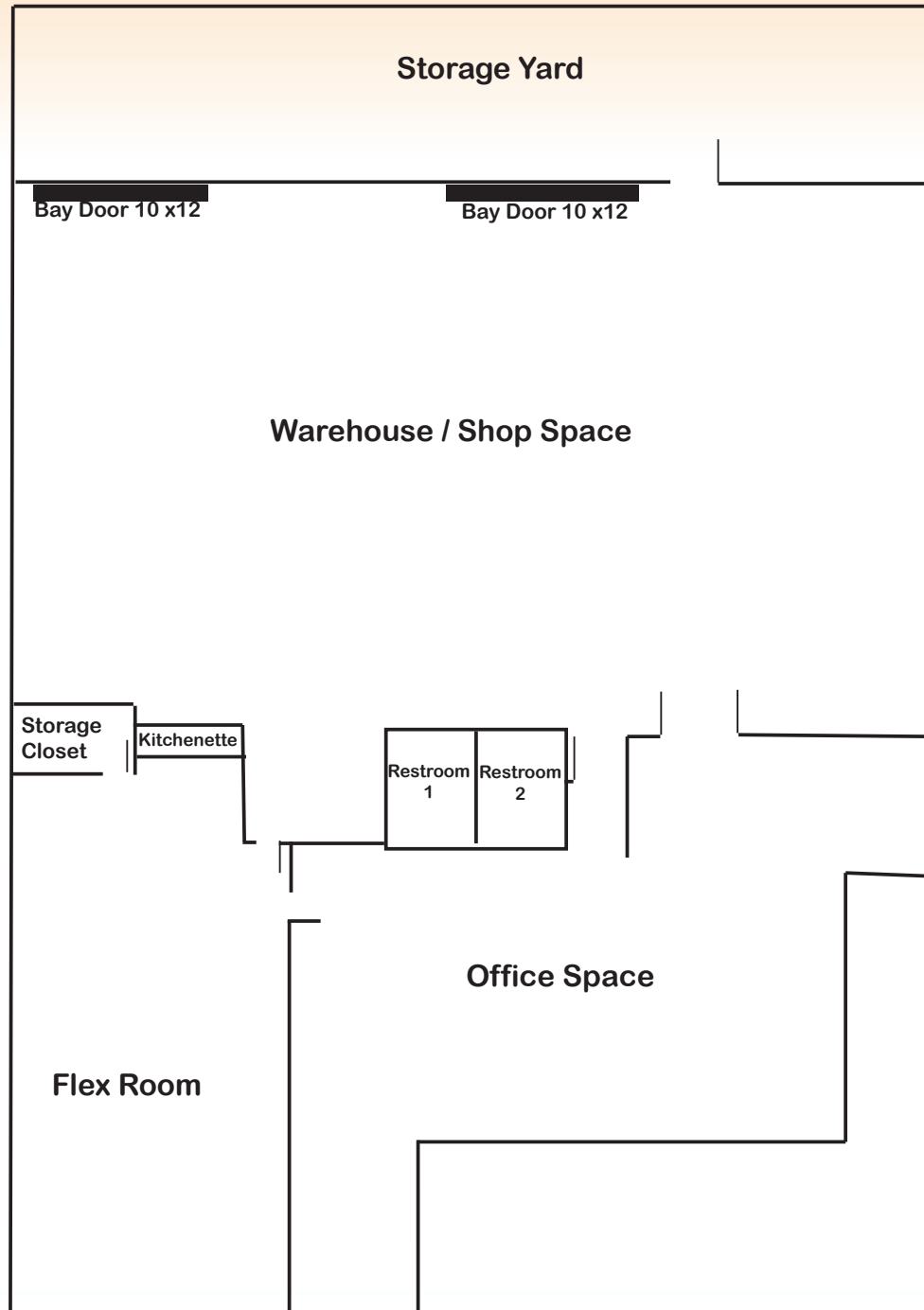
### Matt Harper, CCIM

Senior Vice President

623.692.9435

matt@citywidecre.com

2122 East Highland Avenue, Suite 225 • Phoenix, Arizona 85016 • 602.313.1000 • citywidecre.com

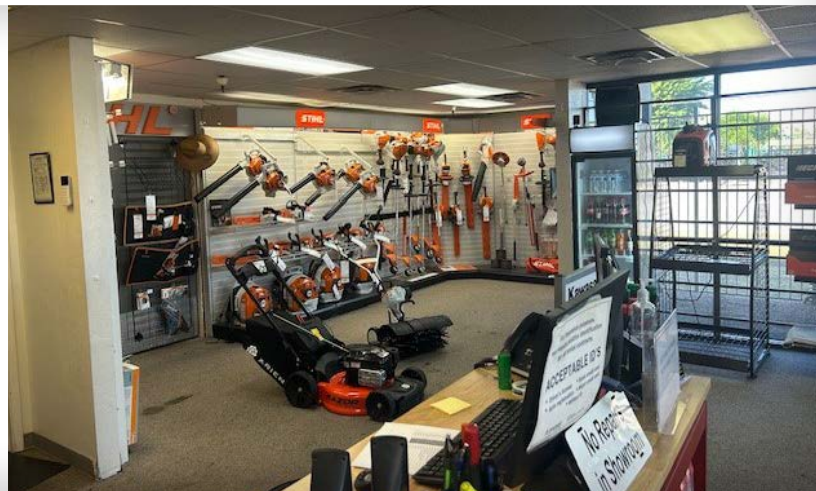


**Matt Harper, CCIM**

Senior Vice President  
623.692.9435  
matt@citywidecre.com

2122 East Highland Avenue, Suite 225 • Phoenix, Arizona 85016 • 602.313.1000 • citywidecre.com





## Matt Harper, CCIM

Senior Vice President  
623.692.9435  
matt@citywidecre.com

2122 East Highland Avenue, Suite 225 • Phoenix, Arizona 85016 • 602.313.1000 • citywidecre.com





**Matt Harper, CCIM**

Senior Vice President  
623.692.9435  
matt@citywidecre.com

2122 East Highland Avenue, Suite 225 • Phoenix, Arizona 85016 • 602.313.1000 • citywidecre.com





**Matt Harper, CCIM**

Senior Vice President  
623.692.9435  
matt@citywidecre.com

2122 East Highland Avenue, Suite 225 • Phoenix, Arizona 85016 • 602.313.1000 • citywidecre.com