

INDUSTRIAL WAREHOUSE FOR SALE
3939 FORSYTH ROAD, WINTER PARK, FL 32792

FOUNDRY
COMMERCIAL



FOR SALE
\$6,950,000

PROPERTY HIGHLIGHTS

- 49,200 SF warehouse available for sale
- 15% office / 85% warehouse
- Building could be sub-divided
- Highly visible on a well trafficked road
- Well-maintained block building with fenced in, secure lot
- LED lighting and clean warehouse space
- Modern office space in excellent condition
- Ample parking
- 16ft clear height
- 3 phase, 800 amps

ROADWAY ACCESS

ROAD	DISTANCE	MILES
FL-417	6 minutes	3.3 miles
FL-408	10 minutes	4.8 miles
FL-528	17 minutes	14.7 miles
I-4	20 minutes	5.6 miles
Turnpike	25 minutes	15.5 miles

FOR MORE INFORMATION, PLEASE CONTACT:

LAWSON DANN
Senior Vice President
407.342.4698
lawson.dann@foundrycommercial.com

JOHN PIETKIEWICZ
Partner
407.619.7342
john.pietkiewicz@foundrycommercial.com

FOUNDRY
COMMERCIAL

CNL Tower II 420 S Orange Avenue, Suite 400
Orlando, Florida 32801

foundrycommercial.com

Although the information contained herein was provided by sources believed to be reliable, Foundry Commercial makes no representation, expressed or implied, as to its accuracy and said information is subject to errors, omissions or changes.

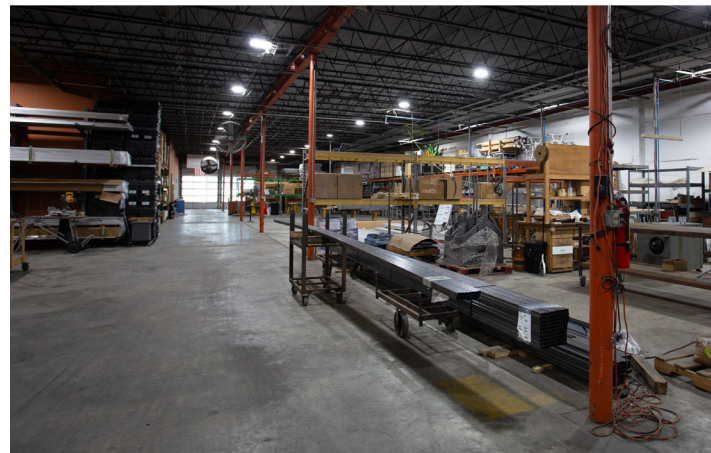
INDUSTRIAL WAREHOUSE FOR SALE

3939 FORSYTH ROAD, WINTER PARK, FL 32792



PROPERTY DETAILS

ADDRESS	3939 Forsyth Road Winter Park, FL 32792
COUNTY	Orange
PARCEL ID	30-2203-0000-00-051
ZONING	IND-4
USE	Warehouse
LOT SIZE	±1.84 AC
BUILDING SIZE	49,200 SF (Warehouse: ±41,900 SF) (Office: ±7,300 SF)
YEAR BUILT	1962
CLEAR HEIGHT	16ft
DOCK-HIGH	4
PARKING SPACES	40
FRONTAGE	194ft - Forsyth Rd
POWER	3-Phase, 800 Amps



FOR MORE INFORMATION, PLEASE CONTACT:

LAWSON DANN

Senior Vice President
407.342.4698
lawson.dann@foundrycommercial.com

JOHN PIETKIEWICZ

Partner
407.619.7342
john.pietkiewicz@foundrycommercial.com

FOUNDRY
COMMERCIAL

420 S Orange Avenue, Suite 400
Orlando, Florida 32801

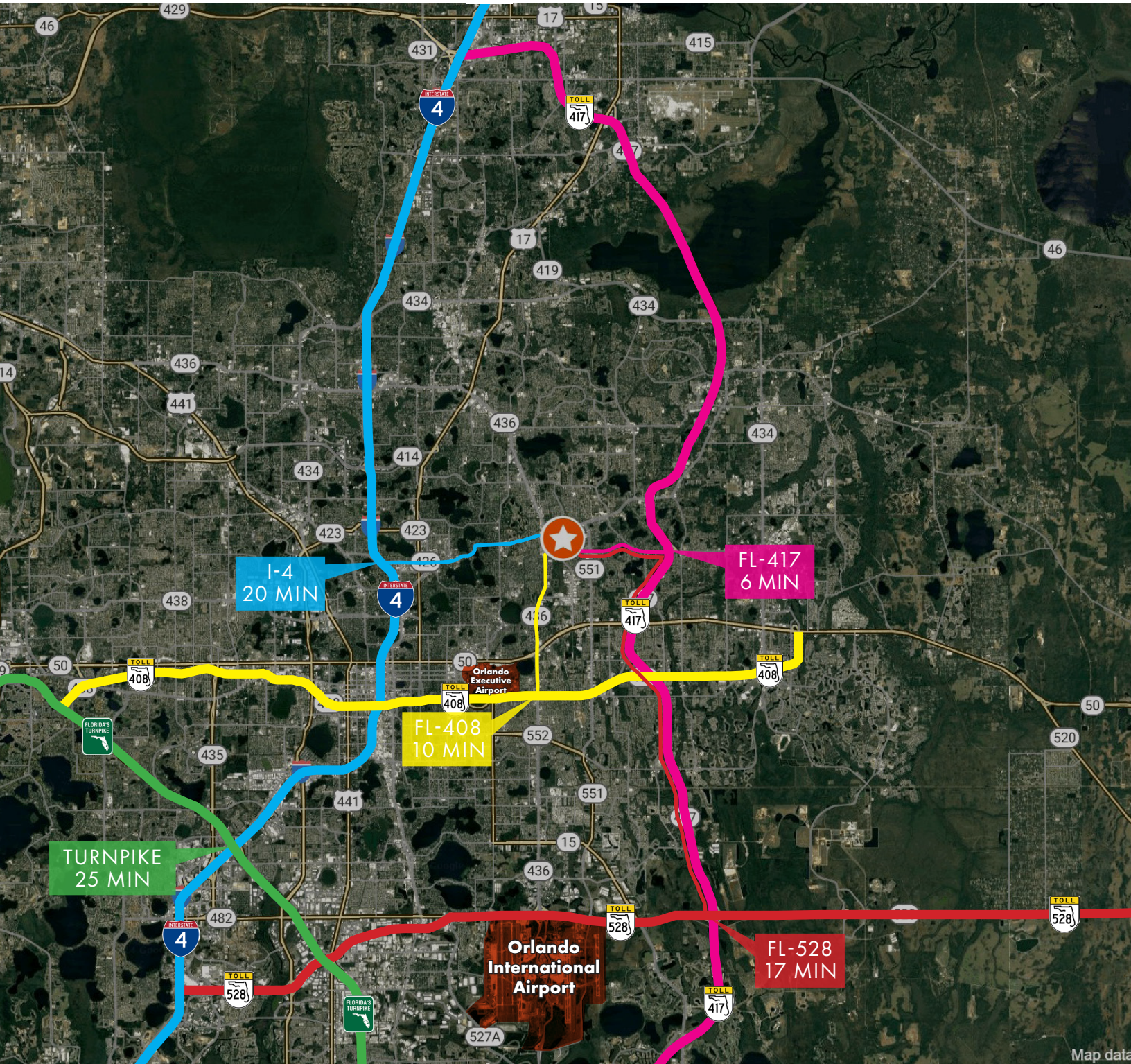
foundrycommercial.com

Although the information contained herein was provided by sources believed to be reliable, Foundry Commercial makes no representation, expressed or implied, as to its accuracy and said information is subject to errors, omissions or changes.

INDUSTRIAL WAREHOUSE FOR SALE

3939 FORSYTH ROAD, WINTER PARK, FL 32792

ROADWAY ACCESS



FOR MORE INFORMATION, PLEASE CONTACT:

LAWSON DANN

Senior Vice President
407.342.4698

lawson.dann@foundrycommercial.com

JOHN PIETKIEWICZ

Partner
407.619.7342

john.pietkiewicz@foundrycommercial.com

FOUNDRY
COMMERCIAL

420 S Orange Avenue, Suite 400
Orlando, Florida 32801

foundrycommercial.com

Although the information contained herein was provided by sources believed to be reliable, Foundry Commercial makes no representation, expressed or implied, as to its accuracy and said information is subject to errors, omissions or changes.