



# 70 W 36

---

OFFICE FOR LEASE  
MIDTOWN SOUTH



## OFFICE FOR LEASE

*Located between Fifth and Sixth Avenues*

*70 West 36th Street New York, NY 10018*

**UNIT 12B**

**RENTABLE SPACE** 3,372 SF

**CEILING HEIGHTS** 11'

## HIGHLIGHTS

- 3 executive offices
- Large bullpen area
- Wet pantry
- Space is filled with natural light
- Steps from Herald Square & all major subway lines
- Walking distance to Penn Station, Grand Central Station, Port Authority, and Moynihan Train Hall

## BUILDING AMENITIES

- Tenant controlled air conditioning
- 24/7 building access
- Attended lobby with surveillance cameras
- Newly modernized elevators

## NEIGHBORS

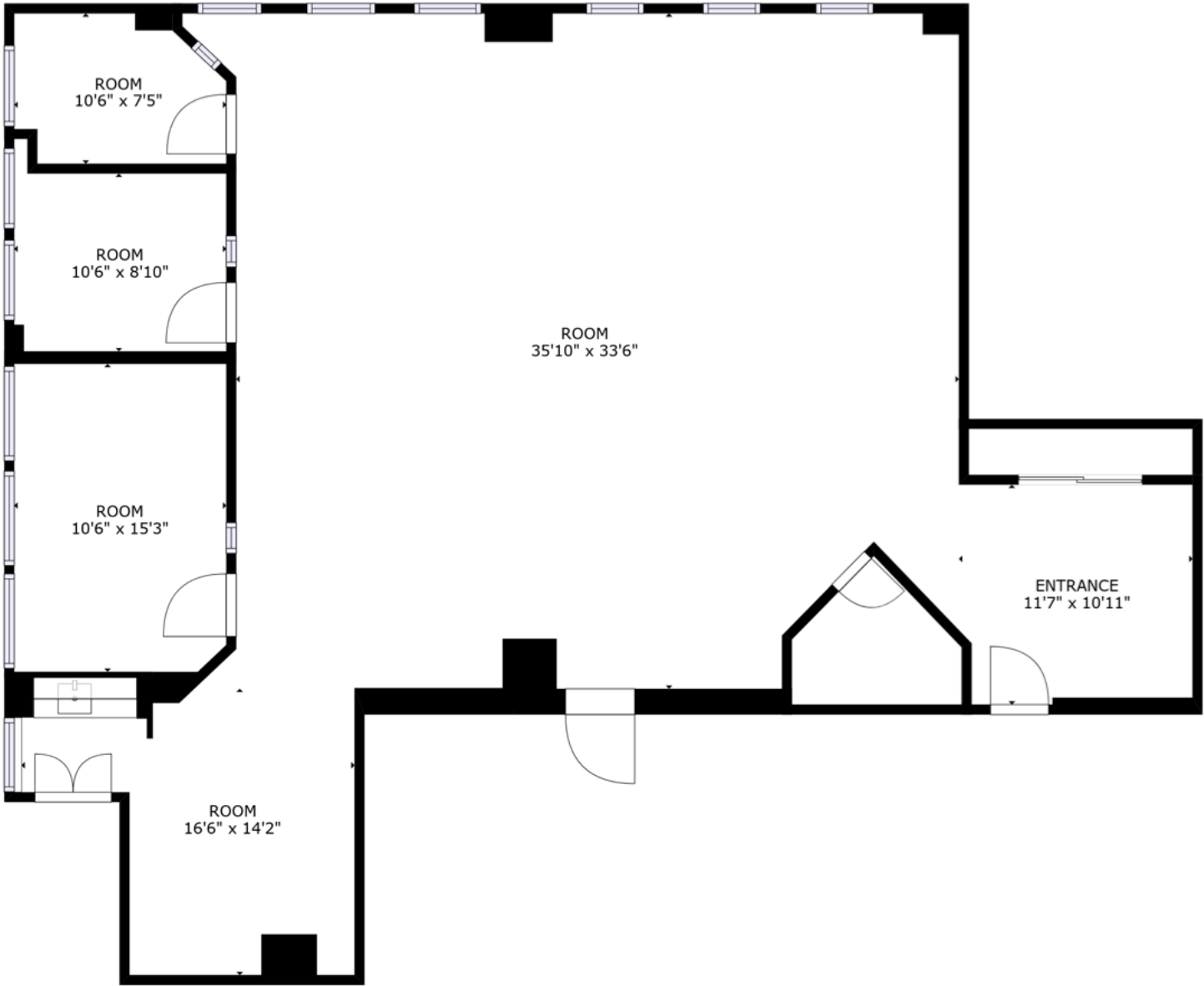
Keen's Steakhouse, Starbucks, Playa Bowls, Wolfgang's Steakhouse, Aux Merveilleux de Fred, Paris Baguette, Clinton Hall, Frankie & Johnnie's Steakhouse, Refinery Hotel, Cafe China, Hyatt Place, Marriott Hotels, The Langham New York

## ASKING RENT

*UPON REQUEST*



FLOOR PLAN



UNIT 12B

LOCATION







42 West 28th Street  
New York, NY 10001

[www.pdpropertiesnyc.com](http://www.pdpropertiesnyc.com)  
[@pdpropertiesnyc](mailto:pdpropertiesnyc)

FRANCESCO BARDAZZI  
[francesco@pdpropertiesnyc.com](mailto:francesco@pdpropertiesnyc.com)  
+1.917.214.8610

ELAD DROR  
[elad@pdpropertiesnyc.com](mailto:elad@pdpropertiesnyc.com)  
+1.646.843.1700