

Ohio State University

Downtown Columbus

Nationwide Insurance

Giant Eagle

Grandview Yard

Ohio Health

W 3rd Ave

Holly Ave

CREATIVE OFFICE USER/WAREHOUSE BUILDING FOR SALE

1305 HOLLY AVE

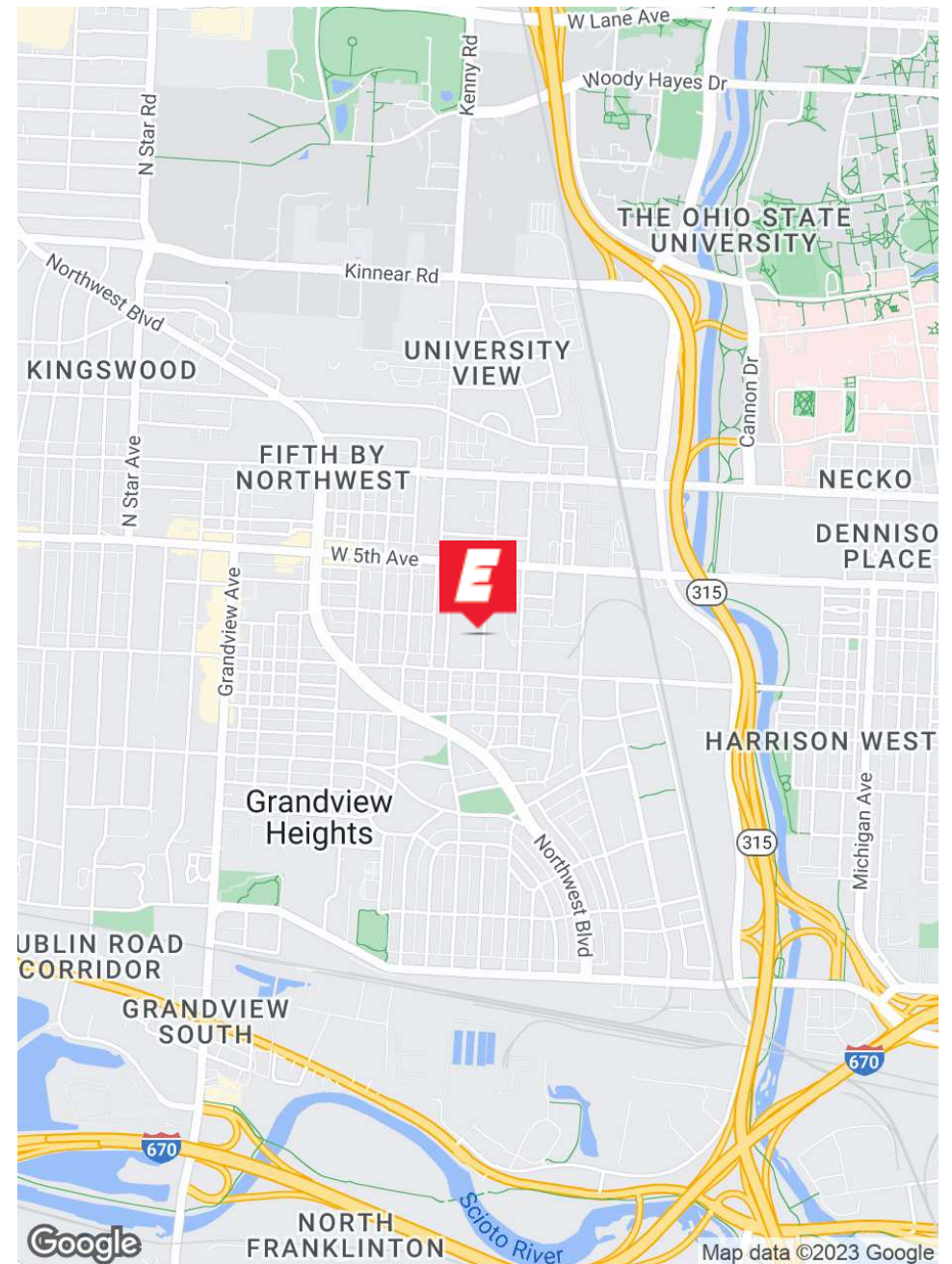
COLUMBUS, OH 43212



A MEMBER OF CORFAC INTERNATIONAL

EXECUTIVE SUMMARY

This unique owner-occupant opportunity in a free-standing building offers boundless potential for a creative office user, a warehouse/industrial operator, or a combination of both. Its prime Grandview location in a vibrant and walkable neighborhood ensures that your business will thrive in an environment that values amenities, convenience, and accessibility.





\$1,440,000

ASKING PRICE

INDUSTRIAL (FLEX SPACE)

PROPERTY TYPE

7,210

TOTAL SF AVAILABLE

1946

YEAR BUILT

.443

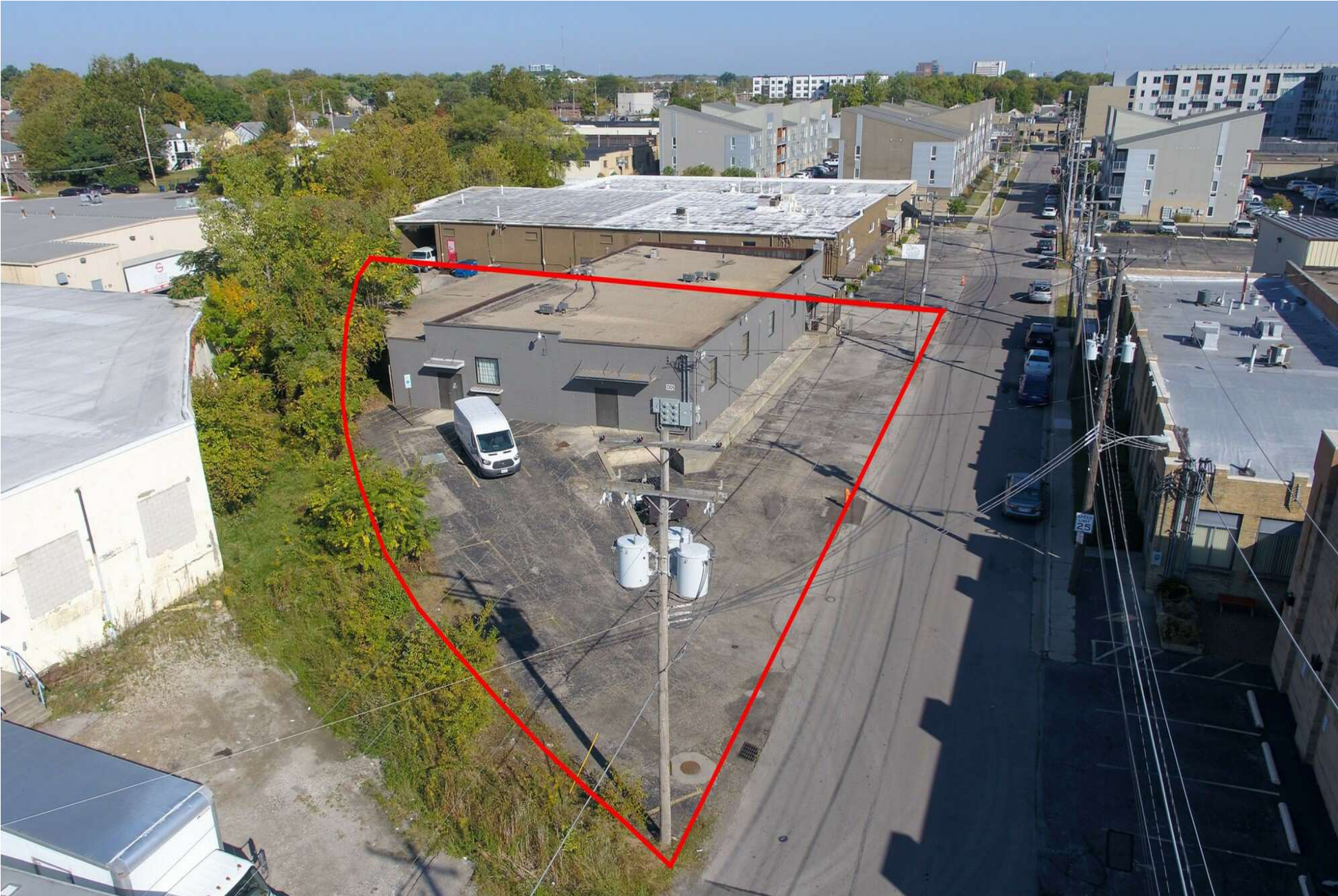
LOT SIZE

GRANDVIEW/COLUMBUS

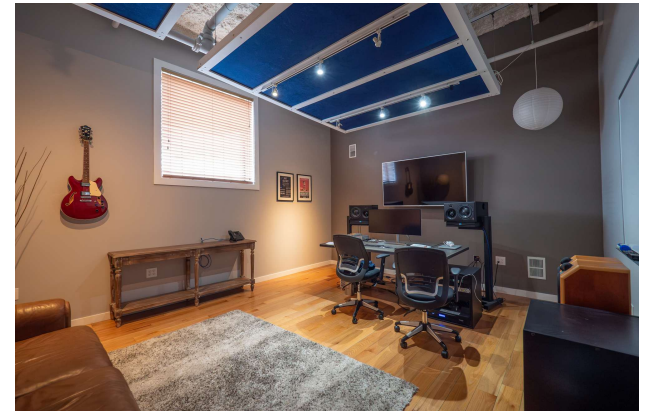
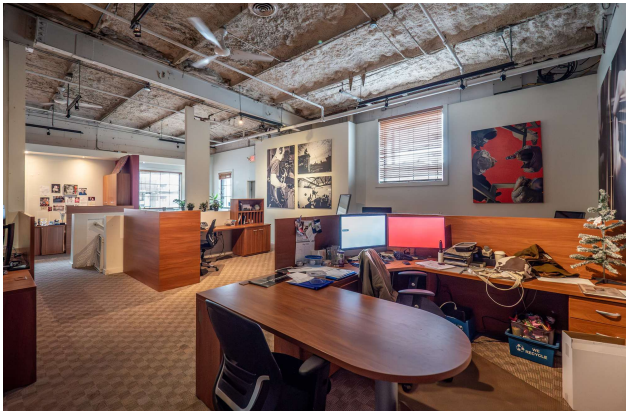
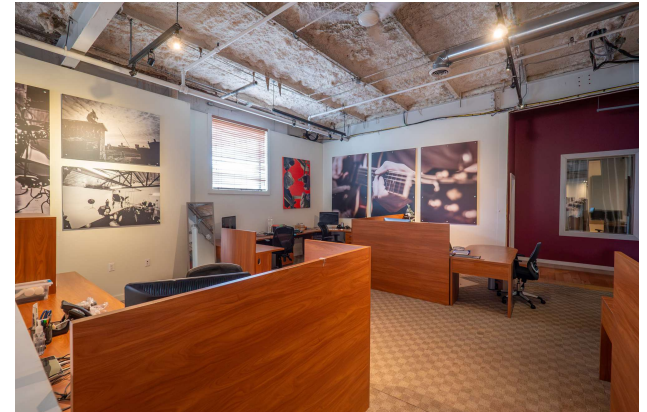
NEIGHBORHOOD/CITY



SITE AERIAL



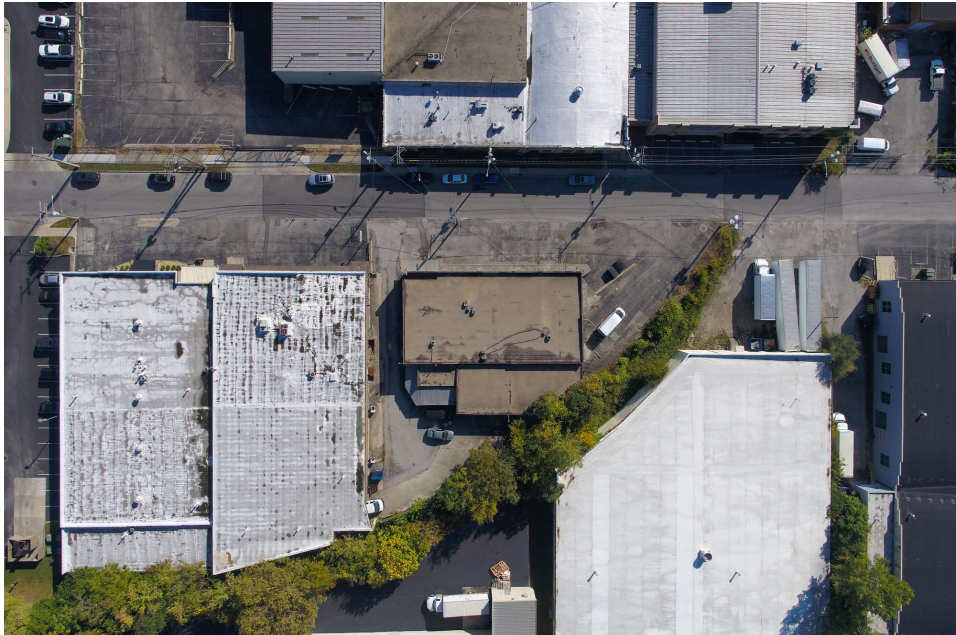
PROPERTY PHOTOS



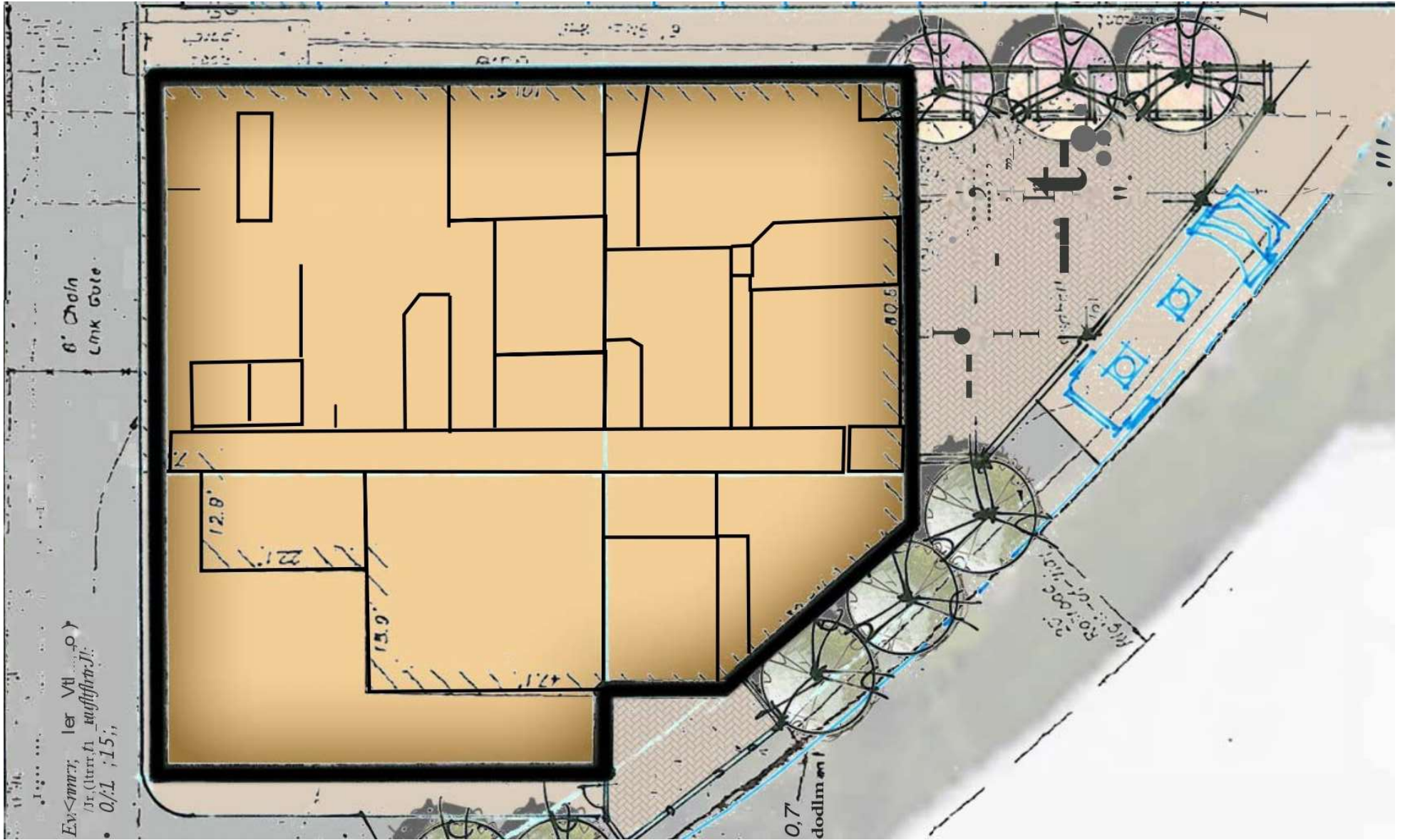
PROPERTY PHOTOS



PROPERTY PHOTOS



FLOOR PLANS



MARKET OVERVIEW MAP





AREA OVERVIEW

Columbus is one of the fastest-growing cities in the nation—thousands of people move to the Columbus area every year, making it the 14th largest city in the United States. With a reputation for its affordable cost of living, top-ranked infrastructure, and talented workforce, the region is one of the most dynamic and diverse in the country. With a vibrant mix of arts and culture, popular collegiate and professional sports teams, an entrepreneurial spirit, a revitalized downtown, and a diverse array of surrounding neighborhoods, Columbus is a great place to call home, raise a family, and do business. With 16 Fortune 1000 companies based in the area, as well as the state's capital offices and The Ohio State University, the metro's economy is sheltered from extreme economic swings with job growth consistently outpacing the national average, people from across the country are moving to Columbus, creating significant population growth.

*Source:<https://columbusregion.com/>

#1

City for tech
Workers

#2

City for college
Grads

#5

City for
Entrepreneurs and
Startups

AREA AMENITIES



LOWER.COM FIELD



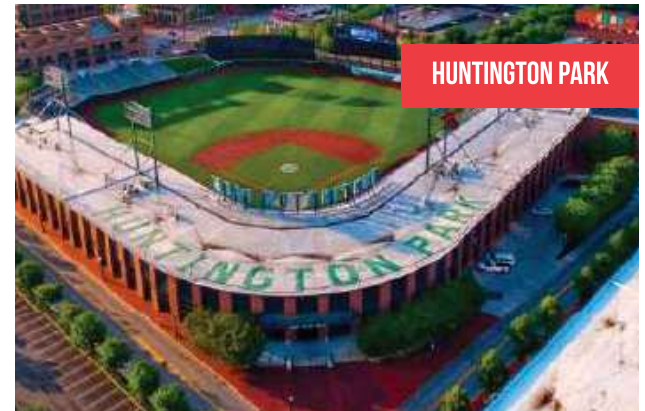
COLUMBUS COMMONS



NATIONWIDE ARENA



SHORT NORTH



HUNTINGTON PARK

NEIGHBORHOOD OVERVIEW - GRANDVIEW HEIGHTS

This walkable, bikeable neighborhood, just two miles from downtown Columbus and its major highways, is one of Columbus' most beloved areas. A hybrid of urban flair and neighborhood warmth, Grandview's vibe is at the same time laid-back and buzzing with energy. Grandview is home to a collection of award-winning craft microbreweries and taprooms. A hub of creativity, culture, and out-of-the-ordinary experiences, Grandview offers an array of guided food and drink tasting tours, unique regional events, demos, classes, art galleries, consignment shops, a working distillery, the nation's oldest operating single-screen theater, and much more. This hip, historic neighborhood is brimming with distinctive flavor and new experiences, as well as a close drive to popular area neighborhoods such as downtown Columbus, Upper Arlington, and the Short North.

Grandview Yard is an urban neighborhood that offers a growing list of commercial businesses, restaurants, grocery and service retail, hospitality, and luxury urban living in one of the area's top school systems. The modern architecture and walkable streets are complimented by lush green spaces, brick and tree-lined walkways, and convenient parking. Surrounded by exciting entertainment, sports, culture and nightlife, Grandview Yard is located just minutes from shopping and dining on Grandview Avenue, entertainment in downtown Columbus and the Arena District, and events at The Ohio State University. Grandview Yard is the first project in the state of Ohio and the largest project in the U.S. to achieve LEED for Neighborhood Development (LEED-ND0) certification by the U.S. Green Building Council.

*Source: <https://www.destinationgrandview.org/about-grandview> and <https://www.grandviewyard.com>

AREA AMENITIES

LOWER.COM FIELD

Soccer-specific stadium in Columbus, Ohio, United States. It serves primarily as the home stadium of the Columbus Crew of Major League Soccer.

CONVENTION CENTER

\$140 mil expansion & renovation of the Convention Center completed in 2017 created 1.8 mil SF facility that includes 3 ballrooms, & 74 meeting rooms.

HUNTINGTON PARK

Home stadium of the Columbus Clippers, a AAA affiliate of the Cleveland Indians since 2009, that seats over 10,000 fans

GRANDVIEW YARD

125-acre mixed-use development with 1.2 mil SF of Class A commercial space, restaurants, grocery & service retail, hospitality and 1500+ residential units

ARENA DISTRICT

A premier mixed-use development with 2.5 mil SF of office space, 300,000 SF of retail, restaurant & entertainment venues, & more than 1,200 residences

SHORT NORTH

A hip, culture-rich area centered on N. High St. featuring Contemporary galleries, unique restaurants and bars, & several of the area's popular small businesses

EDUCATION

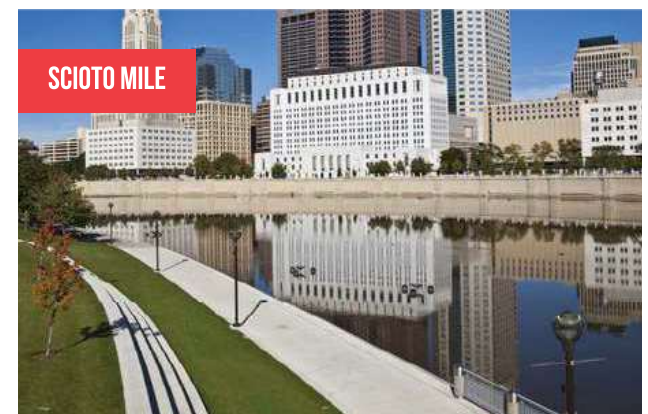
The Columbus Region has one of the highest concentrations of higher education in the nation, with 52 college and university campuses, a total enrollment of more than 134,000 students and 22,000 annual graduates. Of the colleges in the region, two are leading private research institutions, allowing Columbus to attract some of the best and brightest talent in the country. The range of educational opportunities contributes to Columbus' talented and diverse labor force.

The top colleges in the Columbus area are The Ohio State University, Columbus State Community Colleges, and Otterbein University, with enrollment totaling 92,000 +.

*Source: <https://columbusregion.com/>

AREA ATTRACTIONS

Columbus has an array of entertainment to offer. From the unique restaurants and bars in the Short North to the outdoor concerts performed at the Columbus Commons and Express Live concert venue, to Gallery Hop and the North Market, featuring local artistic talent and food vendors, Columbus has something for everyone. The city hosts special events and festivals such as Comfest and The Arnold Classic, as well as several sports teams such as The Ohio State Buckeyes, Columbus Crew, and the Columbus Blue Jackets, giving residents and visitors something to do year-round. Columbus also features many parks and museums including the Columbus Museum of Art, COSI, the world-famous Columbus Zoo and Aquarium, the Scioto Mile, and the Franklin Park Conservatory.



ECONOMY OVERVIEW

Columbus regional economy boasts a highly-diversified base of companies, with no industry representing more than 18% of employment. Home of the world's most recognizable brands—Scotts, Wendy's, Cardinal Health, Express, JPMorgan Chase, Nationwide, Abercrombie & Fitch— innovative small businesses and top-ranked educational and research institutions, the Columbus Region offers a stable environment for companies looking to grow in a variety of sectors.

The Columbus Region is home to a population of 2.1 million, and a potential workforce of 1.2 million. With one of the youngest and most-educated populations in the country – the median age is 35.9 and 36% of residents 25+ holds a bachelor's degree or higher. The Region offers a steady pipeline of young talent with one of the highest populations of millennials in the nation. The Columbus metro ranks first among large Midwest metro areas for population and job growth since 2010 and is among the fastest growing metros in the country.

*Source: <https://columbusregion.com/>

TOP EMPLOYERS

The Ohio State University	31,340 Employees
State of Ohio	24,067 Employees
OSU Health System	22,727 Employees
Ohio Health	21,117 Employees
JPMorgan Chase	20,475 Employees
Nationwide Insurance	13,400 Employees
Honda N. America Inc.	10,701 Employees
Nationwide Children's Hospital	10,032 Employees
Mount Carmel Health System	8,852 Employees
City of Columbus	8,815 Employees
Columbus City Schools	8,004 Employees
L Brands Inc.	7,800 Employees

FORTUNE 1000 COMPANIES IN COLUMBUS



POPULATION OVERVIEW

The Columbus Region is a dynamic 11-county metropolitan area in the midst of unprecedented population growth. Centrally located between Chicago and New York, the Columbus Region boasts the greatest market access of any major metro—with 46% of the United States population within a 10-hour drive.

With one of the youngest and most-educated populations in the country – the median age is 35.9 and 36% of residents 25+ holds a bachelor's degree or higher. The Region offers a steady pipeline of young talent with one of the highest concentrations of college students in the nation.

Columbus is among the top 10 metros in the United States for concentration of young professionals (age 25-34) and is the only metro with the distinction located in the eastern half of the country.

Regional experts are projecting that the population of Central Ohio is expected to grow from two million in 2016 to three million by the year 2050, and is taking steps toward planning to accommodate that continued growth.

*Source: <https://columbusregion.com/>

	POPULATION			
	2019	2020	2021	2022
Columbus	1,644,000	1,666,000	1,687,000	1,708,000



CONFIDENTIALITY & DISCLAIMER

All materials and information received or derived from Elford Realty, its directors, officers, agents, advisors, affiliates and/or any third party sources are provided without representation or warranty as to completeness, veracity, or accuracy, condition of the property, compliance or lack of compliance with applicable governmental requirements, developability or suitability, financial performance of the property, projected financial performance of the property for any party's intended use or any and all other matters.

Neither Elford Realty, its directors, officers, agents, advisors, or affiliates makes any representation or warranty, express or implied, as to accuracy or completeness of the any materials or information provided, derived, or received. Materials and information from any source, whether written or verbal, that may be furnished for review are not a substitute for a party's active conduct of its own due diligence to determine these and other matters of significance to such party. Elford Realty will not investigate or verify any such matters or conduct due diligence for a party unless otherwise agreed in writing.

EACH PARTY SHALL CONDUCT ITS OWN INDEPENDENT INVESTIGATION AND DUE DILIGENCE.

Any party contemplating or under contract or in escrow for a transaction is urged to verify all information and to conduct their own inspections and investigations including through appropriate third party independent professionals selected by such party. All financial data should be verified by the party including by obtaining and reading applicable documents and through appropriate third party independent professionals selected by such party. All financial data should be verified by reports and consulting appropriate independent professionals. Elford Realty makes no warranties and/or representations regarding the veracity, completeness, or relevance of any financial data or assumptions. Elford Realty does not serve as a financial advisor to any party regarding any proposed transaction. All data and assumptions regarding financial performance, including that used for financial modeling purposes, may differ from actual data or performance. Any estimates of market rents and/or projected rents that may be provided to a party do not necessarily mean that rents can be established at or increased to that level. Parties must evaluate any applicable contractual and governmental limitations as well as market conditions, vacancy factors and other issues in order to determine rents from or for the property.

Legal questions should be discussed by the party with an attorney. Tax questions should be discussed by the party with a certified public accountant or tax attorney. Title questions should be discussed by the party with a title officer or attorney. Questions regarding the condition of the property and whether the property complies with applicable governmental requirements should be discussed by the party with appropriate engineers, architects, contractors, other consultants and governmental agencies. All properties and services are marketed by Elford Realty in compliance with all applicable fair housing and equal opportunity laws.

Image Sources: soccerstadiumdigest.com (p. 11 [top left] www.hometeamproperties.net (p. 11 [bottom left]), www.experiencecolumbus.com (p. 11 [top & middle right], ohio.org (p. 11 [bottom right] Shutterstock (p. 09, 12 bottom right, 14), foxnews.com/sports/ohio-state-football-stadium-fans-guidelines-relaxed-ad (p. 12 [top right], (p. 12 [middle right], <https://www.choicehotels.com/ohio/columbus/5-reasons-to-visit> (p. 12 [middle right])

EXCLUSIVELY PRESENTED BY

ANDY MILLS, SIOR, CCIM
614.582.5521
amills@elfordrealty.com

ELFORD REALTY, LLC
614.488.0000
Columbus, OH
elfordrealty.com



A MEMBER OF CORFAC INTERNATIONAL

Ohio State University

Downtown Columbus

Nationwide Insurance

Grandview Yard

Giant Eagle

Ohio Health

W 3rd Ave

Holly Ave

CREATIVE OFFICE USER/WAREHOUSE BUILDING FOR SALE

1305 HOLLY AVE

COLUMBUS, OH 43212



A MEMBER OF CORFAC INTERNATIONAL