

BUILDING FOR SALE - REDEVELOPMENT OR REUSE
46000 Sugarbush Road
Chesterfield Township, MI 48047



AGENT CONTACT INFO

ANTHONY RUBINO O: 586.254.0900 x101 • C: 586.873.5419 • anthony@pilotpg.com • **JIMMY DIEHL** O: 586.254.0900 x109 • C: 586.337.5241 • j.diehl@pilotpg.com

Offices in Sterling Heights and Port Huron to serve you
586.254.0900 • www.pilotpg.com

PILOT

PROPERTY GROUP

38600 Van Dyke, Suite 325
Sterling Heights, MI 48312
586.254.0900 • www.pilotpg.com

AGENT CONTACT:

ANTHONY RUBINO

O: 586.254.0900 x101 • C: 586.873.5419 • anthony@pilotpg.com

JIMMY DIEHL

O: 586.254.0900 x109 • C: 586.337.5241 • j.diehl@pilotpg.com

3 PROPERTY SUMMARY

4 FLOOR PLAN

5 AREA & DEMOGRAPHICS

6 GALLERY



Information is subject to verification and no liability for errors
or omissions is assumed. Price is subject to change and listing withdraw without notice.

Pilot Property Group has prepared this document/email for marketing, or general information purposes only. Information contained herein has been obtained from the owners, or from other sources deemed reliable. We have no reason to doubt its accuracy, but we can not guarantee it.

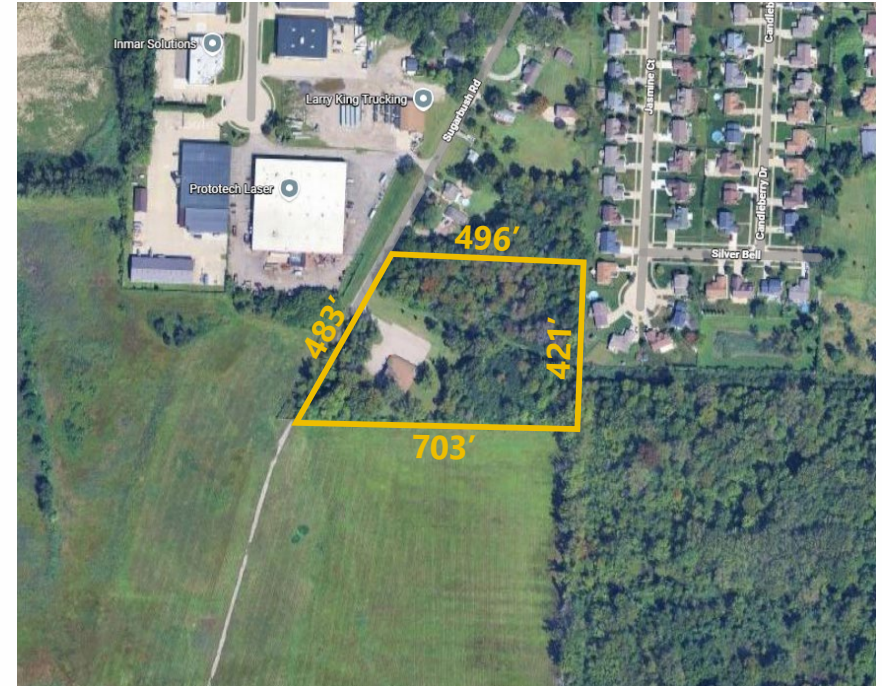
All properties are subject to change, or withdraw without notice.

PROPERTY SUMMARY

46000 SUGARBUSH ROAD CHESTERFIELD TOWNSHIP, MI 48047

- Former Chesterfield Township Youth Center
- Existing building suitable for potential reuse or redevelopment
- Water, sewer and electric available

Property Type: Flex or Redevelopment
Cross Streets: East side of Sugarbush, South of 21 Mile
Total Square Footage: 4,116
Parcel Size: 5.799 Acres
Zoning: R-1-B
<https://ecode360.com/CH3504/document/563228489.pdf>
Ceiling Height: 16'
Parking Spaces: Approx. 40
Parcel Number: 15-09-32-351-002
Sale Price: \$395,000.00

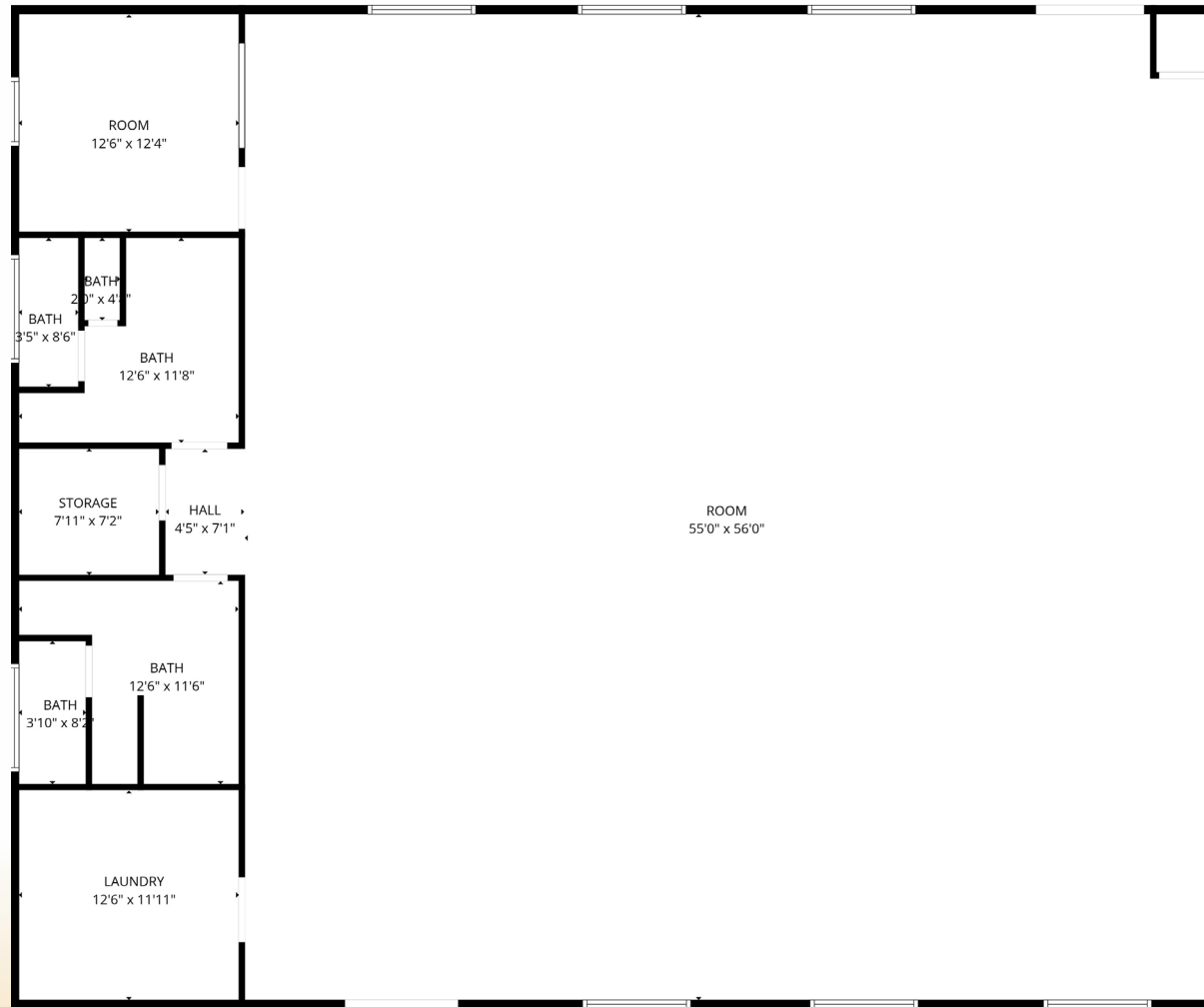


AGENT CONTACT INFO

ANTHONY RUBINO O: 586.254.0900 x101 • C: 586.873.5419 • anthony@pilotpg.com • **JIMMY DIEHL** O: 586.254.0900 x109 • C: 586.337.5241 • j.diehl@pilotpg.com

Offices in Sterling Heights and Port Huron to serve you
586.254.0900 • www.pilotpg.com

FLOOR PLAN



AGENT CONTACT INFO

ANTHONY RUBINO O: 586.254.0900 x101 • C: 586.873.5419 • anthony@pilotpg.com • **JIMMY DIEHL** O: 586.254.0900 x109 • C: 586.337.5241 • j.diehl@pilotpg.com

Offices in Sterling Heights and Port Huron to serve you
586.254.0900 • www.pilotpg.com

AREA & DEMOGRAPHICS

CHESTERFIELD TOWNSHIP

Chesterfield Township is in eastern Macomb County and is bordered on the north by Lenox Township and the village of New Haven; on the east by Ira Township in St. Clair County, and by the village of New Baltimore; on the southeast by Anchor Bay, which is a part of Lake St. Clair; on the south by Harrison Township; and on the west by Macomb Township.

According to the United States Census Bureau, the township has a total area of 30.6 square miles. Much of Chesterfield Township is dominated by suburban subdivisions and shopping developments. Anchor Bay influences the southeastern part of the community, where many pleasure boats, docks, and marine-related businesses can be found.



DEMOGRAPHICS & TRAFFIC			
	2 MILE	5 MILES	10 MILES
2024 POPULATION	18,828	137,218	443,260
2024 HOUSEHOLDS	7,347	55,928	181,316
2024 AVERAGE INCOME	\$113,930	\$108,196	\$102,946
TRAFFIC COUNTS	13,501 VPD ON 21 MILE		



AGENT CONTACT INFO

ANTHONY RUBINO O: 586.254.0900 x101 • C: 586.873.5419 • anthony@pilotpg.com • **JIMMY DIEHL** O: 586.254.0900 x109 • C: 586.337.5241 • j.diehl@pilotpg.com

Offices in Sterling Heights and Port Huron to serve you
586.254.0900 • www.pilotpg.com

GALLERY



AGENT CONTACT INFO

ANTHONY RUBINO O: 586.254.0900 x101 • C: 586.873.5419 • anthony@pilotpg.com • **JIMMY DIEHL** O: 586.254.0900 x109 • C: 586.337.5241 • j.diehl@pilotpg.com

*Offices in Sterling Heights and Port Huron to serve you
586.254.0900 • www.pilotpg.com*