

**Howard
Hanna**

Premier Properties
By Barbara Alexander
COMMERCIAL REAL ESTATE

AVAILABLE
304-594-1519
www.move2wv.com



2290 Beverly Pike, Elkins, WV

For Sale
\$549,000

1.84 Acres +/-

Level Site
All Utilities

312' Frontage

No Zoning
Near Airport

2021 AADT
14,686
10.5% Trucks

US 250/219
Primary Artery



- More than 300' frontage
- 1.84 acres +/-
- Level Site
- Hot Commercial Area
- No Zoning
- Near Airport
- Major US Highway
- All Utilities Available

Great commercial location just past Walmart, with more than 300 feet of frontage along US 219/US 250 (also known as the Seneca Trail & Beverly Pike), the primary route from Elkins to Huttonsville, Snowshoe Ski Resort, Green Banks US Observatory, the Monongalia National Forest & more. This level site has 1.84 +/- acres with utilities available, no zoning. Good traffic count and easy access makes this a great location. This is Your Business Site! Don't miss this opportunity! Contact the listing agent today.





Glotfely
Tire

Auto
Parts

1.84 ac +/-
Site

0.05 Ac.

0.01 Ac.

SEE MAP

















Salon Bumbi

SITE

Elks Lodge
Restaurant and Bar

Independent
Order of
Oddfellows
Cemetery

219/11

219

250

55

92

219

250

Beverly pike

Sam Legg Blvd

Homewood Dr

Chenoweth Creek

Chenoweth

Homewood Dr

Robin Ln

Country Club Rd

Elkins Memorial Dr

Elkins Memorial Dr

Homewood Dr

Blue Pond Ln

Blue Pond Ln

Ash Ln



Super Buffet
Bob Evans

Sakura Japanese
Steak House

Subway
Walmart Supercenter

Burger King

Dairy Queen
Grill & Chill

Fox's Pizza

El Herradura

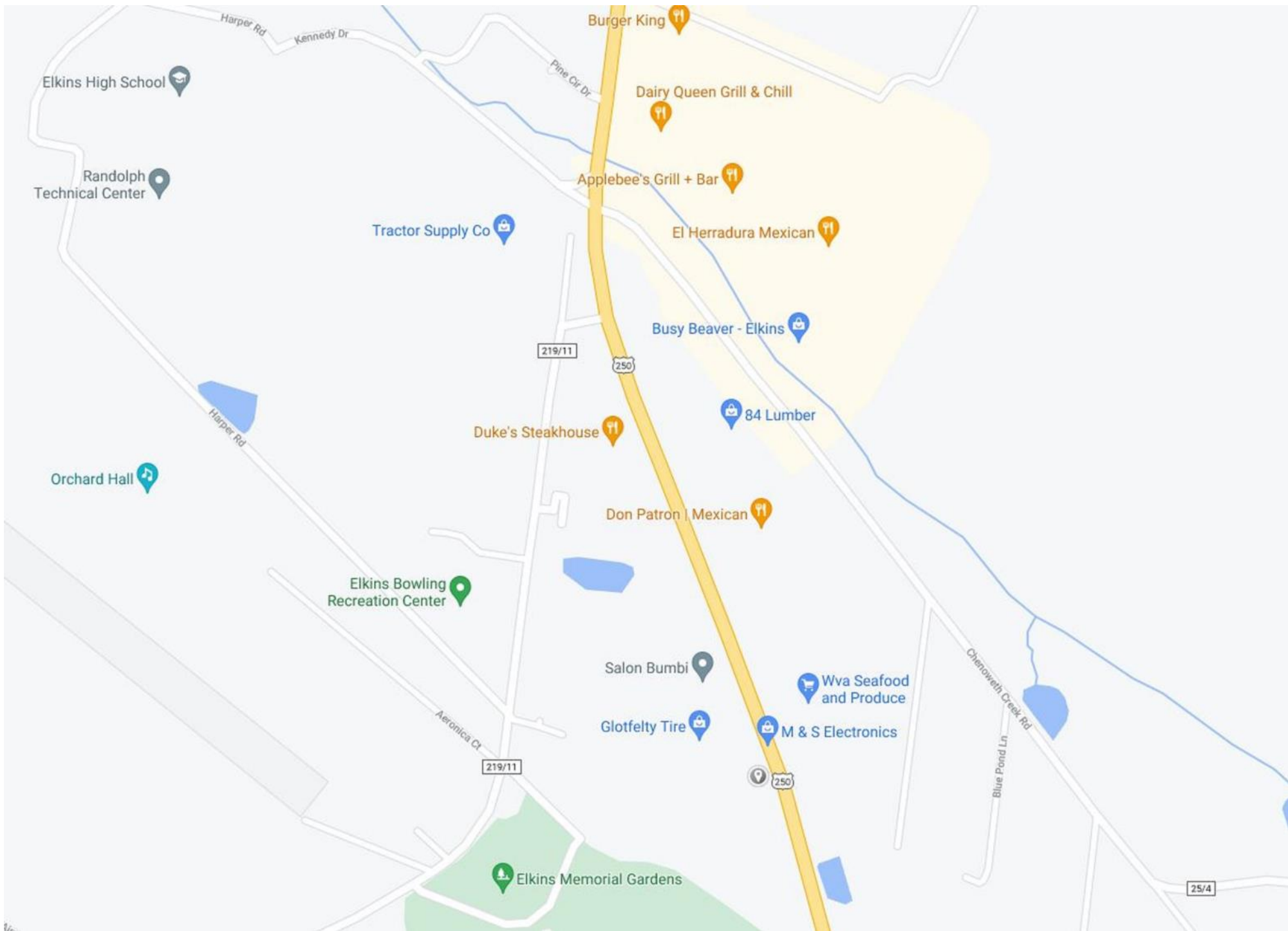
Little Caesars Pizza

Duke's Steakhouse

Don Patron
Mexican Grill

Elks Lodge
Restaurant and Bar





Elkins High School

Randolph Technical Center

Tractor Supply Co

Burger King

Dairy Queen Grill & Chill

Applebee's Grill + Bar

El Herradura Mexican

Busy Beaver - Elkins

Orchard Hall

Duke's Steakhouse

84 Lumber

Elkins Bowling Recreation Center

Don Patron Mexican

Salon Bumbi

Wva Seafood and Produce

Aeronica Ct

Glotfelty Tire

M & S Electronics

219/11

Elkins Memorial Gardens

Chenoweth Creek Rd
Blue Pond Ln

25/4



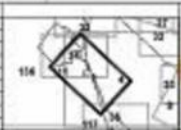
FOR TAX PURPOSES ONLY
LANDMARK
 geospatial

Legend	Symbol	Description
Water	Blue area	Water
Highway	Thick black line	Highway
Other Road	Thin black line	Other Road
Boundary	Dashed line	Boundary
Other	Other symbols	Other

Revisions

All tax maps created under the provisions of reapportionment legislation are the property of the Assessor of Randolph County, West Virginia and the reproduction, copying, modification, distribution or sale of such tax maps or any copies thereof without the written permission of the Randolph County Assessor is prohibited by law.

Revision	Date	Description
1	8-20-1994	010008 TR1 6,87500 03 0277 7-1-2004
2	11-16-1995	010008 TR 8 4-20-2005
3	7-1-1993	020010 TR 8 5-1-1999
4	7-1-1993	070008 TR 8 3-1-1999
5	7-1-1993	040007 TR 1-1-2000
6	7-1-1993	040008 TR 1-1-2000
7	7-1-1993	040009 TR 1-1-2000
8	7-1-1993	040010 TR 1-1-2000
9	7-1-1993	040011 TR 1-1-2000
10	7-1-1993	040012 TR 1-1-2000

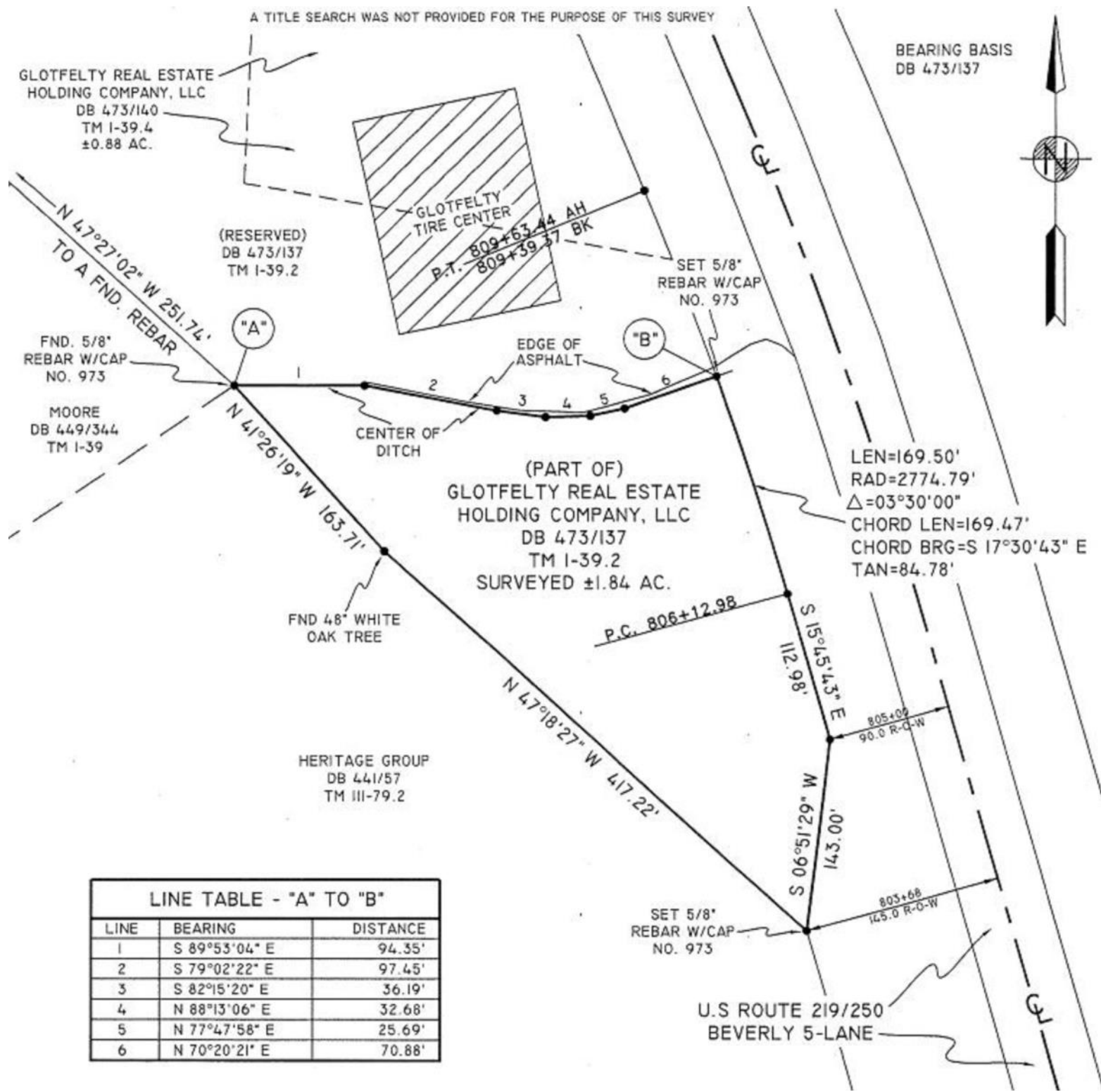


RANDOLPH COUNTY
 Assessor's Office
 Phyllis K. Yokum, Assessor
 ELKINS, WV

BEVERLY
 District 02 Map No. 1
 Date of Publication: 1/28/2019
 Scale: 1"=100'

A TITLE SEARCH WAS NOT PROVIDED FOR THE PURPOSE OF THIS SURVEY

BEARING BASIS
DB 473/137



LINE TABLE - "A" TO "B"

LINE	BEARING	DISTANCE
1	S 89°53'04" E	94.35'
2	S 79°02'22" E	97.45'
3	S 82°15'20" E	36.19'
4	N 88°13'06" E	32.68'
5	N 77°47'58" E	25.69'
6	N 70°20'21" E	70.88'

(PART OF)
GLOTFELTY REAL ESTATE
HOLDING COMPANY, LLC
DB 473/137
TM 1-39.2
SURVEYED ±1.84 AC.

LEN=169.50'
RAD=2774.79'
Δ=03°30'00"
CHORD LEN=169.47'
CHORD BRG=S 17°30'43" E
TAN=84.78'

U.S. ROUTE 219/250
BEVERLY 5-LANE

North Central West Virginia's
Leaders in Real Estate!

COMMERCIAL DIVISION

304-594-1519

www.move2wv.com

Howard Hanna Premier Properties
by Barbara Alexander, LLC
2800 Cranberry Square
Morgantown, West Virginia
304-594-0115
www.move2wv.com

Howard Hanna

Premier Properties By Barbara Alexander

COMMERCIAL REAL ESTATE

Barbara Alexander, Broker / 2800 Cranberry Sq, Morgantown, WV

KAY MICHAEL ALEXANDER

SALES ASSOCIATE/REALTOR
COMMERCIAL DIRECTOR

ABR, GREEN, GRI, HOMES OF DISTINCTION
304-282-0077 / 304-594-0115

KALEXANDER@HOWARDHANNA.COM



Commercial
Land
Retail
Office
Industrial
Residential
Hanna Luxury



At Howard Hanna Premier Properties by Barbara Alexander, LLC we strive to bring the best service to our clients utilizing a wide variety of tools, media, technology, and our national network of commercial brokers, companies and resources.

