

**1501**

**Main Street**

*Venice Beach*

OFFICE / RETAIL / SHOWROOM

WINDWARD AVE

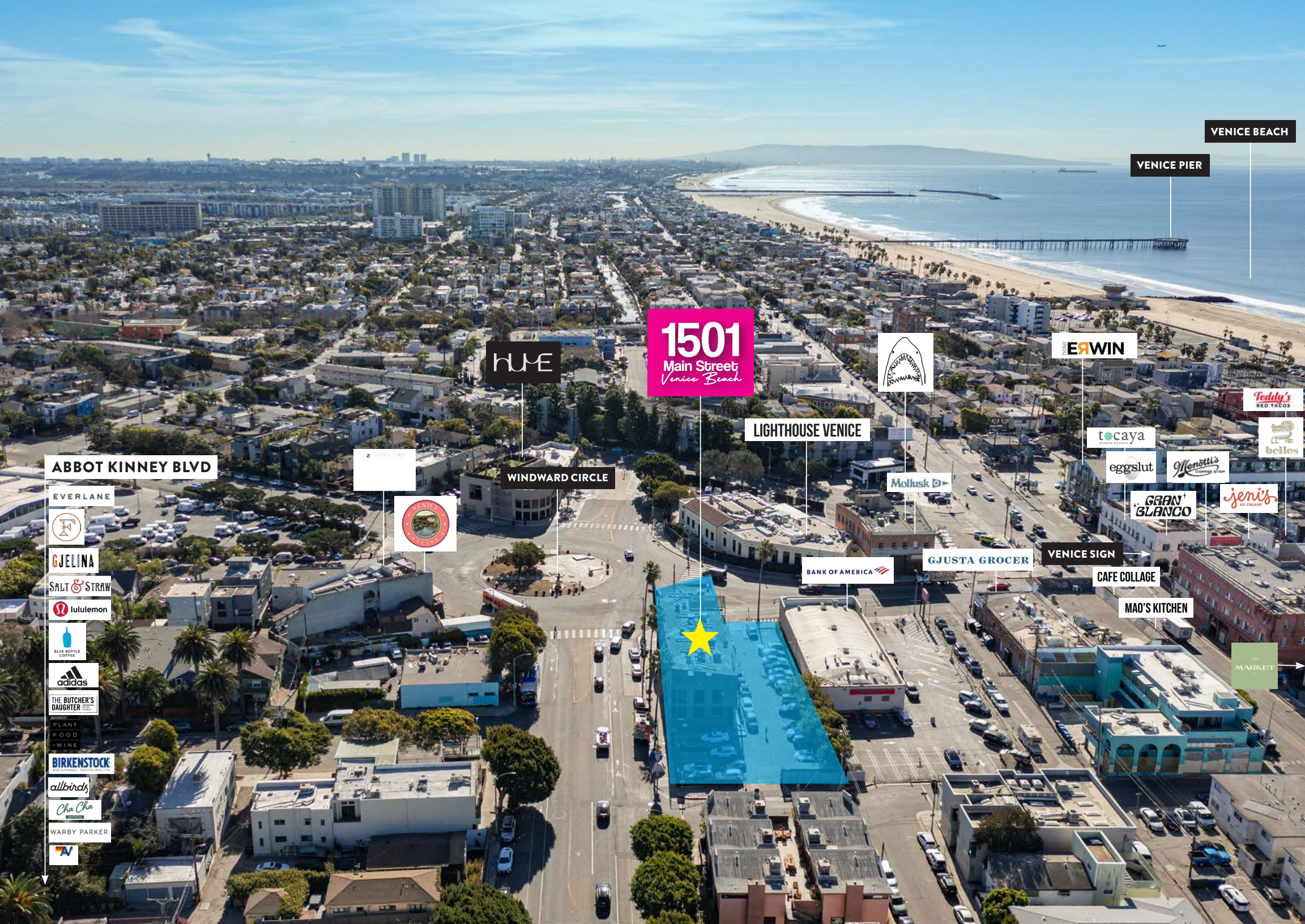
MAIN STREET

**JAKE ZACUTO**  
Managing Director  
310.469.9012

**ANDREW SINASOHN**  
Executive Vice President  
310.469.9023

**SAMMY SANTANA**  
Senior Director  
213.807.9798





VENICE BEACH

VENICE PIER

1501  
Main Street  
Venice Beach

hUE



ERWIN

Teddy's  
RED TACOS

belles

tocaya

eggslut

Menotti's

Jeni's  
ICE CREAM

GRAN  
BLANCO

LIGHTHOUSE VENICE

Mollusk

BANK OF AMERICA

GJUSTA GROCER

VENICE SIGN

CAFE COLLAGE

MAO'S KITCHEN

MARKET

WINDWARD CIRCLE



ABBOT KINNEY BLVD

EVERLANE



GJELINA

SALT & STRAW

lululemon



adidas

THE BUTCHER'S  
DAUGHTER

PLANT  
FOOD  
WINE

BIRKENSTOCK

allbirds

Cha Cha

WARBY PARKER





# LEASE DETAILS

1501 MAIN STREET  
VENICE, CA 90291

*Located in the heart of Venice's dining and entertainment neighborhood, Windward Circle. The space is surrounded by buzzing restaurants, cafes, and nightlife. Across the street from Hume, The Lighthouse, and walking distance to the Venice Boardwalk.*

## AVAILABILITIES

SUITE	SF	PRICE	USE
106	798 SF	\$5.25/SF + NNN	RETAIL / SERVICE
107-Mezz	1,687 SF	\$4.75/SF + NNN	OFFICE
202	1,129 SF	\$4.75/SF + NNN	OFFICE
205	608 SF	\$4.75/SF + NNN	OFFICE

*\*Estimated nets \$1.35/SF*

## OFFICE / RETAIL / SHOWROOM

Bright retail/offices with open area, private offices, private bathroom, & on-site parking.

## TREMENDOUS VISIBILITY

Located steps to one of the most photographed streets in the world; around the corner from the Venice Sign.

## IRREPLACEABLE LOCATION

At the apex of Venice cool and West Coast culture, surrounded by popular cafes, trendy shops and the iconic Venice Boardwalk.





LEASE

1501 MAIN STREET, VENICE, CA 90291



SUITE 202  
OFFICE

SUITE 205  
OFFICE

SUITE 107  
OFFICE

SUITE 106  
OFFICE/RETAIL





LEASE  
SUITE 106

1501 MAIN STREET, VENICE, CA 90291



**LEASE**  
**SUITE 106**

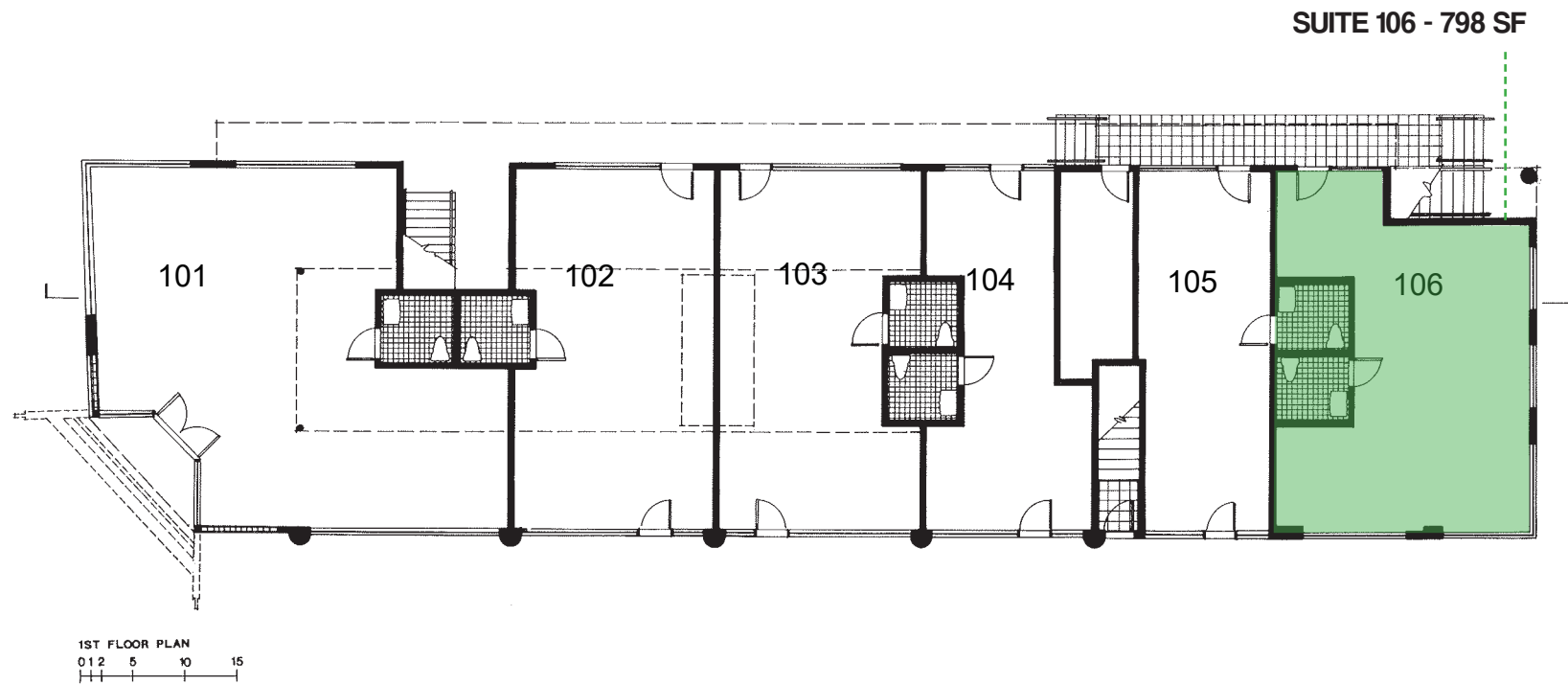
1501 MAIN STREET, VENICE, CA 90291





LEASE  
GROUND FLOOR LAYOUT

1501 MAIN STREET, VENICE, CA 90291



**LEASE**  
**SUITE 107 Mezzanine**

1501 MAIN STREET, VENICE, CA 90291

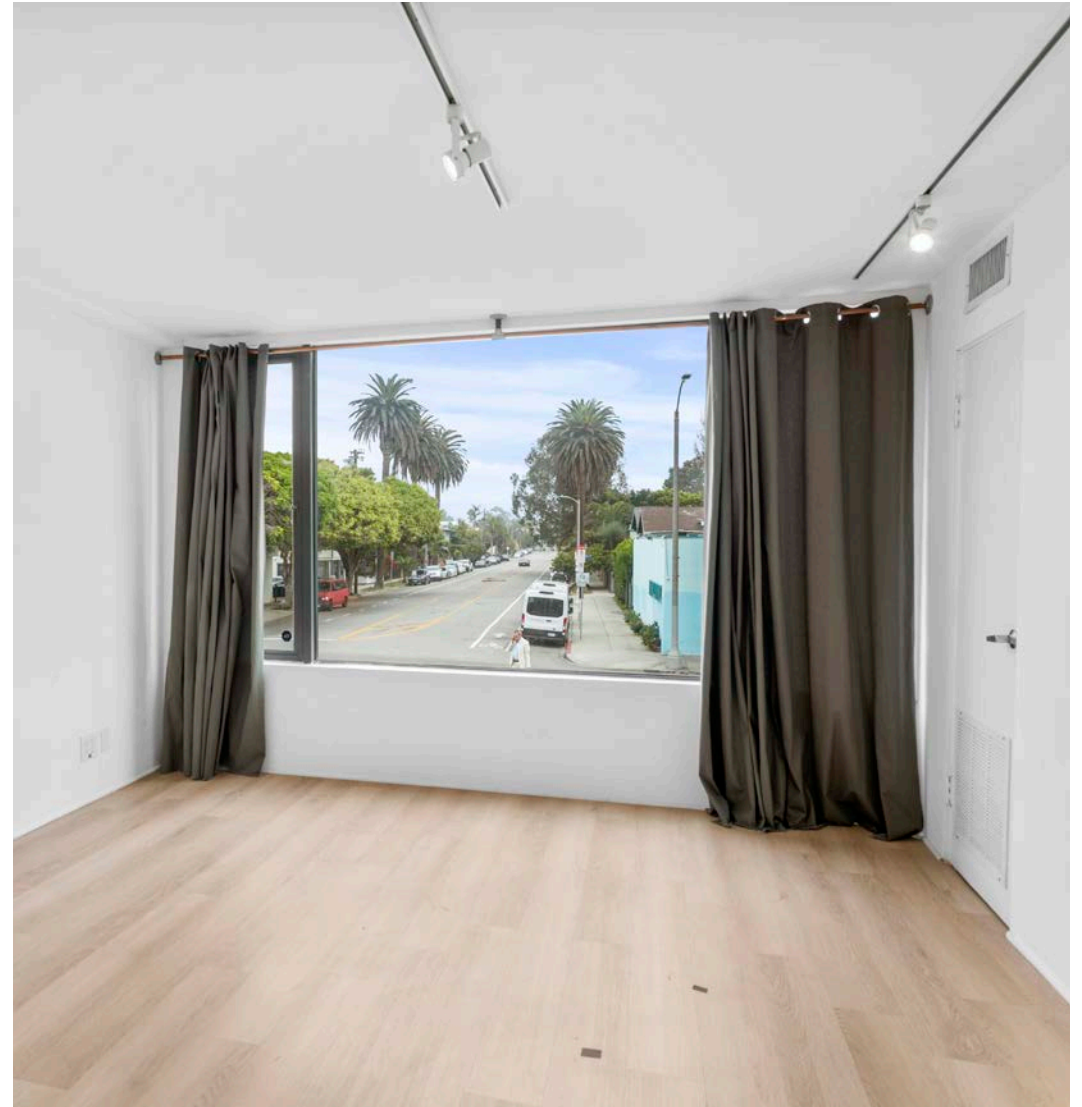


**ZACUTOGROUP.COM | 310.469.9012**



**LEASE**  
**SUITE 107 Mezzanine**

1501 MAIN STREET, VENICE, CA 90291





**LEASE**  
**SUITE 205**

1501 MAIN STREET, VENICE, CA 90291





**LEASE**  
**SUITE 205**

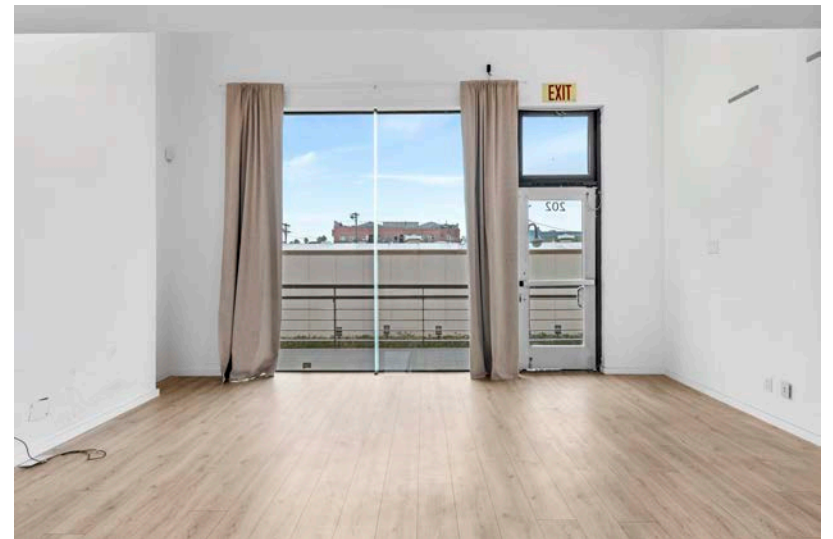
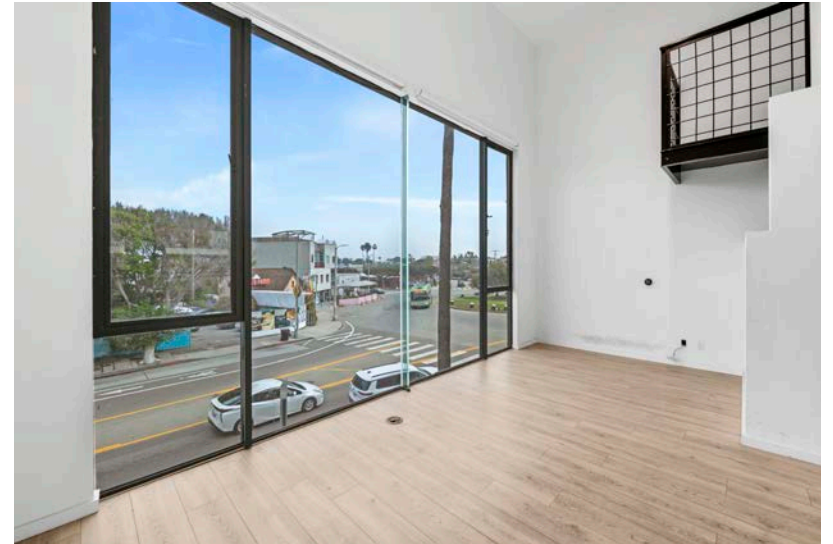
1501 MAIN STREET, VENICE, CA 90291





**LEASE**  
**SUITE 202**

1501 MAIN STREET, VENICE, CA 90291



**ZACUTOGROUP.COM | 310.469.9012**



**LEASE**  
**SUITE 202**

1501 MAIN STREET, VENICE, CA 90291

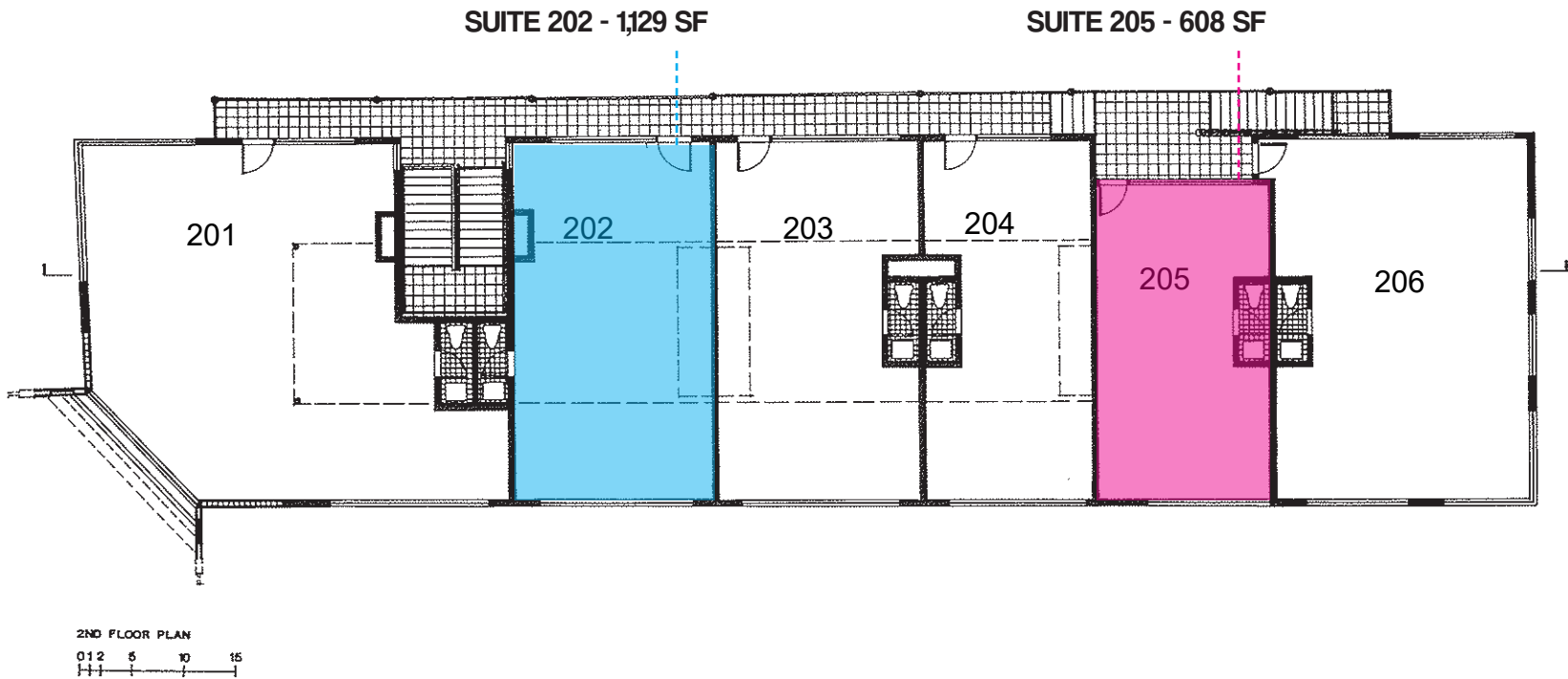




LEASE

1501 MAIN STREET, VENICE, CA 90291

SECOND FLOOR LAYOUT





1501 MAIN STREET, VENICE, CA 90291



*Rare Onsite Parking - Available at \$150/space per month*



LEASE

1501 MAIN STREET, VENICE, CA 90291

## EXCEPTIONAL NEIGHBORS IN THE HEART OF VENICE



📍 GREAT WHITE | 1604 PACIFIC AVE



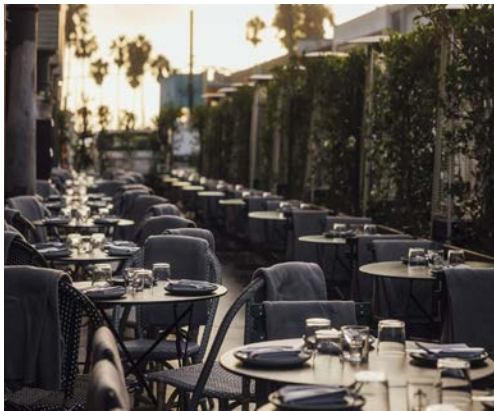
📍 GRAN BLANCO | 80 WINDWARD AVE



📍 JENI'S ICECREAM | 64 WINDWARD AVE



📍 JUSTA GROCER | 105 WINDWARD AVE



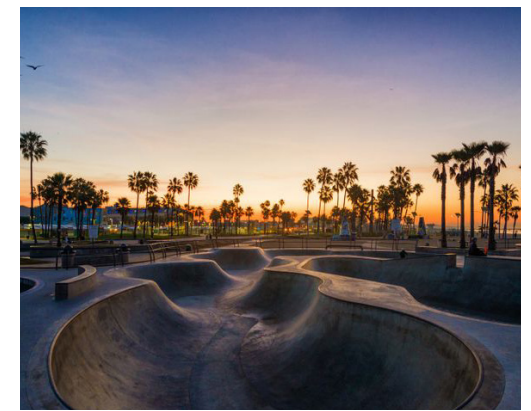
📍 MARKET | 72 MARKET ST



📍 HOTEL ERWIN | 1697 PACIFIC AVE



📍 HUME | 1600 MAIN ST



📍 VENICE SKATE | 1800 OCEAN FRONT WALK



ZACUTOGROUP.COM | 310.469.9012





**1501**  
Main Street  
*Venice Beach*



# 1501

**Main Street**  
*Venice Beach*



**ZACUTO GROUP**  
COMMERCIAL REAL ESTATE

**JAKE ZACUTO**

*Managing Director*

310.469.9012

jake@zacutogroup.com

DRE #01377441

**ANDREW SINASOHN**

*Executive Vice President*

310.469.9023

andrew@zacutogroup.com

DRE #01951740

**SAMMY SANTANA**

*Senior Director*

213.807.9798

sammy@zacutogroup.com

DRE #01969450

*No warranty, express or implied, is made as to the accuracy of the information contained herein. This information is submitted subject to errors, omissions, change of price, rental or other conditions, withdrawal without notice. All parties who receive this material should not rely on it, but should use it as a starting point of analysis, and should independently confirm the accuracy of the information contained herein through a due diligence review of the books, records, files and documents that constitute reliable sources of the information described herein. Logos and images are for identification purposes only and may be trademarks of their respective companies. All terms provided are approximate. Leasee to verify. 12/2025*

**ZACUTOGROUP.COM | 310.469.9300**

