



For Lease | +/- 813 - 1,760 sf  
**Retail Space in  
 Taft Hills Plaza**

1044 Kern St | Taft, CA 93268

**JJ Woods, CLS**  
 Senior Vice President | Principal  
 License No. 01420570  
 +1 661 631 3807  
 jj.woods@colliers.com

**Garret Tuckness, CLS**  
 Senior Vice President | Principal  
 License No. 01323185  
 +1 661 631 3811  
 garret.tuckness@colliers.com

**Logan Blanton**  
 Associate  
 License No. 02167852  
 +1 661 631 3820  
 logan.blanton@colliers.com

**Colliers International**  
 10000 Stockdale Hwy, Suite 102  
 Bakersfield, CA 93311  
 +1 661 631 3800  
 www.colliers.com/bakersfield

# Property Information

Taft Hills Plaza is Taft's primary grocery-anchored center. It is located at the intersection of Kern Street and N. 10th Street in Taft, California.

## Available:

Suite 1018	± 1,760 sf
Suite 1056	± 1,170 sf
Suite 1068	± 813 sf

## Highlights:

- 93,608 sf grocery-anchored shopping center
- Inline and endcap space available
- 813 sf to 1,760 sf space available
- Easy access from both Kern Street and N. 10th Street
- Major co-tenants:



This document/email has been prepared by Colliers for advertising and general information only. Colliers makes no guarantees, representations or warranties of any kind, expressed or implied, regarding the information including, but not limited to, warranties of content, accuracy and reliability. Any interested party should undertake their own inquiries as to the accuracy of the information. Colliers excludes unequivocally all inferred or implied terms, conditions and warranties arising out of this document and excludes all liability for loss and damages arising there from. This publication is the copyrighted property of Colliers and /or its licensor(s). © 2024. All rights reserved. This communication is not intended to cause or induce breach of an existing listing agreement.

# Site Plan



Suite	Tenant	SF
1004	Autozone (N.A.P.)	5,400
1008	Starbucks	1,950
1012	T-Mobile	2,240
1018	Available	1,760
1032	Anytime Fitness	4,500
1040	Foster's Donuts	1,200
1044	Albertsons	42,728
1048	Ali's C Store	1,950
1052	Sweet Surprise	1,170

Suite	Tenant	SF
1056	Available	1,170
1060	Subway	1,170
1064	Clothing Store	850
1068	Available	813
1072	China One Express	2,665
1076	Rite Aid (N.A.P.)	25,035
1080	Taft Nails	1,200
1092	Safe 1 Credit Union	4,053
Pad	Jack in the Box	2,850

# Aerial



**Population**  
 1 Mile: 11,419  
 3 Mile: 16,560  
 5 Mile: 16,677



**Daytime Population**  
 1 Mile: 10,848  
 3 Mile: 15,081  
 5 Mile: 15,525



**Median Age**  
 1 Mile: 32.5  
 3 Mile: 32.3  
 5 Mile: 32.3



**Businesses**  
 1 Mile: 325  
 3 Mile: 412  
 5 Mile: 428

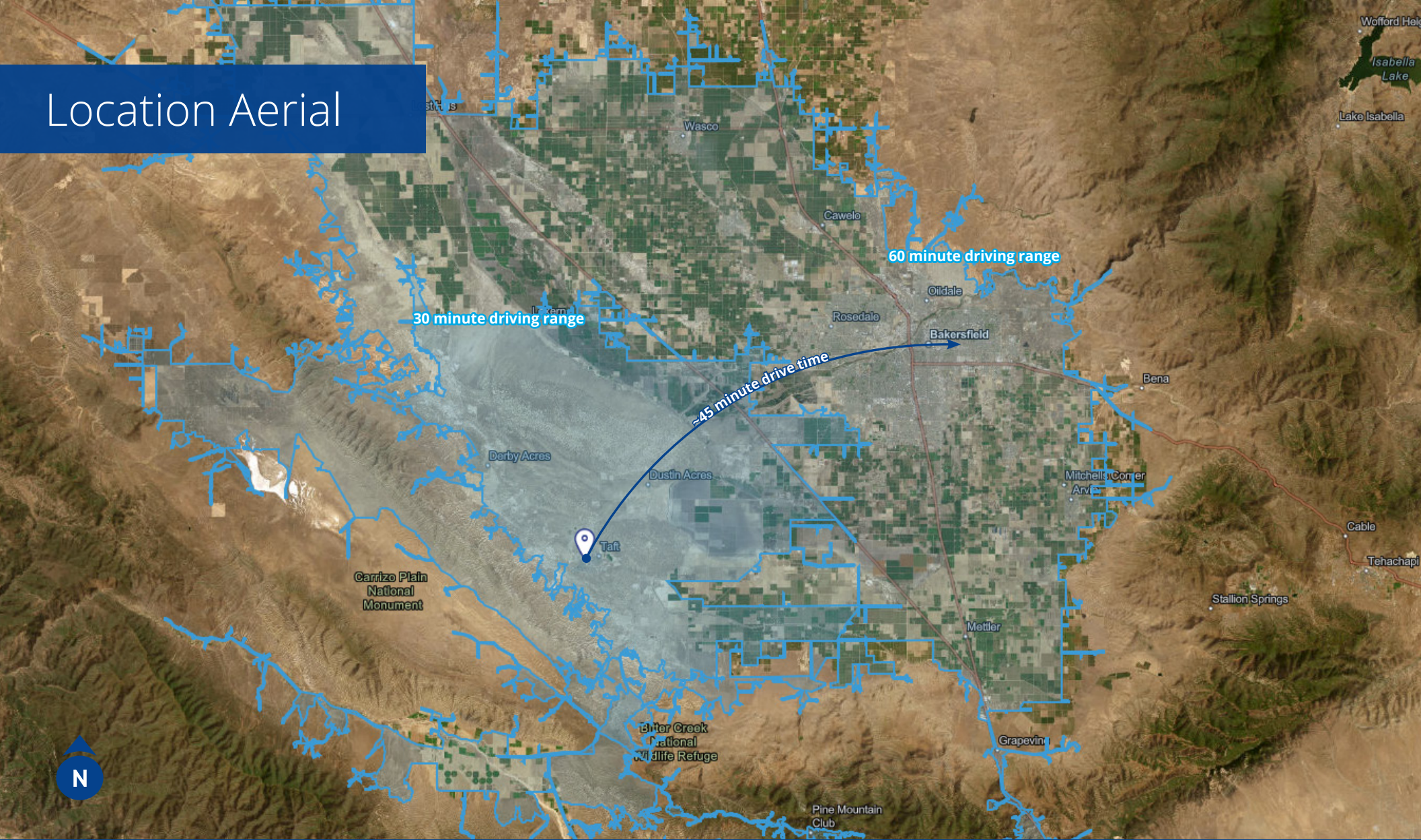


**Average HH Income**  
 1 Mile: \$64,235  
 3 Mile: \$65,241  
 5 Mile: \$65,323



**Households**  
 1 Mile: 3,678  
 3 Mile: 5,112  
 5 Mile: 5,149

# Location Aerial



## Population

1 Mile: 11,419  
3 Mile: 16,560  
5 Mile: 16,677



## Daytime Population

1 Mile: 10,848  
3 Mile: 15,081  
5 Mile: 15,525



## Median Age

1 Mile: 32.5  
3 Mile: 32.3  
5 Mile: 32.3



## Businesses

1 Mile: 325  
3 Mile: 412  
5 Mile: 428



## Average HH Income

1 Mile: \$64,235  
3 Mile: \$65,241  
5 Mile: \$65,323



## Households

1 Mile: 3,678  
3 Mile: 5,112  
5 Mile: 5,149