

TIDWELL RD

HOUSTON, TX



**KRISTEN MCDADE**  
Managing Director  
+ 1 713 331 1796  
kristen.mcdade@cushwake.com

**MATTHEW DAVIS**  
Senior Director  
+ 1 713 331 1798  
matthew.davis@cushwake.com

**MELISSA ELIZONDO**  
Brokerage Specialist  
+1 346 396 4008  
melissa.elizondo@cushwake.com

2025

# GREATER HOUSTON MARKETPLACE

## WHY HOUSTON:

**6.8M**

Residents in the City of Houston

**25**

Fortune 500 Companies

**#3**

among US Metro Areas in Fortune 500 Headquarters

**#5**

in the US in Fortune 1000 headquarters

**55M sq ft**

of Class A space

**160k**

Business establishments

**4th** Largest U.S. City

+ At 665 square miles, the City of Houston is larger in area than the cities of Chicago, Dallas, Los Angeles, New York, Phoenix and San Diego.

**#2** Fastest growing MSA in the U.S.

+ 3,360,800 Jobs in Houston MSA

GLOBAL TRADE CITY

**1st** in Foreign Waterborne Tonnage

**1st** in Gulf Coast Container Port

**1st** in Import and Export

**73** Foreign Owned Firms

## DEMOGRAPHICS

(within 2 mile of E Tidwell Rd, Houston, TX 77078)



**25,976**

2024 Total Population



**\$63,748**

2024 Average Household Income



**\$229,640**

2024 Average Home Value



ENERGY CAPITAL OF THE WORLD



PORT OF HOUSTON



WORLD'S LARGEST MEDICAL CENTER



NASA



CLUTCH CITY

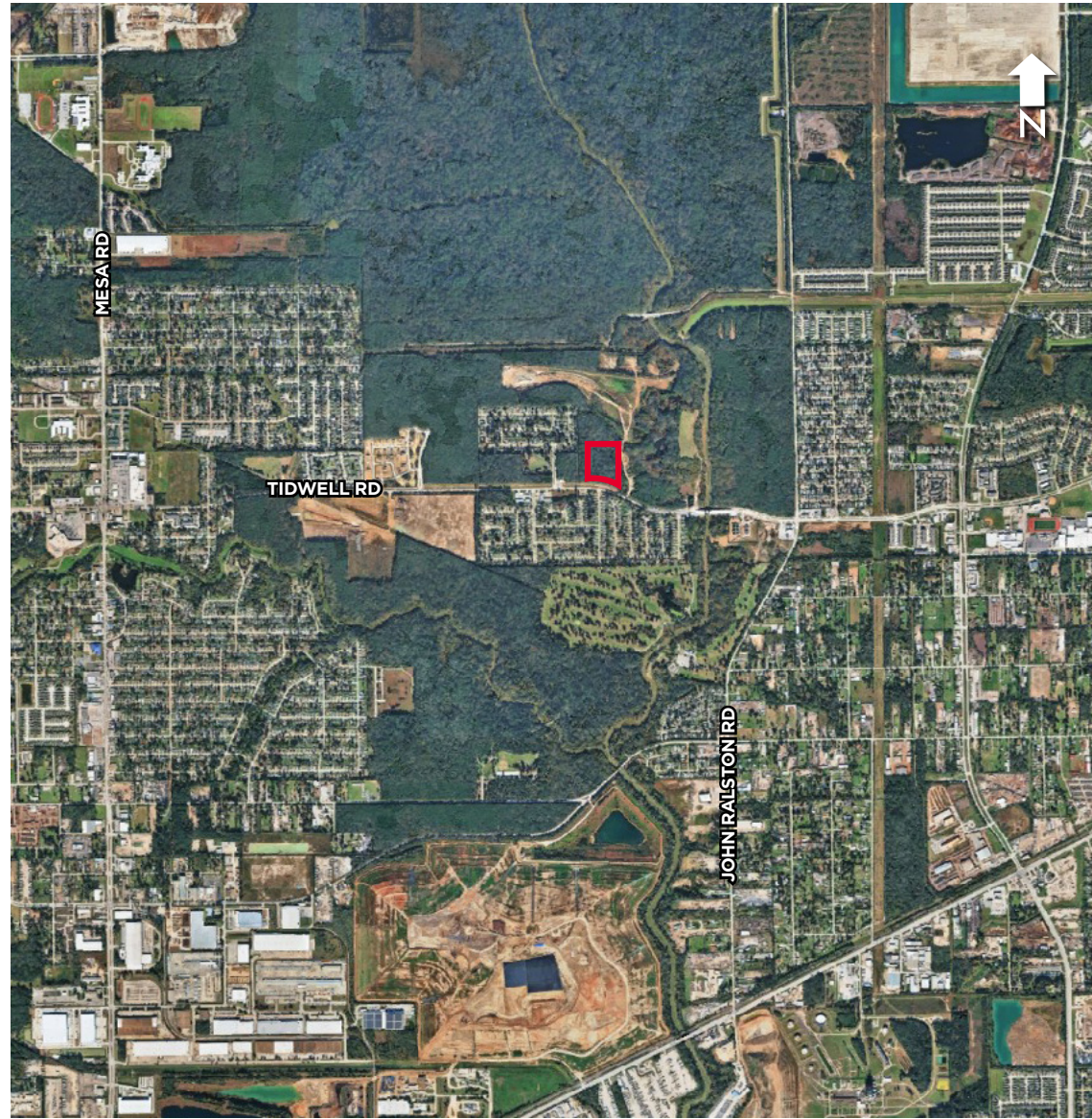
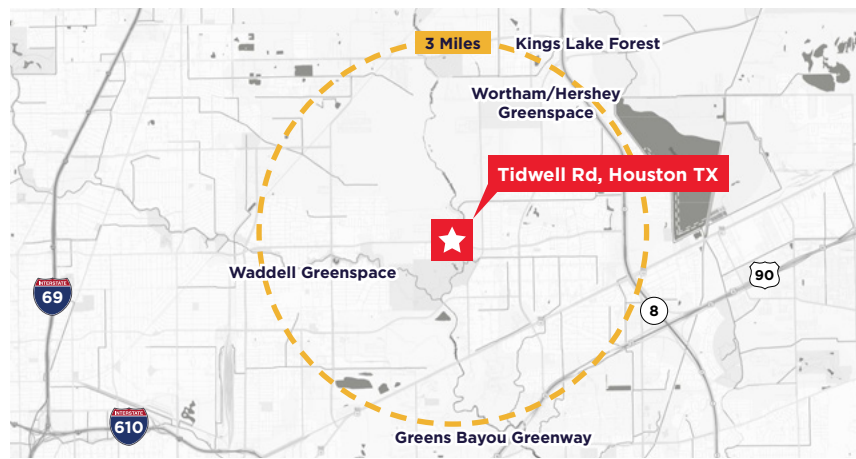
# TIDWELL RD

## HOUSTON, TX

### Property Highlights

- ±9.9392 Gross Acres of Unimproved Land
- Located in East Houston - Super Neighborhood #49
- Contains both 100-year and 500-year floodplain areas
- Includes wetlands (Freshwater Forested/Shrub Wetland/Riverine)
- Located in Opportunity Zone
- Excellent frontage along Tidwell with strong access

APN: 0421930000013



**KRISTEN MCDADE**  
Managing Director  
+1 713 331 1796  
kristen.mcdade@cushwake.com

**MATTHEW DAVIS**  
Senior Director  
+1 713 331 1798  
matthew.davis@cushwake.com

**MELISSA ELIZONDO**  
Brokerage Specialist  
+1 346 396 4008  
melissa.elizondo@cushwake.com

**CUSHMAN & WAKEFIELD**

1330 Post Oak Blvd, Suite 2600 Houston, TX  
www.cushmanwakefield.com

