



McHENRY ROW OFFICE SUITE

1801 PORTER STREET | BALTIMORE, MARYLAND 21230

FOR
SUBLEASE



MACKENZIE

COMMERCIAL REAL ESTATE SERVICES, LLC

PROPERTY OVERVIEW

HIGHLIGHTS:

- 4,826 SF \pm 2nd floor office suite with Class A+ finishes and abundant windows/natural light
- Walkable to the many nearby amenities of McHenry Row and Locust Point
- Free covered parking
- Adjacent to Courtyard Marriott
- Easy access to I-95
- Short drive to Downtown Baltimore



AVAILABLE:

4,826 SF \pm (2ND FLOOR)

PARKING:

FREE & COVERED

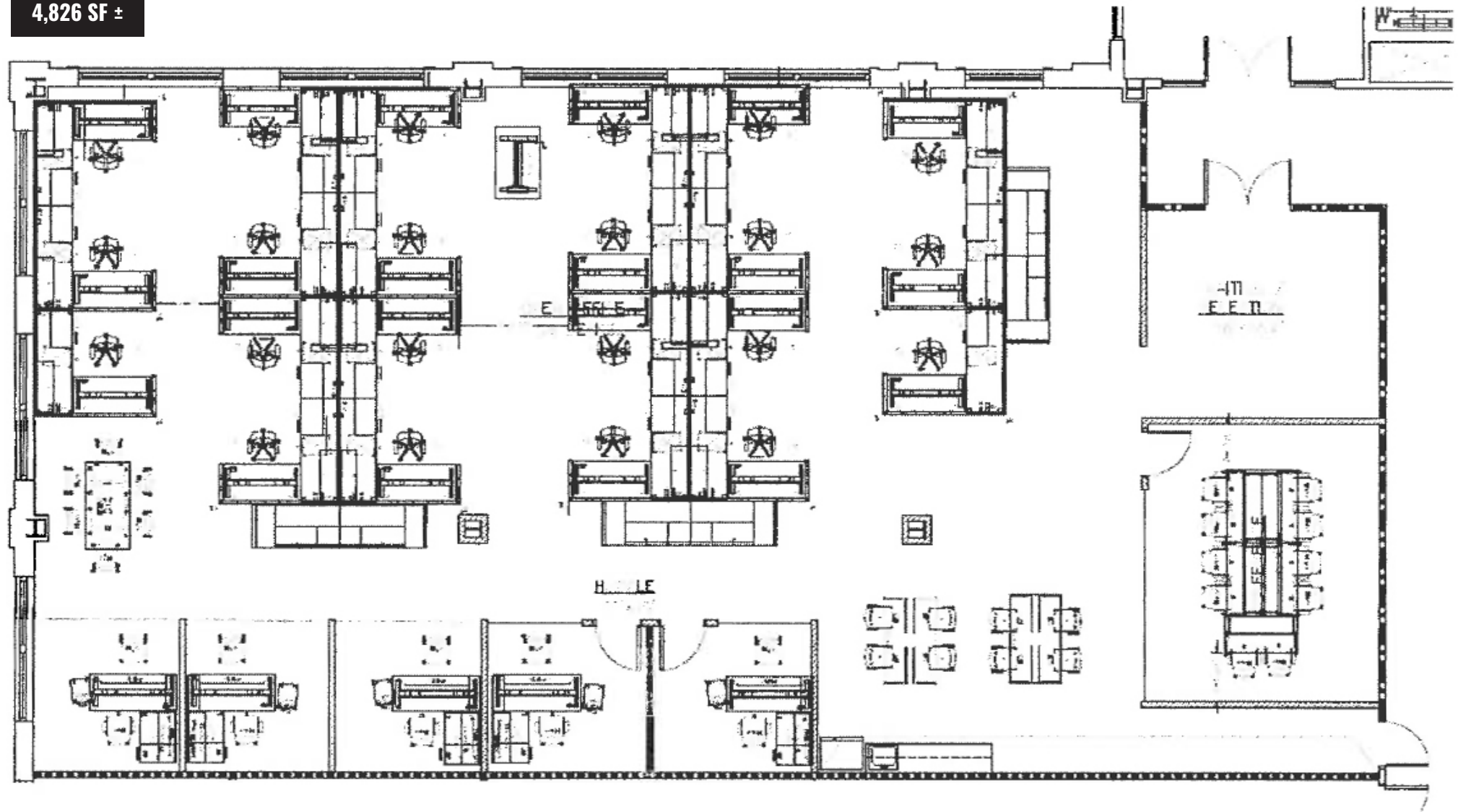
TERM:

NEGOTIABLE

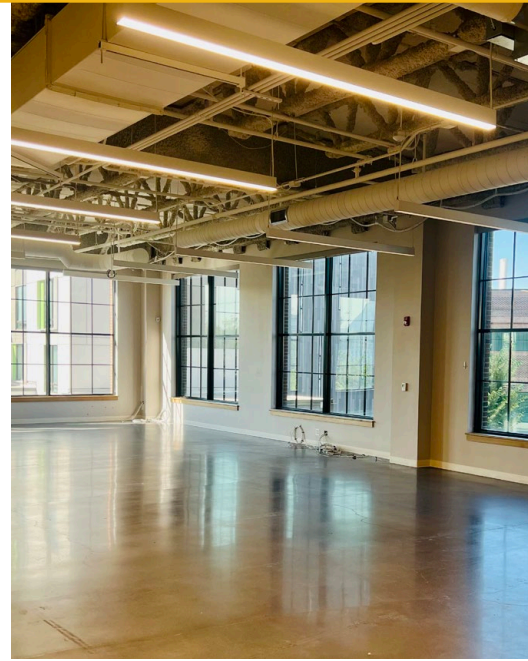
RENTAL RATE:

\$25.00 PSF, FULL SERVICE

4,826 SF ±



INTERIOR PHOTOS



LOCAL BIRDSEYE



BALTIMORE

SITE

INTERSTATE
95



FOR MORE INFO **CONTACT:**



MATTHEW CURRAN, SIOR

SENIOR VICE PRESIDENT & PRINCIPAL

443.573.3203

MCURRAN@mackenziecommercial.com



MARK DEERING

SENIOR VICE PRESIDENT & PRINCIPAL

443.573.3201

MDEERING@mackenziecommercial.com



MACKENZIE

COMMERCIAL REAL ESTATE SERVICES, LLC

443-573-3200

111 S. Calvert Street
Baltimore, MD 21202

OFFICES IN: ANNAPOLIS, MD **BALTIMORE, MD** BEL AIR, MD COLUMBIA, MD LUTHERVILLE, MD CHARLOTTESVILLE, VA

www.MACKENZIECOMMERCIAL.com



VISIT **PROPERTY PAGE** FOR MORE INFORMATION.

No warranty or representation, expressed or implied, is made as to the accuracy of the information contained herein, and same is submitted subject to errors, omissions, change of price, rental or other conditions, withdrawal without notice, and to any specific listing conditions imposed by our principals.