

# Ignite Growth *with* Advanced Manufacturing Opportunities *on* Mare Island



Mare  
Island  
Co.

*Building 253*  
**575 CONNOLLY STREET**

Jones Lang LaSalle Brokerage, Inc. · Real Estate License #: 01856260



# Building 253

26,858 RSF

575 CONNOLLY ST.



**TOTAL SF:**  
26,858 SF



**BEST USES:**  
Warehousing, light  
manufacturing / assembly



**POWER:**  
1,000 amps at 280/120v  
Single Phase



**TOTAL OFFICE SF:**  
224 SF



**WATER:**  
Sprinklered



**YARD:**  
Adjacent Yard

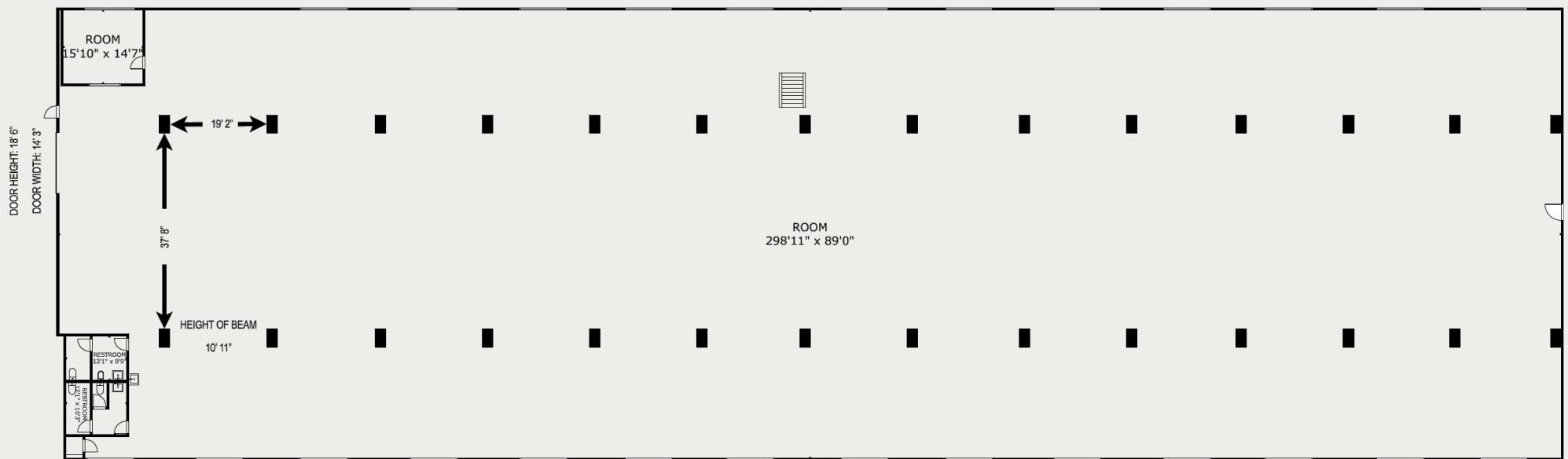


**FLOOR:**  
Concrete slab on  
grade



# Building 253

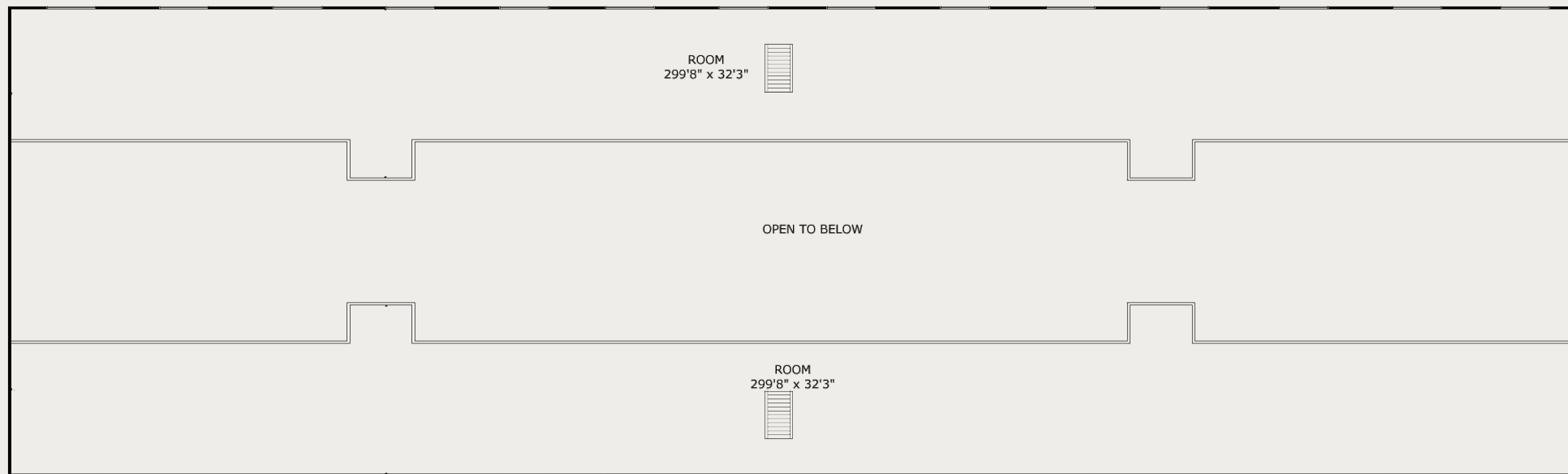
## FIRST FLOOR PLAN





# Building 253

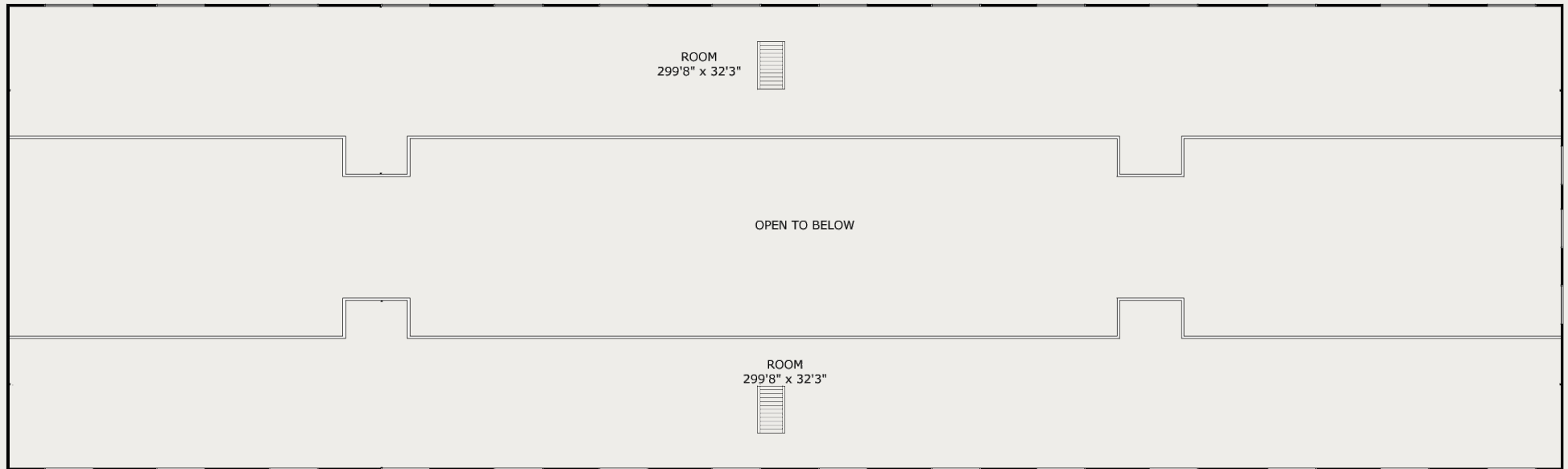
## SECOND FLOOR PLAN





# Building 253

## THIRD FLOOR PLAN











## LEASING TEAM:

### MATT BRACCO

Senior Managing Director

[matt.bracco@jll.com](mailto:matt.bracco@jll.com)

+1 925 948 1305

CA Lic. #0118543

### GREG MATTER

Executive Managing Director

[greg.matter@jll.com](mailto:greg.matter@jll.com)

+1 650 480 2220

CA Lic. #0138073

### KRISTI CHILDERS

Managing Director

[kristi.childers@jll.com](mailto:kristi.childers@jll.com)

+1 510 812 2878

CA Lic. #0199704

### CHRIS BURNS

Managing Director

[christopher.burns@jll.com](mailto:christopher.burns@jll.com)

+1 925 389 0292

CA Lic. #01880060

### CHRIS NEEB

Managing Director

[chris.neeb@jll.com](mailto:chris.neeb@jll.com)

+1 707 495 7777

CA Lic. #01324612

Mare  
Island  
Co.

### NATHAN NIEBERGALL

Director of Leasing

CA Lic. #01967005

Mare Island Co.

[Nathan.Niebergall@mareislandco.com](mailto:Nathan.Niebergall@mareislandco.com)

[www.mareislandco.com](http://www.mareislandco.com)

Although information has been obtained from sources deemed reliable, neither Owner nor JLL makes any guarantees, warranties or representations, express or implied, as to the completeness or accuracy as to the information contained herein. Any projections, opinions, assumptions or estimates used are for example only. There may be differences between projected and actual results, and those differences may be material. The Property may be withdrawn without notice. Neither Owner nor JLL accepts any liability for any loss or damage suffered by any party resulting from reliance on this information. If the recipient of this information has signed a confidentiality agreement regarding this matter, this information is subject to the terms of that agreement.  
© 2024 Jones Lang LaSalle IP, Inc. All rights reserved.