

Industrial Property For Lease

620 PROGRESS AVE, MUNSTER, IN 46321



For more information, please contact:

BRETT MCDERMOTT, CCIM

Co-Founder/Senior Vice President

219.864.0200

bmcdermott@latitudeco.com

MYLES RAPCHAK

Principal/Vice President

219.864.0200

mrapchak@latitudeco.com

JOHN O'MALLEY

Associate Broker

219.864.0200

jomalley@latitudeco.com



LATITUDE
COMMERCIAL
REAL ESTATE SERVICES

LATITUDECO.COM

620 PROGRESS AVE

Munster, IN 46321



EXECUTIVE SUMMARY



OFFERING SUMMARY

Available SF:	2,983 - 6,014 SF
Lease Rate:	\$14.00 SF/yr (NNN)
Lot Size:	1.03 Acres
Year Built:	1998
Building Size:	17,294 SF
Renovated:	2025
Zoning:	CD-4.B

PROPERTY HIGHLIGHTS

- 14' high drive-in overhead door in each unit
- 16' clear ceiling height
- Private office space and dedicated restroom in each unit
- Open-span warehouse/shop area with efficient lighting and power
- Ample parking and circulation for vans, box trucks, and small fleets
- Suitable for trades, contractors, distribution, e-commerce, or creative production
- Scheduled Completion: October 1, 2025



BRETT MCDERMOTT, CCIM
Co-Founder/Senior Vice President
219.864.0200
bmcdermott@latitudeco.com

MYLES RAPCHAK
Principal/Vice President
219.864.0200
mrapchak@latitudeco.com

JOHN O'MALLEY
Associate Broker
219.864.0200
jomalley@latitudeco.com

620 PROGRESS AVE

Munster, IN 46321



PROPERTY DESCRIPTION



PROPERTY DESCRIPTION

Now leasing light industrial in Munster, IN located just off Calumet Avenue on Progress Ave. The industrial/flex units are designed to support a wide range of light industrial, service, and small business uses. Each unit offers a 14' grade-level drive-in door, 16' clear ceiling height, and a dedicated office area with private restroom.

LOCATION DESCRIPTION

The subject property is located in an Industrial complex on Progress Avenue in Munster, IN. The property is located just off Calumet Avenue.

Munster is a town located in North Township in Lake County, Indiana. This bedroom community lies in the Chicago metropolitan area, approximately 30 miles southeast of the Chicago Loop, and shares municipal boundaries with Hammond to the North, Highland to the East, Dyer & Schererville to the South and Lansing/Lynwood directly West of the Illinois border. The 2010 U.S. Census count the town's population at 23,603.

BRETT MCDERMOTT, CCIM

Co-Founder/Senior Vice President
219.864.0200
bmcdermott@latitudeco.com

MYLES RAPCHAK

Principal/Vice President
219.864.0200
mrapchak@latitudeco.com

JOHN O'MALLEY

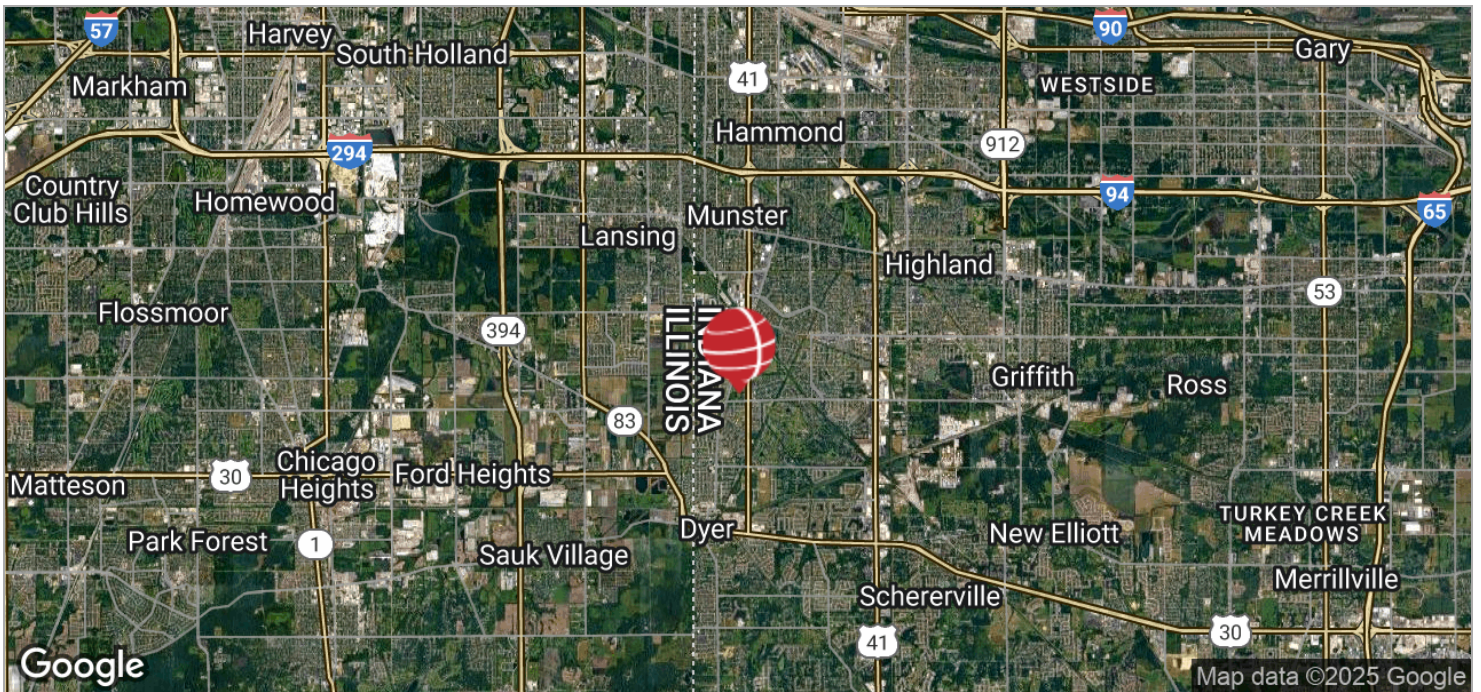
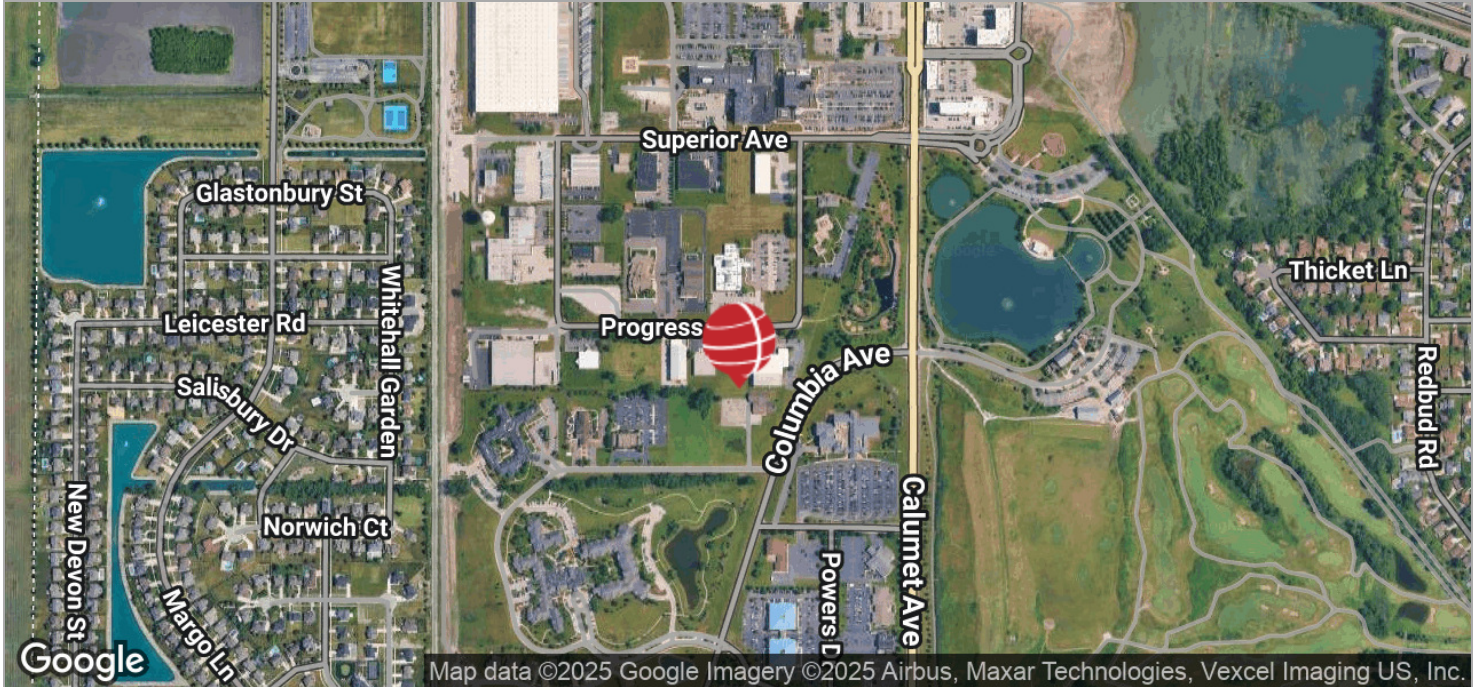
Associate Broker
219.864.0200
jomalley@latitudeco.com

620 PROGRESS AVE

Munster, IN 46321



LOCATION MAPS



BRETT MCDERMOTT, CCIM

Co-Founder/Senior Vice President
219.864.0200
bmcdermott@latitudeco.com

MYLES RAPCHAK

Principal/Vice President
219.864.0200
mrachak@latitudeco.com

JOHN O'MALLEY

Associate Broker
219.864.0200
jomalley@latitudeco.com

• 4 •

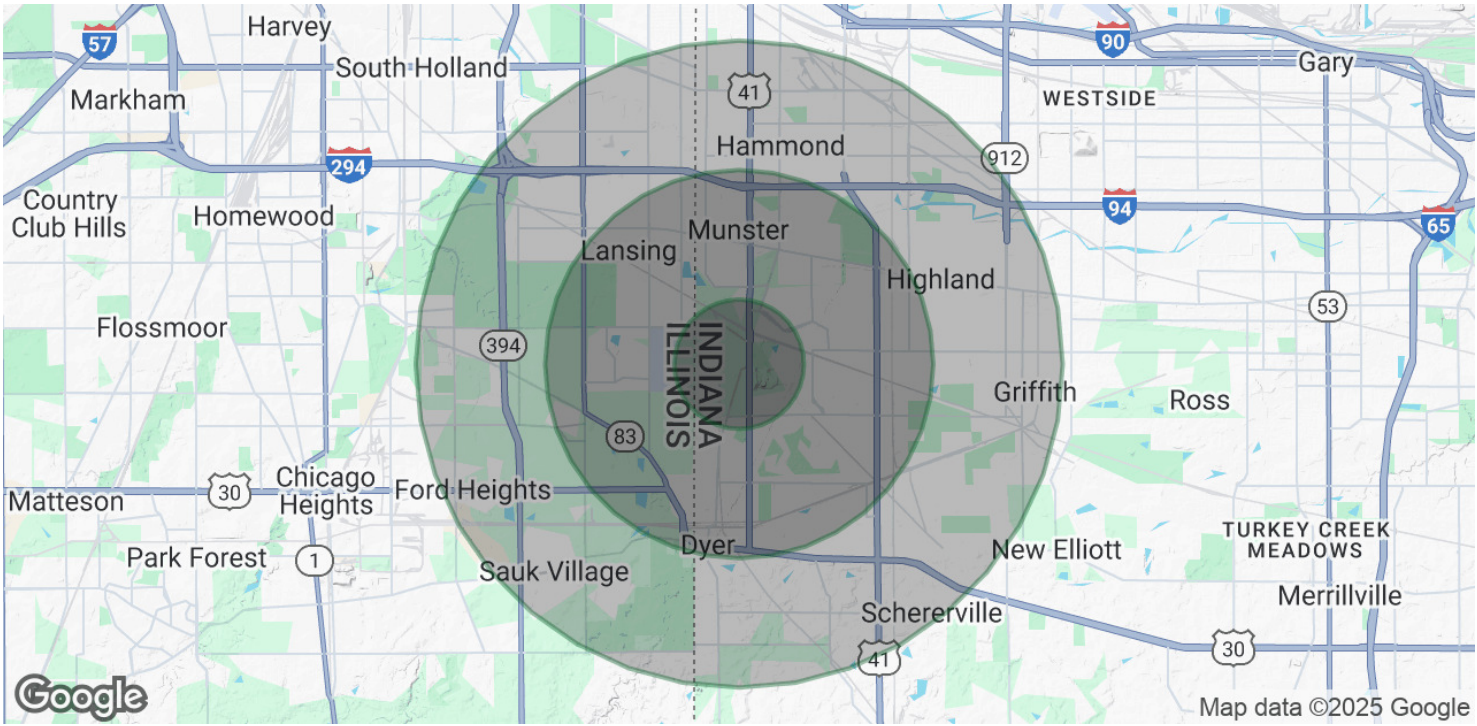
LATITUDECO.COM

620 PROGRESS AVE

Munster, IN 46321



DEMOGRAPHICS MAP & REPORT



POPULATION

	1 MILE	3 MILES	5 MILES
Total Population	5,228	76,168	184,253
Average Age	44	43	42
Average Age (Male)	42	42	40
Average Age (Female)	46	45	43

HOUSEHOLDS & INCOME

	1 MILE	3 MILES	5 MILES
Total Households	1,958	30,929	72,910
# of Persons per HH	2.7	2.5	2.5
Average HH Income	\$152,019	\$108,375	\$94,896
Average House Value	\$469,970	\$292,222	\$248,939

Demographics data derived from AlphaMap

BRETT MCDERMOTT, CCIM
Co-Founder/Senior Vice President
219.864.0200
bmcdermott@latitudeco.com

MYLES RAPCHAK
Principal/Vice President
219.864.0200
mrapchak@latitudeco.com

JOHN O'MALLEY
Associate Broker
219.864.0200
jomalley@latitudeco.com