



# Industrial Building & Commercial Yard

6210-40 Lemay Ferry Rd, Saint Louis, MO 63129

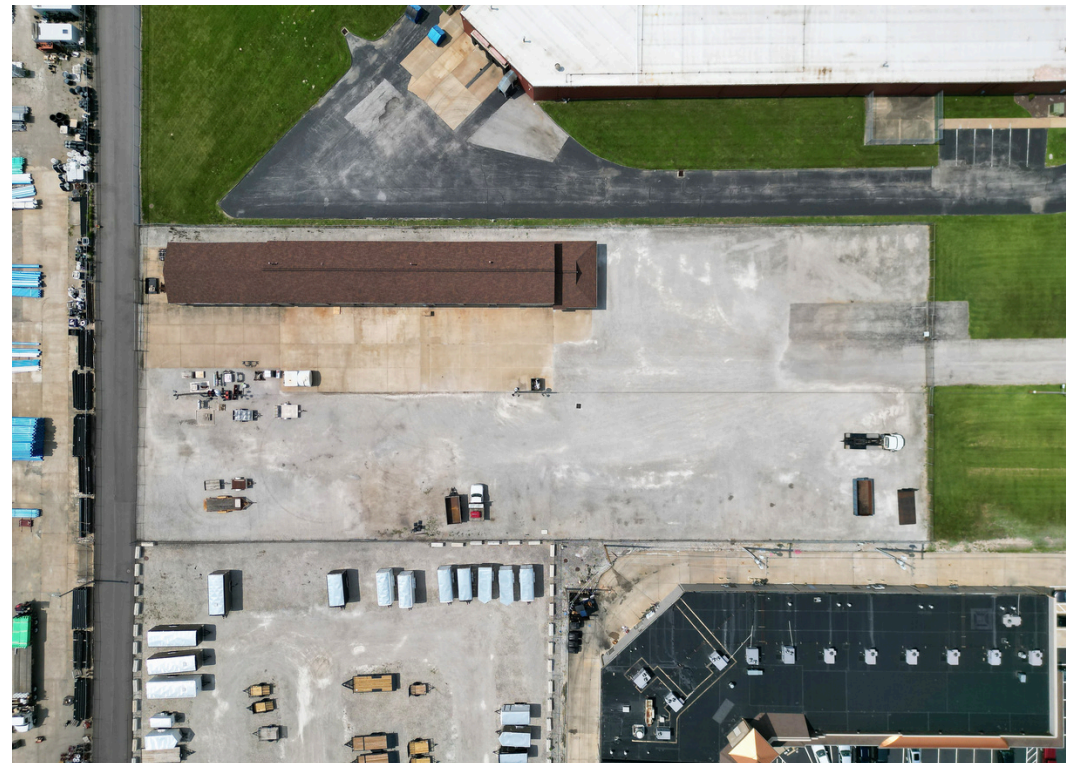
6,400 SF Industrial/Warehouse Space with Office  
2 ± Acres on Two Parcels

**FOR  
SALE**

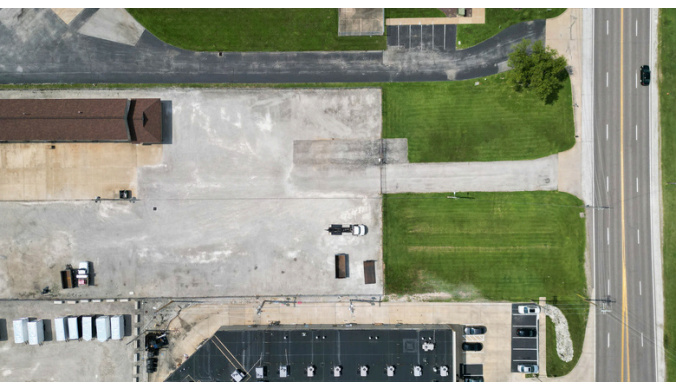


# Property Details

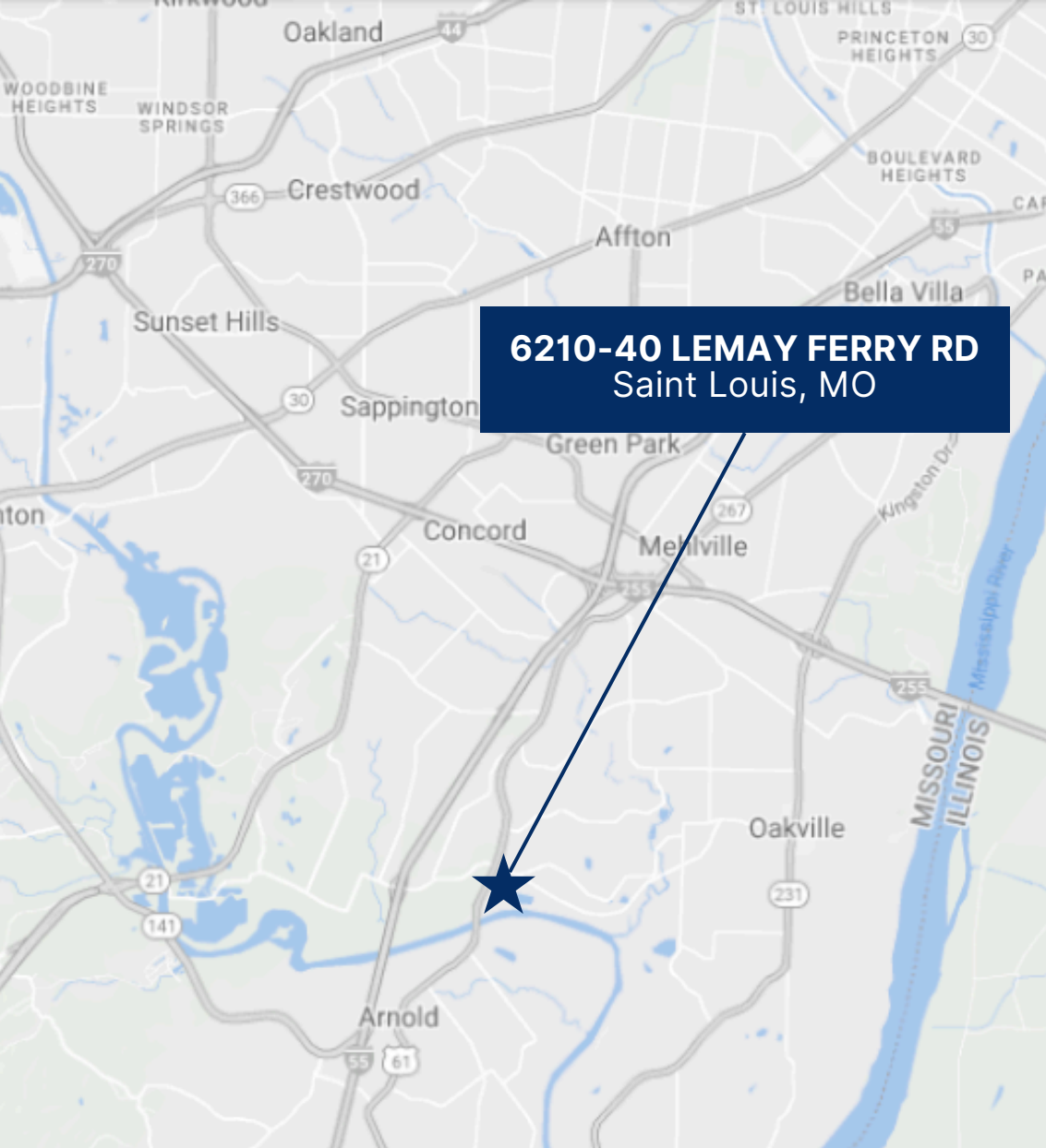
<b>OFFERED AT</b>	\$1,450,000
Current Zoning	Industrial & Commercial
Building Size	6,400± SF
Lot Size	2+ Acres
Year Built	1991
2023 Taxes	\$26,275
Garages	10 Total
14'h x 12'w Doors	7
10'h X 12'w Doors	3
Ceiling Height	15 FT
Utilities	All
Office	1
Conference Room	1
Break Room	1
Bathroom	2
Loft Space	1











**6210-40 LEMAY FERRY RD**  
Saint Louis, MO

# Location

## CLOSE TO AREA HIGHWAYS:

- I-55 < 5 mins
- I-55 & I-270 <10 mins

## POSSIBLE USES:

- Contractors
- Warehousing
- Service Businesses
- Manufacturing
- Car Wash & Detailing
- Self-Storage Facility
- Lawn and Landscape
- Tow Yard
- Restaurant & Banquet Hall
- Indoor/Outdoor Gym
- And More...



Greg Hayden  
LuxRLTY@aol.com  
314 892 5200  
314 363 4939 (call or text)



Emily Cook  
Emily@LuxREco.com  
314 892 5200  
314 202 9312 (call or text)

LuxREco is a Missouri licensed real estate brokerage. Although information has been obtained from sources deemed reliable, neither Owner nor LuxREco makes any guarantee, warranties or representations, express or implied, as to the completeness or accuracy as to the information contained herein. Any projections, opinions, assumptions, or estimates are for example only. There may be differences between projected and actual results, and those differences may be material. The Property may be withdrawn without notice. Neither Owner nor LuxREco accepts any liability for any loss or damage suffered by any party resulting from reliance on this information.