

3098 RESEARCH DRIVE
ROCHESTER HILLS, MICHIGAN

HI-TECH FOR SALE
13,743 Square Feet Available



**SIGNATURE
ASSOCIATES**
KNOW SIGNATURE | KNOW RESULTS

ROCHESTER HILLS EXECUTIVE PARK



PROPERTY FEATURES

- 13,743 square feet available
- 4,000 square feet of office
- 18' clear height
- (2) 12'x14' & (1) 16'x16' grade level doors
- Situated on 1.09 acres
- 1000 amps, 440/277 volts, 3-phase power
- Air-conditioned office and lab
- 5-ton crane footings
- Lease possible
- Sale Price: \$1,785,000 (\$129.99/sq.ft.)



For more information, please contact:

PAUL HOGE
(248) 948 0103
paulhoge@signatureassociates.com

KRIS PAWLOWSKI
(248) 359 3801
kpawlowski@signatureassociates.com

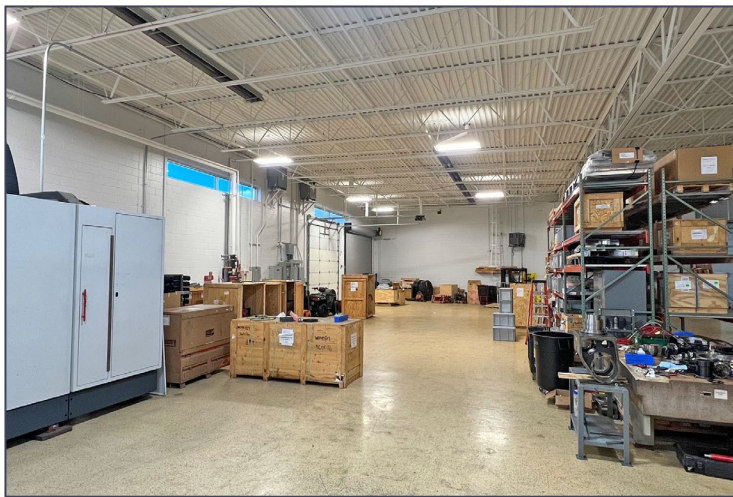
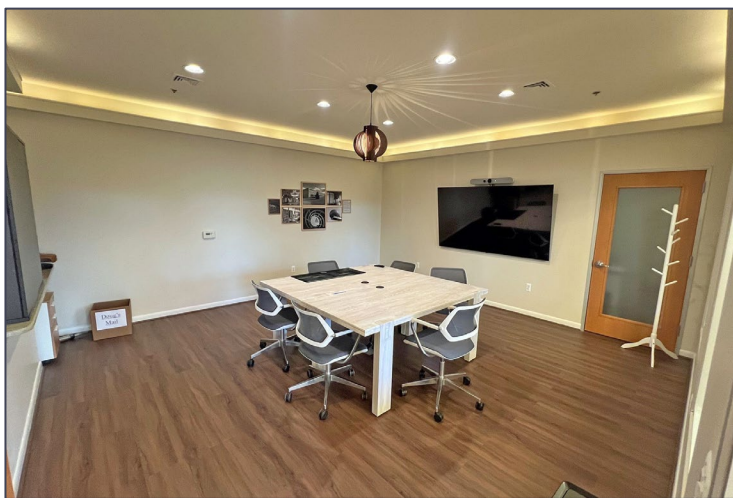
SIGNATURE ASSOCIATES
One Towne Square, Suite 1200
Southfield, MI 48076
www.signatureassociates.com

3098 Research Drive – Rochester Hills, Michigan

Hi-Tech For Sale

13,743
Square Feet
AVAILABLE

Interior Photos



For more information, please contact:

PAUL HOGE
(248) 948 0103
paulhoge@signatureassociates.com

KRIS PAWLOWSKI
(248) 359 3801
kpawlowski@signatureassociates.com

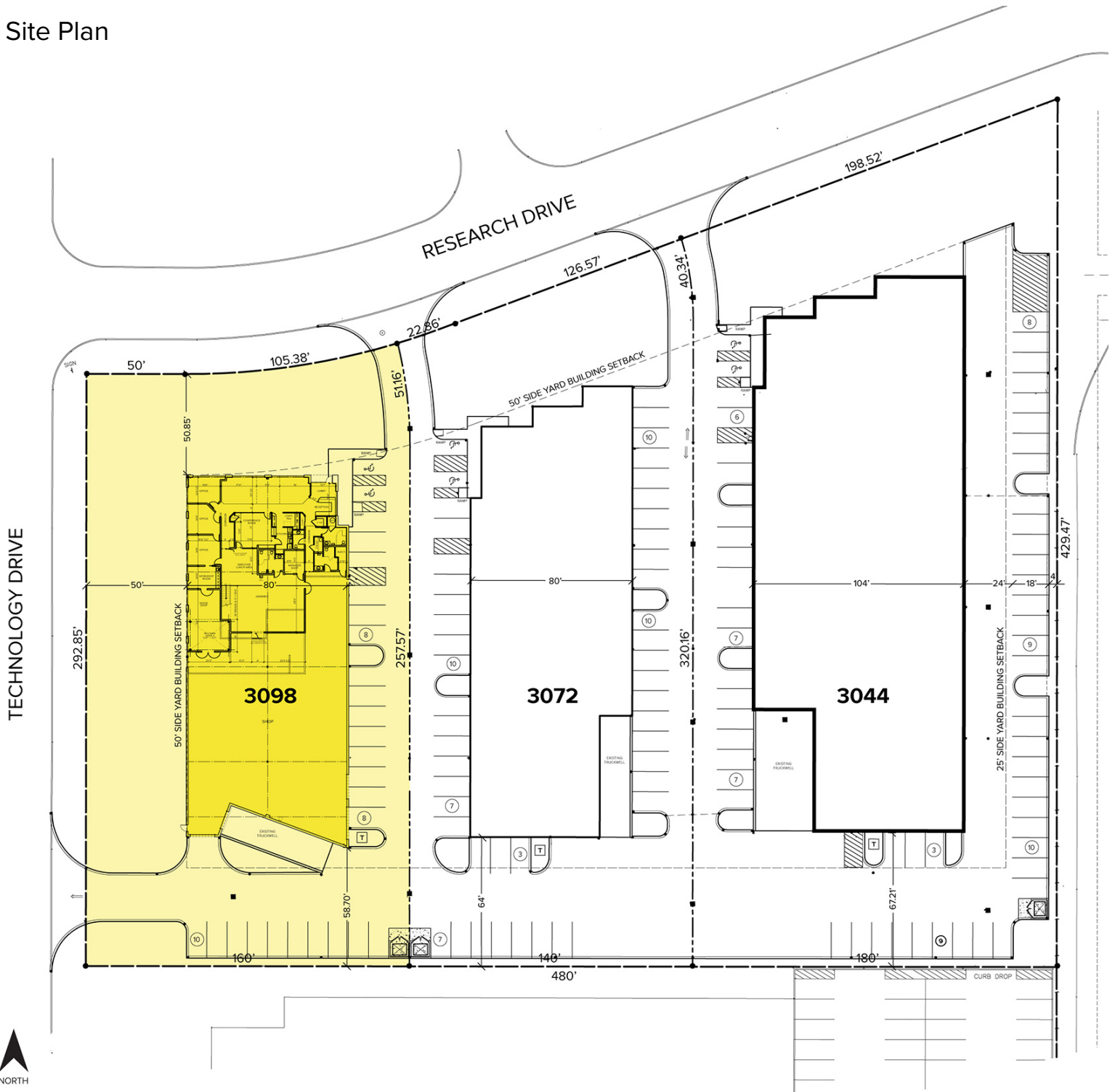
SIGNATURE ASSOCIATES
One Towne Square, Suite 1200
Southfield, MI 48076
www.signatureassociates.com

3098 Research Drive – Rochester Hills, Michigan

Hi-Tech For Sale

13,743
Square Feet
AVAILABLE

Site Plan



For more information, please contact:

PAUL HOGE
(248) 948 0103
paulhoge@signatureassociates.com

KRIS PAWLOWSKI
(248) 359 3801
kpawlowski@signatureassociates.com

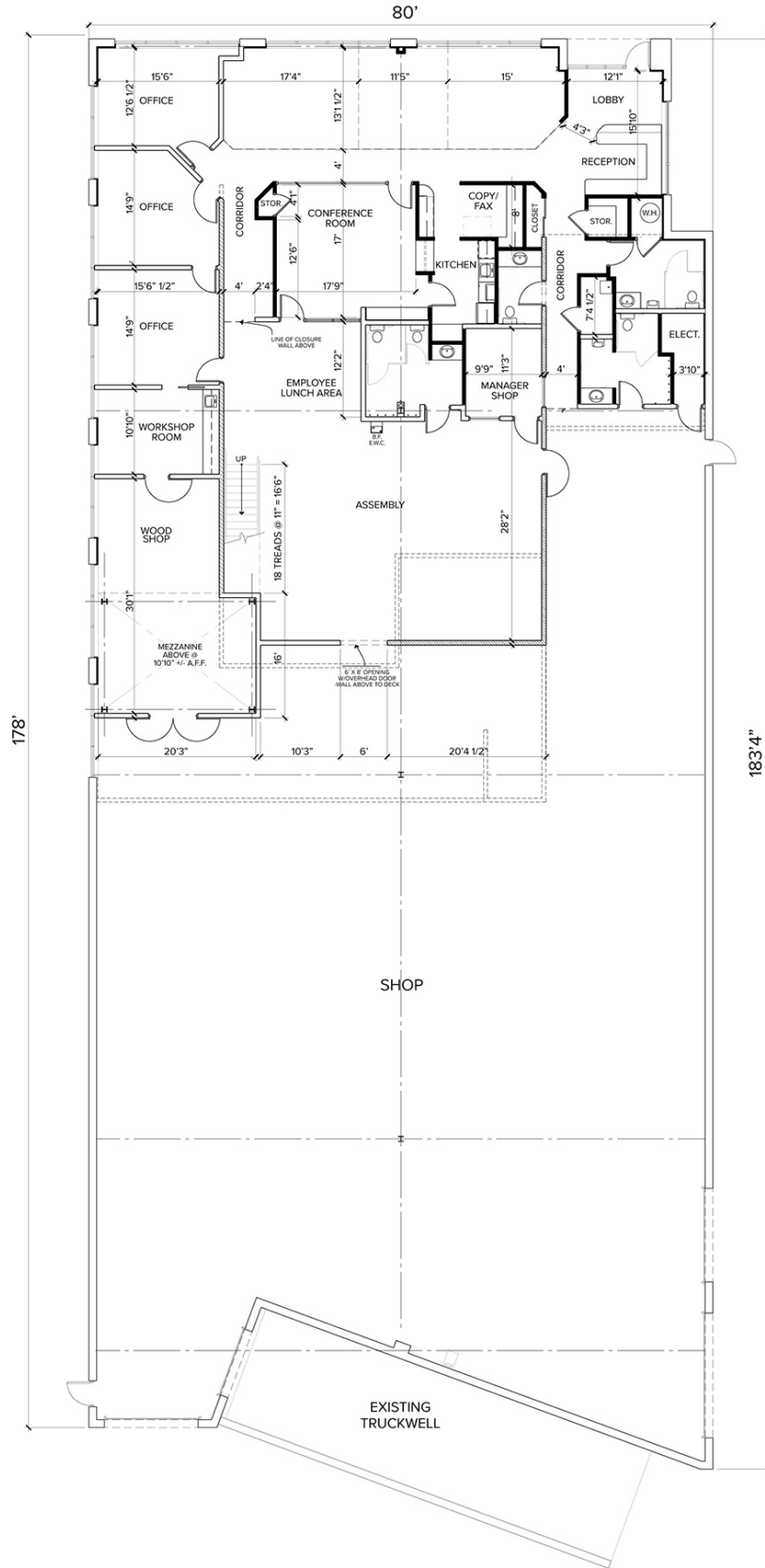
SIGNATURE ASSOCIATES
One Towne Square, Suite 1200
Southfield, MI 48076
www.signatureassociates.com

3098 Research Drive – Rochester Hills, Michigan

Hi-Tech For Sale

13,743
Square Feet
AVAILABLE

Floor Plan



For more information, please contact:

PAUL HOGE
(248) 948 0103
paulhoge@signatureassociates.com

KRIS PAWLOWSKI
(248) 359 3801
kpawlowski@signatureassociates.com

SIGNATURE ASSOCIATES
One Towne Square, Suite 1200
Southfield, MI 48076
www.signatureassociates.com

3098 Research Drive – Rochester Hills, Michigan

Hi-Tech For Sale

13,743
Square Feet
AVAILABLE

Aerial



For more information, please contact:

PAUL HOGE
(248) 948 0103
paulhoge@signatureassociates.com

KRIS PAWLOWSKI
(248) 359 3801
kpawlowski@signatureassociates.com

SIGNATURE ASSOCIATES
One Towne Square, Suite 1200
Southfield, MI 48076
www.signatureassociates.com