

Retail/Office For Lease



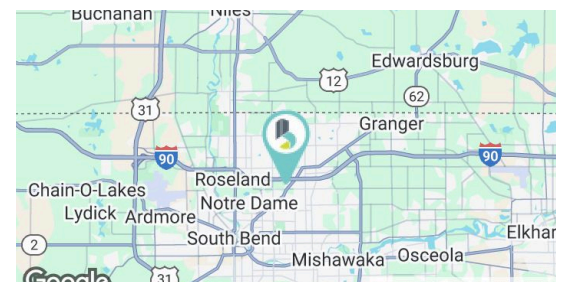
231 W Day Rd.

Mishawaka, IN 46545

Property Highlights

- 4,794 SF standalone former medical office with high-end Class A finishes
- Move-in ready medical layout with reception, exam rooms, procedure space, and private offices
- Efficient floor plan allows easy conversion to general office or other professional uses
- Prime Mishawaka location in the Grape Road retail corridor with strong surrounding national tenancy
- Excellent visibility, signage opportunities, and consistent daily traffic along W Day Road
- Convenient access to Main Street, SR 23, and the I-80/90 Toll Road
- Close proximity to major healthcare systems and the Edison Lakes and Downtown South Bend office markets

Lease Rate	\$22.50 (NNN)
Building Size (SF)	4,794 SF
Zoning	C-2
Traffic Count	ADT 6,282 (W Day Rd.) ADT 23,459 (N Main. St)



Gage Hudak, CCIM
ghudak@bradleyco.com
c 574.855.5706

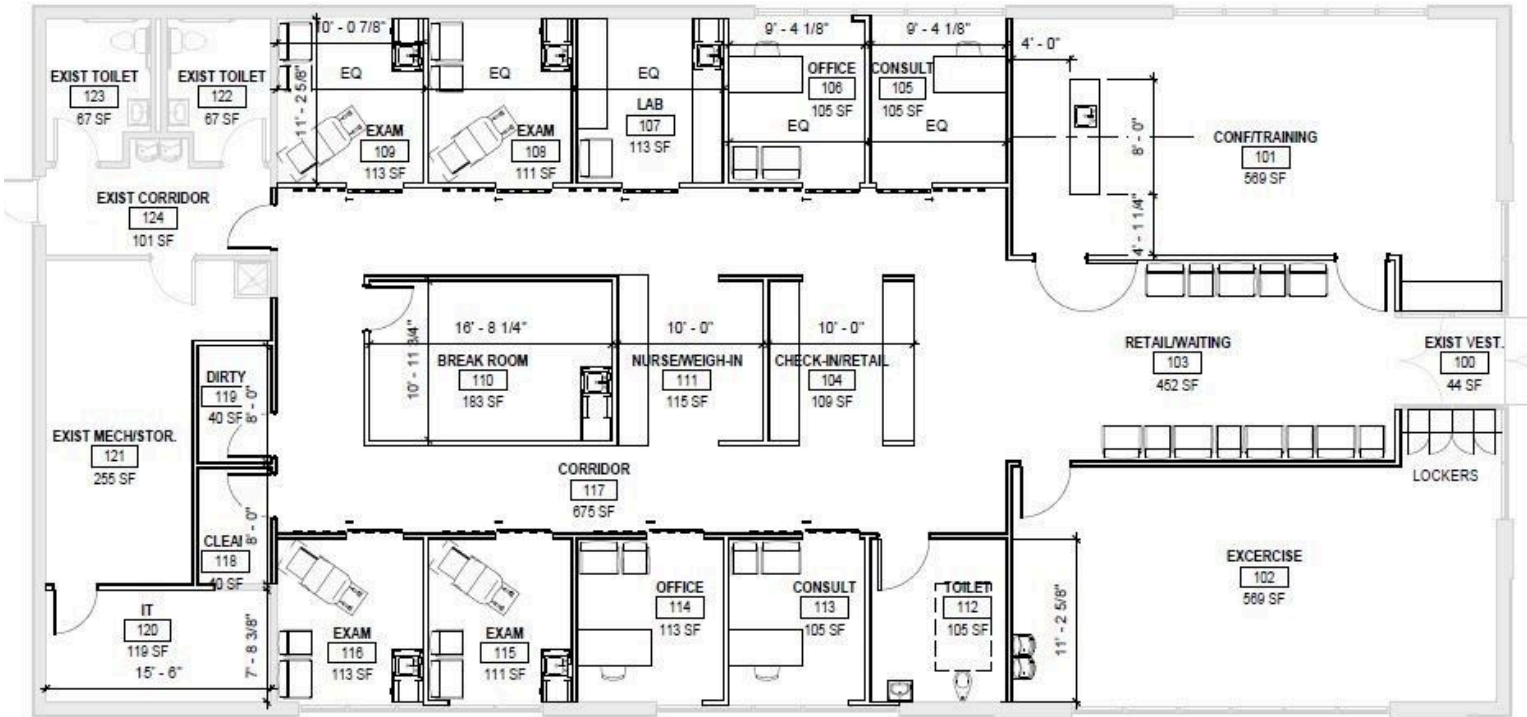
John Jessen
jjessen@bradleyco.com
c 574.968.9270

Rebecca Ward
rward@bradleyco.com
c 574.855.5718

www.bradleyco.com

Floor Plan

231 W Day Rd. Mishawaka, IN 46545



Spaces	Lease Rate	Space Size	Lease Type
Building	\$22.50/SF/Year	4,794 SF	NNN

Additional Photos

231 W Day Rd. Mishawaka, IN 46545



Retailer Map

