

±35,400 SF on 1.63 AC INDUSTRIAL OPPORTUNITY FOR LEASE

354-370 + 363-367 South Jefferson Street, Orange, New Jersey



TABLE OF CONTENTS

3

PROPERTY SPECS
354-370 S JEFFERSON

5

PROPERTY SPECS
363-367 S JEFFERSON

7

COMMUTER
RAIL

9

ACCESSIBILITY

10

DEMOGRAPHICS





354-370 South Jefferson Street, Orange, New Jersey

Block 4008 Lot 1

PROPERTY FEATURES

SF:	Building 1	11,592 SF with 1,600 SF of storage mezzanine
	Building 2	3,832 SF
AC:	1.05 AC	
Taxes:	\$39,160.72	



Parking for 35-40 Vehicles



3 Loading Docks/Bays



Ceiling Height 24' – 29'





363-367 South Jefferson Street, Orange, New Jersey

Block 4001 Lot 1

PROPERTY FEATURES

SF:	New	10,268 SF
	Old	9,708 SF

AC: 0.575 AC

Taxes: \$57,963.09



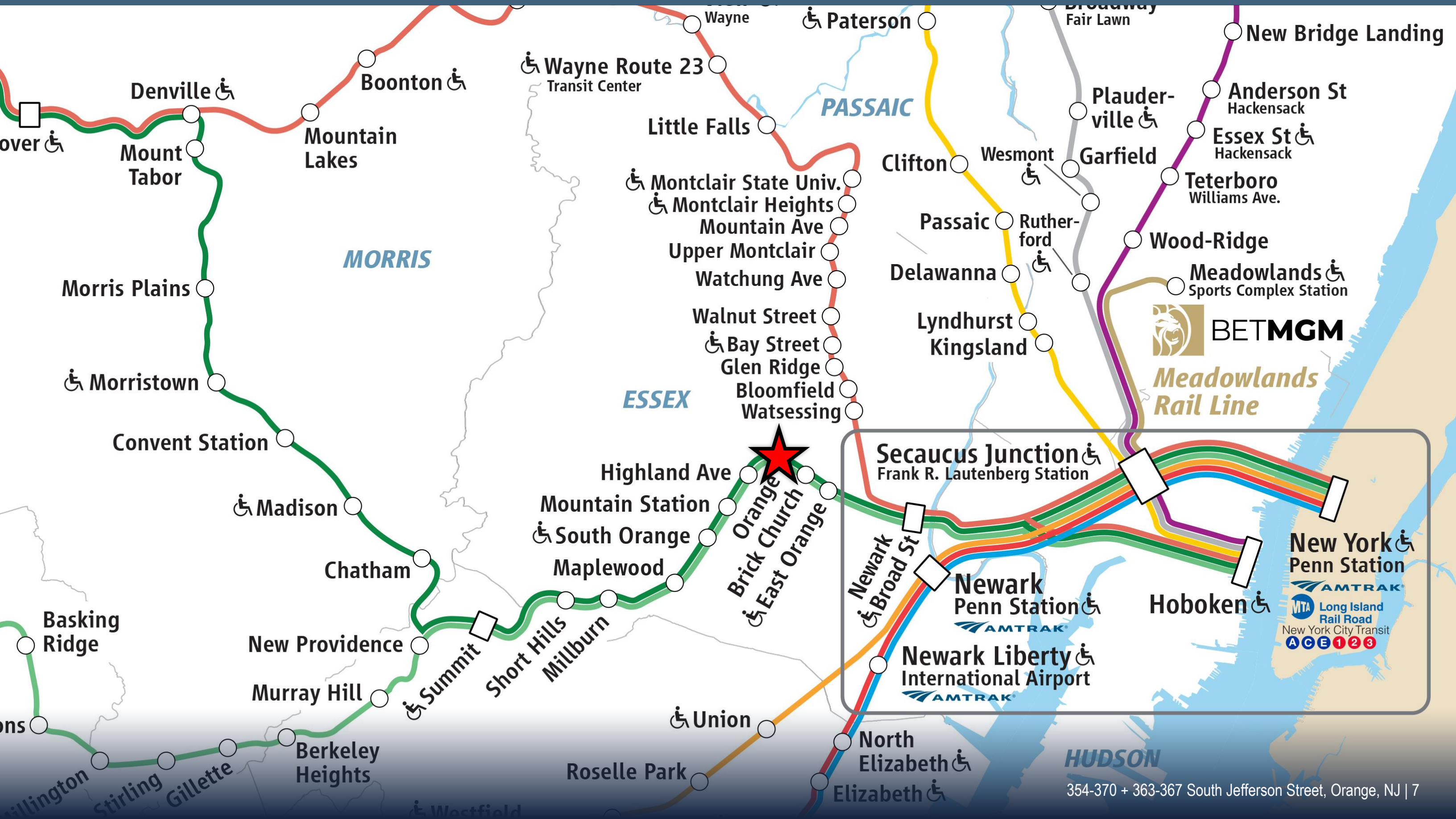
1 Loading
Dock/Bay



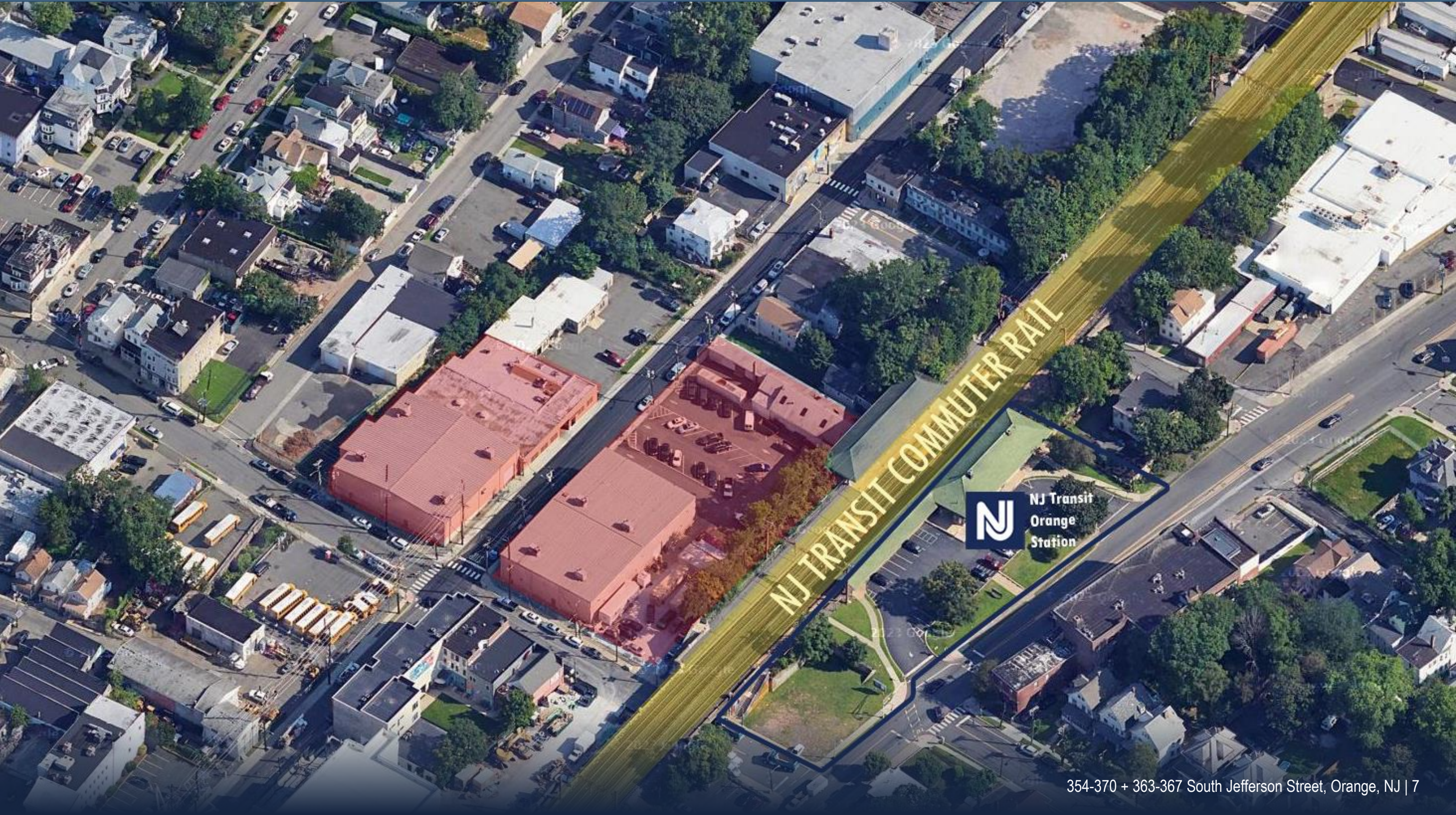
Ceiling Height
12' – 29'



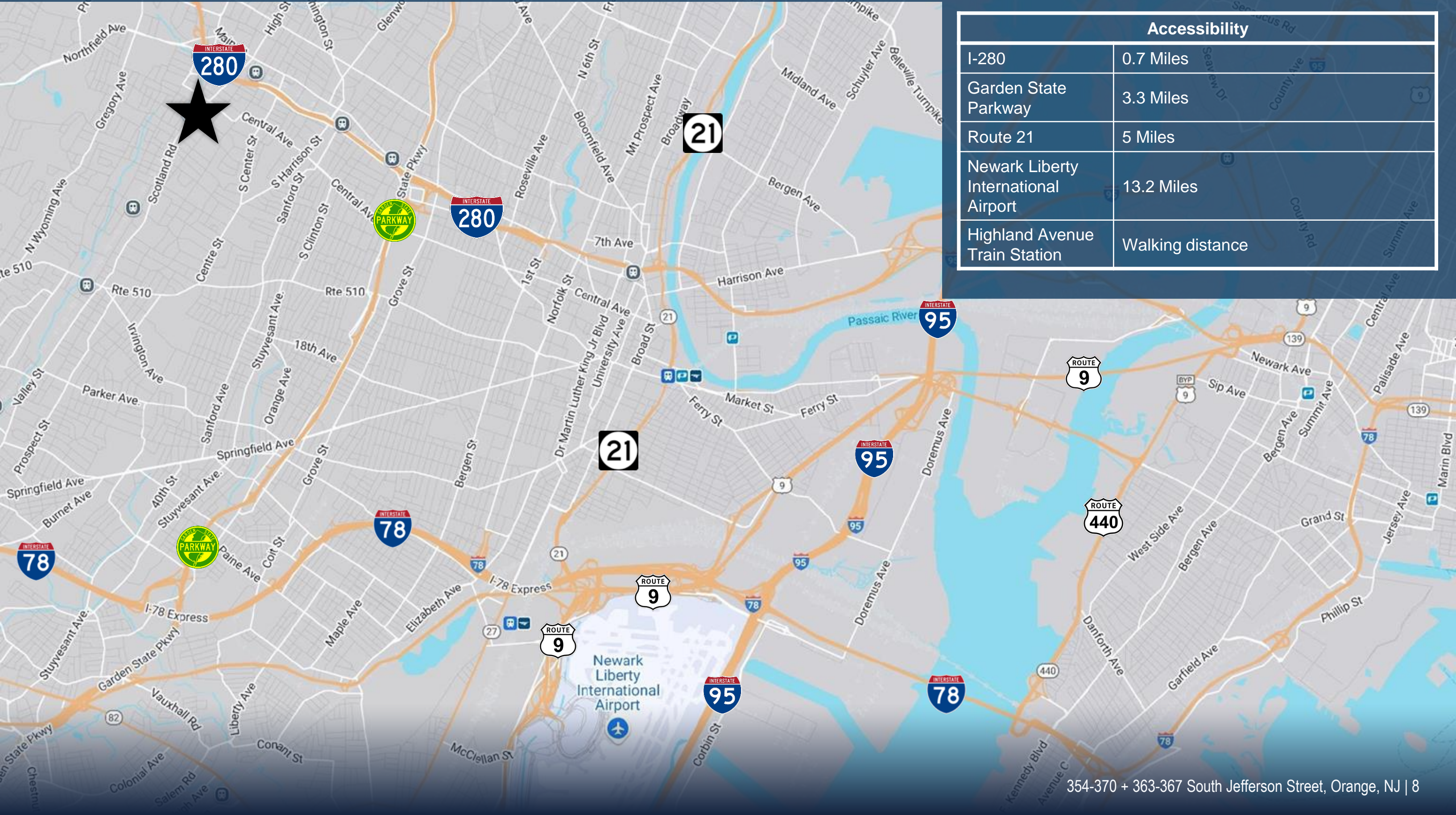
COMMUTER RAIL



COMMUTER RAIL



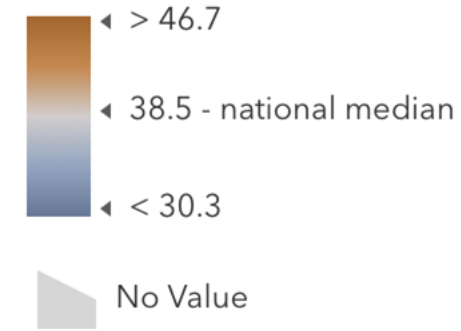
ACCESSIBILITY



Accessibility	
I-280	0.7 Miles
Garden State Parkway	3.3 Miles
Route 21	5 Miles
Newark Liberty International Airport	13.2 Miles
Highland Avenue Train Station	Walking distance

DEMOGRAPHICS

Median Age of Total Population



354-370 + 363-367 SOUTH JEFFERSON ST
ORANGE, NJ



FOR MORE INFORMATION

PLEASE CONTACT:

JASON M. CRIMMINS, SIOR, CCIM

President
973.379.6644 ext 122
jmcrimmins@blauberg.com

ALESSANDRO (ALEX) CONTE, SIOR, CCIM

Executive Vice President
973.379.6644 ext 131
aconte@blauberg.com

PETER J. MURANO, JR., SIOR

Executive Managing Director
973.379.6644 ext 114
pjmurano@blauberg.com

The information contained herein has been obtained from sources considered to be reliable, but no guarantee of its accuracy is made by this company. In addition, no representation is made respecting zoning, condition of title, dimensions, or any matters of a legal or environmental nature. Such matters should be referred to legal counsel for determination. Terms and conditions are subject to change without prior notice. Subject to errors and omissions.

