



## 1025 Cannon Street

Louisville, CO

### Gorgeous Office or Medical Space in Downtown Louisville

#### Lynda Gibbons

lynda@gibbonswhite.com  
(303) 586-5920

#### Steve Sims

steve@gibbonswhite.com  
(303) 586-5932

www.gibbonswhite.com

Property Info & Gallery

View Map

Space	Size	Lease Rate / sq. ft.
Suite 1A	2,236 sq. ft.	\$30.00 NNN
Suite 3A	3,898 sq. ft.	\$28.00 NNN
Suite 3B	1,135 sq. ft.	\$28.00 NNN
Expenses / sq. ft.		\$14.85*

*\*Including Utilities*

- **Suite 1A** - Separate Exterior Entrance & Great Combination of Conference Rooms, Meeting Rooms & Open Work Areas
- **Suite 3A** - Lots of Natural Light & Great Views of Downtown Louisville & Mountains
- Beautiful, Modern Building in the New & Growing DELO Community Perched on the Eastern Edge of Downtown Louisville
- Plenty of Parking Available On Site & Nearby Public Lot
- Convenient Access from Hwy 42 & Easy Commute for Employees Coming from All Over Boulder County & Denver Metro Area – Only 10 Miles from Downtown Boulder & 20 Miles from Downtown Denver!
  - 10 Minutes from Boulder, University of Colorado, Folsom Field & Pearl Street Mall
  - 20 Minutes from Downtown Denver, Coors Field, Ball Arena & Mile High Stadium
  - 30 Minutes from Denver International Airport
- Short Walk Through the South Street Underpass to All of the Excitement of Downtown Louisville Including Restaurants, Bars, Coffee Shops, Summer Street Fairs & Farmer's Market!

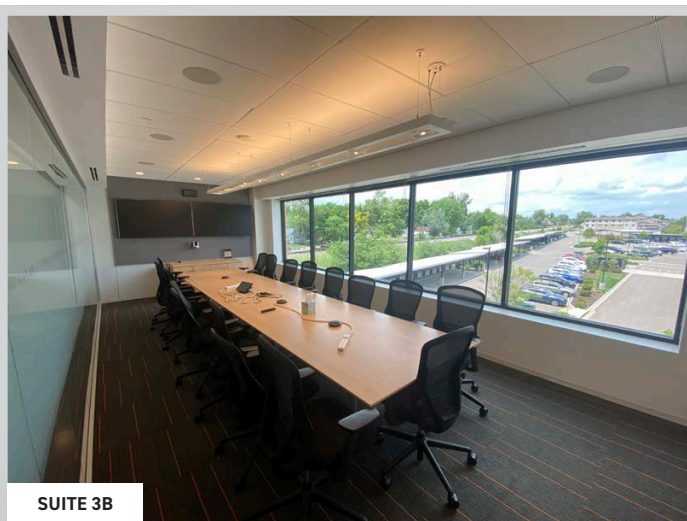
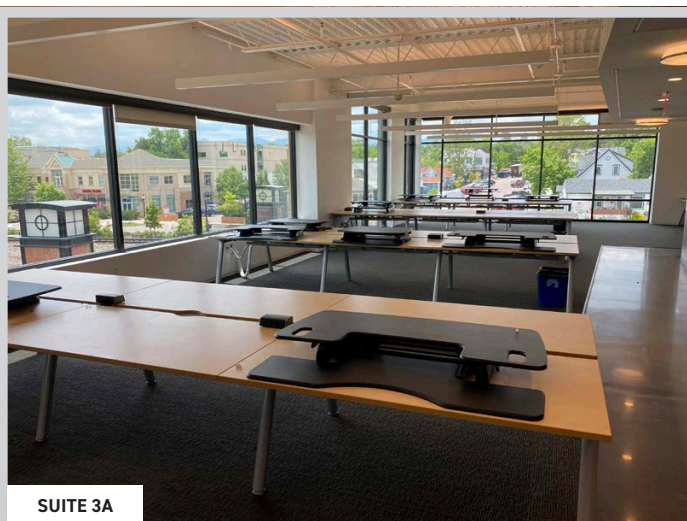
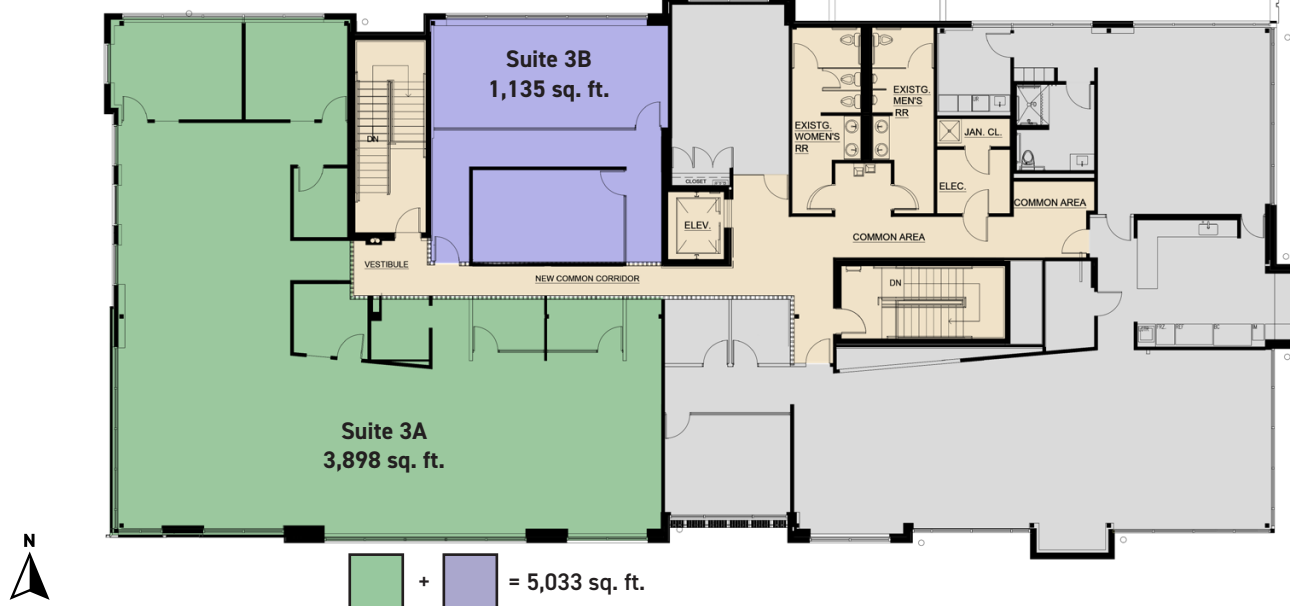
© 2025 Gibbons-White, Inc.



2305 Canyon Blvd, Suite 200, Boulder, CO 80302 • (303) 442-1040

The information included has been obtained from sources believed reliable. While we do not doubt the accuracy, it is unverified and no representation is being made.

### 3rd Floor



### Suite 1A 2,236 sq. ft. Available 3/1/2026

