

# FOR LEASE

RETAIL SPACE IN DUNCAN, SC BUSINESS DISTRICT



REEDY COMMERCIAL



700 E MAIN ST | DUNCAN, SC 29334

## PROPERTY DESCRIPTION

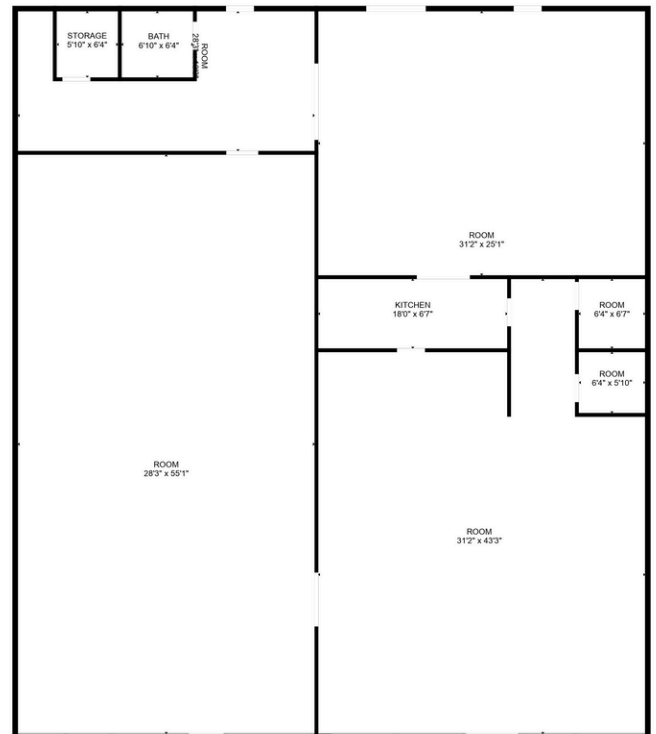
- Spartanburg TMS#: 5-20-00-040.02
- Traffic Counts - 19,900 VPD
- Road Frontage: ±729 ft on E Main St.
- Parking: ±246 Spaces
- Located ±2 miles to I-85 (Exit 63)
- Located ±3 miles from Byrnes Highschool
- Recent improvements to building's exterior
- Highly visible and easily accessible on E. Main St.
- Co-Tenants Include:
  - Dollar Tree, El Primo Mexican Restaurant, NXT LVL Chiropractic, Workout Anytime, and Studio 28 Dance Academy

## OFFERING SUMMARY

**Availability:** ± 4,400 sq ft

**Lease Rate:** \$15/sqft (NNN)

**Zoning:** General Business District, City of Duncan



FLOOR PLAN CREATED BY CUBICASA APP. MEASUREMENTS DEEMED HIGHLY RELIABLE BUT NOT GUARANTEED.

**JOSIE HOLLINGSWORTH**

864.901.5007  
jhollingsworth@reedypg.com

**ELLICE NIEDRACH**

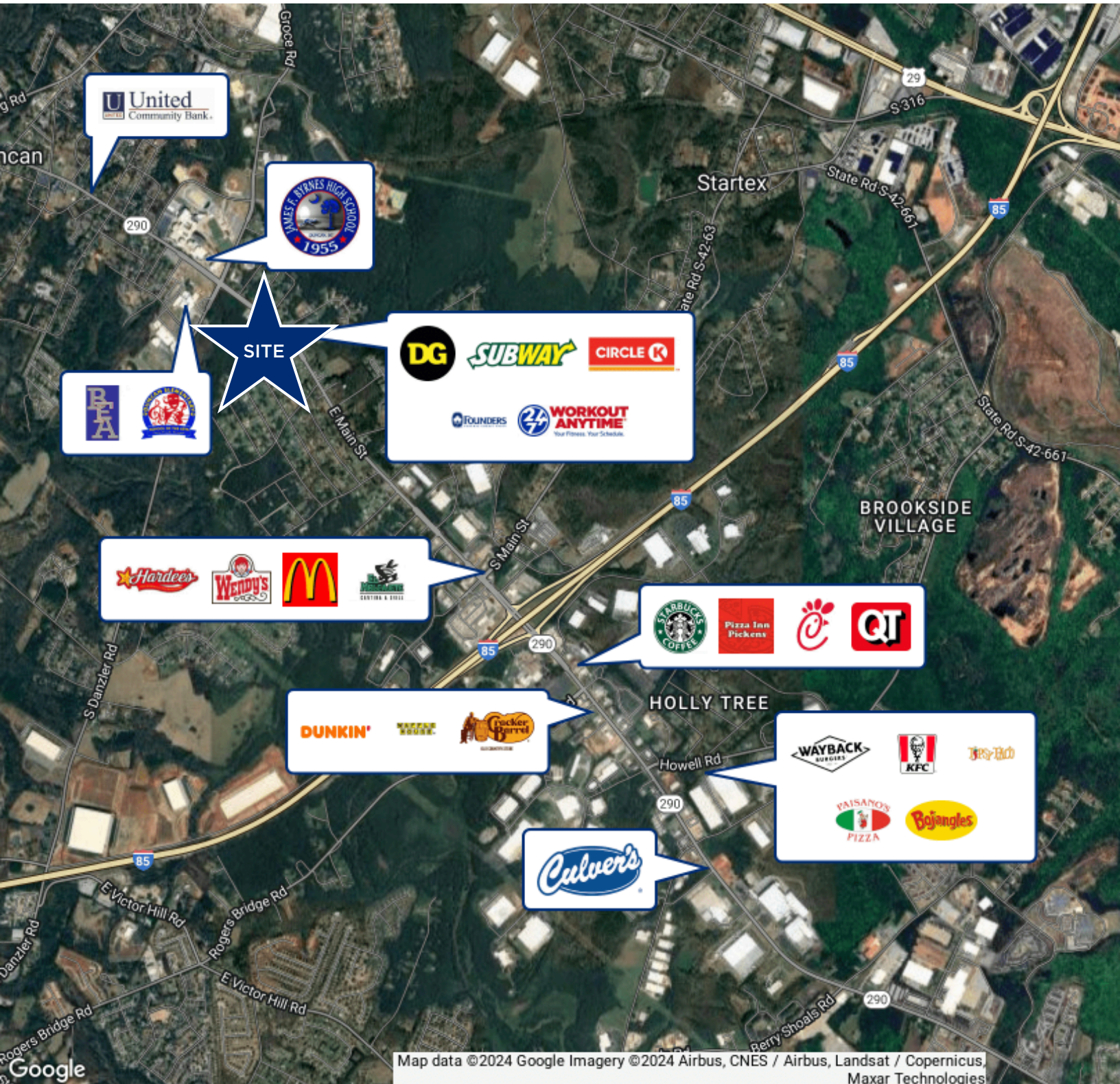
864.680.7916  
eniedrach@reedypg.com

**REEDY PROPERTY GROUP**

301 N. Main Street, Suite 501  
Greenville, SC 29601  
reedyccommercial.com



700 E Main St  
Duncan, SC 29334



Map data ©2024 Google Imagery ©2024 Airbus, CNES / Airbus, Landsat / Copernicus, Maxar Technologies

**JOSIE HOLLINGSWORTH**  
864.901.5007  
jhollingsworth@reedypg.com

**ELLICE NIEDRACH**  
864.680.7916  
eniedrach@reedypg.com

**REEDY PROPERTY GROUP**  
301 N. Main Street, Suite 501  
Greenville, SC 29601  
reedyccommercial.com