

# FOR SALE OR LEASE OWNER-USER OPPORTUNITY

6501 E COMMERCE AVE  
KANSAS CITY, MO

AREA  
REAL ESTATE ADVISORS



## PROPERTY HIGHLIGHTS

---

11,900 SF SUITE

RECENTLY UPDATED COMMON AREAS AND BATHROOMS

4:1,000 PARKING RATIO

EXTERIOR BUILDING SIGNAGE AVAILABLE

LOCATED IN EXECUTIVE PARK INDUSTRIAL PARK

EASY ACCESS TO I-435 AND ONLY 10 MINUTES FROM DOWNTOWN

CONTACT FOR SALE PRICING

## MORE INFORMATION

---

JAY HAWKINS

**D** 816.895.4808

**E** JHAWKINS@OPENAREA.COM

TIM SCHAFFER

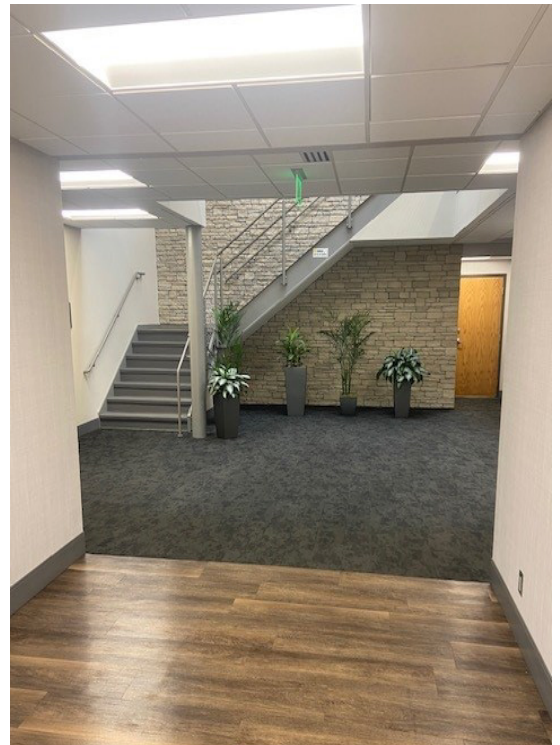
**D** 816.876.2535

**E** TSCHAFFER@OPENAREA.COM



# INTERIOR PHOTOS

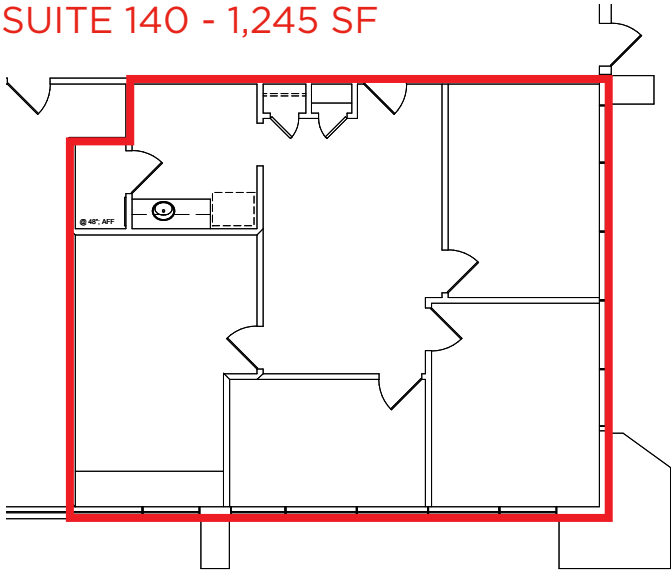
**AREA**  
REAL ESTATE ADVISORS



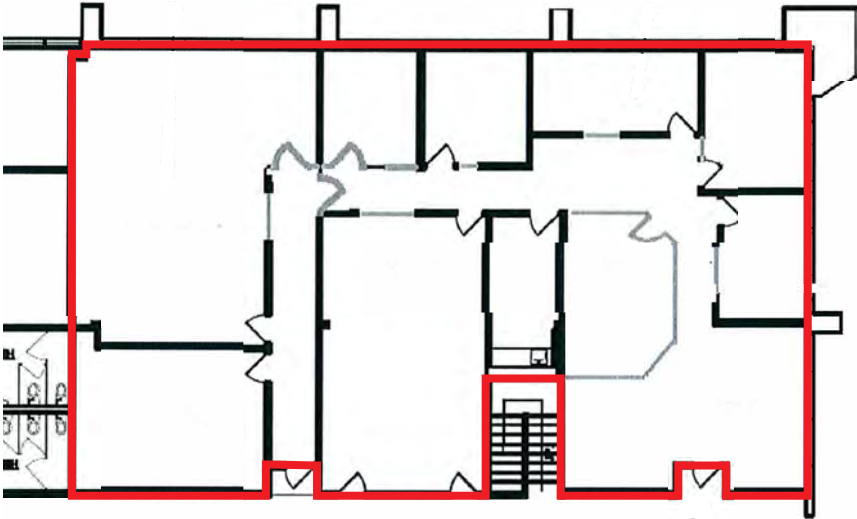
# FLOOR PLANS



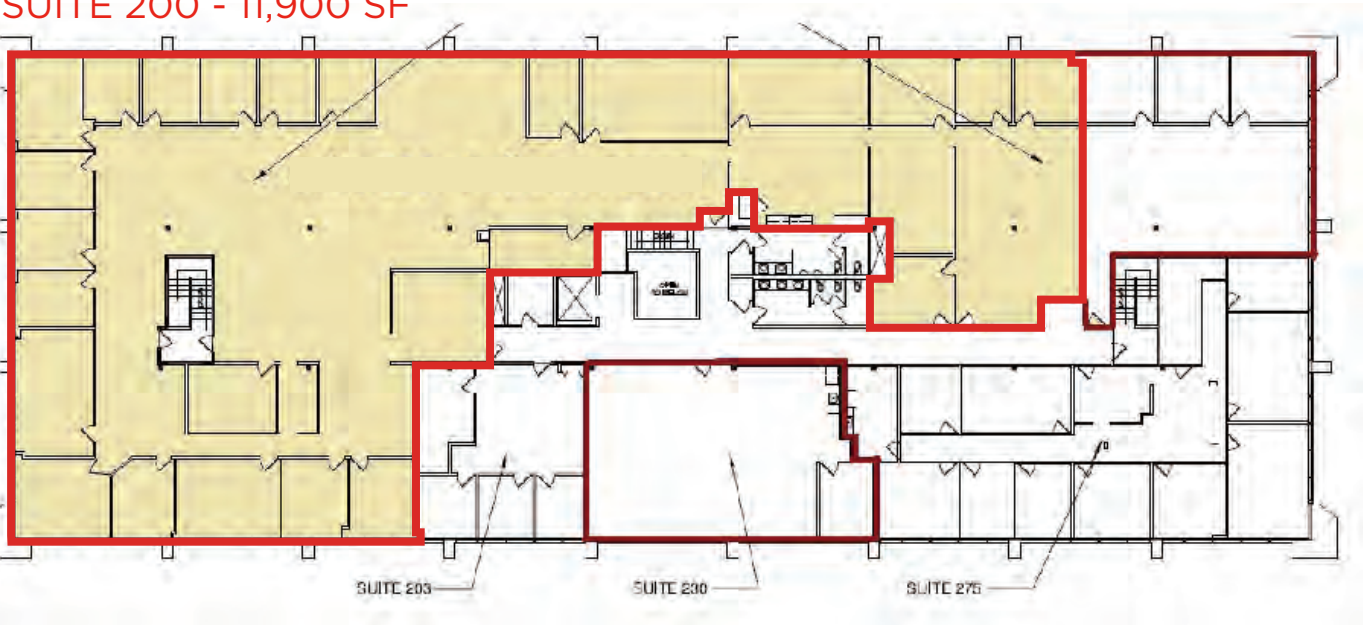
SUITE 140 - 1,245 SF



SUITE 170 - 4,096 SF



SUITE 200 - 11,900 SF



The information used to create this brochure was gathered from sources deemed reliable. Though we do not doubt its accuracy, we do not guarantee or warranty it. You and your advisors should conduct a careful independent investigation of the information to determine your satisfaction and suitability.



