

FIRST FLOOR PLAN LAYOUT

1/4" = 1'-0"

REVISIONS	BY

OMNIGRAPHICS
DESIGN

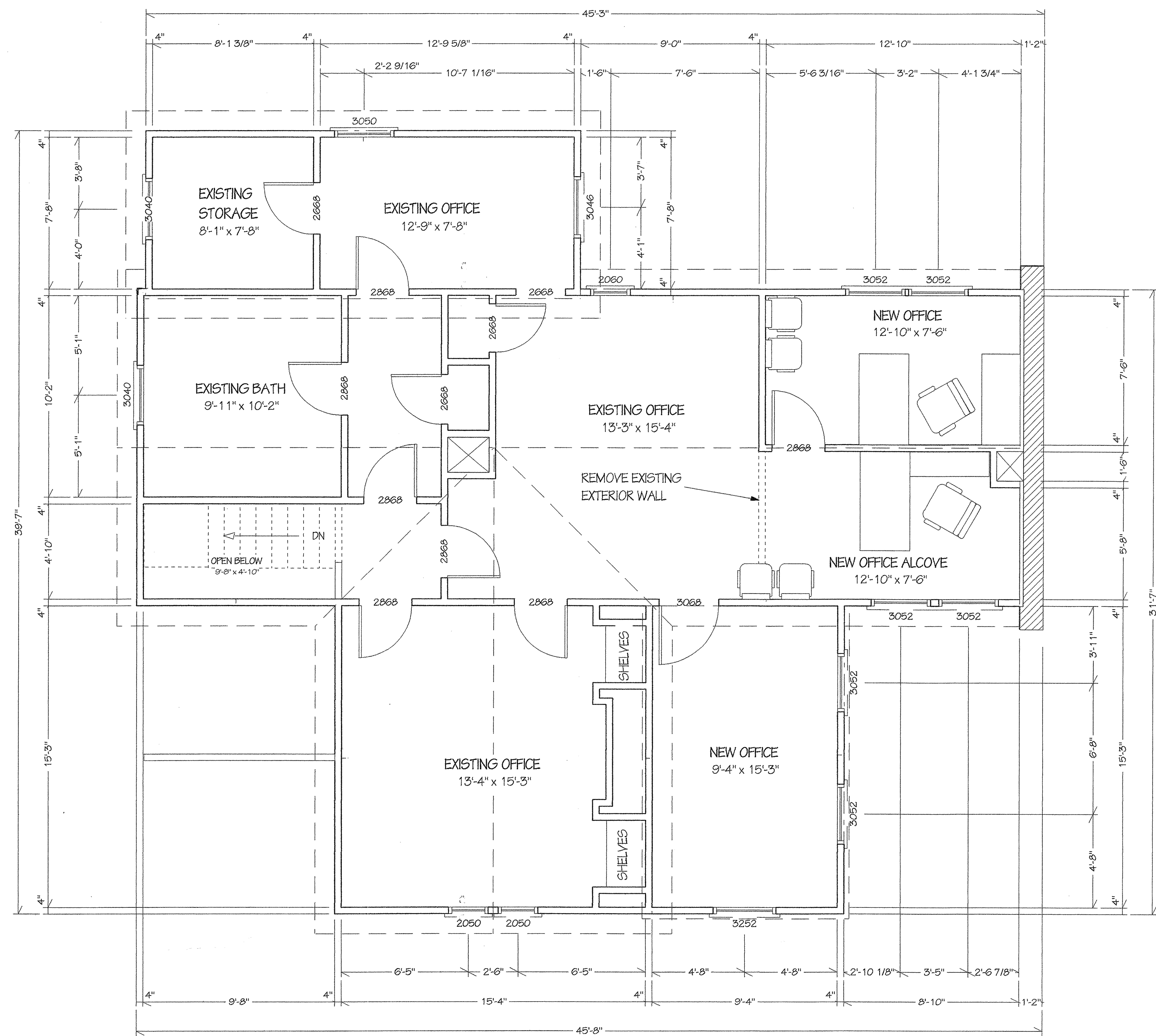
286
WATKINS LANE
LOUISA, VA.
23093

(540)967-2463

PRELIMINARY PLANS FOR ADDITION TO
LAW OFFICES AT 406 AMELIA STREET
IN FREDERICKSBURG, VIRGINIA

DRWN. BY: KWM, Jr.
CHKD. BY:
DATE: 6-12-01
SCALE: SEE DETAIL
JOB NO.: VENTURA LAW

SHEET
A-3
OF 4 SHEETS



SECOND FLOOR PLAN LAYOUT

1/4" = 1' - 0"

REVISIONS	BY

OMNIGRAPHICS
DESIGN

286
WATKINS LANE
LOUISA, VA.
23093

(540)967-2463

PRELIMINARY PLANS FOR ADDITION TO
LAW OFFICES AT 406 AMELIA STREET
IN FREDERICKSBURG, VIRGINIA

DRWN. BY: KWM, Jr.
CHKD. BY:
DATE: 6-12-01
SCALE: SEE DETAIL
JOB NO.: VENTURA LAW

SHEET
A-4
OF 4 SHEETS