

# Industrial Space | For Lease

1057 Ellis Road N, Jacksonville, Florida 32254

CBRE



**Suite 1:** 4,572 SF Available 12/01/2025

**Suite 4-6:** 12,747 SF Available 12/01/2025

OPEX: \$2.22/ SF

Asking Rate: Please Inquire

For More Information, Please Contact:

**Kyle Fisher**

First Vice President

+1 864 540 5926

kyle.fisher@cbre.com

**Kyle Murphy**

Associate

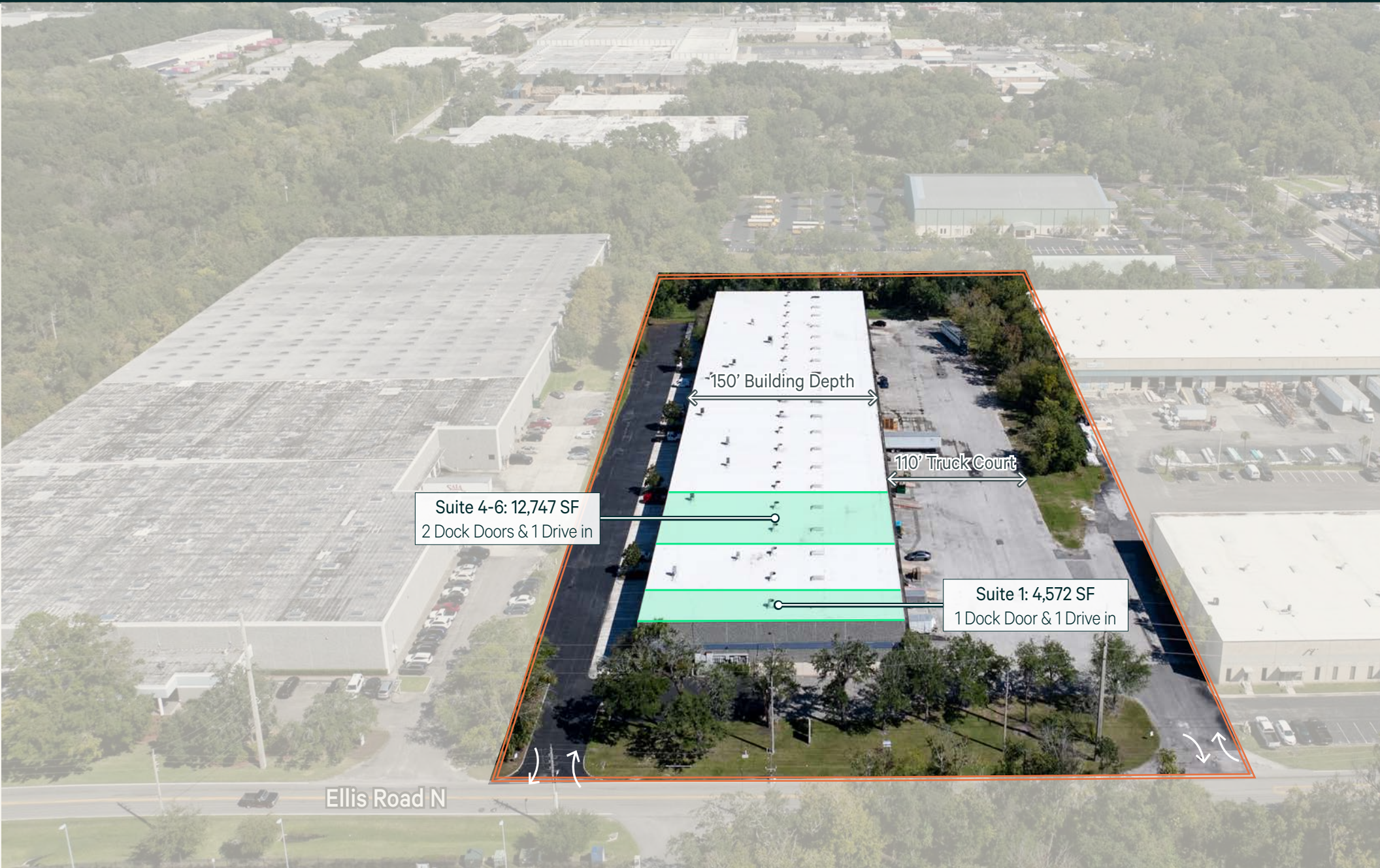
+1 845 416 3890

kyle.murphy@cbre.com



# Industrial Space | For Lease

1057 Ellis Road N, Jacksonville, Florida 32254



Suite 1: 4,572 SF Available

Premises Size4,572 SF

Office Space400 SF

Dock Doors1 Dock High Door & 1 Drive in

Load ConfigurationRear

ZoningLight Industrial (IL)

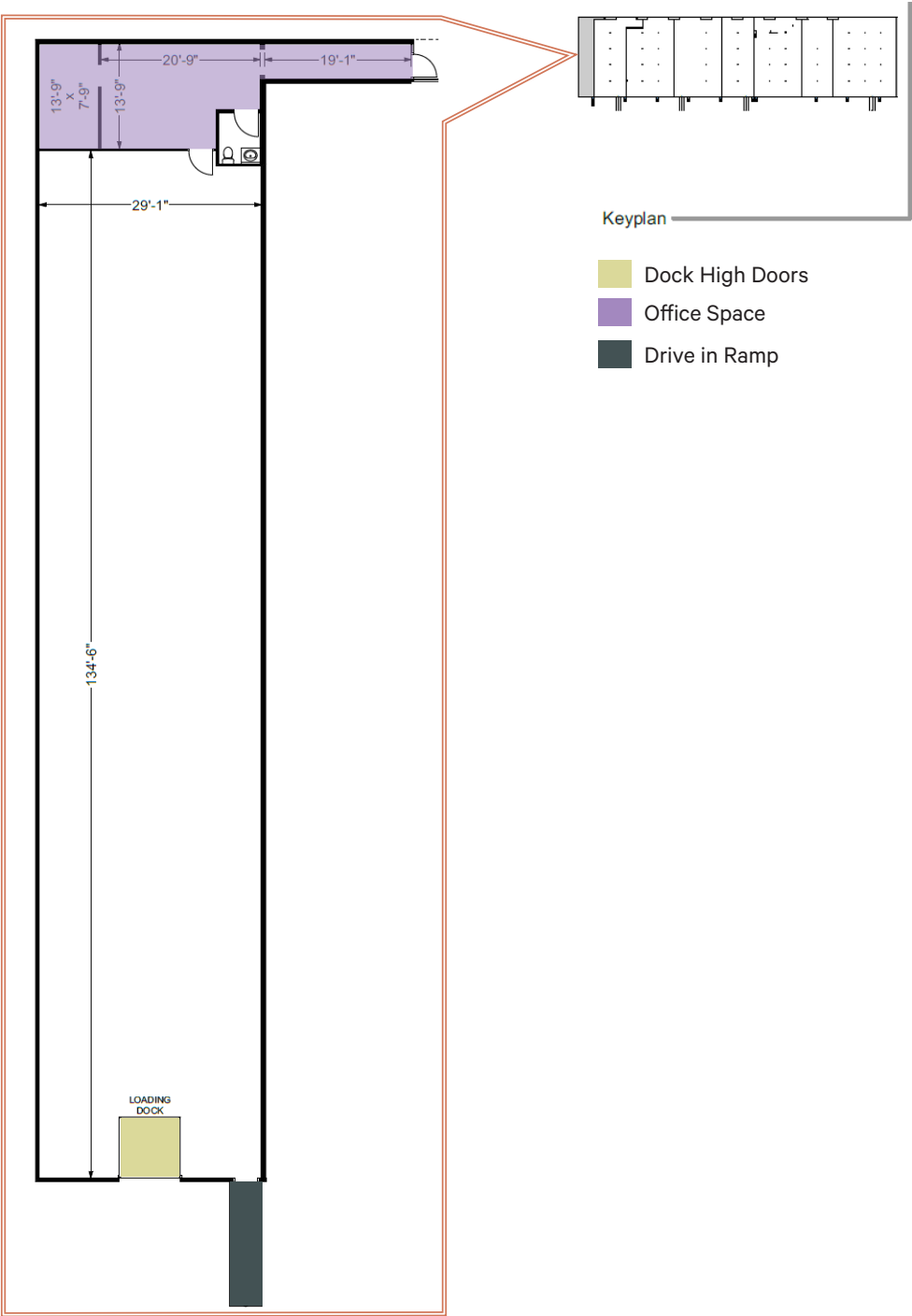
Clear Height22'

Warehouse LightingLED

Fire SuppressionWet Pipe

Truck Court110'

Auto Parking0.75/1,000 SF

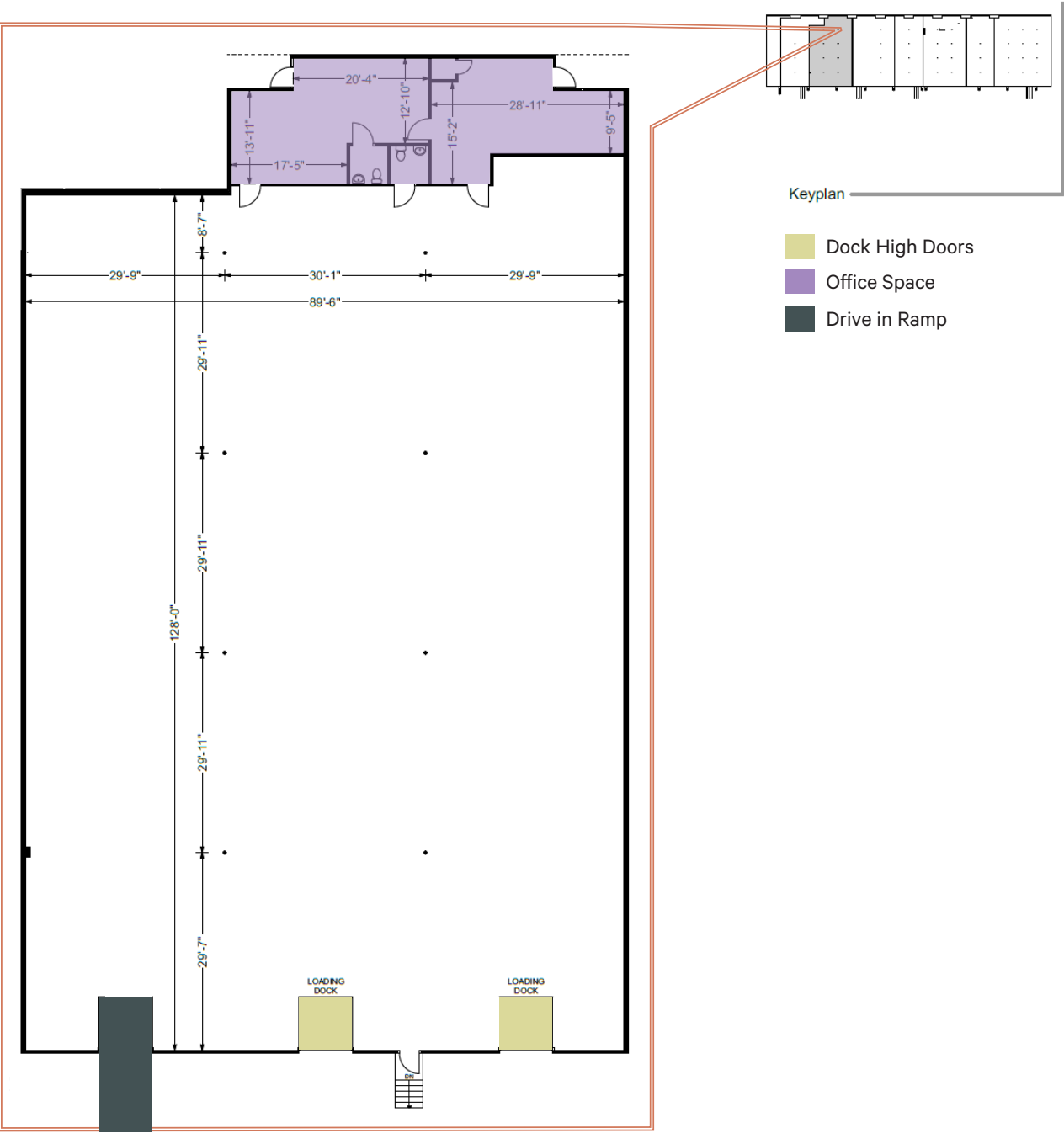






Suite 4-6: 12,747 SF Available

Premises Size	12,747 SF
Office Space	1,000 SF
Dock Doors	2 Dock High Doors & 1 Drive in
Load Configuration	Rear
Zoning	Light Industrial (IL)
Clear Height	22'
Warehouse Lighting	LED
Fire Suppression	Wet Pipe
Truck Court	110'
Auto Parking	0.75/1,000 SF







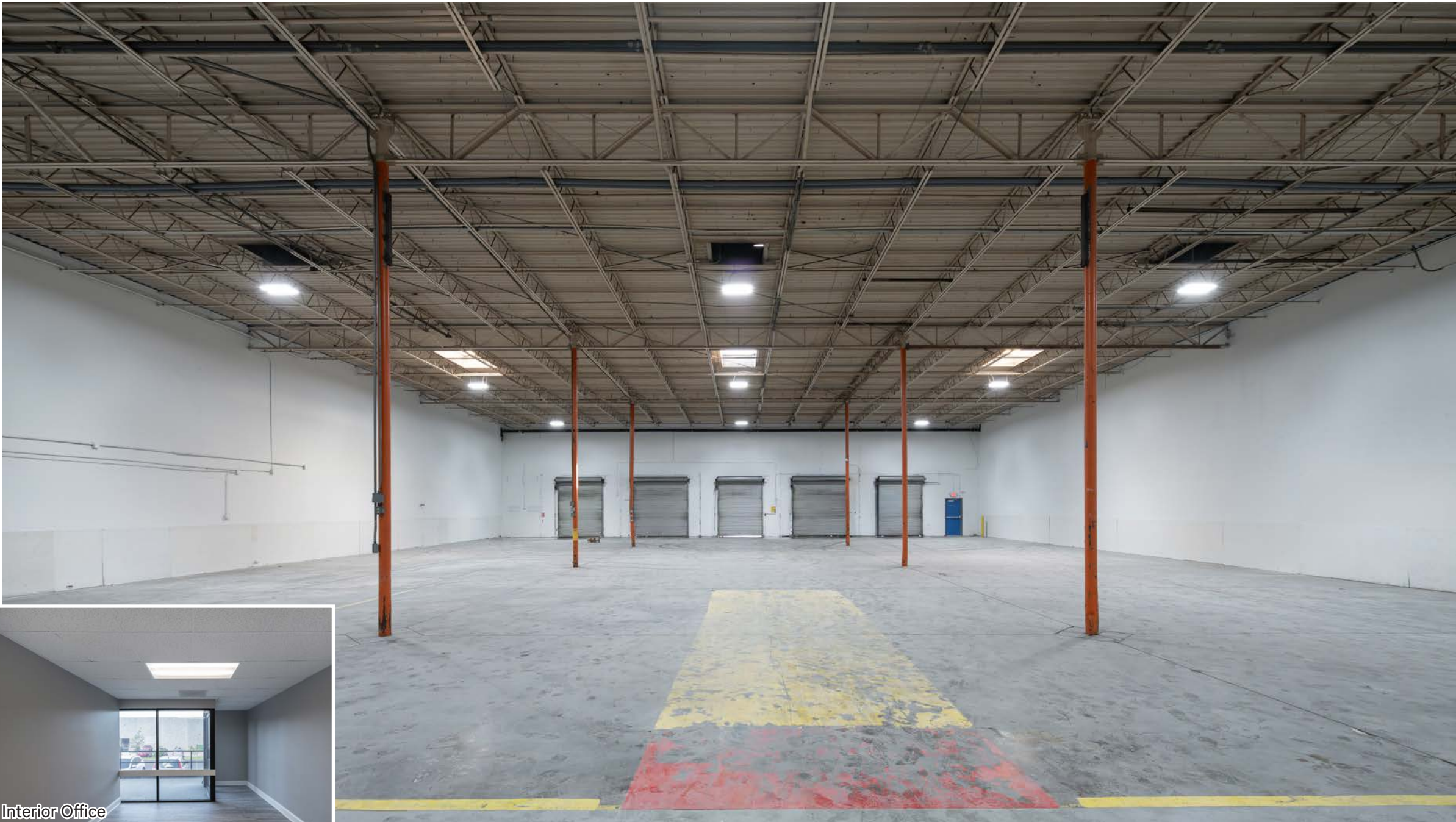
Interior Office

Suite 12-14: 14,700 SF Available

Premises Size	14,700 SF
Office Space	1,400 SF
Dock Doors	5 Dock High
Load Configuration	Rear
Zoning	Light Industrial (IL)
Clear Height	22'
Warehouse Lighting	LED
Fire Suppression	Wet Pipe
Truck Court	110'
Auto Parking	0.75/1,000 SF

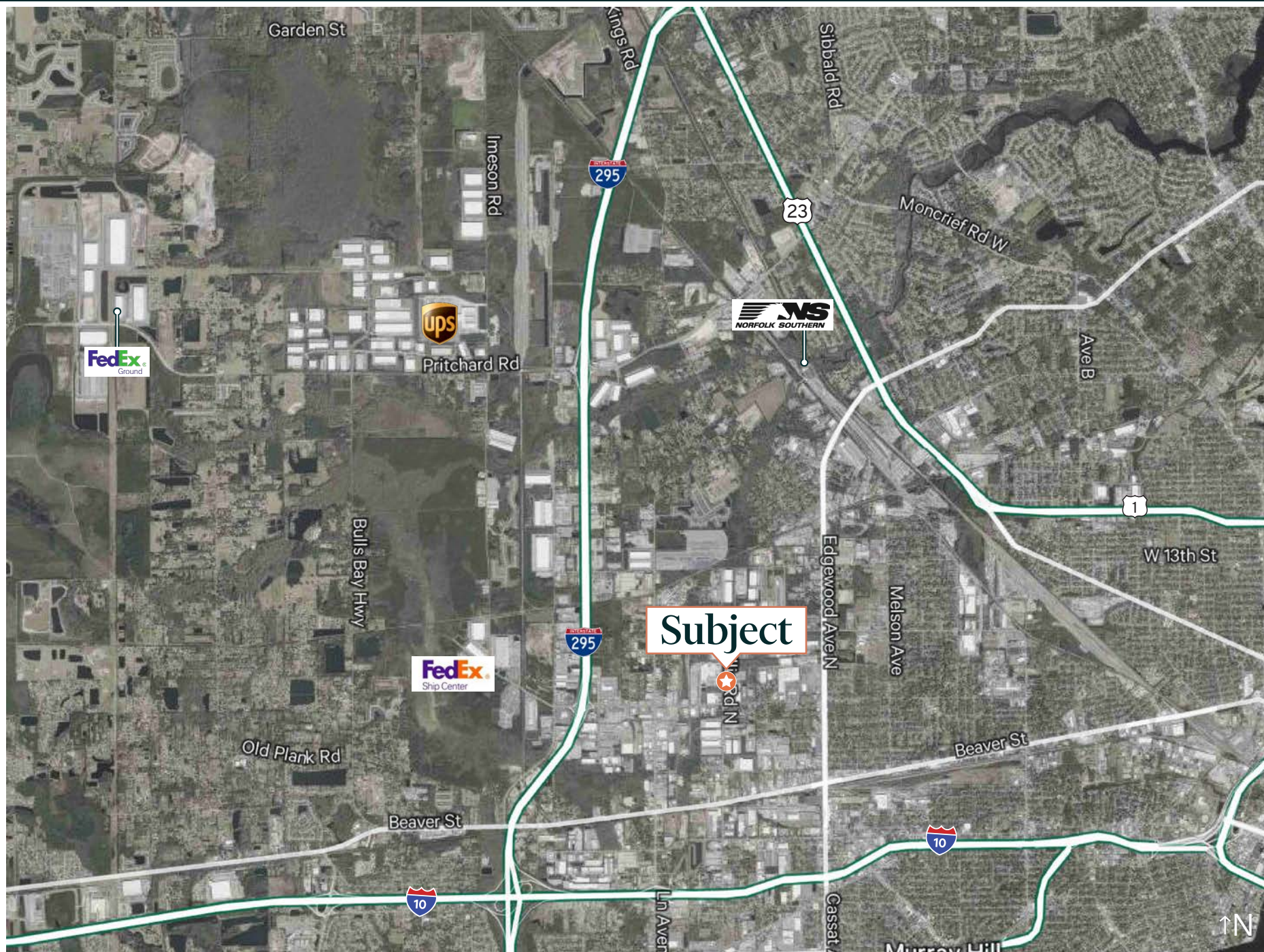




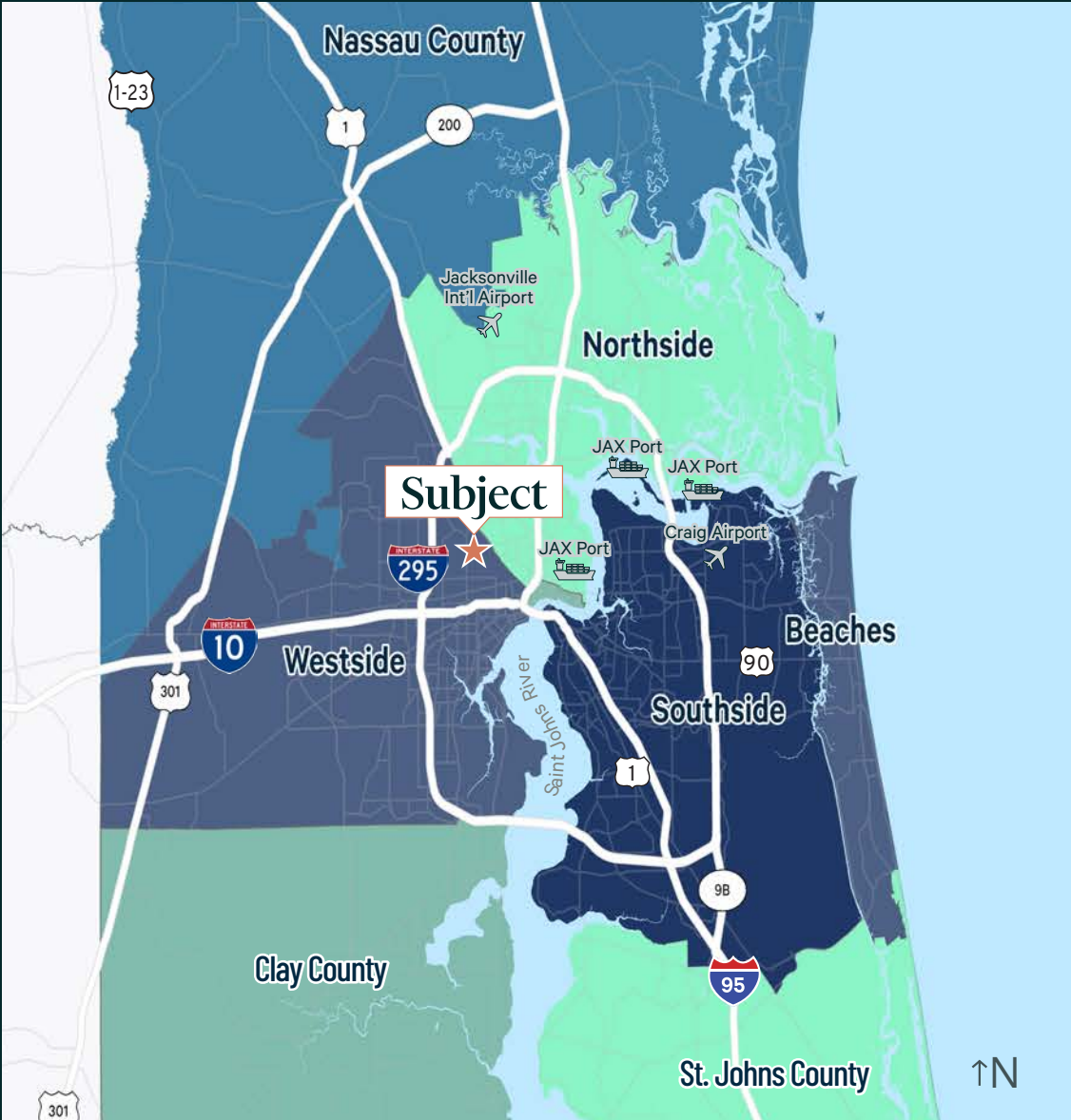




1057 Ellis Road N, Jacksonville, Florida







Points of Interest	Distance
Interstate 295	1 mile
US-1	1.1 miles
Interstate 95	2.5 miles
US-10	3.1 miles
CSX Intermodal Facility	5.1 miles
Norfolk Southern Intermodal Facility	5.2 miles
JAXPORT   Talleyrand	9.6 miles
FEC Intermodal Facility	12.2 miles
Jacksonville Int'l Airport	15.8 miles
JAXPORT   Dames Point	22.7 miles
JAXPORT   Blount Island	22.7 miles
Port of Savannah	145 miles
Port of Tampa	196 miles
Port of Charleston	244 miles

For More Information, Please Contact:

**Kyle Fisher**  
First Vice President  
+1 864 540 5926  
kyle.fisher@cbre.com

**Kyle Murphy**  
Associate  
+1 845 416 3890  
kyle.murphy@cbre.com