

*For More Information:*

CLAY SHORT

662.231.4262

[cshort@trirealestate.net](mailto:cshort@trirealestate.net)

Retail Property For Lease

*Tupelo, MS 38804*

507 NORTH GLOSTER ST



324 Troy Street  
Tupelo, MS 38804  
662.842.8283

[www.trirealestate.net](http://www.trirealestate.net)



## OFFERING SUMMARY

**Available SF:** 6,000 - 14,820 SF

**Lease Rate:** Negotiable

**Lot Size:** 1.07 Acres

**Year Built:** 1974

**Building Size:** 14,820 SF

## PROPERTY OVERVIEW

6,000 SF space and 8,820 SF space for up to 14,820 SF at street level. Both spaces have large retail sales floors and basement space below for storage. There are 37 shared paved parking spaces available with an additional proposed parking lot with 24 parking spaces. Landlord is willing to provide TIA for qualified Tenants.

## LOCATION OVERVIEW

Well located on North Gloster Street a primary commercial thoroughfare with one of Tupelo's highest traffic counts. (22,000 ADT). Surrounded by retail, medical, and office users and in close proximity to downtown.

### ***For More Information:***

CLAY SHORT

662.842.8283

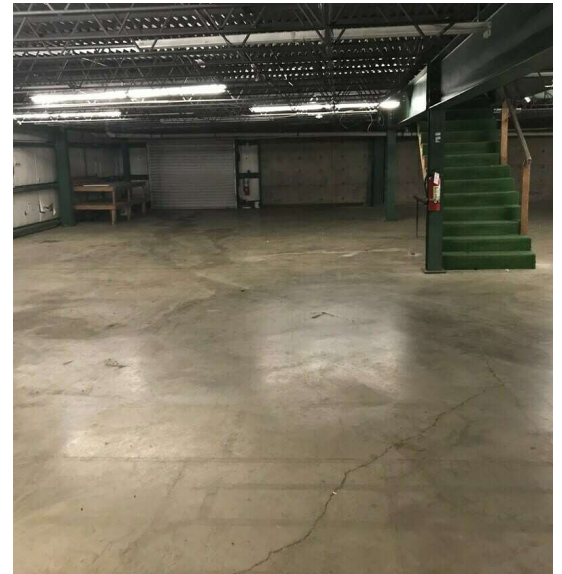
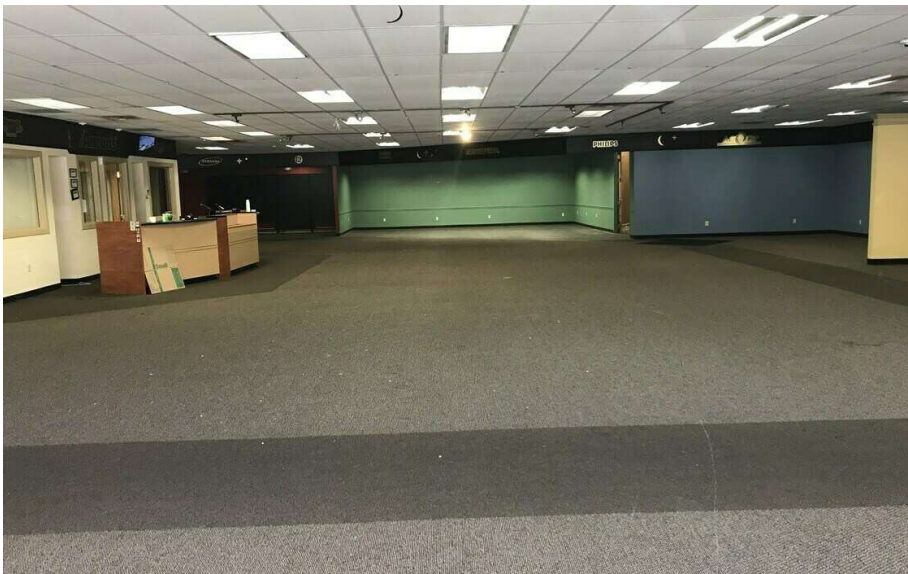
cshort@trirealestate.net





*Tupelo, MS 38804*

507 NORTH GLOSTER ST



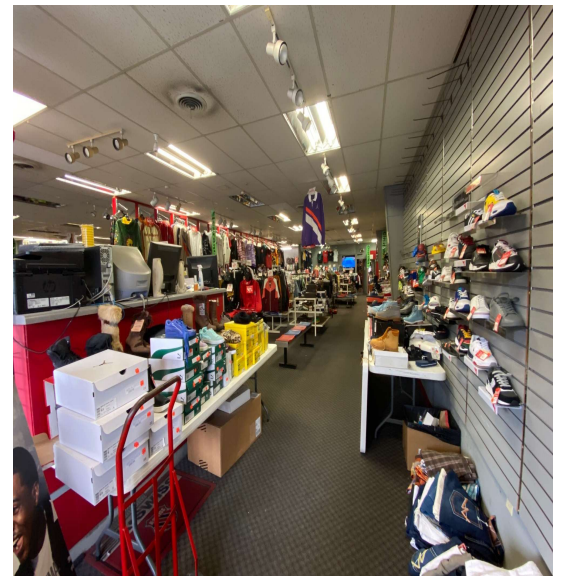
***For More Information:***

CLAY SHORT

662.842.8283

[cshort@trirealestate.net](mailto:cshort@trirealestate.net)





**For More Information:**

CLAY SHORT

662.842.8283

cshort@trirealestate.net



SPACE	SPACE USE	LEASE RATE	LEASE TYPE	SIZE (SF)	TERM	COMMENTS
Suite A		NEGOTIABLE	NNN	6,000 - 14,820 SF	Negotiable	
Suite B		NEGOTIABLE	NNN	8,820 - 14,820 SF	Negotiable	

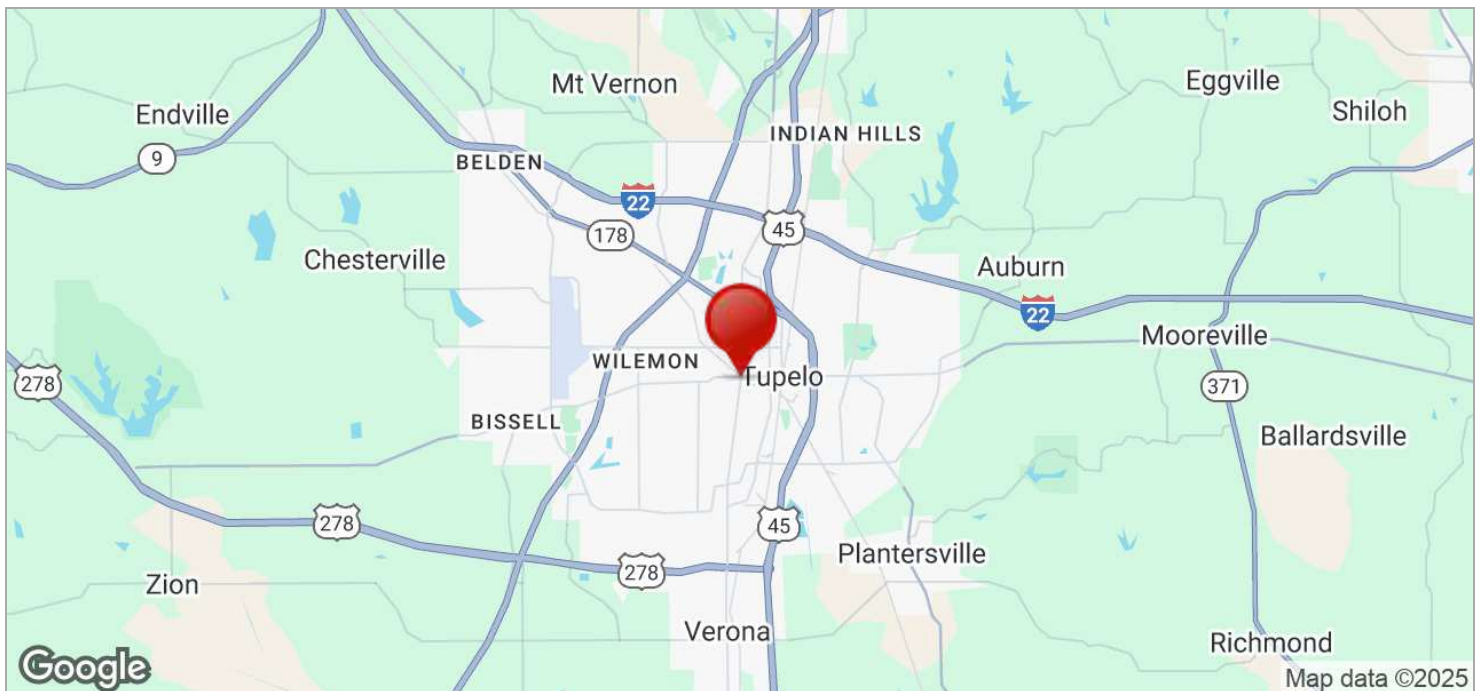
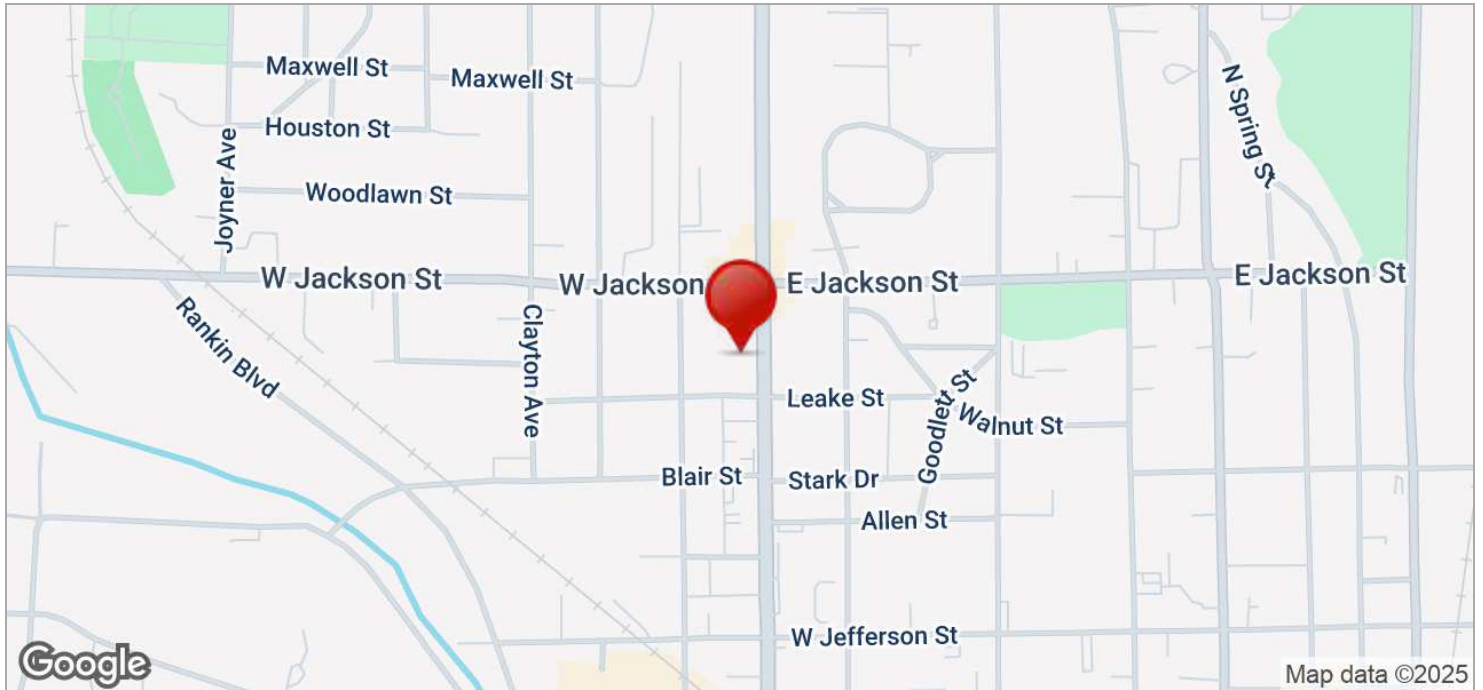
**For More Information:**

CLAY SHORT

662.842.8283

cshort@trirealestate.net





***For More Information:***

CLAY SHORT

662.842.8283

[cshort@trirealestate.net](mailto:cshort@trirealestate.net)