



Heavy Power Industrial Sublease

1911 Lundy Avenue, San Jose | ±45,000 SF

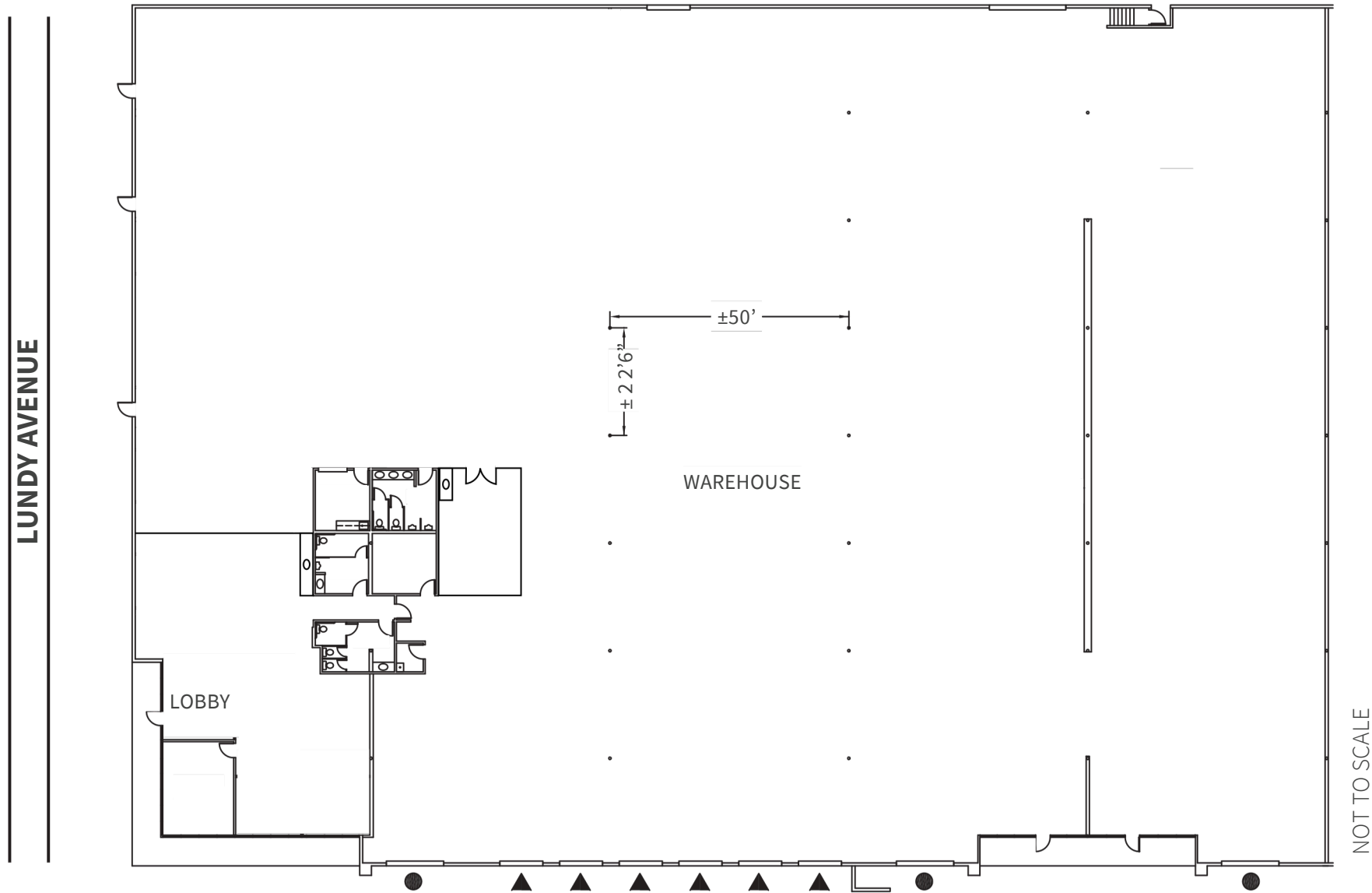
Alex Lagemann
408 221 2310
alex.lagemann@jll.com
Lic. #02052598

Property Highlights:

- ±45,000 SF Available Immediately
- 2,000 amps @ 480 Volts Power
(Tenant to Verify)
- 26-ft Max Clear Height
- 100% HVAC
- 6 Dock & 3 Grade level doors
- 4/30/2030 LED
- End Unit w/ Lundy Ave Frontage
- Backup Generator
- Easy access to Hwy's 880, 680, & 101



1911 Lundy Ave | ±45,000 SF



Amenities Map



1911 Lundy Avenue, San Jose ±45,000 SF



Contact: Alex Lagemann
Senior Managing Director
408 221 2310
alex.lagemann@jll.com
Lic. #02024474



Jones Lang LaSalle Americas, Inc. License #: 01856260

Although information has been obtained from sources deemed reliable, JLL does not make any guarantees, warranties or representations, express or implied, as to the completeness or accuracy as to the information contained herein. Any projections, opinions, assumptions or estimates used are for example only. There may be differences between projected and actual results, and those differences may be material. JLL does not accept any liability for any loss or damage suffered by any party resulting from reliance on this information. If the recipient of this information has signed a confidentiality agreement with JLL regarding this matter, this information is subject to the terms of that agreement. ©2025 Jones Lang LaSalle Brokerage, Inc. All rights reserved.