

RETAIL LAND SITE FOR SALE



GC

REALTY & DEVELOPMENT, LLC.



.73 Acre Corner Lot On Lake/Maple

125-127 W. Lake St, Bloomingdale IL 60108

Brad Bullington: 630-674-6989

GC Realty & Development LLC 219 E. Irving Pk. Rd. Roselle IL 6017

All information deemed accurate but not guaranteed.

Sale Price: \$250,000

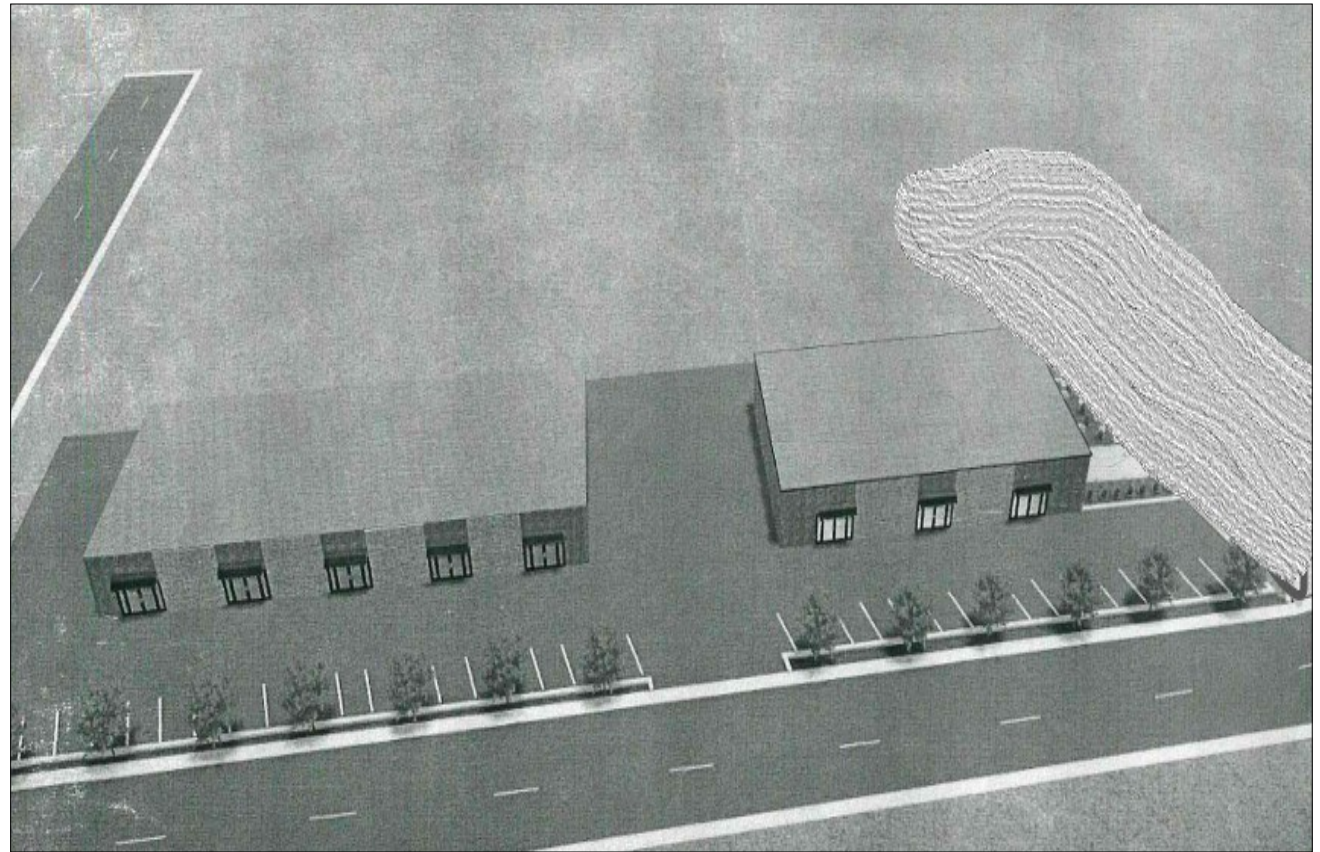


PROPERTY INFORMATION

- ◆ Site Size: 37,798 SF
- ◆ Dimensions: 105x339
- ◆ Frontage: 339 Ft
- ◆ Taxes: \$4,356
- ◆ County: Dupage
- ◆ Zoning: B-2

PROPERTY SUMMARY

Two contiguous land sites on the NE corner of Maple and Lake St. in Old Town Bloomingdale. Ideal for new retail or office development with visibility on Lake St.



Brad Bullington

630-674-6989

brad@gcrealtyinc.com

bradbullington.com

GC Realty & Development LLC

219 E. Irving Pk. Rd. Roselle IL 60172

Sale Price: \$250,000

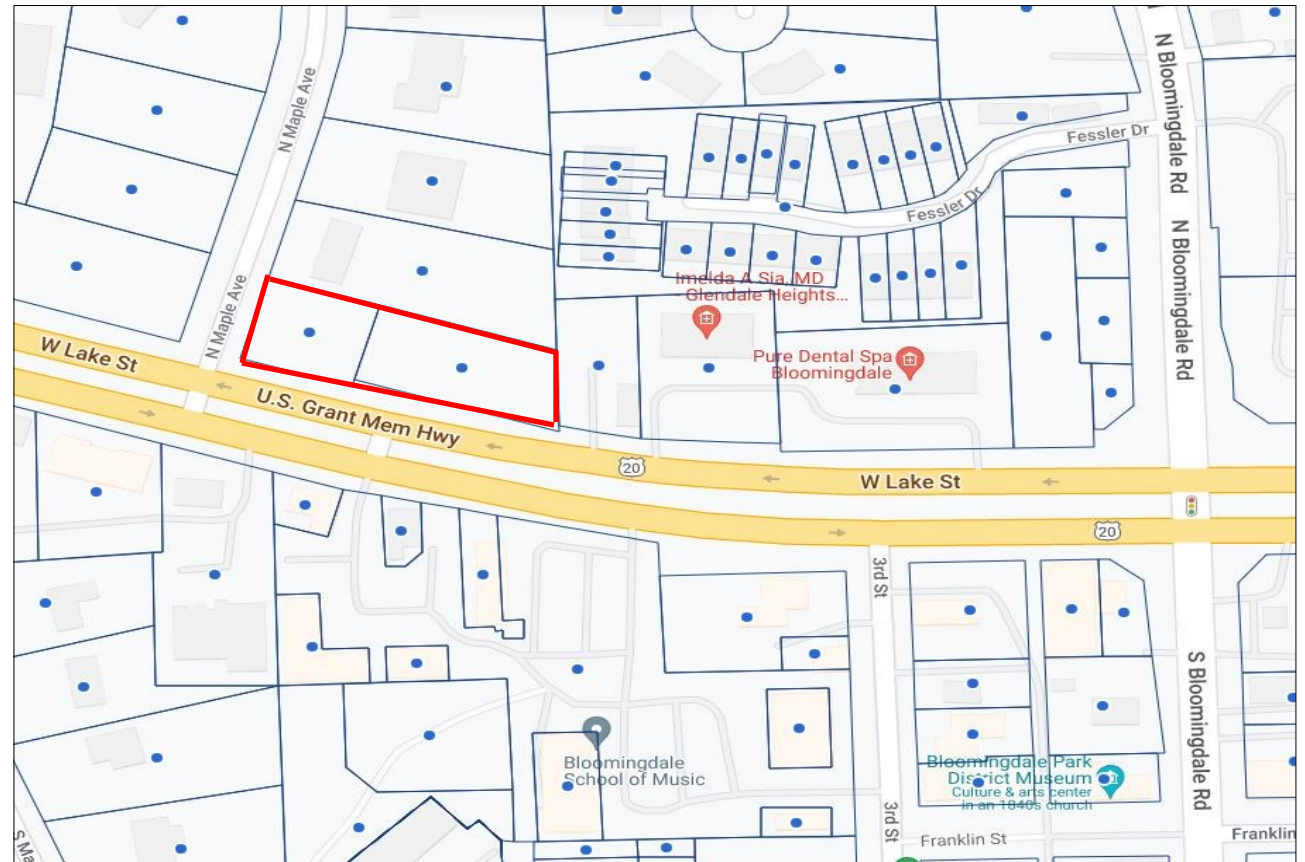


PROPERTY INFORMATION

- ◆ Site Size: 37,798 SF
- ◆ Dimensions: 105x339
- ◆ Frontage: 339 Ft
- ◆ Taxes: \$4,356
- ◆ County: Dupage
- ◆ Zoning: B-2

PROPERTY SUMMARY

Two contiguous land sites on the NE corner of Maple and Lake St. in Old Town Bloomingdale. Ideal for new retail or office development with visibility on Lake St.



Brad Bullington

630-674-6989

brad@gcrealtyinc.com

bradbullington.com

GC Realty & Development LLC

219 E. Irving Pk. Rd. Roselle IL 60172