

1125 TROWBRIDGE
EAST LANSING, MICHIGAN

OFFICE FOR LEASE
2,000 Square Feet Available



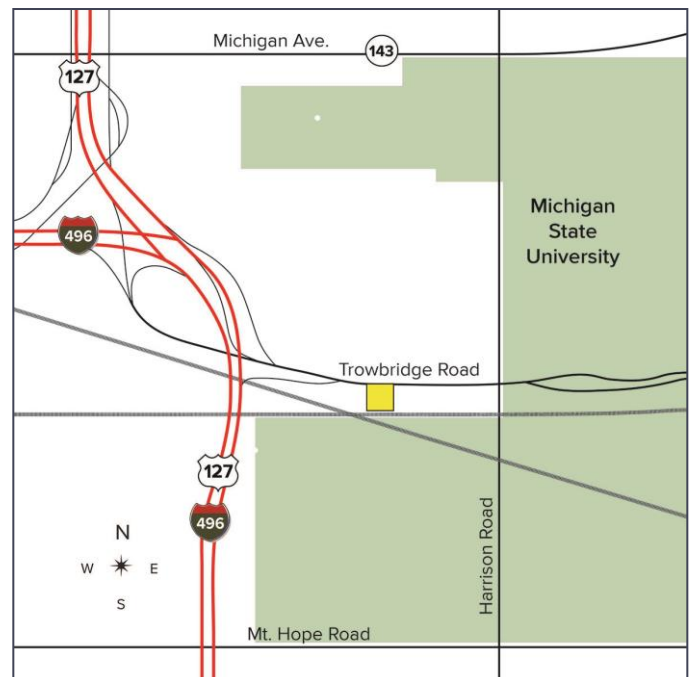
**SIGNATURE
ASSOCIATES**
KNOW SIGNATURE | KNOW RESULTS

WALKABLE TO MSU CAMPUS



PROPERTY FEATURES

- 2,000 square foot East Lansing office space
- Very central location and convenient at the Trowbridge exit
- High traffic (14,887 VPD) and visibility
- Zoned B-2
- Lease Rate: \$14.00/sf NNN (\$2,333/mo) NNN



For more information, please contact:

JEROME ABOOD, CCIM
(517) 281 5800
jabood@signatureassociates.com

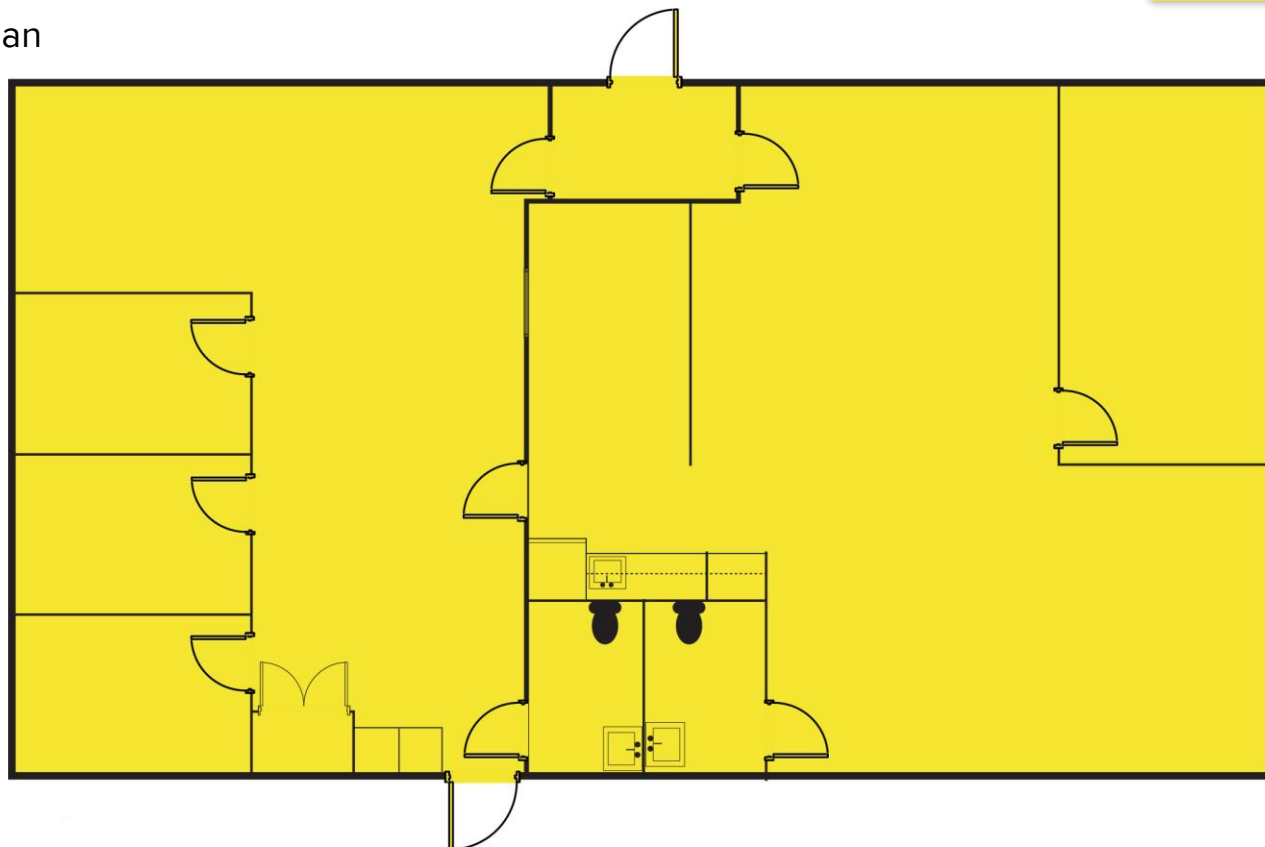
SIGNATURE ASSOCIATES
1125 Trowbridge Road
East Lansing, MI 48823
www.signatureassociates.com

1125 Trowbridge Road – East Lansing, Michigan

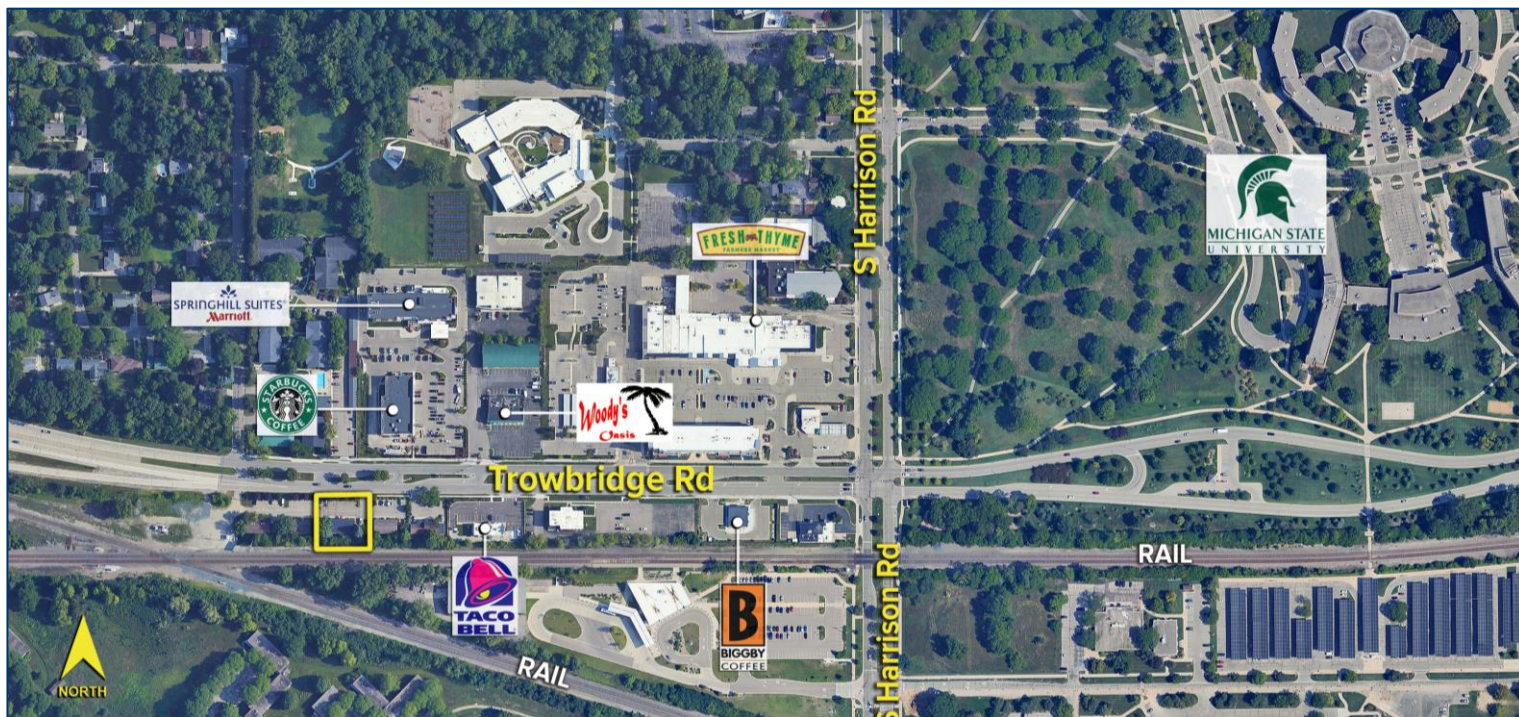
Office for Lease

2,000
Square Feet
AVAILABLE

Floor Plan



Aerial



For more information, please contact:

JEROME ABOOD, CCIM
(517) 281 5800
jabood@signatureassociates.com

SIGNATURE ASSOCIATES
1125 Trowbridge Road
East Lansing, MI 48823
www.signatureassociates.com