

253 WEST 35TH STREET

Penn Station Retail



Desirable Retail in Penn Station District

AVAILABLE SPACE

Ground 2,600 SF
Mezzanine 800 SF
Basement 2,700 SF with direct stairwell

ASKING RENT

Upon Request

POSSESSION

Immediate

NOTEWORTHY NEARBY TENANTS:

- 34th Street Partnership (BID)
- Starbucks
- Staples
- Gregory's Coffee
- The Tailor Inn Restaurant

SPACE DESCRIPTION

- Ground ceiling height 19'6"
- Mezzanine ceiling height 9'2"
- New storefront to be installed
- Steps from Madison Square Garden, Penn Station and all subways
- Stable ownership, established 1898
- Over 17' of frontage on West 35th Street
- Revitalized street with many new upscale bars, restaurants and hotels
- Newly whiteboxed space with 2 new bathrooms on the Ground and 1 new bathroom on the Mezzanine
- Air Conditioned throughout

For more information, please contact:

ALAN BONETT

917.326.5533

abonett@adamsre.com

BRAD COHN

917.326.5537

bcohn@adamsre.com

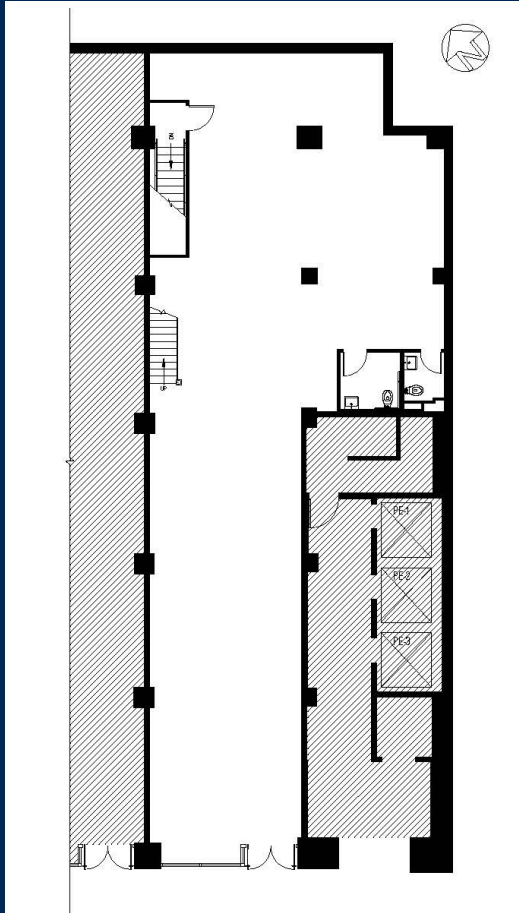


All information furnished is from sources deemed reliable. No warranty or representation is made as to the accuracy thereof and same is submitted subject to errors, omissions of price, rental, or other conditions, prior to sale, lease or financing or withdrawal without notice.

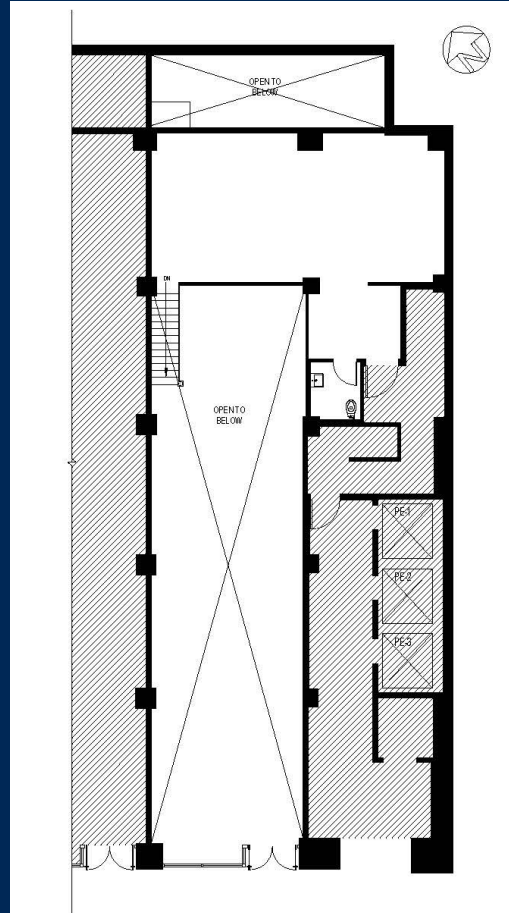
www.adamsre.com

253 WEST 35TH STREET Floorplans

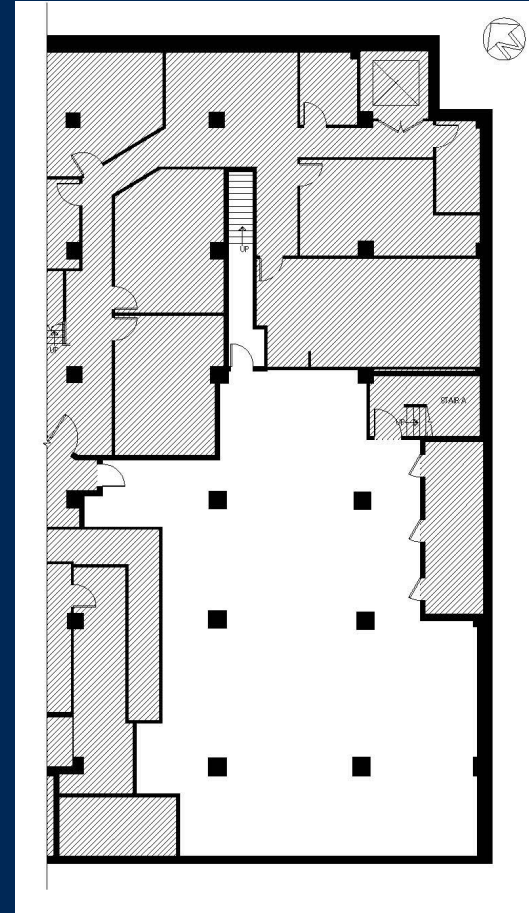
Ground Floor



Mezzanine



Basement



For more information, please contact:

ALAN BONETT

917.326.5533

abonett@adamsre.com

BRAD COHN

917.326.5537

bcohn@adamsre.com



All information furnished is from sources deemed reliable. No warranty or representation is made as to the accuracy thereof and same is submitted subject to errors, omissions of price, rental, or other conditions, prior to sale, lease or financing or withdrawal without notice.