

For Lease

1033 East Airtex Drive, Suite A | Houston, TX

±9,923 SF Industrial Warehouse



Property Features



Total SF: ±9,923 SF (70.0' W x 140.0' L)



Office SF: ±1,345



Clear Height: 26'



Power: 3Phase



Sprinklers: 100%



Dock doors:
Two (2) Dock High Doors



Truck Court: 135'



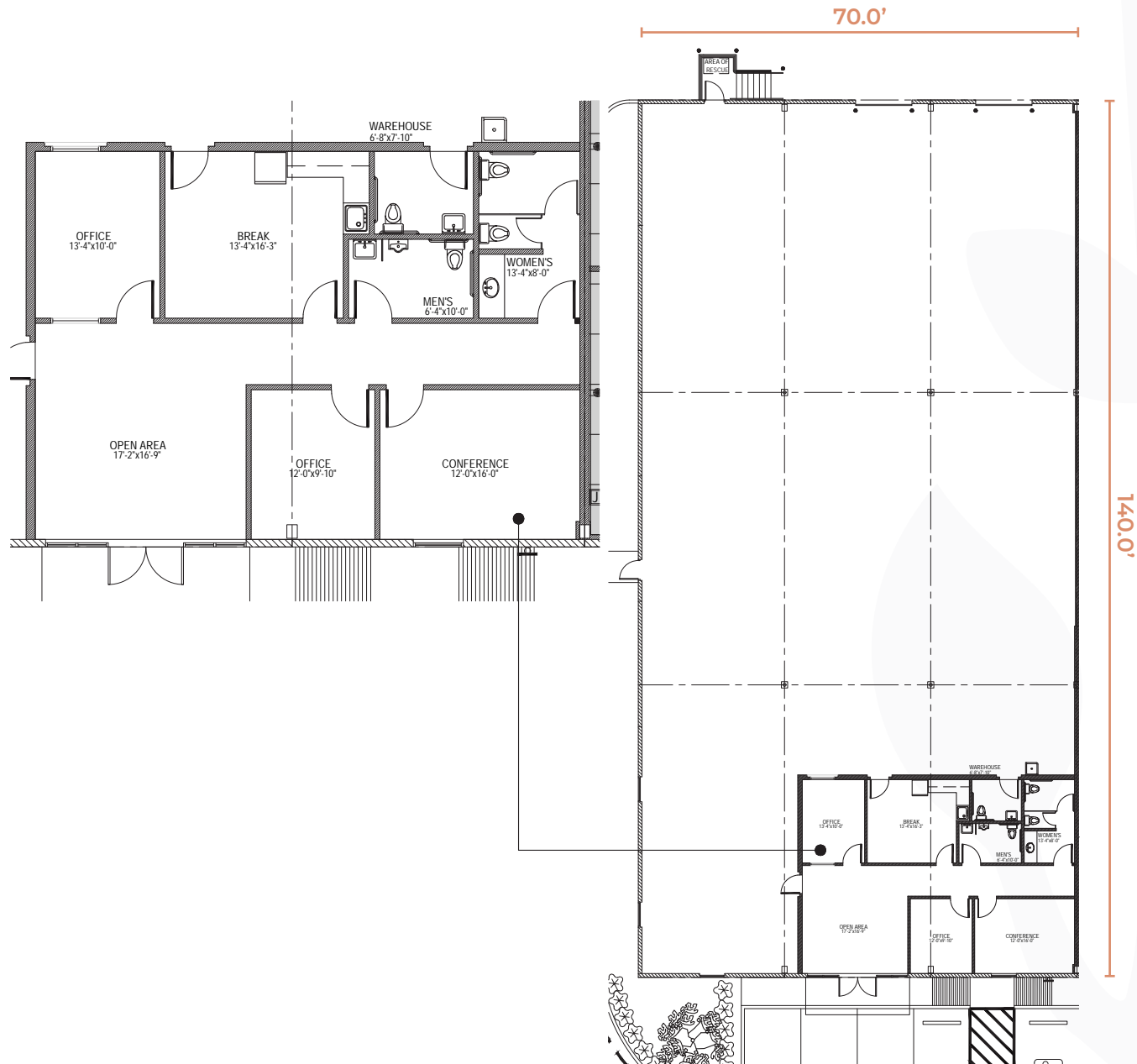
Additional Features:
Gated Truck Court and Outdoor Storage Area
12 Striped Parking Spaces with additional parking available



Please contact brokers for pricing



Floor Plan



Airtex Business Park



Available

E AIRTEX DR

Location

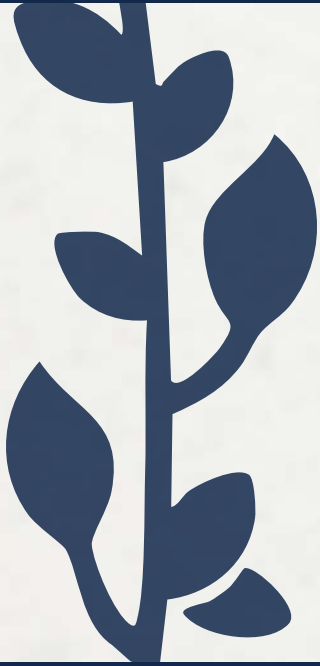
Strategically located in between I-45 and Hardy Toll Road, near Houston's Bush Intercontinental Airport, this property offers exceptional functionality within a secured business park setting.

Airtex Business Park

Key Distances

| | |
|-----------------------|-------------|
| IAH Airport | ±7.5 miles |
| The Woodlands | ±15.2 miles |
| Downtown Houston | ±17.9 miles |
| Hobby Airport | ±28.2 miles |
| Barbours Cut Terminal | ±42.5 miles |
| Bayport Terminal | ±46.6 miles |





1033 East Airtex Drive, Suite A



For more information, please contact:

MARK NICHOLAS, SIOR

Executive Vice President
mark.nicholas@jll.com
+1 713 805 6330

WILL CLAY

Executive Vice President
will.clay@jll.com
+1 713 503 1027

ANGELA WATFORD

Associate
angela.watford@jll.com
+1 713 425 1848

MARTIN GUTIERREZ

Associate
martin.gutierrez@jll.com
+1 713 212 6500

Although information has been obtained from sources deemed reliable, neither Owner nor JLL makes any guarantees, warranties or representations, express or implied, as to the completeness or accuracy as to the information contained herein. Any projections, opinions, assumptions or estimates used are for example only. There may be differences between projected and actual results, and those differences may be material. The Property may be withdrawn without notice. Neither Owner nor JLL accepts any liability for any loss or damage suffered by any party resulting from reliance on this information. If the recipient of this information has signed a confidentiality agreement regarding this matter, this information is subject to the terms of that agreement. ©2025 Jones Lang LaSalle IP, Inc. All rights reserved.