

PROJECT DETAILS

VILLAGE CROSSROADS • FOR LEASE

PROPERTY HIGHLIGHTS

- Multiple high-profile spaces available
 - 18,000 SF Anchor Box
 - 105' Frontage
 - Dedicated Panels on 2 Pylon signs
 - Available Q3 2026
 - 5,160 SF End Cap
 - Great visibility to US-27/441
 - Dedicated monument signage
 - Available July 2026
- Village Crossroads Highlights
 - High performing regional power center with 1.7M annual visits
 - National Co-tenants include Best Buy, HomeSense, Burlington, PetSmart, Chipotle, Longhorn
 - Signalized access points on Rolling Acres Rd.(13,800 ADT) & US Hwy 441 (28,500 ADT)
 - Regional trade area includes The Villages, Fruitland Park, and Leesburg Market.

DEMOGRAPHICS



TOTAL POPULATION

1 MILE

6,273

3 MILE

34,210

5 MILE

83,345

7 MILE

146,655



DAYTIME POPULATION

5,409

19,014

29,974

42,695



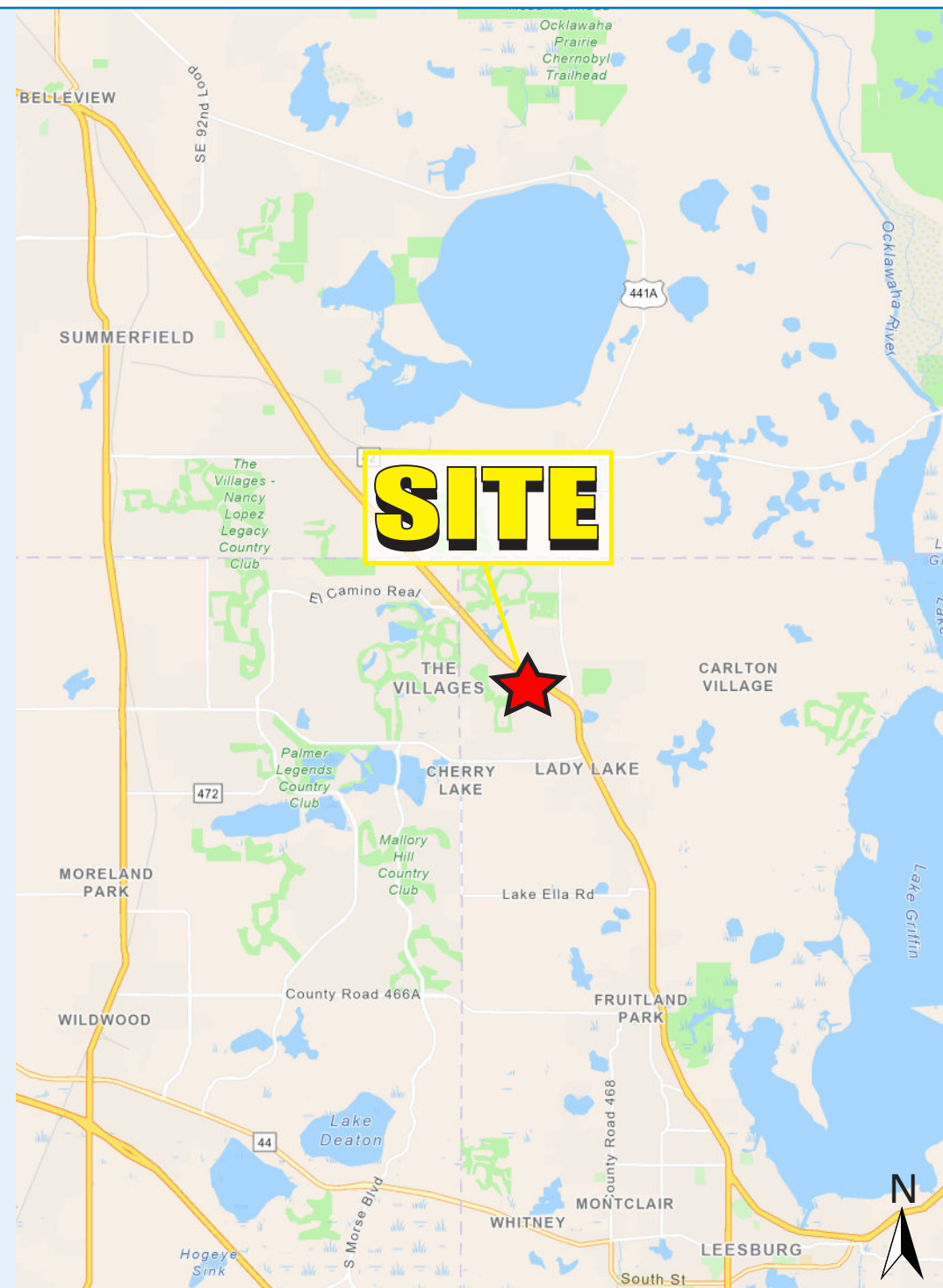
AVERAGE HH INCOME

\$69,601

\$84,159

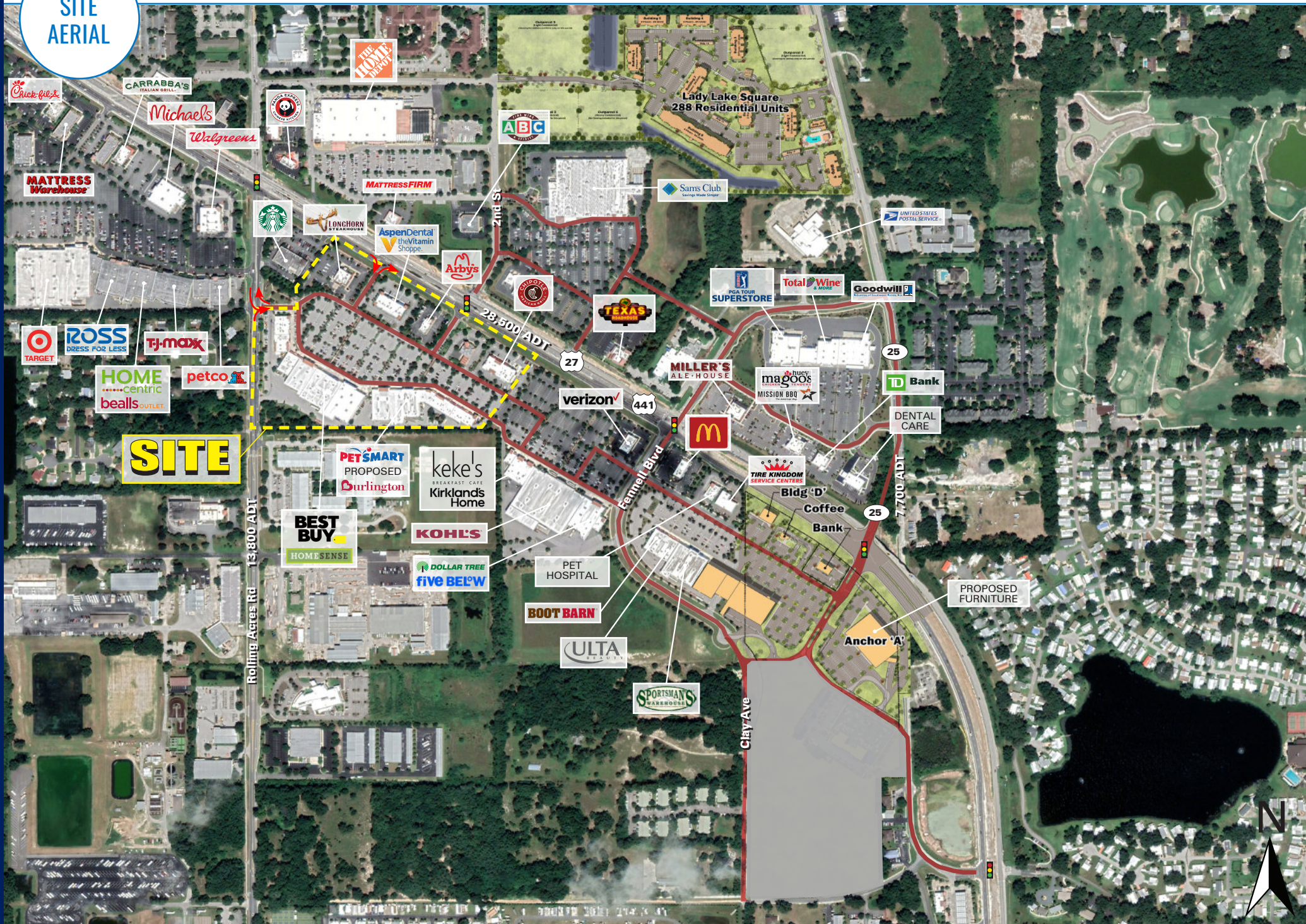
\$88,367

\$94,293



SITE AERIAL

VILLAGE CROSSROADS • FOR LEASE



SITE PLAN

VILLAGE CROSSROADS • FOR LEASE





PYLON

VILLAGE CROSSROADS • FOR LEASE



LADY LAKE, FL

VILLAGE CROSSROADS

FOR LEASE

MATT LYNCH

561.424.3019

MLYNCH@ATLANTICRETAIL.COM

GREG GODINO

561.424.3013

GGODINO@ATLANTICRETAIL.COM



ALBANY
ATLANTA
BOSTON
CHARLOTTE
LOS ANGELES
NEW YORK CITY
ORLANDO
PITTSBURGH
WEST PALM BEACH

HOLTEC BUILDING
1001 N US HWY ONE, SUITE 600
JUPITER, FL 33477
561.427.6699

WWW.ATLANTICRETAIL.COM

[LINKEDIN.COM/COMPANY/ATLANTIC-RETAIL-PROPERTIES](https://www.linkedin.com/company/atlantic-retail-properties)

[INSTAGRAM.COM/ATLANTIC_RETAIL/](https://www.instagram.com/atlantic_retail/)

REALTY
RESOURCES