

Industrial Warehouse Space For Lease

# Mid America Business Park

8001 Mid America Blvd, Oklahoma City 73131

**WIGGIN**  
PROPERTIES, LLC



## MABP Building I

8001 Mid America Blvd.

Type:	Industrial	Roof:	TPO
Square Footage:	64,174 SF (Office 1,300 SF) (Can be demised 38,333 SF / 25,841 SF)	Clear Height:	24 ft. eaves, 32 ft. centers
Lease Rate:	\$6.00-\$8.00/SF NNN	Dock Doors:	2: 1 - 12' x 14' ; 1 - 20' x 20'
Zoning:	I-2		

Call Michael Raff at **405.842.0100**

[mraff@wiggprop.com](mailto:mraff@wiggprop.com) | [wiggprop.com](http://wiggprop.com)

This material is provided for information purposes only. It is from sources believed to be reliable. However, Wiggin Properties makes no warranties or representations, expressed or implied, as to the accuracy or sufficiency of the information. It is presented subject to errors, omissions, changes or withdrawal without notice. Square footage per owner. Maps © 2019 Google.

# Mid America Business Park

8001 Mid America Blvd, Oklahoma City 73131

## Mid America's Neighbors Tinker AFB and Boeing Continues Major Expansions

### Boeing Campus

In 2019, Boeing received a \$14.3 billion contract to modify, modernize and test weapons systems on B-1 and B-52 bombers. Boeing selected its OKC campus to fulfil the contract with an expected completion date of April 11, 2029. In 2015, Boeing selected Oklahoma City as its new headquarters for aircraft modernization. Next Boeing expanded the OKC campus with a new \$80 million building. With employment numbers trending upward since its expansion, this new contract should continue the trend adding more high-paying jobs to the area.

### New KC-46A Pegasus Maintenance Facility

Congress approved \$111 million in construction for Tinker Air Force Base to build a maintenance depot for the new KC-46A Pegasus refueling aircraft. Construction on the first hangar is nearing completion with the facility projected to have 14 hangars to maintain the aircraft fleet by the end of 2019. The facility is projected to create 1,321 new jobs at Tinker Air Force Base. This expansion is also expected to keep Tinker Air Force Base in the "high importance" category, protecting the base from future base closures for a long-time to come.

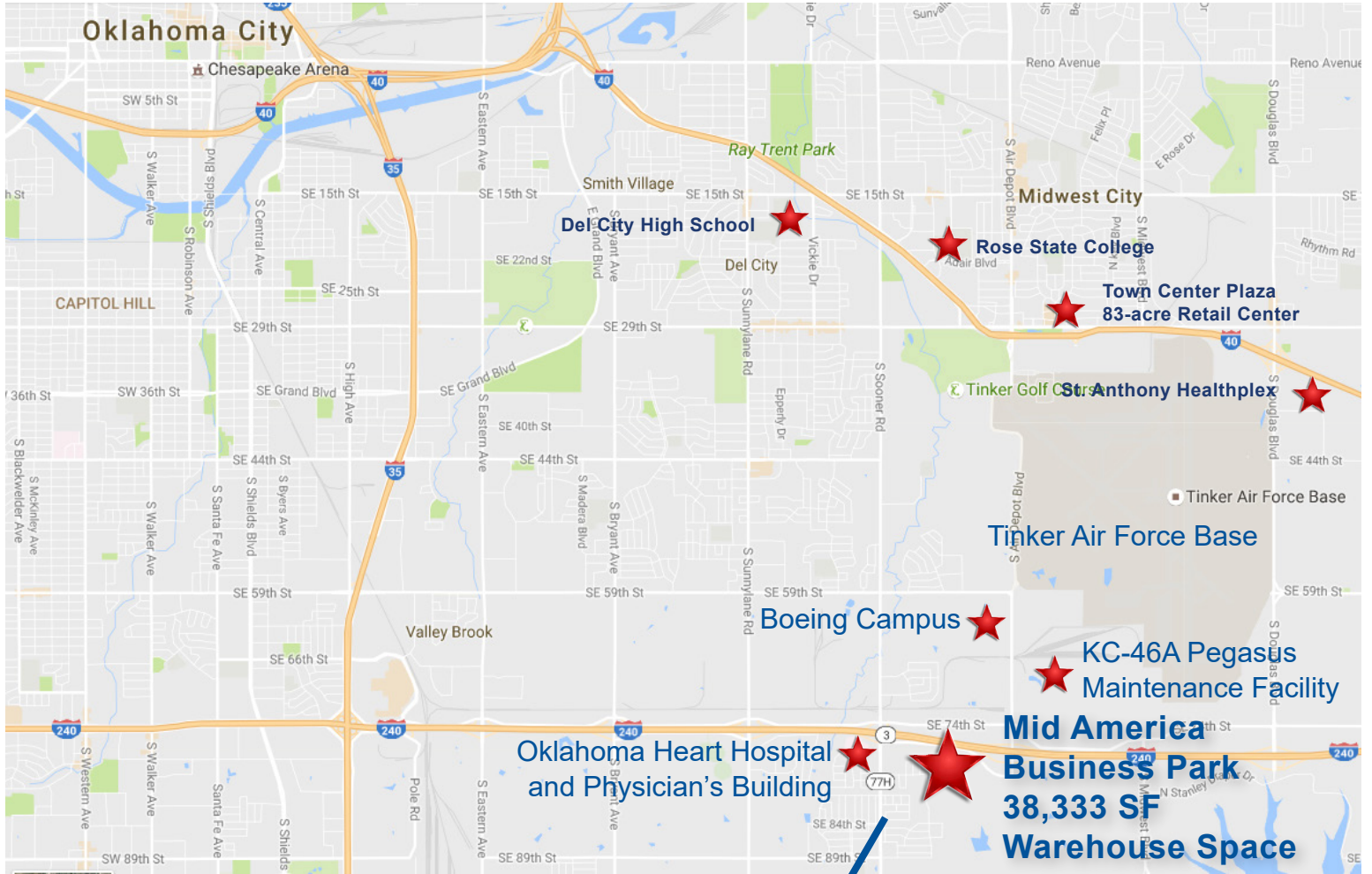


Call Michael Raff at **405.842.0100**

[mraff@wiggprop.com](mailto:mraff@wiggprop.com) | [wiggprop.com](http://wiggprop.com)

# Mid America Business Park

8001 Mid America Blvd, Oklahoma City 73131



Sooner Rd, Alternate route to Tinker AFB from Moore and Norman to the south

## Location, Location, Location

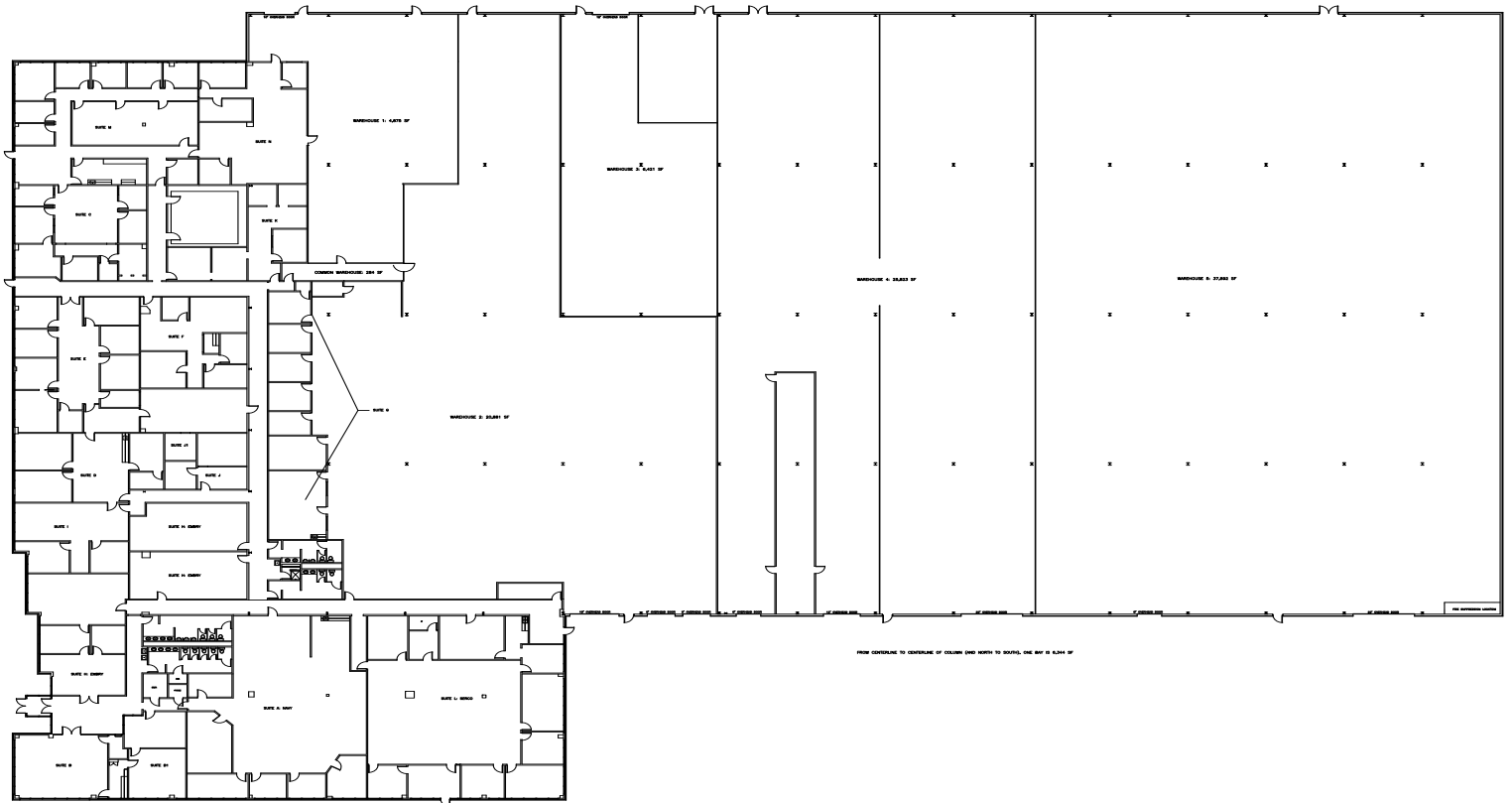
- Oklahoma Heart Hospital and Physician's Building: Less than 1 mile
- KC-46A Pegasus Maintenance Facility: 1.5 miles
- Boeing Campus: 2 miles
- Tinker Air Force Base Gott Gate: 2 miles
- Rose State College: 6 miles
- Moore: 8 miles
- Norman: 13 miles
- Less than 10 miles from Downtown Oklahoma City, Will Rogers Airport and the FAA Center

Call Michael Raff at **405.842.0100**

Industrial Warehouse Space For Lease

# Mid America Business Park

8001 Mid America Blvd, Oklahoma City 73131



Call Michael Raff at **405.842.0100**

[mraff@wiggprop.com](mailto:mraff@wiggprop.com) | [wiggprop.com](http://wiggprop.com)

This material is provided for information purposes only. It is from sources believed to be reliable. However, Wiggin Properties makes no warranties or representations, expressed or implied, as to the accuracy or sufficiency of the information. It is presented subject to errors, omissions, changes or withdrawal without notice. Square footage per owner. Maps © 2019 Google.