

# FOR LEASE OFFICE BUILDING



**27611 LA PAZ ROAD | LAGUNA NIGUEL, CALIFORNIA**

## OFFERING SUMMARY

Lease Rate:	\$2.40 SF/month (Full Service)
Building Size:	53,361 SF
Available SF:	5,020 SF
Lot Size:	2.31 Acres

## PROPERTY OVERVIEW

This premier property offers modern, flexible office space, state-of-the-art facilities, and a professional and convenient environment for your team and clients.

## PROPERTY HIGHLIGHTS

- Unique Atrium Oasis with Water Features and Interior Gardens
- 5,020 SF High Ceiling Creative Space with Hardwood Floors
- On Site Property Management
- Ample Parking
- Easy Access to 73 Toll Road
- Excellent La Paz Road Corridor Surrounded by Major Restaurants and Retailers
- Eyebrow Signage Available

### EXCLUSIVELY LISTED BY:

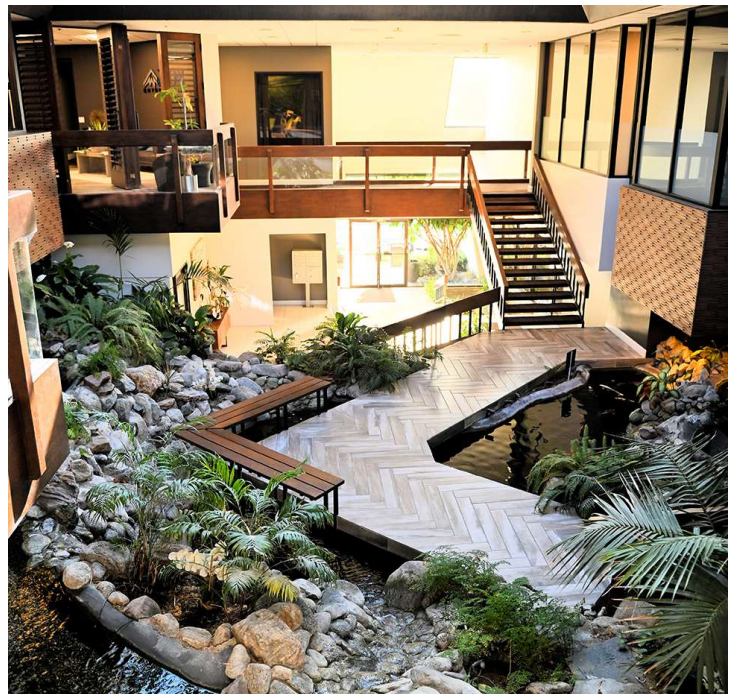
#### John Bosko

Executive Vice President  
949.468.2323 Direct  
johnbosko@naicapital.com  
CA DRE #00969975



[www.naicapital.com](http://www.naicapital.com)





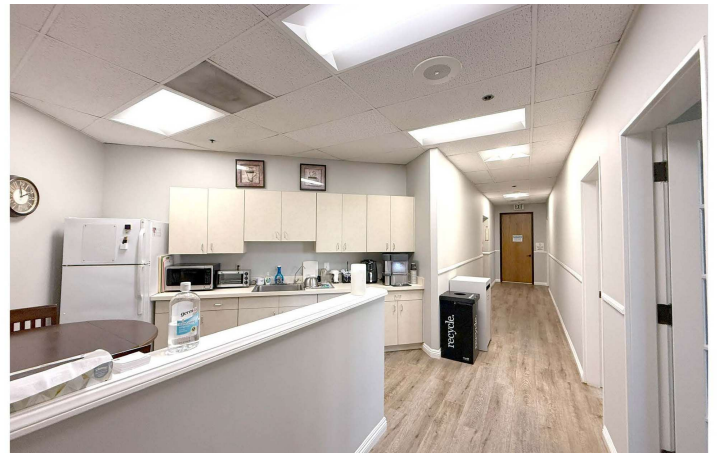
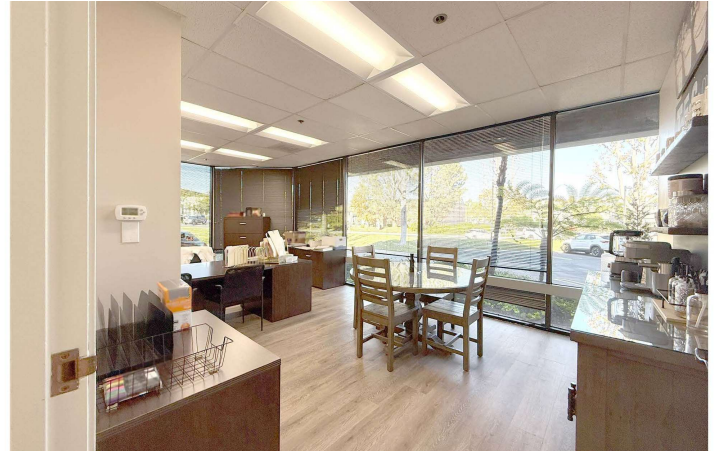
## John Bosko

Executive Vice President  
949.468.2323 Direct  
johnbosko@naicapital.com

CA DRE #00969975

No warranty, express or implied, is made as to the accuracy of the information contained herein. This information is submitted subject to errors, omissions, change of price, rental or other conditions withdrawal without notice, and is subject to any special listing conditions imposed by our principals. Cooperating brokers, buyers, tenants and other parties who receive this document should not rely on it, but should use it as a starting point of analysis, and should independently confirm the accuracy of the information contained herein through a due diligence review of the books, records, files and documents that constitute reliable sources of the information described herein. Logos are for identification purposes only and may be trademarks of their respective companies. NAI Capital Commercial, Inc. CAL DRE Lic. #02130474





## John Bosko

Executive Vice President  
949.468.2323 Direct  
johnbosko@naicapital.com

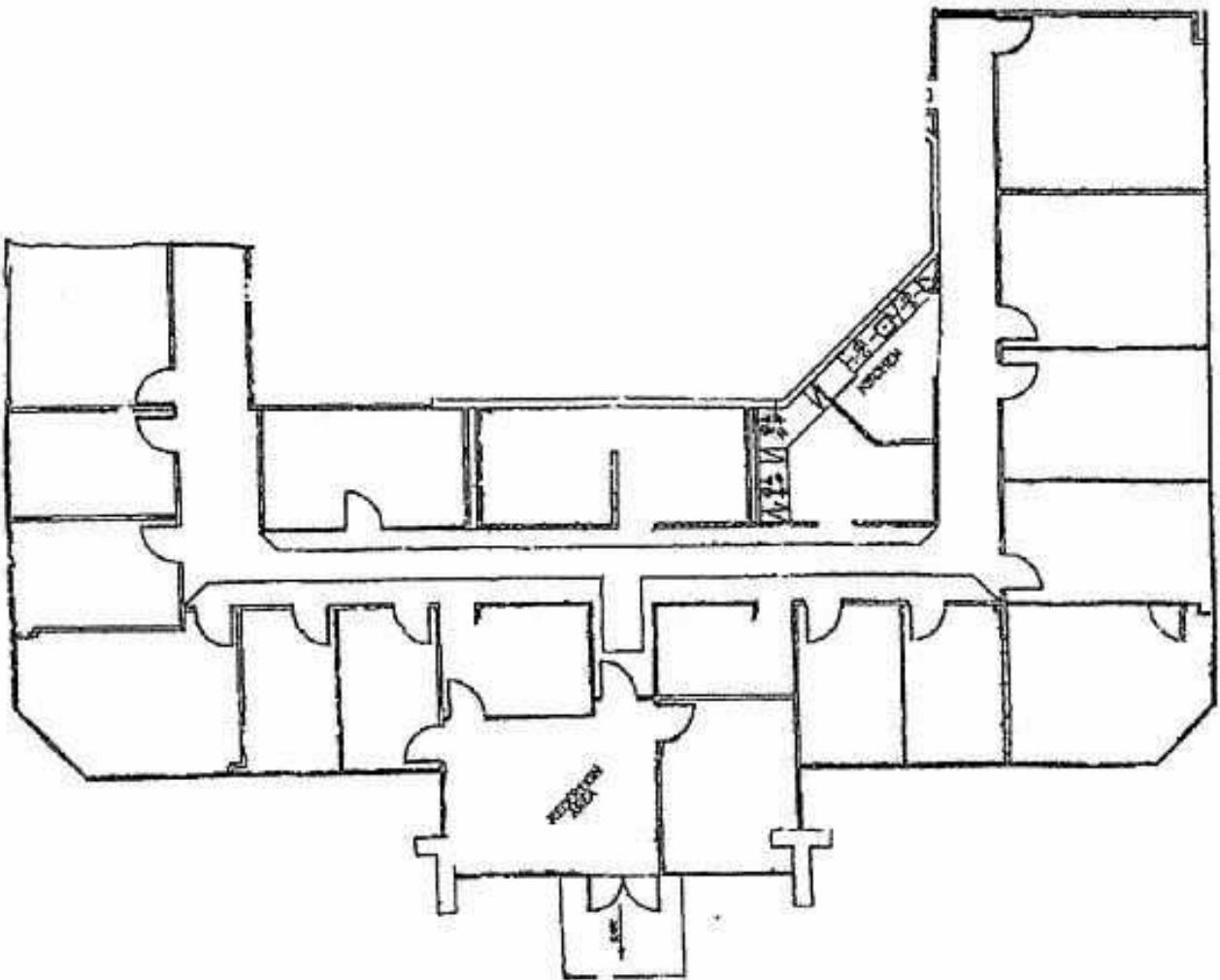
CA DRE #00969975

No warranty, express or implied, is made as to the accuracy of the information contained herein. This information is submitted subject to errors, omissions, change of price, rental or other conditions withdrawal without notice, and is subject to any special listing conditions imposed by our principals. Cooperating brokers, buyers, tenants and other parties who receive this document should not rely on it, but should use it as a starting point of analysis, and should independently confirm the accuracy of the information contained herein through a due diligence review of the books, records, files and documents that constitute reliable sources of the information described herein. Logos are for identification purposes only and may be trademarks of their respective companies. NAI Capital Commercial, Inc. CAL DRE Lic. #02130474

# FLOOR PLAN

27611 La Paz, #D

“Not to scale, plan is a representation”.



**John Bosko**

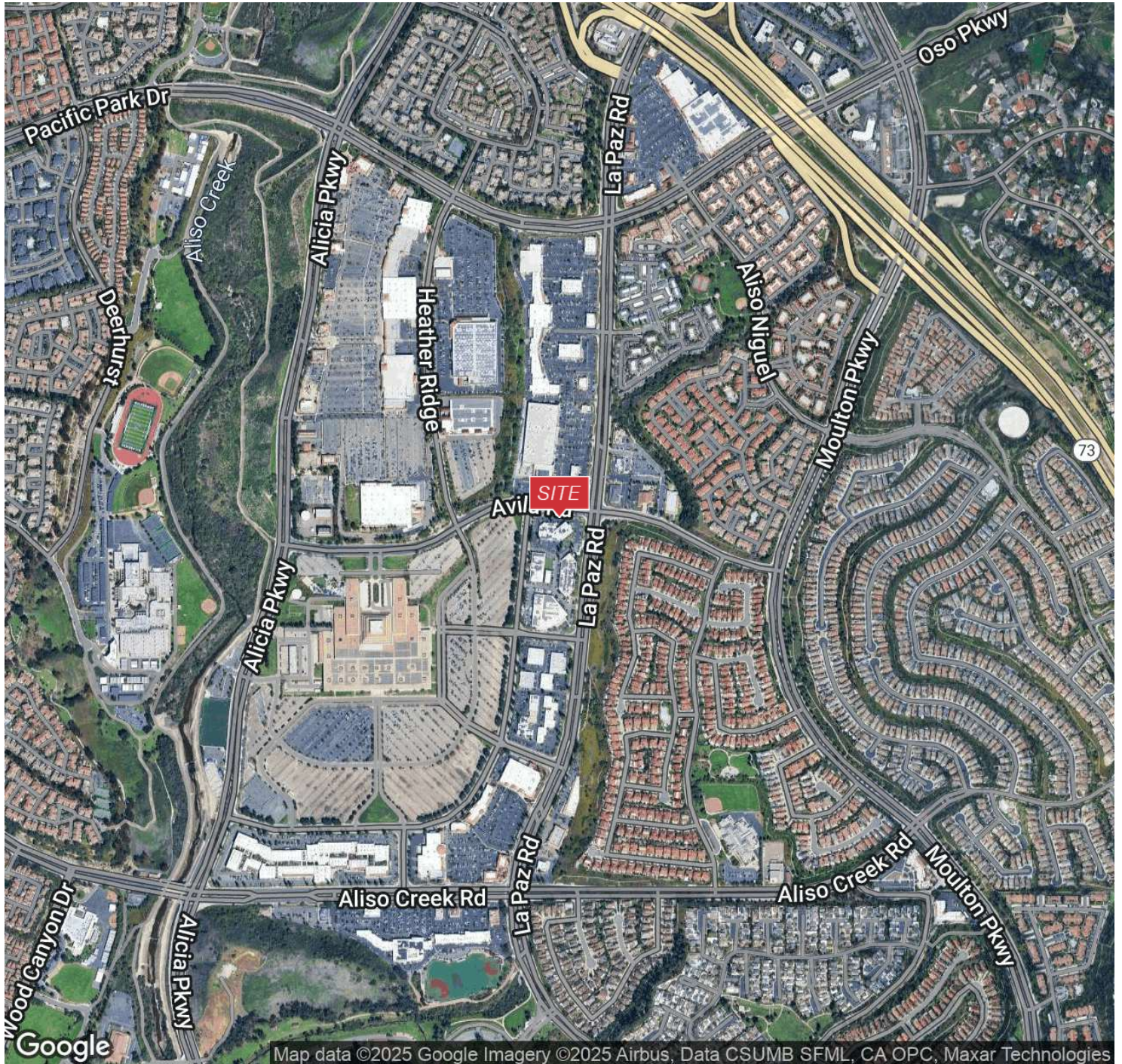
Executive Vice President  
949.468.2323 Direct  
johnbosko@naicapital.com

CA DRE #00969975

No warranty, express or implied, is made as to the accuracy of the information contained herein. This information is submitted subject to errors, omissions, change of price, rental or other conditions without withdrawal without notice, and is subject to any special listing conditions imposed by our principals. Cooperating brokers, buyers, tenants and other parties who receive this document should not rely on it, but should use it as a starting point of analysis, and should independently confirm the accuracy of the information contained herein through a due diligence review of the books, records, files and documents that constitute reliable sources of the information described herein. Logos are for identification purposes only and may be trademarks of their respective companies. NAI Capital Commercial, Inc. CAL DRE Lic. #02130474

NAI Capital | 1920 Main Street #100 | Irvine, CA 92614





## John Bosko

Executive Vice President  
949.468.2323 Direct  
johnbosko@naicapital.com

CA DRE #00969975

No warranty, express or implied, is made as to the accuracy of the information contained herein. This information is submitted subject to errors, omissions, change of price, rental or other conditions withdrawal without notice, and is subject to any special listing conditions imposed by our principals. Cooperating brokers, buyers, tenants and other parties who receive this document should not rely on it, but should use it as a starting point of analysis, and should independently confirm the accuracy of the information contained herein through a due diligence review of the books, records, files and documents that constitute reliable sources of the information described herein. Logos are for identification purposes only and may be trademarks of their respective companies. NAI Capital Commercial, Inc. CAL DRE Lic. #02130474