

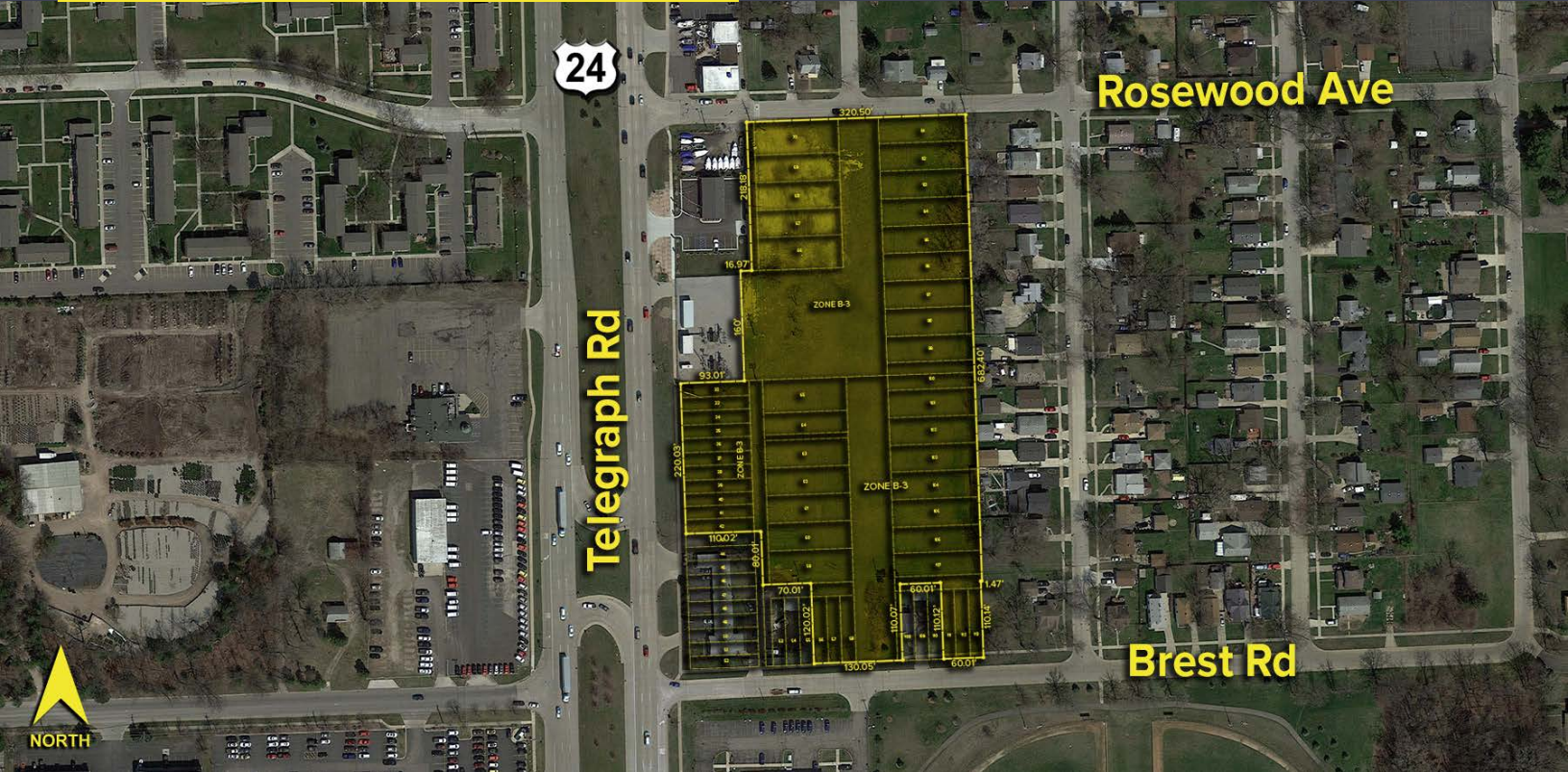
TELEGRAPH ROAD TAYLOR, MICHIGAN

VACANT LAND FOR SALE
6.02 Acres Available



**SIGNATURE
ASSOCIATES**
KNOW SIGNATURE | KNOW RESULTS

DEVELOPMENT LAND



PROPERTY FEATURES

- 6.02 acres available
- Zoned B-3
- Utilities at site
- Great development land located on heavily traveled Telegraph Road
- Owner will build-to-suit
- Join many nearby national retailers
- Sale Price: TBD



For more information, please contact:

JUSTIN GAFFREY

(248) 799 3143

jgaffrey@signatureassociates.com

SIGNATURE ASSOCIATES

One Towne Square, Suite 1200

Southfield, MI 48076

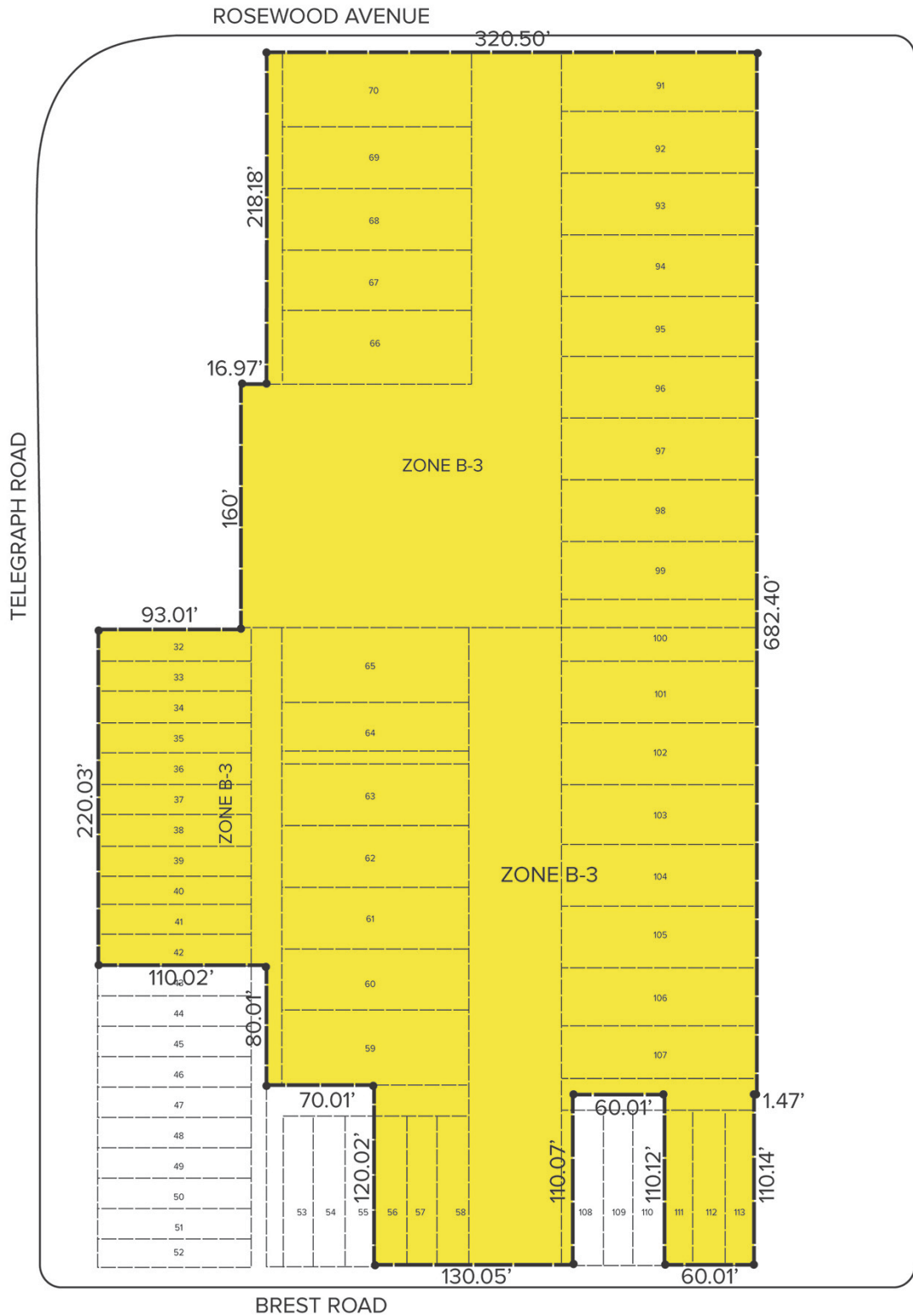
www.signatureassociates.com

Telegraph Road - Taylor, Michigan

Land For Sale

6.02
Acres
AVAILABLE

Site Plan



For more information, please contact:

JUSTIN GAFFREY

(248) 799 3143

jgaffrey@signatureassociates.com

SIGNATURE ASSOCIATES

One Towne Square, Suite 1200

Southfield, MI 48076

www.signatureassociates.com