

# FOR LEASE

## 1006 W ADAMS ST. PHOENIX, AZ 85007



Excellent office location in Downtown Phoenix. Freestanding building on corner lot. Dual street frontage with easy access. Reception area with eight private offices, conference room, kitchenette, breakroom, men's and women's restrooms, storage. Fenced parking lot. Minutes away from downtown amenities. C3 Zoning. Close by freeway. Easy lease terms!



Reception Area



Corridor-1 to Offices



Corridor-2 to Offices



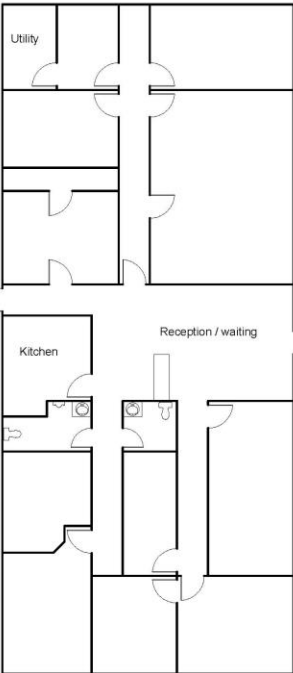
Breakroom



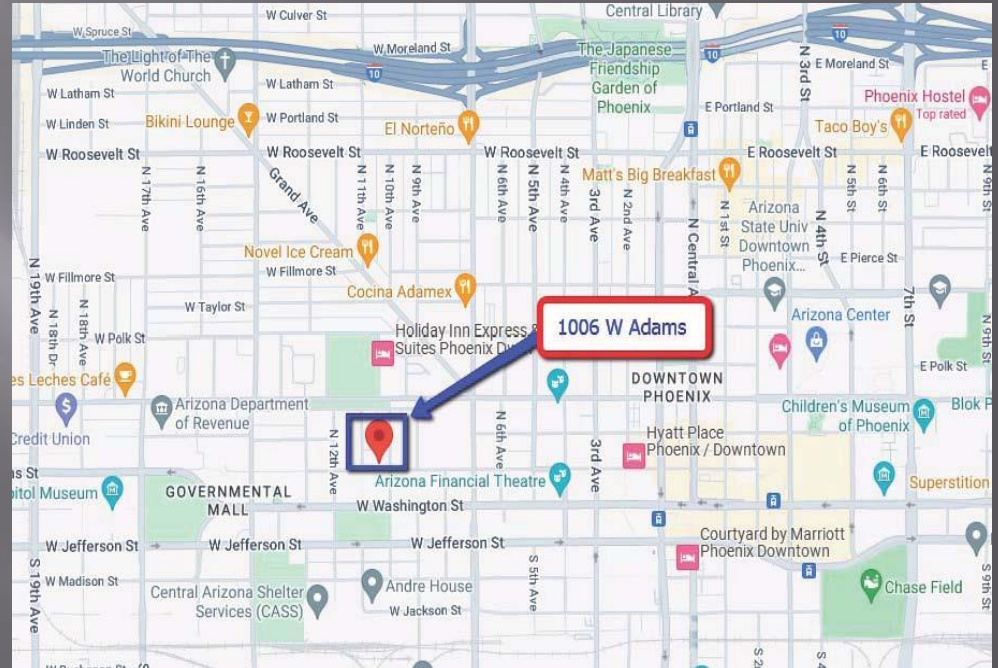
Randy Erwin  
Century21 Commercial  
602-418-1116  
Email: [Randy.Erwin@Century21.com](mailto:Randy.Erwin@Century21.com)

# FOR LEASE

1006 W ADAMS ST. PHOENIX, AZ 85007



NOT TO SCALE



## Central Phoenix Location



# COMMERCIAL.

Randy Erwin

Century21 Commercial

602-418-1116

Email: [Randy.Erwin@Century21.com](mailto:Randy.Erwin@Century21.com)